

Bodenmesswerte

Mühledorf

Wald

Saure Braunerde

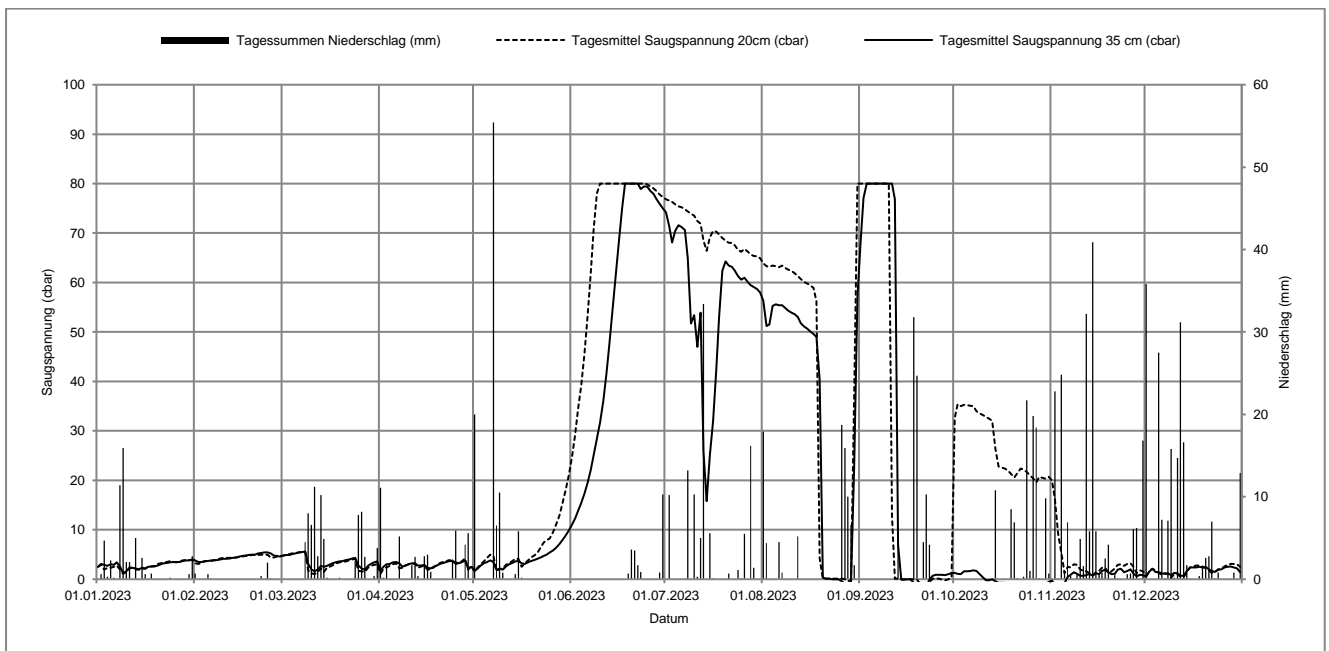
Koordinaten 604033 / 220559, 633 müM

mittelschwerer Boden

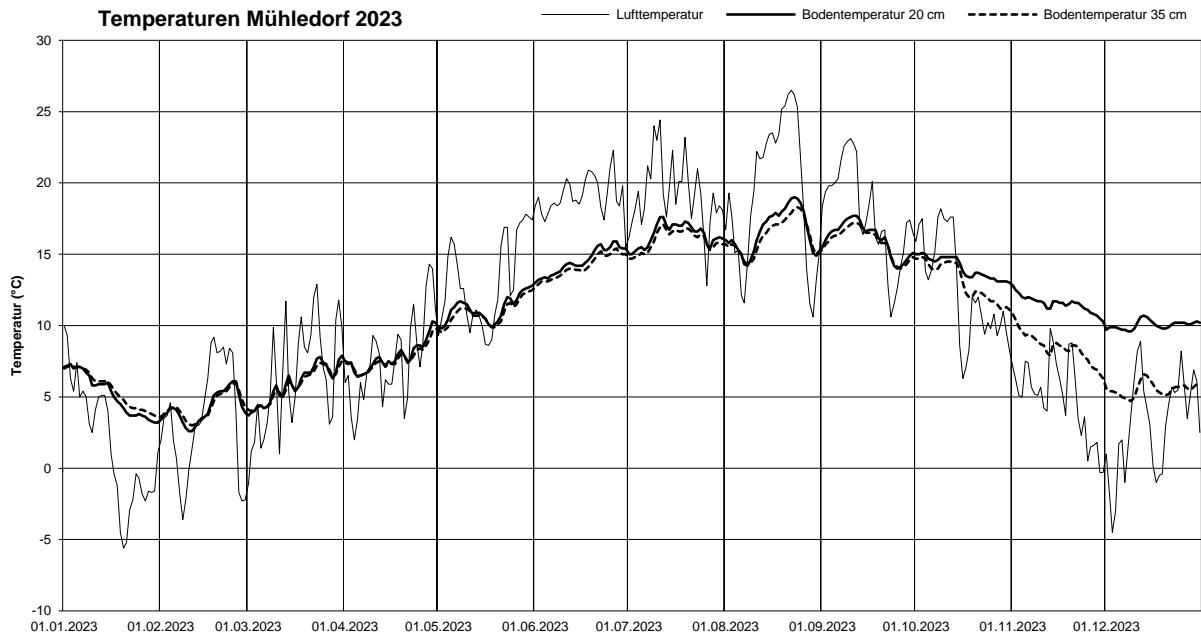
2023 Tag	Jan		Feb		Mär		Apr		Mai		Jun		Jul		Aug		Sep		Okt		Nov		Dez	
	SS35 (cbar)	N (mm)	SS35 (cbar)	N (mm)	SS35 (cbar)	N (mm)	SS35 (cbar)	N (mm)	SS35 (cbar)	N (mm)	SS35 (cbar)	N (mm)	SS35 (cbar)	N (mm)	SS35 (cbar)	N (mm)	SS35 (cbar)	N (mm)	SS35 (cbar)	N (mm)	SS35 (cbar)	N (mm)	SS35 (cbar)	N (mm)
1	2.5	0.0	3.8	0.7	4.8	0.0	1.8	11.1	1.7	20.0	11.0	0.0	74.2	0.0	56.3	17.9	68.3	0.0	1.3	0.0	-0.3	0.0	0.5	35.8
2	3.1	0.6	3.5	0.0	4.9	0.0	2.6	0.2	2.2	0.0	12.3	0.0	71.4	10.2	51.2	4.4	77.1	0.0	1.1	0.0	-1.3	22.8	1.5	0.0
3	2.9	4.7	3.5	0.0	4.9	0.0	3.0	1.7	2.8	0.0	13.8	0.0	68.1	0.0	51.5	0.0	80.0	0.0	1.0	0.0	-1.3	0.1	2.1	0.0
4	2.7	0.3	3.7	0.0	5.1	0.0	3.1	0.0	3.2	0.0	15.4	0.0	70.5	0.0	55.3	0.0	80.0	0.0	1.6	0.0	-1.3	24.8	1.5	0.0
5	3.0	2.3	3.7	0.6	5.2	0.0	3.4	0.0	3.5	0.0	17.3	0.0	71.6	0.0	55.6	0.0	80.0	0.0	1.6	0.0	-0.8	1.0	1.4	27.5
6	2.9	0.2	3.8	0.1	5.4	0.0	3.5	0.0	3.8	0.0	19.5	0.0	71.2	0.0	55.4	4.5	80.0	0.0	1.7	0.0	0.5	6.9	1.2	7.2
7	3.4	0.0	3.8	0.0	5.5	0.0	3.2	5.2	3.5	55.4	22.1	0.0	70.6	0.0	55.4	0.8	80.0	0.0	1.8	0.0	0.9	0.4	1.1	0.1
8	2.6	11.4	3.9	0.0	5.6	4.5	2.5	0.0	1.9	6.5	25.1	0.0	64.9	13.2	54.9	0.0	80.0	0.0	1.7	0.0	1.4	0.0	1.2	7.1
9	1.3	15.9	4.0	0.0	3.1	8.0	2.8	0.0	2.1	10.5	28.4	0.0	51.7	0.0	54.3	0.0	80.0	0.0	1.0	0.0	1.1	0.6	0.8	15.8
10	1.6	2.1	4.1	0.0	2.0	6.6	3.0	0.0	1.9	0.8	31.7	0.0	53.4	10.3	53.9	0.0	80.0	0.0	0.4	0.0	0.7	4.9	1.3	0.2
11	2.4	2.1	4.1	0.0	1.6	11.2	3.2	1.7	2.6	0.0	36.0	0.0	47.0	0.3	53.6	0.0	80.0	0.0	-0.2	0.0	0.7	1.6	1.2	14.7
12	2.3	0.0	4.2	0.0	2.0	2.8	3.2	2.7	3.0	0.0	41.6	0.0	53.9	5.0	53.0	5.2	76.8	0.0	-0.2	0.0	0.8	32.2	0.7	31.2
13	2.2	5.0	4.3	0.0	2.7	10.2	2.8	0.4	3.3	0.0	47.5	0.0	25.9	33.4	51.8	0.0	7.0	4.2	0.0	0.0	1.1	5.8	0.7	16.6
14	2.0	0.0	4.4	0.0	2.5	4.9	2.8	0.0	3.6	0.6	54.5	0.0	15.8	0.0	51.1	0.0	-0.1	0.1	-0.4	10.8	0.7	40.9	1.7	1.7
15	2.3	2.6	4.6	0.0	2.7	0.2	2.9	2.8	3.7	5.8	61.5	0.0	25.1	5.6	50.7	0.0	-0.1	0.0	-0.7	0.0	1.2	5.8	2.4	0.1
16	2.2	0.6	4.7	0.0	3.0	0.0	2.3	3.0	3.2	0.2	68.4	0.0	31.9	0.1	50.1	0.0	0.0	0.0	-0.7	0.0	1.0	0.7	2.4	0.0
17	2.5	0.0	4.8	0.0	3.3	0.0	2.2	0.9	3.1	0.0	75.1	0.0	42.3	0.0	49.6	0.0	0.0	0.0	-0.7	0.0	1.7	0.8	2.4	0.0
18	2.6	0.7	4.9	0.0	3.5	0.0	2.5	0.0	3.4	0.0	80.0	0.0	53.2	0.0	49.0	0.0	-0.7	31.8	-1.3	0.0	1.9	2.5	2.5	0.4
19	2.6	0.0	5.0	0.0	3.6	0.2	2.8	0.0	3.7	0.0	80.0	0.7	62.4	0.0	40.3	0.0	-1.0	24.7	-1.9	8.5	1.4	4.2	2.4	1.6
20	2.8	0.0	5.0	0.0	3.7	0.0	3.1	0.0	3.9	0.0	80.0	3.6	64.3	0.0	0.3	0.0	-1.0	0.0	-3.1	6.9	1.0	0.0	2.5	2.6
21	3.0	0.0	5.2	0.0	3.9	0.0	3.3	0.0	4.1	0.0	80.0	3.5	63.4	0.7	0.1	0.0	-1.5	4.5	-1.9	0.1	1.1	0.5	2.0	2.8
22	3.2	0.0	5.3	0.4	4.0	0.0	3.5	0.0	4.4	0.0	80.0	1.7	63.2	0.0	0.1	0.0	-1.5	10.3	-0.9	0.0	1.9	0.1	1.7	7.0
23	3.3	0.0	5.4	0.0	4.2	0.0	3.7	0.0	4.7	0.0	78.9	0.9	62.4	0.0	0.0	0.0	-0.1	4.2	-0.8	0.3	2.1	0.0	1.5	0.1
24	3.4	0.2	5.4	2.0	4.3	2.2	3.7	2.4	5.0	0.0	79.4	0.0	61.3	1.1	0.0	0.0	0.7	0.0	-1.0	21.7	1.4	0.0	1.9	0.8
25	3.5	0.0	5.2	0.1	2.8	7.8	3.4	5.9	5.4	0.0	79.4	0.0	60.6	0.1	0.0	0.0	0.9	0.0	-1.4	1.0	1.7	0.6	2.0	0.0
26	3.5	0.0	4.8	0.0	2.2	8.2	3.2	0.0	5.8	0.0	78.5	0.0	61.0	5.5	-0.4	18.7	0.9	0.0	-1.4	19.8	2.0	0.7	2.4	0.0
27	3.5	0.0	4.7	0.0	1.9	2.7	3.5	0.0	6.4	0.0	77.9	0.0	60.1	0.0	-0.9	15.9	0.9	0.0	-1.5	18.4	1.2	6.1	2.5	0.0
28	3.7	0.0	4.6	0.0	2.7	0.0	3.8	4.2	7.1	0.0	76.9	0.0	59.5	16.2	-0.9	10.0	0.8	0.0	-1.0	0.1	0.6	6.2	2.6	0.0
29	3.8	0.0			3.1	0.0	2.1	5.6	7.9	0.0	75.9	0.8	59.1	1.4	-0.5	6.6	1.0	0.0	-0.9	0.0	0.9	0.0	2.4	0.8
30	3.8	0.6			3.4	0.4	2.5	0.0	8.8	0.0	75.0	10.3	58.7	0.0	23.2	1.7	1.2	0.0	-0.9	9.8	0.8	16.8	2.2	0.0
31	4.0	2.8			3.6	3.8			9.8	0.0			58.0	0.0	57.0	0.0			-0.5	0.7			1.4	12.9

SS35 = Tagesmittelwerte Saugspannung (cbar) in 35 cm Tiefe; N = Tagessummen Niederschlag (mm);

		Jan	Feb	März	April	Mai	Juni	Juli	Aug	Sept	Okt	Nov	Dez
Niederschlag (mm)	Monatssumme	52.1	3.9	75.2	46.4	99.7	21.5	103.1	85.7	79.8	98.1	187.0	187.0
Saugspannung 20 cm (cbar)	Monatsmittel	2.7	4.3	3.2	2.8	6.2	70.4	70.3	39.8	26.8	26.8	3.5	1.8
	Maximum	4.1	5.2	5.6	4.5	23.4	80.0	77.2	80.0	80.0	35.9	20.9	3.2
	Minimum	0.3	2.7	0.3	0.4	0.4	22.3	64.2	-0.5	-2.7	0.4	0.4	-0.1
Saugspannung 35 cm (cbar)	Monatsmittel	2.9	4.4	3.6	3.0	4.2	53.5	56.6	34.6	31.6	-0.3	0.8	1.7
	Maximum	4.0	5.5	5.7	3.9	10.6	80.0	74.7	63.9	80.0	2.0	2.3	2.7
	Minimum	0.2	3.4	1.0	1.1	0.4	10.3	10.6	-1.1	-1.9	-3.4	-1.5	0.3
Bodentemperatur 20 cm (°C)	Monatsmittel	5.2	4.2	5.9	7.8	11.2	14.5	16.3	16.7	16.1	14.0	11.5	10.0
	Maximum	7.3	6.3	8.0	10.6	13.0	16.3	18.1	19.2	17.9	15.1	12.9	10.8
	Minimum	3.1	2.6	3.7	6.0	9.5	12.7	14.9	13.9	13.8	12.9	10.0	9.6
Bodentemperatur 35 cm (°C)	Monatsmittel	5.5	4.3	5.8	7.6	10.9	14.1	16.0	16.3	15.8	13.1	8.5	5.5
	Maximum	7.2	6.0	7.6	9.9	12.7	15.6	17.3	18.4	17.2	14.9	11.0	6.7
	Minimum	3.6	3.0	4.0	6.3	9.4	12.6	14.6	14.2	13.9	11.0	6.0	4.7
Lufttemperatur (°C)	Monatsmittel	1.7	3.4	6.4	7.6	13.1	19.1	19.3	19.3	17.8	12.6	4.9	3.1
	Maximum	12.9	13.7	18.6	18.8	23.7	28.4	31.2	33.7	28.8	23.6	12.1	11.2
	Minimum	-8.6	-5.7	-1.9	-2.3	5.6	12.5	10.8	9.0	8.1	3.3	-2.0	-5.6



Temperaturen Mühledorf 2023



Darstellung der Tagesmittelwerte; Lücken = keine Daten

Bodenmesswerte

Mühledorf

Wald

Saure Braunerde

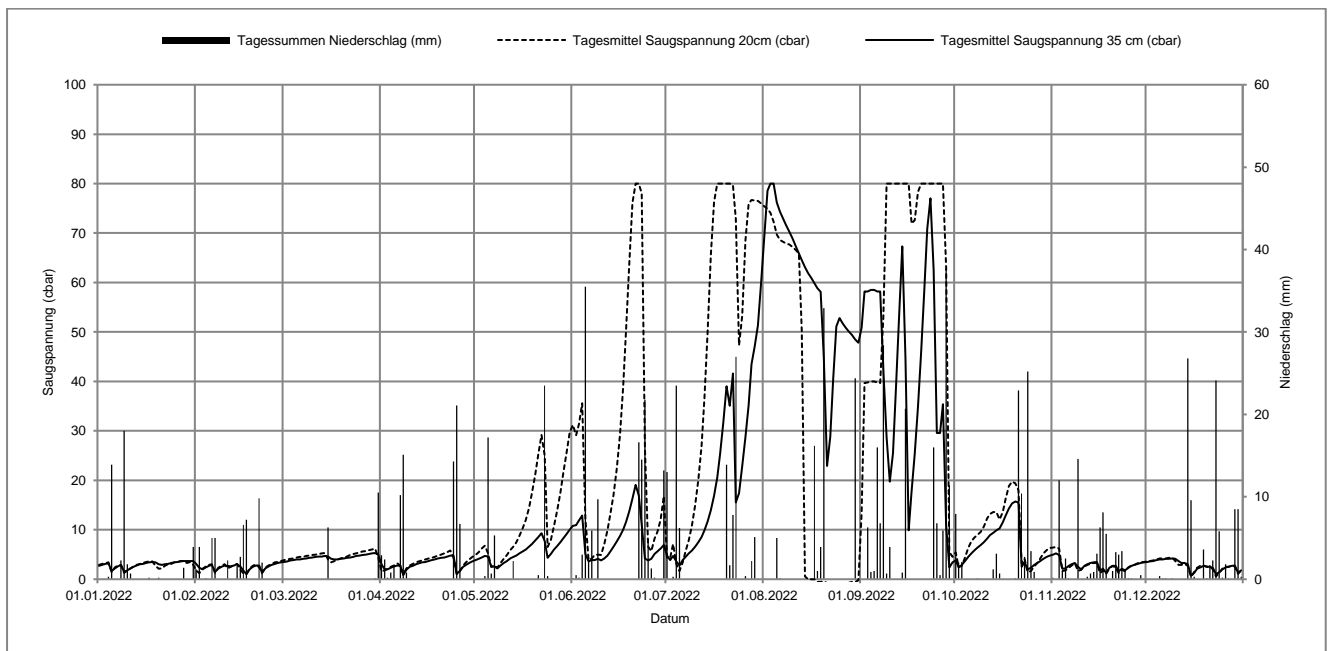
Koordinaten 604033 / 220559, 633 müM

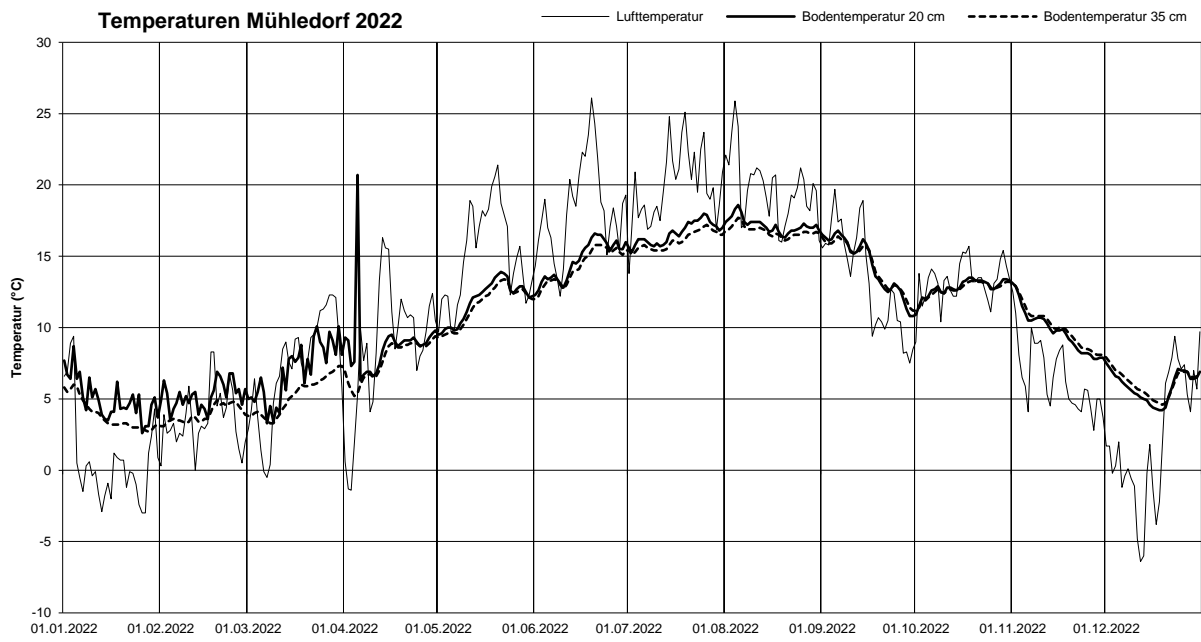
mittelschwerer Boden

2022 Tag	Jan		Feb		Mär		Apr		Mai		Jun		Jul		Aug		Sep		Okt		Nov		Dez	
	SS35 (cbar)	N (mm)	SS35 (cbar)	N (mm)	SS35 (cbar)	N (mm)	SS35 (cbar)	N (mm)	SS35 (cbar)	N (mm)	SS35 (cbar)	N (mm)	SS35 (cbar)	N (mm)	SS35 (cbar)	N (mm)	SS35 (cbar)	N (mm)	SS35 (cbar)	N (mm)	SS35 (cbar)	N (mm)	SS35 (cbar)	N (mm)
1	2.7	0.0	3.1	1.2	3.5	0.0	3.0	2.9	3.9	0.0	10.8	0.1	4.8	13.0	69.3	0.0	50.9	0.0	3.8	7.9	5.0	0.2	3.5	0.0
2	2.9	0.0	2.3	3.9	3.6	0.0	2.0	2.4	4.1	0.0	10.9	0.5	3.9	0.0	78.6	0.0	58.2	0.0	2.4	2.0	5.2	0.0	3.6	0.0
3	3.1	0.0	2.0	0.0	3.8	0.0	2.0	0.2	4.4	0.0	11.9	0.2	4.7	0.3	80.0	0.0	58.2	6.3	2.9	2.1	4.9	12.0	3.7	0.0
4	3.2	0.3	2.4	0.1	3.9	0.0	2.3	0.8	4.7	0.4	12.9	3.0	3.6	23.5	80.0	0.0	58.5	0.9	3.7	0.0	2.1	1.0	3.9	0.0
5	1.7	13.9	2.7	0.0	4.0	0.0	2.6	1.6	4.6	17.2	5.1	35.5	2.8	6.2	76.2	5.0	58.5	1.0	4.5	0.0	2.2	2.5	4.0	0.4
6	2.2	0.0	2.9	5.0	4.0	0.0	2.8	0.0	2.5	0.7	3.6	2.5	3.9	0.0	74.3	0.1	58.2	16.0	5.2	0.0	2.7	0.1	4.0	0.1
7	2.6	0.0	1.5	5.0	4.1	0.0	2.7	10.2	2.6	5.3	3.9	5.9	4.6	0.0	72.9	0.0	58.2	6.8	5.8	0.0	3.0	0.0	4.1	0.1
8	2.9	2.3	2.1	0.0	4.2	0.0	0.8	15.1	2.2	0.0	3.9	0.0	5.2	0.0	71.6	0.0	42.2	28.4	6.4	0.1	3.3	0.0	4.1	0.0
9	1.5	18.0	2.5	0.0	4.3	0.0	1.9	0.8	2.8	0.0	4.1	9.7	5.8	0.0	70.3	0.0	28.7	0.7	6.9	0.0	2.5	14.6	4.2	0.1
10	1.8	1.8	2.8	0.0	4.4	0.0	2.5	0.1	3.3	0.0	3.8	0.0	6.6	0.0	68.9	0.0	19.7	3.9	7.5	0.0	2.0	0.0	4.1	0.0
11	2.2	0.7	2.7	2.3	4.5	0.0	2.7	0.0	3.7	0.0	4.2	0.0	7.5	0.0	67.4	0.0	25.5	0.0	8.2	0.0	2.7	0.0	3.7	0.0
12	2.5	0.0	2.6	0.0	4.6	0.0	3.0	0.0	4.2	0.0	4.8	0.0	8.5	0.0	65.9	0.0	38.3	0.0	8.9	0.0	3.0	0.3	3.3	0.0
13	2.8	0.0	2.8	0.0	4.6	0.0	3.2	0.0	4.5	2.2	5.6	0.0	9.9	0.0	64.5	0.0	53.1	0.0	9.4	1.2	3.3	0.7	3.3	0.0
14	3.0	0.0	3.0	1.6	4.7	0.0	3.4	0.0	4.8	0.0	6.6	0.0	11.7	0.0	63.1	0.0	67.3	0.8	9.9	3.1	3.4	0.9	3.0	26.8
15	3.1	0.0	2.6	2.7	4.6	6.3	3.5	0.0	5.2	0.0	7.6	0.0	14.0	0.0	61.9	0.0	44.6	20.7	10.3	0.7	3.5	3.1	0.7	9.6
16	3.3	0.0	1.8	6.6	4.1	0.0	3.7	0.0	5.6	0.0	8.7	0.0	16.9	0.0	60.9	0.0	9.9	0.0	11.5	0.0	1.8	6.3	1.3	0.3
17	3.4	0.2	1.0	7.2	4.0	0.0	3.9	0.0	6.0	0.0	10.0	0.0	20.6	0.0	59.8	16.2	17.7	0.0	12.9	0.0	2.1	8.1	2.1	0.0
18	3.5	0.0	2.0	0.0	4.0	0.0	4.0	0.0	6.6	0.0	11.6	0.0	25.4	0.0	58.8	1.0	25.4	0.0	14.3	0.0	1.3	5.5	2.4	0.0
19	3.4	0.0	2.5	0.0	4.1	0.0	4.2	0.0	7.1	0.0	13.7	0.0	31.8	0.0	58.1	3.9	34.8	0.0	15.3	0.0	2.3	0.0	2.7	3.6
20	3.0	0.2	2.8	0.0	4.2	0.0	4.3	0.0	7.8	0.0	16.3	0.0	39.0	13.9	44.6	32.9	46.0	0.0	15.7	0.1	2.7	1.0	2.6	0.1
21	2.9	0.0	2.8	9.8	4.3	0.0	4.4	0.0	8.5	0.5	19.1	0.0	35.1	1.7	22.9	0.0	58.7	0.0	15.5	22.9	2.7	3.3	2.5	1.7
22	3.0	0.0	1.3	2.0	4.4	0.0	4.6	0.0	9.3	0.0	16.9	16.6	41.6	7.8	28.8	0.0	70.9	0.0	2.5	10.4	1.6	3.0	2.3	2.3
23	3.1	0.0	2.2	0.0	4.5	0.0	4.8	0.0	7.7	23.5	11.0	14.5	15.5	27.0	40.3	0.0	77.0	0.0	3.5	2.7	2.1	3.4	1.0	24.1
24	3.3	0.0	2.6	0.0	4.7	0.0	4.8	14.3	4.3	0.4	4.2	21.8	17.4	0.0	51.1	0.0	62.5	16.0	2.0	25.2	1.8	1.1	1.4	5.8
25	3.4	0.0	2.9	0.0	4.8	0.0	1.1	21.1	5.1	0.0	3.8	4.9	22.9	0.0	52.8	0.0	29.6	6.8	2.3	3.4	2.3	0.1	2.0	0.2
26	3.5	0.0	3.1	0.0	4.9	0.0	1.7	6.7	6.0	0.0	4.1	1.3	28.7	0.4	51.7	0.0	29.6	0.5	2.9	0.9	2.7	0.1	2.4	1.8
27	3.6	0.0	3.3	0.0	5.0	0.0	2.5	0.0	6.7	0.0	5.1	0.2	35.2	0.0	50.8	0.0	35.4	5.9	3.3	0.0	2.9	0.0	2.5	0.1
28	3.7	1.4	3.4	0.0	5.1	0.0	2.9	0.0	7.5	0.0	5.6	0.0	43.5	2.2	50.1	0.0	10.9	37.7	3.7	0.0	3.1	0.0	2.7	0.0
29	3.7	0.0			5.2	0.0	3.3	0.0	8.3	0.0	6.2	0.0	47.1	5.1	49.4	0.0	2.4	11.4	4.1	0.0	3.3	0.5	2.8	8.5
30	3.7	0.0			5.3	0.1	3.6	0.0	9.1	0.0	6.9	13.2	51.3	0.0	48.5	24.4	3.4	0.0	4.5	0.0	3.4	0.0	1.3	8.5
31	3.7	3.9			5.0	10.5			10.0	0.0			60.0	0.0	47.8	0.0			4.8	0.0			1.8	0.3

SS35 = Tagesmittelwerte Saugspannung (cbar) in 35 cm Tiefe; N = Tagessummen Niederschlag (mm);

		Jan	Feb	März	April	Mai	Juni	Juli	Aug	Sept	Okt	Nov	Dez
Niederschlag (mm)	Monatssumme	42.7	47.4	16.9	76.2	50.2	130.0	101.0	83.5	163.8	82.7	67.8	94.4
Saugspannung 20 cm (cbar)	Monatsmittel	2.9	2.4	4.7	3.4	11.8	27.1	46.6	28.3	62.7	8.9	2.8	2.8
	Maximum	4.2	3.8	6.5	6.0	34.0	80.0	80.0	75.6	80.0	20.5	6.7	4.5
	Minimum	0.4	0.2	1.0	0.3	1.1	2.7	0.1	-1.3	-0.3	0.7	0.3	0.2
Saugspannung 35 cm (cbar)	Monatsmittel	3.0	2.5	4.4	3.1	5.6	8.1	20.4	59.4	41.1	6.9	2.8	2.8
	Maximum	3.8	3.5	5.4	4.9	10.4	21.7	65.5	80.0	79.9	16.2	5.4	4.2
	Minimum	0.7	0.5	3.5	0.3	1.9	2.0	2.1	20.6	1.5	0.7	0.3	0.1
Bodentemperatur 20 cm (°C)	Monatsmittel	5.0	5.2	6.9	8.8	11.9	14.7	16.6	17.2	14.4	12.8	9.7	5.9
	Maximum	36.5	35.8	37.2	67.1	14.1	16.9	18.4	18.9	17.1	13.7	13.3	7.8
	Minimum	2.4	2.8	2.9	4.8	9.2	12.1	15.0	15.9	10.5	10.8	7.7	4.2
Bodentemperatur 35 cm (°C)	Monatsmittel	3.9	3.9	5.2	7.8	11.5	14.3	16.1	16.8	14.4	12.7	10.0	6.1
	Maximum	6.2	4.9	7.3	9.4	13.5	15.9	17.3	17.9	17.0	13.4	13.2	8.1
	Minimum	2.7	3.0	3.2	4.4	9.2	12.0	14.9	15.9	11.1	11.1	8.0	4.6
Lufttemperatur (°C)	Monatsmittel	0.7	3.5	7.2	8.7	15.1	18.3	19.9	19.8	13.4	13.2	6.5	2.1
	Maximum	12.4	13.0	19.1	21.8	27.9	31.8	32.5	33.6	24.2	18.9	14.2	11.4
	Minimum	-4.9	-3.2	-4.7	-3.1	5.3	8.4	11.8	14.2	6.2	7.4	0.7	-7.8





Darstellung der Tagesmittelwerte; Lücken = keine Daten

Bodenmesswerte

Mühledorf

Wald

Saure Braunerde

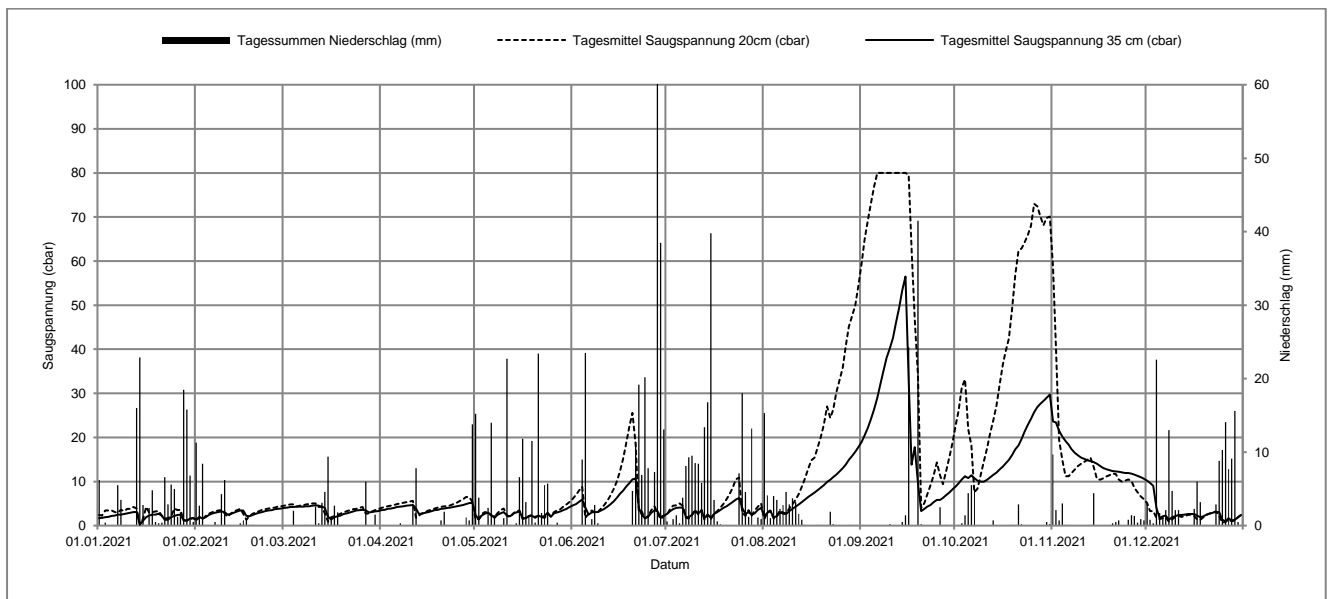
Koordinaten 604033 / 220559, 633 müM

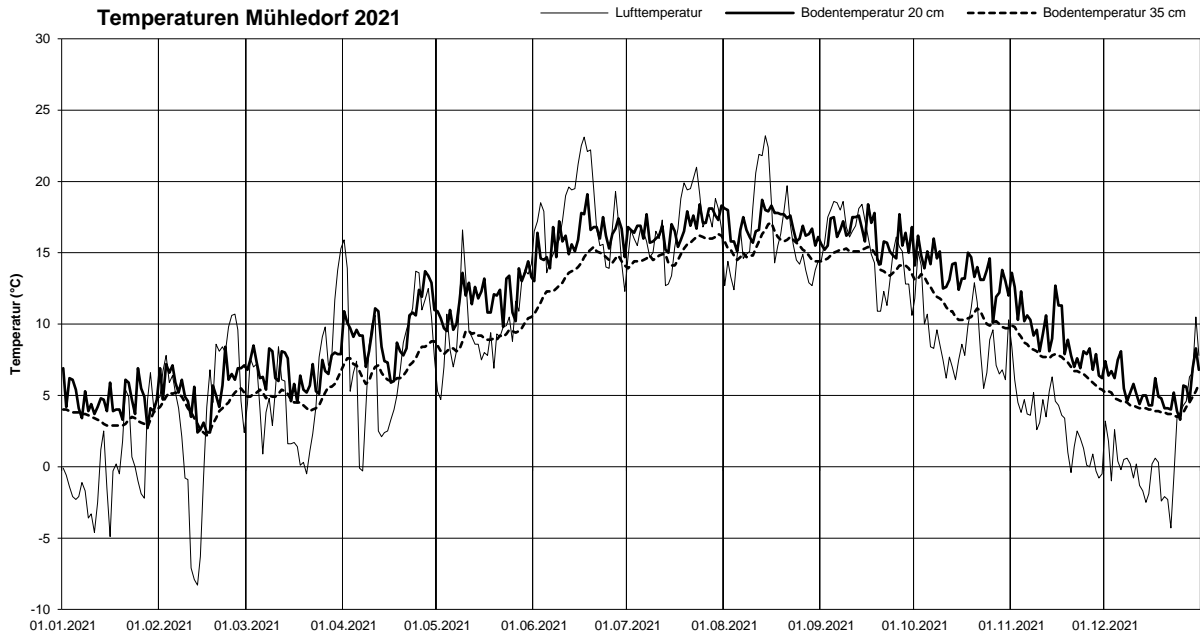
mittelschwerer Boden

2021 Tag	Jan		Feb		Mär		Apr		Mai		Jun		Jul		Aug		Sep		Okt		Nov		Dez	
	SS35 (cbar)	N (mm)	SS35 (cbar)	N (mm)	SS35 (cbar)	N (mm)	SS35 (cbar)	N (mm)	SS35 (cbar)	N (mm)	SS35 (cbar)	N (mm)	SS35 (cbar)	N (mm)	SS35 (cbar)	N (mm)	SS35 (cbar)	N (mm)	SS35 (cbar)	N (mm)	SS35 (cbar)	N (mm)	SS35 (cbar)	N (mm)
1	1.7	6.2	1.3	11.3	4.0	0.0	3.5	0.0	2.4	15.2	4.6	0.0	2.6	0.6	2.2	15.3	19.0	0.0	8.9	0.0	23.6	9.7	10.2	3.0
2	1.8	0.0	1.9	2.7	4.1	0.0	3.6	0.0	1.4	3.8	4.9	0.0	3.3	0.0	2.9	4.1	20.4	0.0	9.6	0.0	23.4	2.1	9.7	0.8
3	1.9	0.4	1.6	8.4	4.2	0.0	3.8	0.0	2.3	0.0	5.4	0.0	3.7	0.9	3.3	1.0	22.1	0.0	10.5	0.3	21.5	0.7	9.0	0.3
4	2.0	0.0	1.9	0.0	4.2	2.0	3.9	0.0	2.7	0.0	5.9	9.0	4.0	1.4	1.9	4.0	24.1	0.0	11.2	1.4	20.2	3.0	4.0	22.6
5	2.2	0.0	2.4	0.0	4.3	0.0	4.0	0.0	2.9	2.4	4.1	23.5	4.1	0.3	2.1	3.5	26.4	0.0	10.8	4.4	19.2	0.1	1.7	1.7
6	2.3	0.0	2.7	0.0	4.3	0.0	4.2	0.0	2.4	14.0	2.5	0.0	4.1	3.8	3.0	2.3	29.0	0.0	11.4	5.5	18.3	0.0	2.1	0.9
7	2.5	5.5	2.9	0.5	4.3	0.0	4.3	0.3	1.8	1.4	3.0	0.9	2.0	8.1	2.7	2.8	31.9	0.0	10.8	5.5	17.3	0.0	2.3	2.1
8	2.5	3.5	3.1	0.1	4.4	0.1	4.4	0.0	2.4	0.0	3.1	2.8	1.9	9.3	2.6	4.6	35.0	0.0	10.2	0.0	16.5	0.0	1.3	13.0
9	2.6	0.0	3.2	4.3	4.4	0.0	4.5	0.0	2.8	0.0	3.1	0.3	2.4	9.5	3.3	2.9	38.1	0.0	10.0	0.0	15.9	0.0	1.9	4.7
10	2.8	0.0	3.1	6.2	4.5	0.0	4.6	0.0	3.1	1.0	3.4	0.0	3.3	8.5	3.8	3.7	40.2	0.2	10.0	0.0	15.4	0.0	2.1	2.1
11	2.9	0.0	2.5	0.0	4.6	2.6	4.7	2.9	2.3	22.7	3.8	0.0	2.8	8.4	4.3	3.2	42.6	0.0	10.4	0.0	15.1	0.0	2.4	2.1
12	3.1	0.0	2.6	0.0	4.5	0.3	3.9	7.8	2.1	0.1	4.3	0.0	3.4	5.8	4.8	1.6	45.9	0.0	10.9	0.0	14.8	0.0	2.4	0.1
13	3.1	16.0	2.9	0.0	4.3	3.1	2.6	0.0	2.7	0.0	4.8	0.0	1.7	13.4	5.3	0.8	49.3	0.0	11.5	0.7	14.6	0.1	2.5	0.0
14	0.2	22.9	3.2	0.0	4.0	4.6	2.7	0.0	3.0	0.3	5.5	0.0	2.5	16.8	5.9	0.1	53.4	0.5	12.0	0.0	14.4	4.4	2.6	0.0
15	1.1	2.8	3.4	0.3	2.0	9.4	2.9	0.0	3.2	6.6	6.3	0.0	1.8	39.8	6.5	0.0	56.5	1.4	12.7	0.0	14.0	0.0	2.6	0.0
16	1.9	0.0	3.4	0.7	1.4	1.1	3.1	0.0	1.7	11.8	7.2	0.0	2.6	3.5	7.0	0.0	33.0	24.3	13.4	0.0	13.5	0.0	2.6	2.3
17	2.3	2.4	2.2	0.8	1.9	2.7	3.3	0.0	1.7	3.2	7.9	0.0	3.1	0.6	7.5	0.0	13.8	0.0	14.1	0.0	13.1	0.0	2.3	6.0
18	2.5	4.8	2.1	0.0	2.1	1.8	3.5	0.0	2.1	1.2	8.8	0.0	3.5	0.2	8.0	0.1	17.8	0.0	14.9	0.0	12.8	0.0	1.9	3.2
19	2.5	0.5	2.4	0.1	2.3	0.0	3.6	0.0	2.3	11.5	9.6	0.0	4.0	0.0	8.6	0.0	9.6	41.5	16.0	0.1	12.6	0.0	2.1	0.0
20	2.7	0.3	2.7	0.0	2.6	0.0	3.8	0.7	1.8	0.4	10.5	4.7	4.4	0.0	9.2	0.0	3.3	0.2	17.3	0.0	12.4	0.3	2.5	0.1
21	2.2	0.4	2.9	0.0	2.8	0.0	3.9	1.9	2.3	23.4	10.7	11.4	4.9	0.0	9.9	0.0	3.8	0.0	18.2	2.9	12.3	0.5	2.7	0.0
22	1.3	6.6	3.1	0.0	3.0	0.0	4.0	0.0	2.0	1.7	4.0	19.2	5.4	0.0	10.4	1.9	4.3	0.0	19.7	0.2	12.2	0.7	2.9	0.0
23	1.3	2.9	3.3	0.0	3.2	0.0	4.1	0.0	2.2	5.5	2.5	6.9	5.9	0.0	11.0	0.2	4.7	0.0	21.3	0.0	12.1	0.0	3.1	2.9
24	1.9	5.6	3.4	0.0	3.4	0.0	4.2	0.0	2.9	5.7	1.7	20.2	6.3	7.1	11.6	0.0	5.3	0.0	22.8	0.0	11.9	0.0	3.1	8.8
25	2.2	5.0	3.5	0.0	3.5	0.0	4.4	0.0	2.0	0.1	2.0	7.8	4.0	18.0	12.3	0.0	5.8	0.0	24.2	0.0	11.9	0.8	1.3	10.3
26	2.4	1.2	3.7	0.0	3.6	0.0	4.5	0.0	2.8	0.0	2.9	0.0	2.6	4.6	13.0	0.0	5.8	2.5	25.7	0.0	11.8	1.4	1.0	14.1
27	2.5	1.8	3.8	0.0	3.4	6.0	4.7	0.0	3.0	0.4	3.4	7.3	3.1	1.2	13.9	0.0	6.3	0.0	26.9	0.0	11.6	1.3	1.7	7.7
28	1.2	18.5	3.9	0.0	3.0	0.0	4.9	1.1	3.2	0.0	3.3	62.2	2.5	13.2	14.9	0.1	6.9	0.1	27.6	0.0	11.3	0.4	1.2	9.1
29	1.1	15.8			3.1	0.0	5.1	0.7	3.5	0.0	2.0	38.5	2.8	0.0	15.8	0.1	7.5	0.0	28.3	0.0	11.0	0.9	1.3	15.6
30	1.6	6.8			3.2	1.5	5.2	13.8	3.8	0.0	2.3	13.1	3.6	1.1	16.7	0.0	8.2	0.0	29.0	0.5	10.6	0.7	1.9	0.5
31	1.7	0.5			3.3	0.0			4.2	0.0			4.0	0.9	17.8	0.0			29.7	0.2			2.4	0.1

SS35 = Tagesmittelwerte Saugspannung (cbar) in 35 cm Tiefe; N = Tagessummen Niederschlag (mm);

		Jan	Feb	März	April	Mai	Juni	Juli	Aug	Sept	Okt	Nov	Dez
Niederschlag (mm)	Monatssumme	130.4	35.4	35.2	29.3	132.3	228.1	177.0	52.0	70.7	21.7	27.1	134.1
Saugspannung 20 cm (cbar)	Monatsmittel	2.8	3.0	3.7	4.5	2.8	7.3	4.1	18.8	49.4	41.6	14.1	2.1
	Maximum	11.1	4.8	5.3	6.9	5.8	28.4	12.4	59.0	80.0	74.4	73.0	6.5
	Minimum	0.1	0.4	0.3	0.8	0.4	0.5	0.3	0.4	3.7	5.1	5.8	0.1
Saugspannung 35 cm (cbar)	Monatsmittel	2.1	2.8	3.5	4.0	2.6	4.8	3.4	7.8	22.3	16.5	14.8	2.9
	Maximum	3.2	4.0	4.7	5.3	4.9	11.0	6.6	18.5	56.9	30.1	30.2	10.4
	Minimum	-0.1	0.7	0.4	2.6	0.4	0.8	0.6	0.6	1.6	8.6	10.4	0.2
Bodentemperatur 20 cm (°C)	Monatsmittel	4.7	5.4	6.7	9.6	11.8	16.0	16.8	16.9	16.3	13.7	9.2	5.5
	Maximum	35.2	35.9	36.1	37.8	38.5	40.9	40.9	40.8	40.5	39.3	37.4	35.3
	Minimum	2.1	1.7	3.6	5.5	7.5	11.0	13.9	14.2	13.2	9.3	4.7	3.2
Bodentemperatur 35 cm (°C)	Monatsmittel	3.4	4.2	5.0	7.1	9.1	13.7	15.1	15.5	14.6	11.1	7.5	4.3
	Maximum	4.2	5.6	7.0	8.9	10.7	15.4	16.4	17.2	15.4	13.6	10.0	5.9
	Minimum	2.3	2.2	3.8	5.6	7.7	10.6	13.8	14.3	13.3	9.5	5.2	3.5
Lufttemperatur (°C)	Monatsmittel	0.0	3.8	5.3	7.7	9.8	17.5	16.8	16.2	15.4	8.9	3.0	1.2
	Maximum	7.9	15.7	22.6	22.4	23.4	28.1	26.2	29.2	24.4	19.0	10.9	12.3
	Minimum	-6.4	-10.0	-2.9	-3.8	1.9	10.3	10.8	10.4	7.8	2.1	-1.7	-5.2





Darstellung der Tagesmittelwerte; Lücken = keine Daten

Bodenmesswerte

Mühledorf

Wald

Saure Braunerde

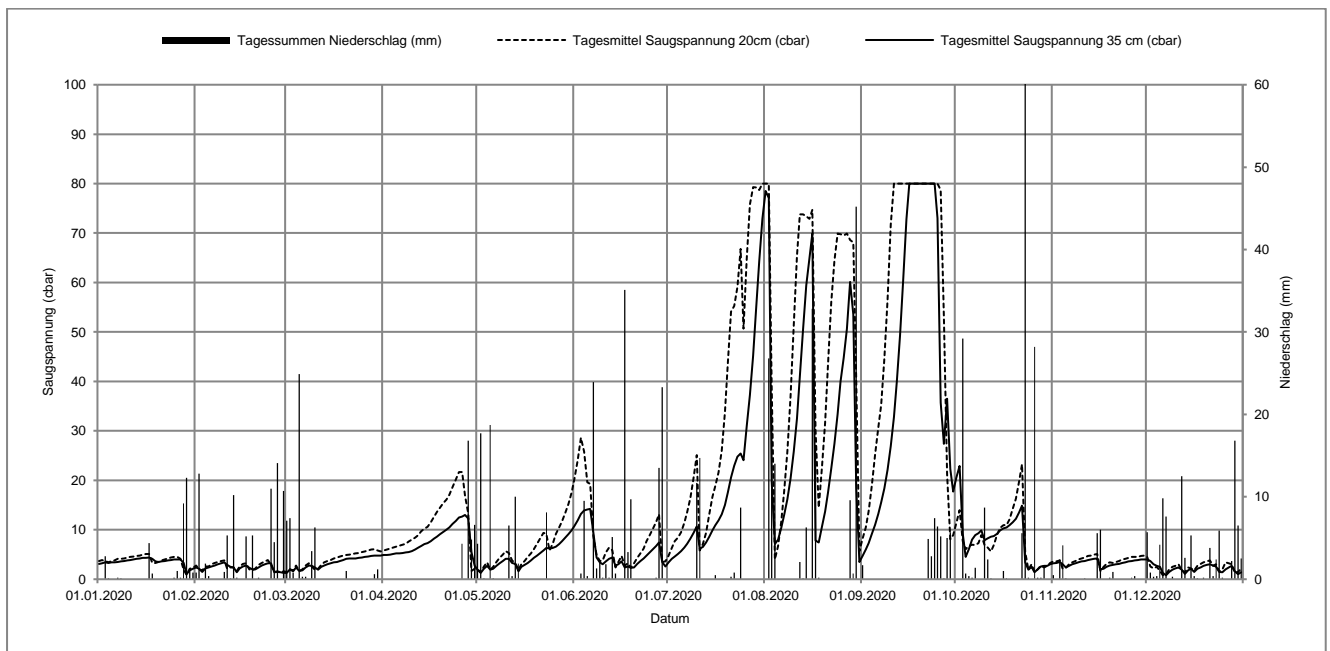
Koordinaten 604033 / 220559, 633 müM

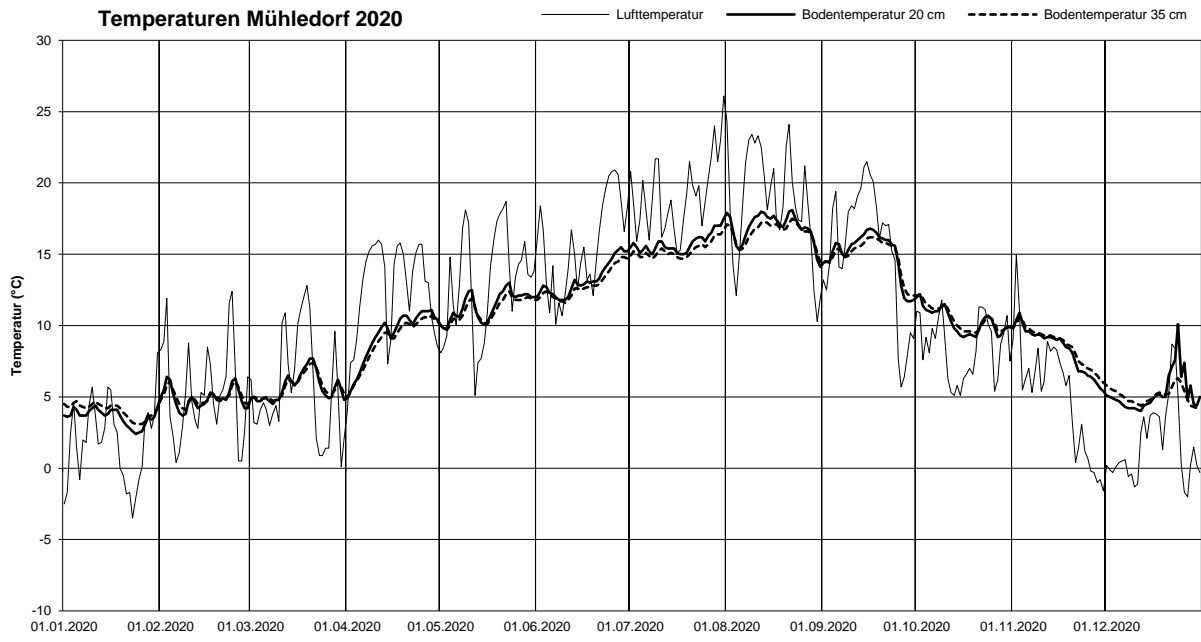
mittelschwerer Boden

2020 Tag	Jan		Feb		Mär		Apr		Mai		Jun		Jul		Aug		Sep		Okt		Nov		Dez	
	SS35 (cbar)	N (mm)	SS35 (cbar)	N (mm)	SS35 (cbar)	N (mm)	SS35 (cbar)	N (mm)	SS35 (cbar)	N (mm)	SS35 (cbar)	N (mm)	SS35 (cbar)	N (mm)	SS35 (cbar)	N (mm)	SS35 (cbar)	N (mm)	SS35 (cbar)	N (mm)	SS35 (cbar)	N (mm)	SS35 (cbar)	N (mm)
1	3.1	0.0	2.4	0.8	1.3	7.1	4.9	0.0	1.9	4.3	10.8	0.0	3.4	0.0	78.5	0.0	4.7	1.7	20.6	0.0	3.2	0.5	4.0	5.7
2	3.2	0.0	2.1	12.8	2.0	7.4	4.9	0.0	1.3	17.7	11.9	0.0	4.1	0.0	77.1	26.8	6.0	0.0	22.9	0.0	3.3	0.0	3.7	0.8
3	3.4	2.8	1.5	0.1	1.6	0.8	5.0	0.0	2.1	0.1	13.2	0.7	4.6	0.0	19.8	20.5	7.3	0.0	9.2	29.2	3.5	2.4	3.0	0.3
4	3.3	0.1	2.2	1.9	2.4	0.0	5.1	0.0	2.7	0.0	13.9	9.5	5.1	0.0	7.1	14.0	9.2	0.0	4.5	0.7	3.0	4.1	2.7	0.4
5	3.4	0.0	2.4	0.4	1.7	24.9	5.2	0.0	1.9	18.7	14.1	0.4	5.7	0.0	8.0	0.0	11.0	0.0	6.1	0.4	2.4	0.1	2.5	4.2
6	3.4	0.0	2.6	0.0	1.8	0.3	5.2	0.0	2.1	0.1	14.2	0.0	6.4	0.0	10.4	0.0	13.2	0.0	8.0	0.2	2.7	0.0	1.3	9.8
7	3.5	0.2	2.8	0.0	2.4	0.3	5.3	0.0	2.7	0.0	9.4	23.9	7.2	0.0	13.0	0.0	15.5	0.0	8.9	1.4	3.0	0.0	0.8	7.6
8	3.6	0.1	3.0	0.0	2.8	0.0	5.4	0.0	3.2	0.0	4.4	1.3	8.2	0.0	16.2	0.0	18.4	0.0	9.3	0.0	3.2	0.0	1.5	0.0
9	3.7	0.0	3.2	0.0	2.7	3.4	5.5	0.0	3.7	0.0	3.4	2.3	9.4	0.0	20.4	0.0	22.1	0.0	9.9	0.0	3.4	0.0	1.9	0.3
10	3.8	0.0	3.4	0.9	2.4	6.3	5.7	0.0	4.1	0.0	3.0	0.2	10.7	11.7	25.8	0.0	26.9	0.0	7.9	8.7	3.6	0.0	2.2	0.0
11	3.9	0.0	2.9	5.3	1.9	0.0	6.0	0.0	4.1	6.5	3.6	1.8	6.2	14.7	32.5	0.0	32.8	0.0	8.3	2.4	3.7	0.1	2.4	0.0
12	4.0	0.0	2.5	0.1	2.5	0.0	6.4	0.0	3.3	0.4	4.1	0.2	6.5	0.0	41.0	2.1	40.0	0.0	8.6	0.1	3.9	0.0	1.9	12.5
13	4.1	0.0	2.4	10.2	2.8	0.0	6.7	0.0	3.1	10.0	4.4	5.1	7.4	0.0	50.5	0.1	49.3	0.0	8.7	0.0	4.0	0.0	1.1	2.6
14	4.2	0.0	1.4	0.2	3.0	0.0	7.1	0.0	1.6	1.9	2.8	0.7	8.6	0.0	59.4	6.3	60.7	0.0	9.2	0.0	4.1	0.0	1.8	0.0
15	4.3	0.0	2.2	0.0	3.2	0.0	7.3	0.0	2.5	0.0	3.0	0.0	9.9	0.0	64.9	0.0	72.8	0.0	9.9	0.0	4.2	5.6	2.1	5.3
16	4.3	0.0	2.6	0.0	3.4	0.0	7.7	0.0	2.9	0.0	3.6	0.0	10.9	0.5	69.9	32.8	80.0	0.0	10.3	1.0	2.0	6.0	1.5	0.4
17	4.4	4.4	2.8	5.2	3.5	0.0	8.2	0.0	3.3	0.0	2.4	35.1	11.9	0.0	7.8	16.3	80.0	0.0	10.5	0.1	2.1	0.0	2.1	0.1
18	4.1	0.7	2.3	0.0	3.7	0.0	8.6	0.0	3.8	0.0	2.6	3.3	13.1	0.0	7.4	0.2	80.0	0.0	10.9	0.0	2.5	0.0	2.4	0.0
19	3.6	0.0	2.0	5.3	3.9	0.0	9.1	0.0	4.3	0.0	2.3	9.7	15.0	0.0	10.6	0.0	80.0	0.0	11.5	0.0	2.8	0.2	2.7	0.2
20	3.5	0.0	2.0	0.0	4.1	1.0	9.6	0.0	4.8	0.0	2.4	0.0	17.5	0.0	13.7	0.0	80.0	0.0	12.2	0.0	2.9	0.9	2.9	0.0
21	3.6	0.0	2.4	0.2	4.2	0.0	10.0	0.0	5.3	0.0	3.1	0.0	20.6	0.3	17.5	0.0	80.0	0.0	13.5	0.0	3.0	0.0	3.0	3.8
22	3.7	0.0	2.8	0.0	4.2	0.0	10.5	0.0	5.8	0.0	3.7	0.0	23.0	0.8	22.3	0.0	80.0	4.9	14.9	5.6	3.1	0.0	2.8	0.4
23	3.8	0.0	3.0	0.0	4.2	0.0	11.2	0.0	6.3	8.1	4.2	0.0	24.8	0.0	27.4	0.0	80.0	2.8	3.4	61.6	3.3	0.0	2.6	2.4
24	3.9	0.0	3.2	0.0	4.3	0.0	11.8	0.0	6.2	0.0	4.8	0.0	25.4	8.7	33.4	0.0	80.0	7.4	1.9	0.2	3.4	0.0	1.5	5.9
25	4.0	0.2	3.2	11.0	4.4	0.0	12.5	0.0	6.3	0.0	5.4	0.0	24.1	0.0	39.9	0.0	73.0	6.4	2.5	0.0	3.6	0.0	1.4	0.2
26	4.0	1.0	1.4	4.5	4.5	0.0	12.7	4.3	6.6	0.0	6.1	0.0	30.9	0.0	44.8	0.0	35.7	5.2	1.4	28.2	3.7	0.2	2.0	0.0
27	4.0	0.2	1.5	14.1	4.6	0.0	13.0	0.0	7.1	0.0	6.7	0.2	37.3	0.0	50.6	0.0	27.4	0.1	2.0	0.2	3.8	0.4	2.4	0.0
28	3.3	9.2	1.4	0.0	4.7	0.0	12.3	16.8	7.7	0.0	7.4	13.5	45.2	0.0	60.1	9.6	36.5	5.0	2.6	0.2	3.9	0.0	2.7	2.2
29	1.0	12.3	1.3	10.7	4.8	0.6	5.5	4.8	8.4	0.0	3.5	23.3	54.3	0.0	53.5	0.7	22.3	5.7	2.7	1.7	4.0	0.0	1.6	16.8
30	1.8	1.1			4.8	1.2	2.8	6.6	9.1	0.0	2.6	0.0	64.2	0.0	18.9	45.2	17.7	0.0	2.7	0.0	4.0	0.0	1.0	6.5
31	2.1	0.8			4.8	0.0			9.9	0.0			72.9	0.0	3.5	0.0			3.0	0.0			1.4	2.5

SS35 = Tagesmittelwerte Saugspannung (cbar) in 35 cm Tiefe; N = Tagessummen Niederschlag (mm);

		Jan	Feb	März	April	Mai	Juni	Juli	Aug	Sept	Okt	Nov	Dez
Niederschlag (mm)	Monatssumme	33.1	83.7	53.3	32.5	67.8	131.2	36.7	174.6	39.2	141.9	20.5	90.9
Saugspannung 20 cm (cbar)	Monatsmittel	3.9	2.6	3.9	11.1	6.3	9.1	34.4	48.7	56.1	8.2	3.8	2.4
	Maximum	5.6	4.1	6.2	24.4	19.5	31.8	80.0	80.0	80.0	24.3	5.2	9.9
	Minimum	0.1	0.3	0.2	0.6	0.5	0.6	3.9	2.4	0.0	0.4	0.8	0.4
Saugspannung 35 cm (cbar)	Monatsmittel	3.5	2.4	3.3	7.7	4.5	5.9	19.3	32.3	44.0	8.3	3.3	2.2
	Maximum	4.4	3.4	5.0	13.5	10.3	14.5	76.5	80.0	80.0	24.7	4.3	4.0
	Minimum	0.6	0.2	0.2	1.4	0.4	0.5	3.2	0.5	0.0	0.2	1.4	0.3
Bodentemperatur 20 cm (°C)	Monatsmittel	3.6	4.9	5.7	9.2	11.4	13.2	15.8	16.9	15.1	10.3	8.3	5.2
	Maximum	4.8	6.6	8.0	11.4	13.1	15.7	18.1	18.4	17.0	12.3	11.0	21.1
	Minimum	2.4	3.5	4.2	4.5	9.5	11.7	14.8	13.9	0.0	8.1	5.3	2.7
Bodentemperatur 35 cm (°C)	Monatsmittel	4.1	5.0	5.7	8.9	11.1	12.9	15.3	16.5	14.9	10.5	8.6	5.1
	Maximum	4.8	6.2	7.5	10.7	12.4	14.9	17.1	17.6	16.3	12.3	10.7	6.4
	Minimum	3.1	4.1	4.6	4.9	9.6	11.6	14.6	14.3	0.0	8.5	5.9	2.7
Lufttemperatur (°C)	Monatsmittel	1.8	5.4	5.6	12.5	13.1	15.6	19.2	18.7	15.2	8.4	5.1	1.7
	Maximum	11.2	16.6	18.4	22.8	23.6	26.2	33.0	30.6	26.5	15.1	18.5	10.6
	Minimum	-3.9	-2.3	-3.8	-2.0	1.8	8.2	11.4	8.5	-8.3	2.3	-1.9	-4.7





Darstellung der Tagesmittelwerte; Lücken = keine Daten

Bodenmesswerte

Mühledorf

Wald

Saure Braunerde

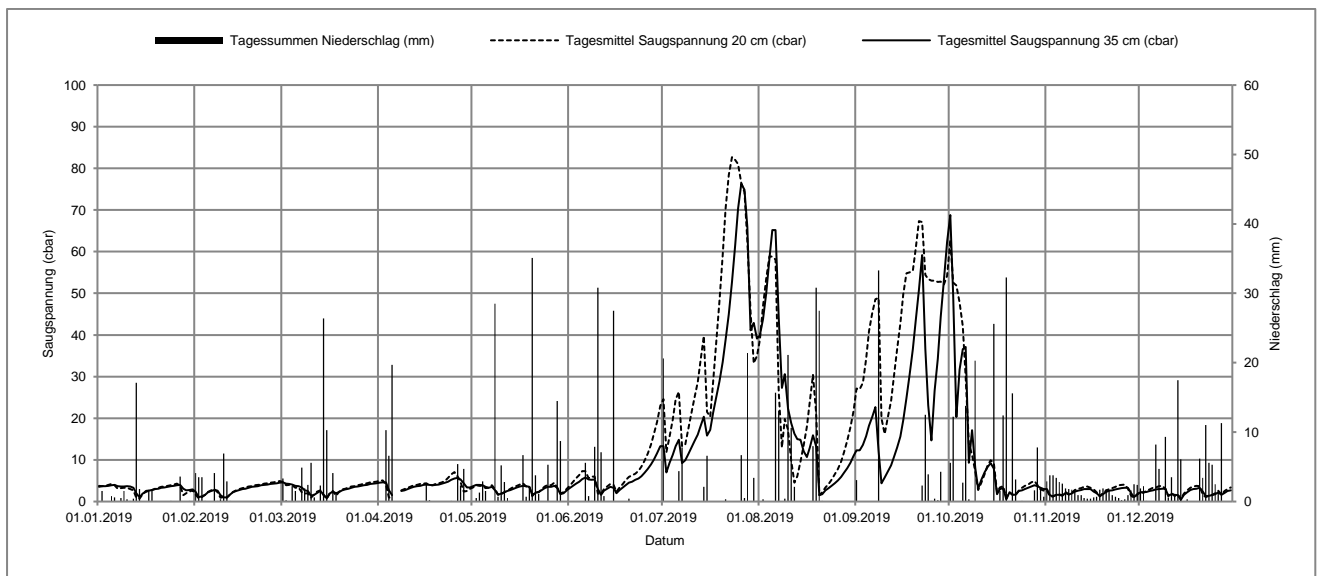
Koordinaten 604033 / 220559, 633 müM

mittelschwerer Boden

2019 Tag	Jan		Feb		Mär		Apr		Mai		Jun		Jul		Aug		Sep		Okt		Nov		Dez	
	SS35 (cbar)	N (mm)	SS35 (cbar)	N (mm)	SS35 (cbar)	N (mm)	SS35 (cbar)	N (mm)	SS35 (cbar)	N (mm)	SS35 (cbar)	N (mm)	SS35 (cbar)	N (mm)	SS35 (cbar)	N (mm)	SS35 (cbar)	N (mm)	SS35 (cbar)	N (mm)	SS35 (cbar)	N (mm)	SS35 (cbar)	N (mm)
1	3.5	0.0	2.4	4.1	4.6	3.3	4.5	0.0	3.7	0.0	3.2	0.0	13.3	20.6	39.9	0.0	12.3	3.1	68.8	5.6	3.0	2.9	2.2	1.9
2	3.7	1.5	1.1	3.5	4.3	0.2	4.6	0.0	4.0	0.5	3.8	0.0	7.0	0.0	43.8	0.3	12.3	0.0	49.5	12.2	1.5	3.8	2.2	2.2
3	3.7	0.0	1.2	3.5	4.2	0.0	4.6	10.3	4.0	1.3	4.3	0.0	9.3	0.0	50.0	0.0	13.6	0.0	20.3	0.0	1.2	3.8	2.3	0.1
4	3.8	0.0	1.6	0.1	4.1	2.2	2.8	6.6	3.9	2.9	4.8	0.0	11.2	0.0	58.3	0.0	15.7	0.0	31.7	0.0	1.6	3.4	2.5	0.0
5	3.9	0.8	2.2	0.0	3.8	1.5	1.5	19.7	3.5	1.5	5.4	0.0	13.3	0.0	65.2	0.0	18.2	0.0	36.6	2.7	1.6	2.8	2.7	0.0
6	4.0	0.6	2.5	0.0	3.7	0.0	0.0	0.0	3.3	0.0	5.8	5.6	14.8	4.4	65.2	15.7	20.3	0.0	37.1	13.8	1.4	2.6	2.9	8.2
7	3.7	0.0	2.8	4.1	3.4	4.9	0.0	0.0	3.5	0.0	5.3	0.8	9.2	7.8	44.2	13.1	22.7	0.0	9.3	0.3	2.1	1.9	3.0	4.7
8	3.6	0.5	2.6	0.1	2.7	1.9	2.5	0.0	2.7	28.5	5.2	0.1	9.9	0.0	27.3	0.0	12.1	33.3	17.1	0.0	1.7	1.8	3.1	0.0
9	3.6	1.5	1.5	0.3	2.5	2.4	2.7	0.0	1.6	0.7	5.3	7.9	11.3	0.0	30.6	0.4	4.4	0.0	8.1	20.3	1.9	1.7	3.1	9.3
10	3.7	0.3	1.0	6.9	1.4	5.6	3.0	0.0	1.9	5.2	3.0	30.8	12.9	0.0	22.4	21.1	5.8	0.0	3.1	0.0	2.4	1.4	1.4	0.6
11	3.6	0.1	1.0	2.9	1.6	0.6	3.3	0.0	2.2	2.8	1.6	7.1	14.5	0.0	18.8	10.6	7.2	0.0	5.2	0.0	2.6	0.9	1.8	3.5
12	3.3	0.4	1.7	0.1	2.1	0.0	3.5	0.0	2.5	0.5	2.6	0.8	16.1	0.0	16.3	2.1	8.7	0.0	7.0	0.0	2.8	0.9	1.6	0.7
13	2.0	17.1	2.2	0.0	2.5	2.3	3.7	0.0	2.8	0.0	3.1	0.0	18.1	0.0	15.0	0.0	10.7	0.0	8.2	0.0	3.0	0.5	1.5	17.5
14	1.0	1.8	2.5	0.0	1.7	26.4	3.8	0.0	3.1	0.0	3.5	0.0	20.4	2.1	14.8	0.0	13.0	0.0	9.2	0.0	3.0	0.4	0.4	6.1
15	1.9	0.0	2.8	0.0	0.8	10.3	4.0	0.0	3.4	0.0	3.3	27.5	15.8	6.6	12.1	0.0	15.6	0.0	7.9	25.6	3.0	0.4	1.6	0.0
16	2.3	0.0	3.0	0.0	1.9	0.0	4.1	2.4	3.6	0.0	2.0	0.0	17.2	0.0	10.7	0.0	19.5	0.0	1.8	0.0	2.4	0.6	2.2	0.3
17	2.6	1.7	3.1	0.0	2.4	4.1	4.0	0.2	3.8	6.7	2.8	0.0	21.3	0.0	12.9	0.0	24.8	0.0	3.0	1.5	2.0	0.7	2.8	0.0
18	2.8	1.6	3.3	0.0	2.0	1.3	3.9	0.0	3.7	0.7	3.4	0.0	25.1	0.0	15.9	8.0	30.5	0.0	3.2	12.4	1.3	1.7	3.0	0.0
19	3.0	0.0	3.5	0.0	2.3	0.0	4.0	0.0	3.5	2.2	4.0	0.0	28.9	0.0	13.2	30.8	36.6	0.0	0.5	32.3	1.8	1.9	3.1	0.0
20	3.1	0.0	3.6	0.0	2.7	0.0	4.1	0.0	1.5	35.1	4.5	0.4	33.5	0.0	1.5	27.5	43.4	0.0	2.2	0.0	2.3	1.8	3.3	6.2
21	3.3	0.0	3.7	0.0	2.9	0.0	4.3	0.0	2.1	3.8	4.8	0.0	38.8	0.3	1.8	0.1	50.8	0.0	1.7	15.6	2.6	1.5	2.4	3.4
22	3.4	0.0	3.9	0.0	3.1	0.0	4.5	0.0	2.3	1.1	5.2	0.0	45.0	0.0	2.7	0.0	59.2	2.3	1.6	3.2	2.7	0.9	1.3	11.0
23	3.5	0.0	4.0	0.0	3.3	0.0	4.8	0.0	2.8	0.0	5.5	0.0	52.7	0.0	3.2	0.0	36.7	12.5	2.5	0.0	2.9	0.7	1.4	5.6
24	3.7	0.1	4.1	0.0	3.5	0.0	5.2	0.1	3.2	0.0	6.1	0.0	61.6	0.0	3.8	0.0	23.1	3.9	2.7	0.1	3.1	0.5	1.5	5.3
25	3.8	0.0	4.2	0.0	3.6	0.0	5.5	0.0	3.5	5.3	6.9	0.0	70.3	0.0	4.4	0.0	14.7	0.1	3.0	0.0	3.2	0.2	1.8	2.5
26	3.9	0.0	4.3	0.0	3.8	0.0	5.7	5.4	3.5	0.0	7.8	0.0	76.3	6.7	5.1	0.0	26.6	0.4	3.3	0.0	3.3	0.3	2.2	1.2
27	4.0	3.6	4.4	0.0	3.9	0.0	5.3	2.3	3.8	0.0	8.9	0.0	74.9	0.5	5.9	0.0	34.3	0.2	3.6	0.0	3.3	0.9	1.6	11.3
28	3.1	0.0	4.5	0.0	4.0	0.0	4.4	4.7	3.3	14.5	10.1	0.0	65.9	21.4	6.9	0.0	44.3	4.3	3.9	1.6	2.0	1.6	2.1	0.0
29	2.7	0.0			4.2	0.0	3.4	0.0	1.8	8.7	11.6	0.0	41.1	0.0	8.0	0.0	53.1	0.0	3.7	7.8	1.1	2.5	2.5	0.0
30	2.8	0.1			4.3	0.0	3.4	0.0	2.0	0.0	13.3	0.0	42.9	3.4	9.3	0.0	62.3	0.0	3.3	1.8	1.7	2.4	2.7	0.0
31	2.9	0.0			4.4	0.0			2.7	0.0			39.1	0.1	11.0	0.0			3.0	0.7			2.9	0.0

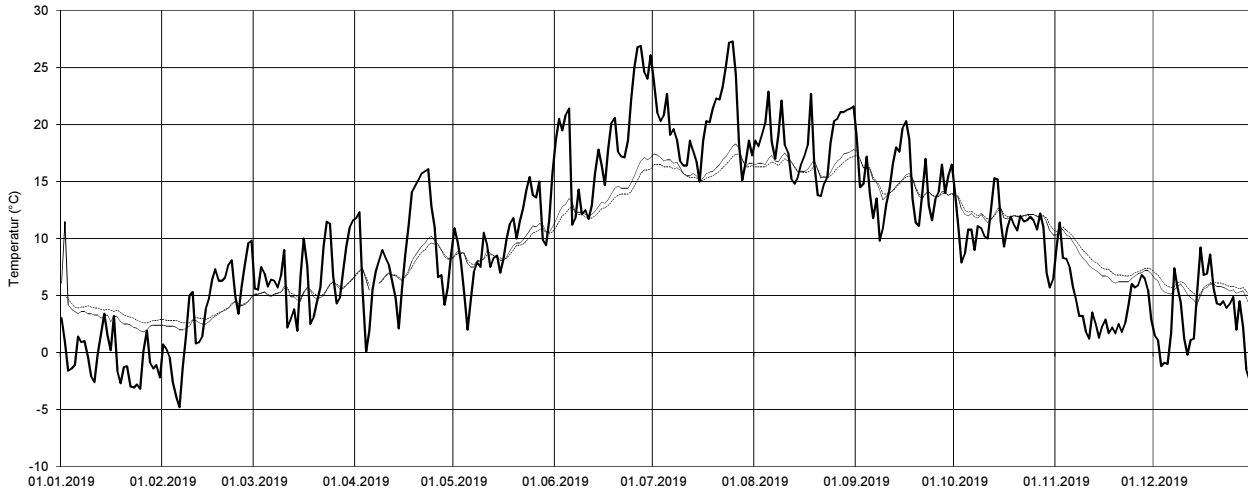
SS35 = Tagesmittelwerte Saugspannung (cbar) in 35 cm Tiefe; N = Tagessummen Niederschlag (mm);

		Jan	Feb	März	April	Mai	Juni	Juli	Aug	Sept	Okt	Nov	Dez
Niederschlag (mm)	Monatssumme	151.6	47.7	82.5	9.2	49.9	114.8	100.7	9.2	41.7	30.8	25.5	122.1
Saugspannung 20 cm (cbar)	Monatsmittel	2.7	3.4	3.0	5.4	5.1	7.4	21.3	63.8	37.5	78.6	75.9	4.9
	Maximum	4.8	5.7	6.1	15.9	16.6	29.5	78.0	80.0	80.0	80.0	80.0	43.8
	Minimum	0.2	0.2	0.2	1.2	0.5	0.5	0.9	6.3	-0.8	71.6	40.1	0.2
Saugspannung 35 cm (cbar)	Monatsmittel	2.5	3.0	2.7	4.3	4.5	5.3	12.7	76.4	79.8	79.5	79.6	11.0
	Maximum	4.0	4.5	4.9	9.4	11.5	15.2	47.6	80.0	80.0	80.0	80.0	78.7
	Minimum	0.2	0.4	0.5	1.9	1.0	0.6	0.7	40.7	74.4	72.5	66.8	0.4
Bodentemperatur 20 cm (°C)	Monatsmittel	4.7	3.1	3.0	8.3	12.6	15.1	16.1	20.7	17.9	12.1	10.3	9.0
	Maximum	5.6	5.1	5.3	11.7	14.8	16.6	22.2	63.2	54.6	25.1	29.9	37.4
	Minimum	3.6	0.7	0.7	4.4	10.0	13.9	8.1	13.7	12.6	8.1	5.9	4.1
Bodentemperatur 35 cm (°C)	Monatsmittel	4.9	3.7	3.1	7.8	11.9	14.6	16.0	17.3	15.2	12.2	8.3	5.9
	Maximum	5.5	5.2	5.0	10.8	13.9	15.5	17.7	18.6	16.4	13.6	9.7	7.7
	Minimum	4.2	1.7	1.4	4.6	10.0	13.6	14.9	15.6	13.3	8.8	6.3	4.5
Lufttemperatur (°C)	Monatsmittel	3.7	-1.6	2.9	12.8	14.2	17.2	19.8	19.8	16.1	11.0	4.6	2.7
	Maximum	10.2	6.3	12.3	25.8	23.9	26.6	30.4	32.0	27.6	21.5	12.5	10.2
	Minimum	-2.6	-13.3	-8.6	0.2	5.2	9.5	12.1	8.1	4.5	0.5	-1.9	-3.9



Temperaturen Mühledorf 2019

— Lufttemperatur — Bodentemperatur 20 cm Bodentemperatur 35 cm



Darstellung der Tagesmittelwerte; Lücken = keine Daten

Bodenmesswerte

Mühledorf

Wald

Saure Braunerde

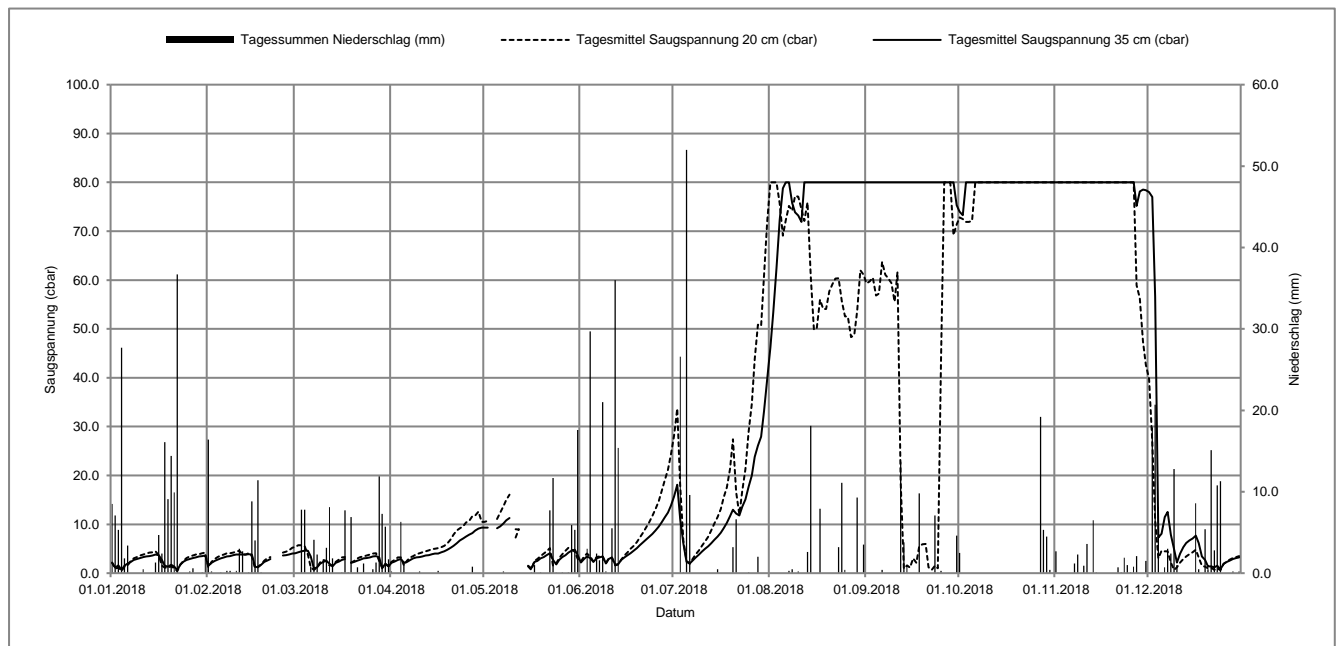
Koordinaten 604033 / 220559, 633 müM

mittelschwerer Boden

2018 Tag	Jan		Feb		Mär		Apr		Mai		Jun		Jul		Aug		Sep		Okt		Nov		Dez	
	SS35 (cbar)	N (mm)	SS35 (cbar)	N (mm)	SS35 (cbar)	N (mm)	SS35 (cbar)	N (mm)	SS35 (cbar)	N (mm)	SS35 (cbar)	N (mm)	SS35 (cbar)	N (mm)	SS35 (cbar)	N (mm)	SS35 (cbar)	N (mm)	SS35 (cbar)	N (mm)	SS35 (cbar)	N (mm)	SS35 (cbar)	N (mm)
1	2.1	8.5	1.5	16.4	4.1	0.0	2.1	0.2	9.3	0.0	2.2	0.0	15.7	0.0	46.2	0.0	>80.0	0.0	74.0	2.5	>80.0	2.7	78.0	0.1
2	1.1	7.1	2.1	0.2	4.3	0.0	2.4	0.0	9.3	0.0	2.9	0.0	18.1	0.0	53.4	0.0	>80.0	0.0	73.3	0.0	>80.0	0.0	77.0	17.9
3	1.6	5.3	2.5	0.0	4.5	7.8	2.7	0.0	0.0	0.0	3.4	3.0	11.2	26.6	62.4	0.0	>80.0	0.0	>80.0	0.0	>80.0	0.0	56.6	20.7
4	0.7	27.7	2.8	0.0	4.6	7.8	2.9	6.3	0.0	0.0	3.1	29.7	6.1	0.1	72.3	0.0	>80.0	0.0	>80.0	0.0	>80.0	0.0	7.3	8.1
5	1.5	1.8	3.0	0.1	4.6	0.0	2.1	1.4	9.2	0.0	2.3	0.0	2.3	52.0	78.8	0.0	>80.0	0.0	>80.0	0.0	>80.0	0.0	8.1	0.0
6	2.0	3.4	3.2	0.0	3.4	0.8	2.3	0.0	9.6	0.0	3.0	2.4	2.0	9.6	>80.0	0.0	>80.0	0.4	>80.0	0.0	>80.0	0.0	11.5	0.7
7	2.3	0.0	3.4	0.3	0.9	4.1	2.7	0.0	10.2	0.2	3.2	1.6	2.6	0.0	>80.0	0.3	>80.0	0.0	>80.0	0.0	>80.0	1.2	12.5	3.0
8	2.7	0.0	3.5	0.3	1.2	2.3	3.0	0.0	10.8	0.0	3.4	21.0	3.2	0.0	75.8	0.5	>80.0	0.0	>80.0	0.0	>80.0	2.3	7.9	2.4
9	2.9	0.0	3.7	0.0	1.9	0.0	3.2	0.0	11.3	0.0	2.0	0.2	3.8	0.0	73.9	0.0	>80.0	0.0	>80.0	0.0	>80.0	0.0	4.9	12.8
10	3.1	0.0	3.8	0.3	2.3	1.6	3.3	0.2	0.0	0.0	2.9	0.0	4.4	0.0	73.2	0.2	>80.0	0.0	>80.0	0.0	>80.0	0.9	2.2	1.0
11	3.3	0.5	3.8	3.0	2.5	3.1	3.4	0.0	9.0	0.0	3.2	5.5	5.0	0.0	71.9	0.0	>80.0	0.0	>80.0	0.0	>80.0	3.6	4.0	0.0
12	3.4	0.0	3.8	2.7	2.0	8.1	3.6	0.0	8.9	0.0	1.8	36.0	5.5	0.0	>80.0	0.0	>80.0	13.7	>80.0	0.0	>80.0	0.0	5.3	0.0
13	3.5	0.0	3.8	0.0	1.4	1.8	3.7	0.0	0.0	0.0	1.8	15.4	6.1	0.0	>80.0	2.6	>80.0	3.8	>80.0	0.0	>80.0	6.5	6.2	0.0
14	3.6	0.0	3.9	0.1	2.1	0.0	3.9	0.0	0.0	0.0	2.7	0.0	6.8	0.0	>80.0	18.1	>80.0	0.8	>80.0	0.0	>80.0	0.1	6.7	0.0
15	3.8	1.3	3.8	8.8	2.4	0.0	4.0	0.0	1.5	0.0	3.2	0.0	7.5	0.5	>80.0	0.0	>80.0	0.0	>80.0	0.0	>80.0	0.0	7.1	0.0
16	3.7	4.7	1.3	4.0	2.7	0.1	4.0	0.3	1.0	0.1	3.7	0.0	8.3	0.0	>80.0	0.0	>80.0	0.0	>80.0	0.0	>80.0	0.0	7.7	8.6
17	2.7	2.4	1.2	11.4	2.9	7.7	4.3	0.0	2.3	1.0	4.1	0.0	9.2	0.0	>80.0	7.9	>80.0	0.0	>80.0	0.0	>80.0	0.0	6.2	0.5
18	1.5	16.1	1.7	0.1	0.0	0.1	4.5	0.0	2.5	0.0	4.6	0.0	10.3	0.0	>80.0	0.0	>80.0	9.8	>80.0	0.0	>80.0	0.0	3.4	0.0
19	1.3	9.1	2.3	0.0	2.1	6.9	4.8	0.0	3.0	0.1	5.1	0.0	11.7	0.0	>80.0	0.0	>80.0	0.0	>80.0	0.0	>80.0	0.0	2.7	5.4
20	1.7	14.4	2.6	0.0	2.3	0.0	5.2	0.0	3.3	0.0	5.7	0.0	13.0	3.2	>80.0	0.0	>80.0	0.0	>80.0	0.0	>80.0	0.0	1.4	0.5
21	1.3	9.9	2.9	0.0	2.6	0.7	5.6	0.0	3.7	0.0	6.3	0.0	12.2	6.6	>80.0	0.0	>80.0	0.0	>80.0	0.0	>80.0	0.7	1.4	15.1
22	0.6	36.7	0.0	0.0	2.8	0.0	6.1	0.0	4.1	7.7	6.9	0.0	11.8	0.0	>80.0	0.0	>80.0	0.0	>80.0	0.0	>80.0	0.1	1.2	2.8
23	1.8	0.0	0.0	0.0	3.0	1.2	6.7	0.0	2.7	11.7	7.4	0.0	13.6	0.0	>80.0	3.2	>80.0	7.1	>80.0	0.0	>80.0	1.9	1.5	10.8
24	2.4	0.0	0.0	0.0	3.1	0.0	7.1	0.0	1.8	0.1	8.0	0.0	15.1	0.0	>80.0	11.1	>80.0	0.1	>80.0	0.0	>80.0	1.0	0.8	11.3
25	2.7	0.0	3.6	0.0	3.2	0.0	7.5	0.0	2.7	0.0	8.7	0.0	17.7	0.1	>80.0	0.4	>80.0	0.3	>80.0	0.0	>80.0	0.1	1.9	0.0
26	2.9	0.2	3.7	0.0	3.4	0.5	7.9	0.0	3.3	0.1	9.5	0.0	20.0	0.0	>80.0	0.0	>80.0	0.0	>80.0	0.0	>80.0	0.8	2.3	0.0
27	3.1	0.6	3.8	0.0	3.5	1.3	8.2	0.8	3.7	0.0	10.4	0.0	23.8	0.0	>80.0	0.0	>80.0	0.0	>80.0	19.2	75.2	2.1	2.6	0.0
28	3.2	0.0	4.0	0.0	3.2	11.9	8.7	0.0	4.2	0.1	11.4	0.0	26.1	2.0	>80.0	0.0	>80.0	0.0	>80.0	5.3	78.1	0.0	2.9	0.2
29	3.4	0.0			1.0	7.3	9.1	0.0	4.6	5.9	12.4	0.0	27.9	0.0	>80.0	9.3	>80.0	0.0	>80.0	4.5	78.5	0.0	3.1	0.0
30	3.5	0.1			1.9	5.7	9.3	0.0	4.8	5.3	13.8	0.0	33.1	0.0	>80.0	0.0	>80.0	4.6	>80.0	0.4	78.4	1.5	3.2	0.2
31	3.6	1.8			1.4	1.7			3.7	17.6			39.7	0.0	>80.0	3.5			>80.0	0.0			3.4	0.0

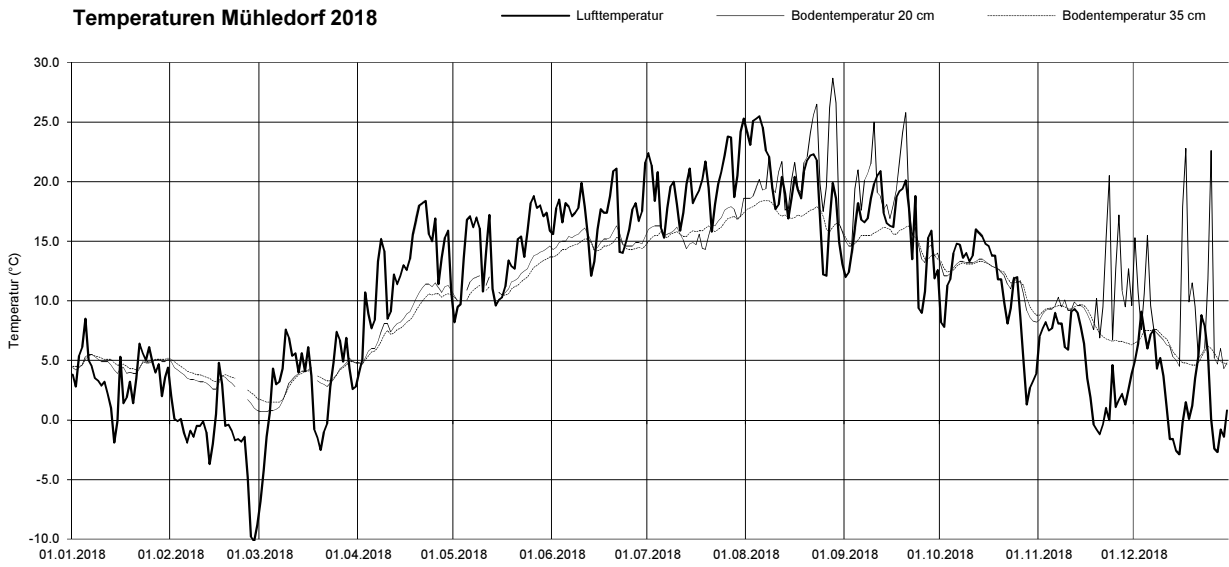
SS35 = Tagesmittelwerte Saugspannung (cbar) in 35 cm Tiefe; N = Tagessummen Niederschlag (mm);

		Jan	Feb	März	April	Mai	Juni	Juli	Aug	Sept	Okt	Nov	Dez
Niederschlag (mm)	Monatssumme	151.6	47.7	82.5	9.2	49.9	114.8	100.7	9.2	41.7	30.8	25.5	122.1
Saugspannung 20 cm (cbar)	Monatsmittel	2.7	3.4	3.0	5.4	5.1	7.4	21.3	63.8	37.5	78.6	75.9	4.9
	Maximum	4.8	5.7	6.1	15.9	16.6	29.5	78.0	>80.0	>80.0	>80.0	>80.0	43.8
	Minimum	0.2	0.2	0.2	1.2	0.5	0.5	0.9	6.3	-0.8	71.6	40.1	0.2
Saugspannung 35 cm (cbar)	Monatsmittel	2.5	3.0	2.7	4.3	4.5	5.3	12.7	76.4	79.8	79.5	79.6	11.0
	Maximum	4.0	4.5	4.9	9.4	11.5	15.2	47.6	>80.0	>80.0	>80.0	>80.0	78.7
	Minimum	0.2	0.4	0.5	1.9	1.0	0.6	0.7	40.7	74.4	72.5	66.8	0.4
Bodentemperatur 20 cm (°C)	Monatsmittel	4.7	3.1	3.0	8.3	12.6	15.1	16.1	20.7	17.9	12.1	10.3	9.0
	Maximum	5.6	5.1	5.3	11.7	14.8	16.6	22.2	63.2	54.6	25.1	29.9	37.4
	Minimum	3.6	0.7	0.7	4.4	10.0	13.9	8.1	13.7	12.6	8.1	5.9	4.1
Bodentemperatur 35 cm (°C)	Monatsmittel	4.9	3.7	3.1	7.8	11.9	14.6	16.0	17.3	15.2	12.2	8.3	5.9
	Maximum	5.5	5.2	5.0	10.8	13.9	15.5	17.7	18.6	16.4	13.6	9.7	7.7
	Minimum	4.2	1.7	1.4	4.6	10.0	13.6	14.9	15.6	13.3	8.8	6.3	4.5
Lufttemperatur (°C)	Monatsmittel	3.7	-1.6	2.9	12.8	14.2	17.2	19.8	19.8	16.1	11.0	4.6	2.7
	Maximum	10.2	6.3	12.3	25.8	23.9	26.6	30.4	32.0	27.6	21.5	12.5	10.2
	Minimum	-2.6	-13.3	-8.6	0.2	5.2	9.5	12.1	8.1	4.5	0.5	-1.9	-3.9



August – November 2018: Die Tensiometer konnten teilweise aufgrund extremer Trockenheit keine korrekten Messwerte mehr liefern

Temperaturen Mühledorf 2018



Darstellung der Tagesmittelwerte; Lücken = keine Daten

Bodenmesswerte

Mühledorf

Wald

Saure Braunerde

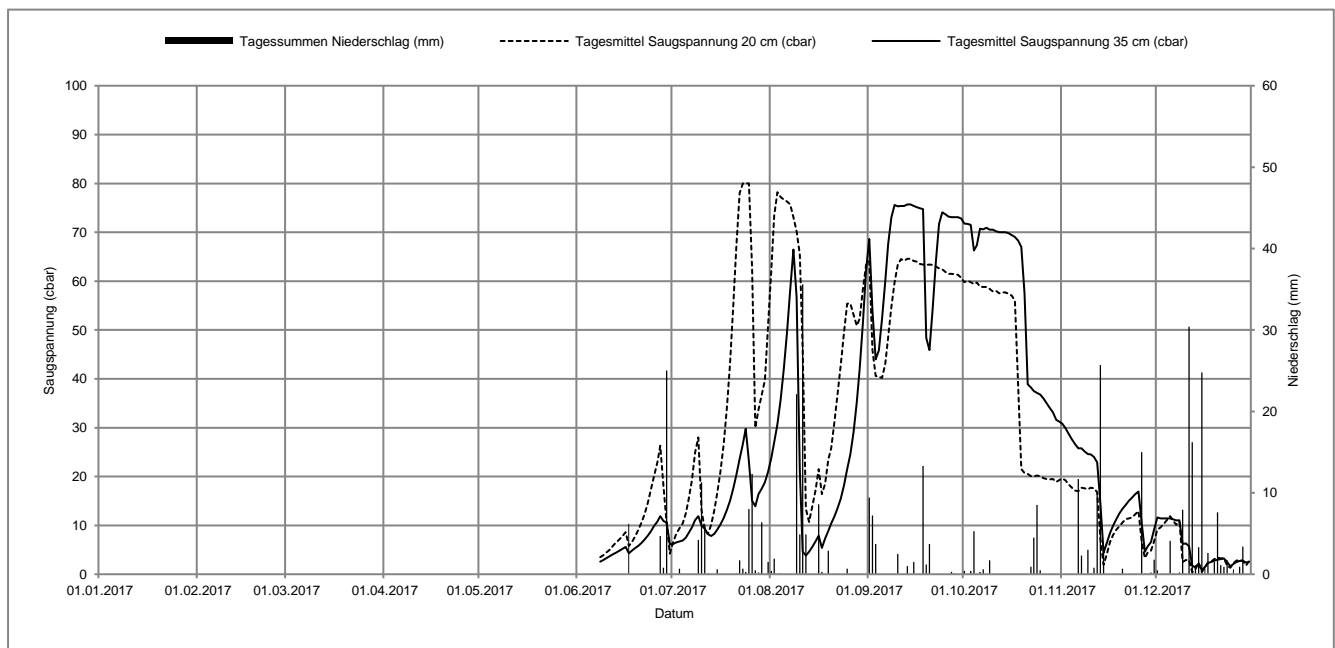
Koordinaten 604033 / 220559, 633 müM

mittelschwerer Boden

2017 Tag	Jan		Feb		Mär		Apr		Mai		Jun		Jul		Aug		Sep		Okt		Nov		Dez	
	SS35 (cbar)	N (mm)	SS35 (cbar)	N (mm)	SS35 (cbar)	N (mm)	SS35 (cbar)	N (mm)	SS35 (cbar)	N (mm)	SS35 (cbar)	N (mm)	SS35 (cbar)	N (mm)	SS35 (cbar)	N (mm)	SS35 (cbar)	N (mm)	SS35 (cbar)	N (mm)	SS35 (cbar)	N (mm)	SS35 (cbar)	N (mm)
1	-	-	-	-	-	-	-	-	-	-	-	6.5	0.0	27.0	1.9	53.9	7.2	71.7	0.0	29.9	0.0	11.4	0.0	
2	-	-	-	-	-	-	-	-	-	-	-	6.7	0.7	30.7	0.0	44.0	3.7	71.5	0.4	28.7	0.0	11.4	0.0	
3	-	-	-	-	-	-	-	-	-	-	-	6.9	0.0	35.7	0.1	45.8	0.0	66.3	5.3	27.6	0.0	11.4	0.0	
4	-	-	-	-	-	-	-	-	-	-	-	7.5	0.0	42.0	0.0	52.4	0.0	67.3	0.0	26.6	0.0	11.4	4.1	
5	-	-	-	-	-	-	-	-	-	-	-	8.5	0.0	49.5	0.0	60.0	0.0	70.7	0.3	25.8	11.7	11.2	0.1	
6	-	-	-	-	-	-	-	-	-	-	-	9.6	0.0	58.2	0.0	67.6	0.0	70.6	0.6	25.8	2.3	11.0	0.0	
7	-	-	-	-	-	-	-	-	-	-	2.6	0.0	11.1	0.0	66.5	0.0	73.0	0.0	70.9	0.0	25.1	0.0	11.0	0.2
8	-	-	-	-	-	-	-	-	-	-	2.9	0.0	11.9	4.2	56.7	22.1	75.6	0.0	70.5	1.7	24.6	3.0	6.2	7.9
9	-	-	-	-	-	-	-	-	-	-	3.3	0.0	10.0	11.3	21.4	4.9	75.3	2.5	70.5	0.0	24.5	0.1	6.3	0.0
10	-	-	-	-	-	-	-	-	-	-	3.7	0.0	9.3	6.1	4.6	35.6	75.4	0.0	70.2	0.0	24.0	0.8	5.7	30.4
11	-	-	-	-	-	-	-	-	-	-	4.1	0.0	8.2	0.1	3.8	4.9	75.4	0.0	70.0	0.0	22.9	10.0	1.7	16.2
12	-	-	-	-	-	-	-	-	-	-	4.4	0.0	7.8	0.0	4.6	0.0	75.7	1.0	70.0	0.0	14.5	25.7	1.4	1.1
13	-	-	-	-	-	-	-	-	-	-	4.8	0.0	8.3	0.0	5.6	0.0	75.7	0.0	70.0	0.0	4.4	3.0	2.2	3.3
14	-	-	-	-	-	-	-	-	-	-	5.2	0.0	9.1	0.6	6.7	0.0	75.4	1.5	69.8	0.0	6.4	0.0	0.8	24.8
15	-	-	-	-	-	-	-	-	-	-	5.6	0.0	10.2	0.0	7.9	8.6	75.1	0.0	69.4	0.0	8.4	0.0	1.5	0.9
16	-	-	-	-	-	-	-	-	-	-	4.3	6.2	11.5	0.0	5.4	0.3	74.9	0.0	69.0	0.0	10.0	0.0	2.3	2.6
17	-	-	-	-	-	-	-	-	-	-	4.8	0.0	13.1	0.0	7.3	0.0	74.7	13.3	68.3	0.0	11.3	0.0	2.5	0.0
18	-	-	-	-	-	-	-	-	-	-	5.3	0.0	15.0	0.0	8.9	2.9	48.4	1.2	67.0	0.0	12.4	0.0	2.8	1.5
19	-	-	-	-	-	-	-	-	-	-	5.8	0.0	17.5	0.0	10.4	0.0	45.9	3.7	57.5	0.0	13.4	0.7	3.0	7.6
20	-	-	-	-	-	-	-	-	-	-	6.4	0.0	20.4	0.1	11.8	0.0	54.3	0.0	38.9	0.0	14.2	0.0	3.1	1.1
21	-	-	-	-	-	-	-	-	-	-	7.1	0.0	23.6	1.7	13.5	0.0	63.9	0.0	38.2	0.9	15.0	0.0	3.2	0.9
22	-	-	-	-	-	-	-	-	-	-	7.9	0.0	26.6	0.7	15.5	0.0	71.7	0.0	37.5	4.5	15.7	0.0	2.5	1.7
23	-	-	-	-	-	-	-	-	-	-	8.8	0.0	29.8	0.3	18.2	0.0	74.1	0.0	37.1	8.5	16.4	0.0	1.6	0.0
24	-	-	-	-	-	-	-	-	-	-	9.9	0.0	23.1	8.0	21.5	0.7	73.7	0.0	36.8	0.5	16.9	0.0	2.1	0.6
25	-	-	-	-	-	-	-	-	-	-	10.8	0.0	15.0	12.3	24.6	0.0	73.2	0.0	36.0	0.0	10.6	15.0	2.5	0.0
26	-	-	-	-	-	-	-	-	-	-	11.9	4.7	13.9	0.5	29.1	0.0	73.1	0.3	35.0	0.0	4.6	0.1	2.7	0.9
27	-	-	-	-	-	-	-	-	-	-	10.9	0.8	16.4	0.2	35.2	0.0	73.1	0.1	34.0	0.0	5.7	0.1	2.8	3.4
28	-	-	-	-	-	-	-	-	-	-	10.6	25.0	17.5	6.4	42.0	0.0	73.1	0.0	33.1	0.0	6.6	0.2	2.4	0.0
29	-	-	-	-	-	-	-	-	-	-	6.1	0.1	18.8	0.0	51.3	0.0	72.8	0.0	31.6	0.0	9.2	1.8	2.6	0.0
30	-	-	-	-	-	-	-	-	-	-	6.2	0.0	21.0	1.5	62.2	0.0	71.8	0.4	31.2	0.0	11.6	0.5	1.5	21.2
31	-	-	-	-	-	-	-	-	-	-	-	-	23.8	0.4	68.6	9.4	-	-	30.8	0.0	-	-	1.6	0.0

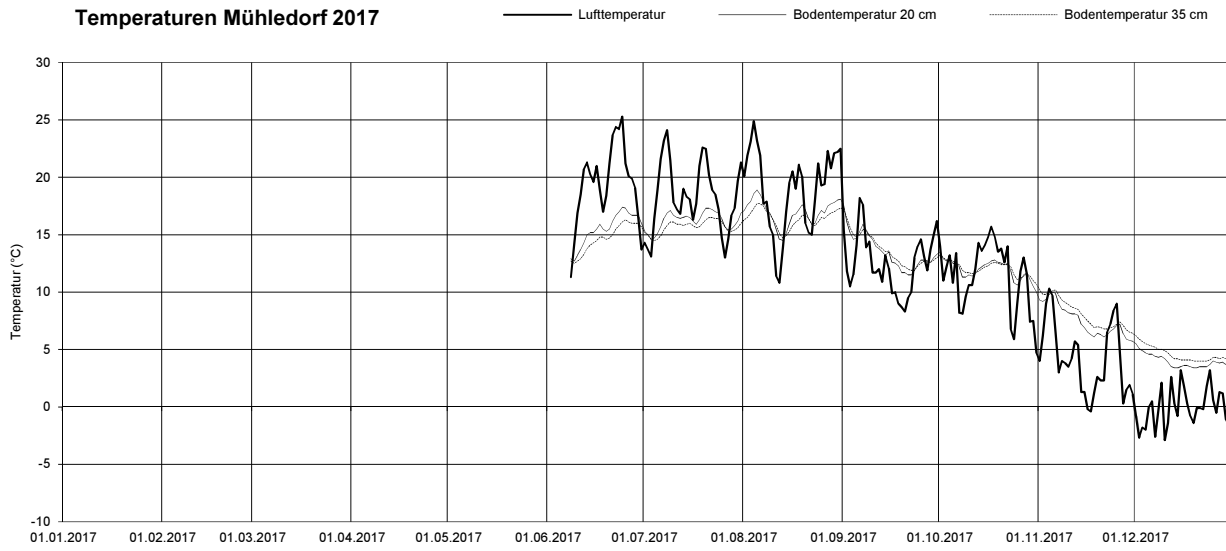
SS35 = Tagesmittelwerte Saugspannung (cbar) in 35 cm Tiefe; N = Tagessummen Niederschlag (mm);

		Jan	Feb	März	April	Mai	Juni	Juli	Aug	Sept	Okt	Nov	Dez
Niederschlag (mm)	Monatssumme	-	-	-	-	-	36.8	55.1	0.0	34.3	22.7	75.0	130.5
Saugspannung 20 cm (cbar)	Monatsmittel	-	-	-	-	-	10.5	34.9	47.9	58.5	40.3	11.5	4.1
	Maximum	-	-	-	-	-	29.3	80.0	78.5	64.9	60.2	19.5	13.7
	Minimum	-	-	-	-	-	2.6	7.4	7.8	39.6	18.7	1.4	0.2
Saugspannung 35 cm (cbar)	Monatsmittel	-	-	-	-	-	6.6	14.2	27.3	67.3	55.8	16.4	4.6
	Maximum	-	-	-	-	-	12.6	32.5	73.8	76.3	71.8	30.4	11.7
	Minimum	-	-	-	-	-	2.7	6.4	0.7	36.7	30.4	1.6	0.1
Bodentemperatur 20 cm (°C)	Monatsmittel	-	-	-	-	-	15.6	16.3	17.0	13.5	11.8	7.4	3.9
	Maximum	-	-	-	-	-	17.8	17.7	19.2	16.6	13.3	10.2	5.3
	Minimum	-	-	-	-	-	12.4	14.5	14.2	11.2	9.1	5.3	3.2
Bodentemperatur 35 cm (°C)	Monatsmittel	-	-	-	-	-	14.8	15.7	16.5	13.6	11.9	8.0	4.5
	Maximum	-	-	-	-	-	16.3	16.6	17.8	16.8	13.2	10.2	6.1
	Minimum	-	-	-	-	-	12.4	14.4	14.6	11.8	10.0	6.1	3.8
Lufttemperatur (°C)	Monatsmittel	-	-	-	-	-	19.6	18.5	18.8	12.5	11.1	4.1	0.3
	Maximum	-	-	-	-	-	30.7	30.5	32.5	24.1	20.5	13.6	10.6
	Minimum	-	-	-	-	-	7.7	11.2	9.9	5.6	1.2	-1.6	-5.5



1. Januar – 7. Juni 2017: Messstation war nicht in Betrieb

Temperaturen Mühledorf 2017



Darstellung der Tagesmittelwerte; Lücken = keine Daten; 1. Januar – 7. Juni 2017: Messstation war nicht in Betrieb

Bodenmesswerte

Mühledorf Wald

Saure Braunerde

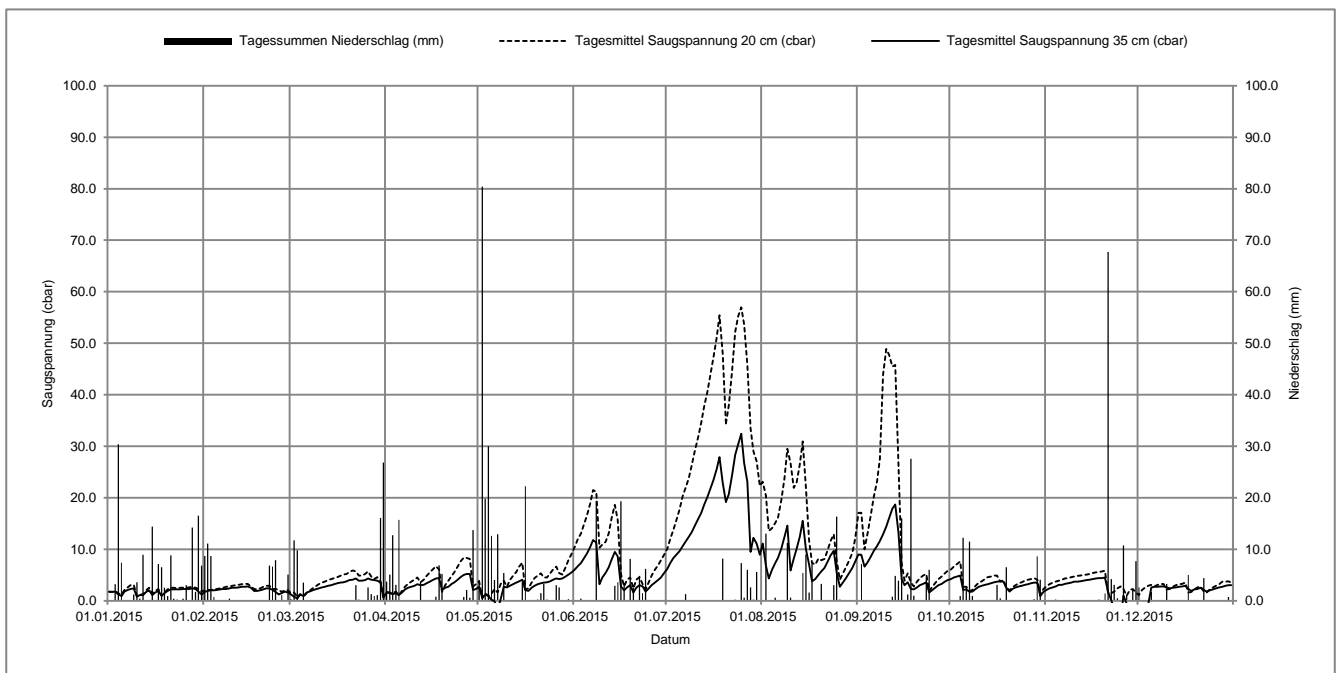
Koordinaten 604033 / 220559, 633 müM

mittelschwerer Boden

2015 Tag	Jan		Feb		März		April		Mai		Juni		Juli		Aug		Sept		Okt		Nov		Dez	
	SS35 (cbar)	N (mm)	SS35 (cbar)	N (mm)	SS35 (cbar)	N (mm)	SS35 (cbar)	N (mm)	SS35 (cbar)	N (mm)	SS35 (cbar)	N (mm)	SS35 (cbar)	N (mm)	SS35 (cbar)	N (mm)	SS35 (cbar)	N (mm)	SS35 (cbar)	N (mm)	SS35 (cbar)	N (mm)	SS35 (cbar)	N (mm)
1	1.8	0.0	1.7	8.7	1.2	0.3	1.6	3.7	2.7	4.0	6.1	0.0	6.2	0.0	11.1	0.0	9.0	0.0	4.2	0.0	2.1	0.0	-2.7	2.6
2	1.7	0.0	1.9	11.1	0.8	11.7	1.5	5.1	0.5	80.4	6.7	0.0	7.3	0.0	6.8	13.0	8.9	7.1	4.5	0.0	2.4	0.0	-2.2	0.1
3	1.8	3.2	2.0	8.7	0.4	9.8	1.3	12.7	1.2	19.8	7.3	0.4	8.3	0.0	4.3	0.0	6.6	0.0	4.7	0.0	2.6	0.1	-3.0	0.0
4	1.2	30.4	2.0	0.7	1.2	0.0	1.5	3.1	0.9	30.0	8.2	0.0	8.9	0.0	6.0	0.0	7.5	0.0	4.9	0.9	2.8	0.2	-0.8	0.0
5	0.9	7.4	2.1	0.0	0.9	3.5	1.1	15.7	0.2	12.6	9.2	0.0	9.6	0.0	7.3	0.6	8.5	0.0	2.1	12.2	3.1	0.0	2.6	1.7
6	1.8	0.0	2.2	0.0	1.6	0.0	1.6	0.1	-0.1	4.0	10.4	0.1	10.6	0.0	8.4	0.0	9.7	0.1	2.2	2.5	3.1	0.0	2.7	0.0
7	2.1	0.0	2.3	0.0	1.8	0.0	2.2	0.0	-1.7	12.9	11.8	0.0	11.5	1.3	10.1	0.0	10.6	0.0	1.7	11.5	3.3	0.0	2.7	0.1
8	2.3	0.1	2.3	0.0	2.0	0.0	2.5	0.0	0.2	0.0	11.3	19.4	12.4	0.0	12.4	0.0	11.6	0.0	1.8	0.9	3.4	0.0	2.8	0.1
9	2.4	1.2	2.4	0.4	2.2	0.0	2.7	0.0	2.7	5.4	3.2	0.1	13.4	0.0	14.6	11.2	12.9	0.0	2.3	0.0	3.5	0.0	2.8	0.1
10	0.8	3.6	2.5	0.0	2.4	0.0	2.9	0.0	2.6	0.0	4.5	0.0	14.6	0.0	5.9	0.6	14.4	0.0	2.7	0.0	3.7	0.0	2.6	3.3
11	1.1	0.4	2.5	0.0	2.6	0.0	3.2	0.0	2.9	0.0	5.4	0.0	15.8	0.0	8.2	0.0	16.1	0.0	2.9	0.0	3.7	0.0	2.4	0.1
12	1.1	8.9	2.6	0.0	2.7	0.0	3.0	3.7	3.2	0.0	6.5	0.0	17.1	0.0	10.1	0.0	17.9	0.8	3.1	0.0	3.8	0.0	2.5	0.0
13	1.7	0.0	2.7	0.0	2.9	0.0	3.1	0.0	3.5	0.0	8.0	0.0	18.6	0.0	12.5	0.0	18.7	4.8	3.2	0.0	3.9	0.1	2.6	0.0
14	2.0	0.0	2.7	0.0	3.0	0.0	3.4	0.0	3.8	0.0	9.5	2.9	20.1	0.0	15.5	5.4	13.3	3.9	3.4	0.0	4.0	0.0	2.7	0.0
15	1.1	14.4	2.8	0.0	3.2	0.0	3.7	0.0	4.1	3.6	8.6	3.6	21.7	0.0	10.0	9.0	4.2	16.0	3.6	0.0	4.1	0.0	2.8	0.0
16	1.6	0.0	2.5	0.0	3.4	0.0	4.0	0.0	2.1	22.2	2.8	19.3	23.4	0.0	7.0	1.6	3.0	0.0	3.7	3.1	4.2	0.0	2.9	0.1
17	1.9	7.1	1.9	0.0	3.5	0.0	4.3	0.8	1.9	0.0	2.0	3.0	25.5	0.0	3.8	7.5	3.6	1.2	3.8	0.5	4.3	0.0	2.3	5.0
18	1.0	6.5	1.9	0.0	3.6	0.0	4.4	6.9	2.5	0.0	2.6	0.0	27.9	0.0	4.2	0.0	2.3	27.6	3.7	0.0	4.4	0.2	1.9	0.0
19	1.5	2.5	2.0	0.0	3.8	0.0	2.1	5.2	2.9	0.0	3.0	8.1	22.9	8.2	5.0	0.0	2.2	1.0	2.5	6.5	4.4	0.0	2.2	0.1
20	1.9	0.9	2.2	0.0	4.0	0.0	2.5	0.0	3.2	0.2	1.6	2.5	19.2	0.0	5.7	3.3	2.6	0.0	1.8	0.0	4.5	1.4	2.3	0.0
21	2.2	8.8	2.4	0.0	4.1	0.0	2.7	0.0	3.4	1.5	2.5	0.0	20.7	0.0	6.4	0.0	3.0	0.0	2.3	0.0	1.7	67.7	2.5	0.0
22	2.2	0.4	2.4	6.8	4.3	3.0	3.2	0.0	3.5	3.3	3.0	4.8	24.3	0.0	7.5	0.0	3.3	0.0	2.6	0.0	0.1	4.2	2.1	4.4
23	2.2	0.2	2.1	6.6	3.9	0.2	3.6	0.0	3.6	0.2	2.8	1.5	28.3	0.2	8.8	0.0	3.6	4.5	2.8	0.0	-1.7	3.1	1.8	0.0
24	2.2	0.1	1.7	7.9	3.9	0.0	4.1	0.0	3.8	0.0	1.8	6.2	30.3	0.1	9.7	3.0	1.6	6.0	2.9	0.0	-3.8	0.5	2.0	0.0
25	2.3	0.4	1.2	0.1	4.0	0.0	4.6	0.0	4.1	0.0	2.4	0.0	32.4	7.3	5.5	16.3	2.1	0.0	3.1	0.0	-3.7	0.0	2.2	0.0
26	2.3	3.0	1.5	1.1	4.3	2.6	5.0	0.7	4.3	3.0	3.0	0.0	26.7	0.6	2.7	0.2	2.6	0.0	3.2	0.0	1.0	10.7	2.4	0.0
27	2.3	0.0	1.8	0.0	4.1	1.3	5.2	2.1	4.2	2.6	3.5	0.0	23.1	6.0	3.6	0.0	3.0	0.0	3.4	0.0	-0.6	1.0	2.6	0.0
28	2.4	14.2	1.6	5.1	4.0	0.9	5.2	0.6	4.3	0.0	4.0	0.0	9.5	2.6	4.4	0.0	3.3	0.0	3.5	0.3	-0.8	0.0	2.7	0.0
29	2.3	1.7			3.9	1.1	2.1	13.7	4.7	0.0	4.5	0.0	12.2	0.2	5.4	0.0	3.7	0.0	3.5	8.6	-1.3	2.2	2.9	0.0
30	1.8	16.5			3.5	16.1	2.3	0.0	5.1	0.3	5.4	0.0	11.1	5.6	6.4	0.0	4.0	0.0	0.9	4.1	-2.4	7.7	3.0	0.7
31	1.2	6.8			0.6	26.8			5.5	0.0			8.9	0.0	7.6	0.0			1.7	0.0			3.0	0.1

SS35 = Tagesmittelwerte Saugspannung (cbar) in 35 cm Tiefe; N = Tagessummen Niederschlag (mm)

		Jan	Feb	März	April	Mai	Juni	Juli	Aug	Sept	Okt	Nov	Dez
Niederschlag (mm)	Monatssumme	147.4	48.8	80.7	74.0	202.1	71.9	32.1	71.7	73.0	51.1	101.7	18.6
Saugspannung 20 cm (cbar)	Monatssumme	2.1	2.5	3.7	4.4	4.5	9.8	35.0	14.8	15.4	3.8	3.7	2.8
	Maximum	3.2	3.5	6.1	9.5	11.3	30.2	61.5	34.4	52.6	8.5	5.9	4.2
	Minimum	0.2	1.0	0.1	0.2	0.2	0.4	10.0	2.8	0.4	0.3	0.2	0.7
Saugspannung 35 cm (cbar)	Monatssumme	1.8	2.1	2.8	3.1	2.9	5.4	17.7	7.6	7.0	2.9	1.8	2.1
	Maximum	4.4	2.9	4.4	6.0	6.6	14.4	35.9	19.2	20.6	6.2	4.8	3.1
	Minimum	-0.2	0.7	-0.1	0.1	-4.5	0.1	6.3	1.0	0.3	0.4	-4.9	-3.7
Bodentemperatur 20 cm (°C)	Monatssumme	2.5	1.6	4.1	8.7	13.3	16.2	20.2	18.9	14.7	10.4	7.8	4.5
	Maximum	4.3	1.8	7.8	12.8	16.8	18.3	22.8	21.8	19.4	13.1	9.8	6.1
	Minimum	1.7	1.3	1.2	4.6	10.3	13.7	16.8	16.1	11.1	7.8	4.2	2.7
Bodentemperatur 35 cm (°C)	Monatssumme	2.9	1.9	3.9	8.2	12.7	15.4	19.4	18.6	15.0	10.7	8.2	4.9
	Maximum	4.0	2.2	7.0	11.3	14.8	16.8	21.2	20.6	18.9	12.8	9.8	6.1
	Minimum	2.2	1.6	1.5	5.2	10.3	13.3	16.4	16.6	11.9	8.7	5.0	3.5
Lufttemperatur (°C)	Monatssumme	0.8	-0.5	6.1	10.0	13.5	18.0	22.3	19.9	12.6	8.4	6.7	3.4
	Maximum	12.8	7.3	16.5	23.3	28.9	31.1	37.0	36.2	24.2	17.5	16.4	9.5
	Minimum	-5.8	-7.9	-2.1	-1.7	4.1	8.7	10.1	9.1	4.8	1.7	-4.7	-3.8

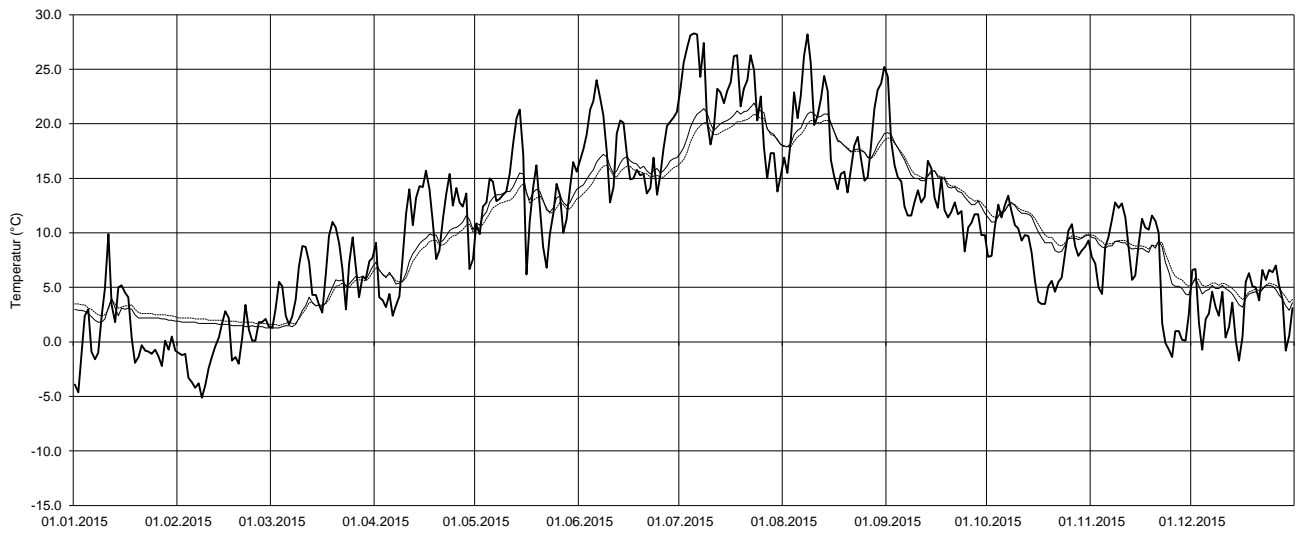


Temperaturen Mühledorf 2015

Lufttemperatur

Bodentemperatur 20 cm

Bodentemperatur 35 cm



Darstellung der Tagesmittelwerte; Lücken = keine Daten

Bodenmesswerte

Mühledorf Wald

Saure Braunerde

Koordinaten 604033 / 220559, 633 müM

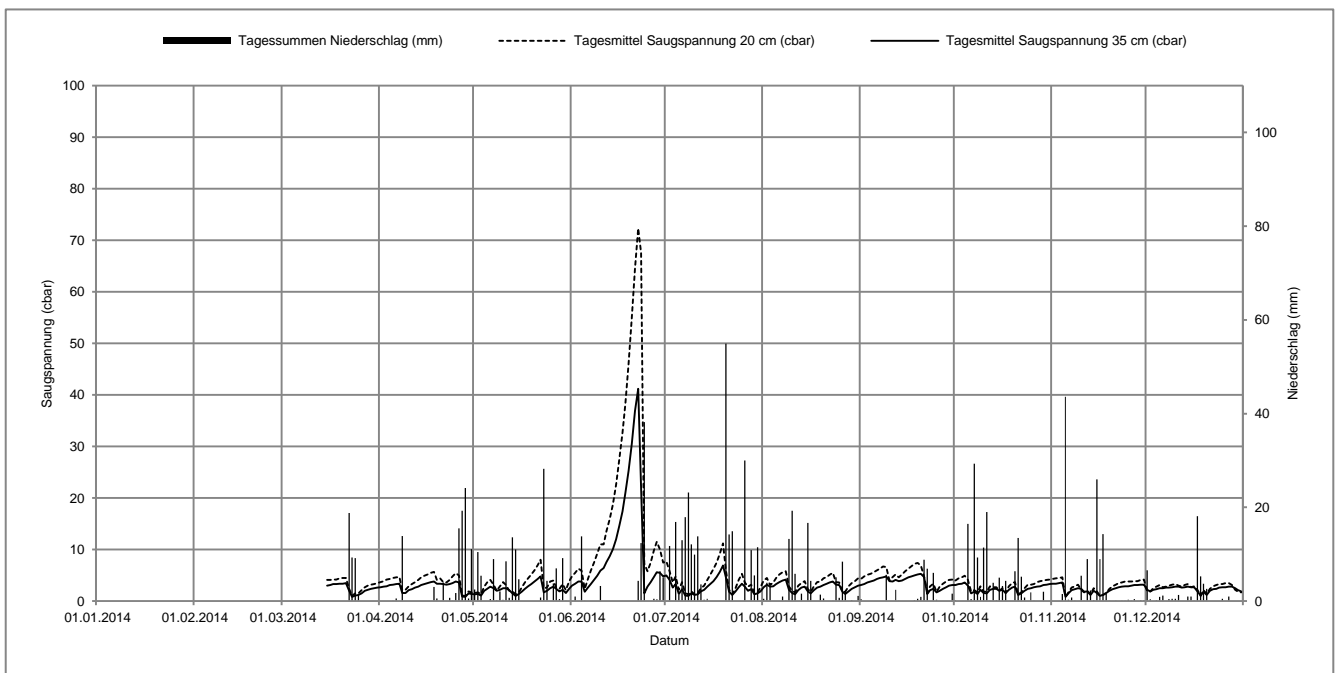
mittelschwerer Boden

2014 Tag	Jan		Feb		März		April		Mai		Juni		Juli		Aug		Sept		Okt		Nov		Dez	
	SS35 (cbar)	N (mm)	SS35 (cbar)	N (mm)	SS35 (cbar)	N (mm)	SS35 (cbar)	N (mm)	SS35 (cbar)	N (mm)	SS35 (cbar)	N (mm)	SS35 (cbar)	N (mm)	SS35 (cbar)	N (mm)	SS35 (cbar)	N (mm)	SS35 (cbar)	N (mm)	SS35 (cbar)	N (mm)	SS35 (cbar)	N (mm)
1	-	-	-	-	-	-	2.7	0.0	1.3	2.5	3.0	0.0	5.0	0.0	2.7	0.5	3.1	0.4	3.1	0.2	3.4	0.0	2.2	6.6
2	-	-	-	-	-	-	2.8	0.0	1.4	10.5	3.4	1.0	4.1	11.8	3.2	3.9	3.3	0.0	3.3	0.0	3.4	0.0	1.9	0.4
3	-	-	-	-	-	-	2.9	0.0	1.1	5.4	3.8	0.0	2.6	0.0	2.8	3.3	3.6	0.0	3.4	0.0	3.5	0.0	2.2	0.0
4	-	-	-	-	-	-	3.1	0.0	2.0	0.0	3.8	13.8	3.3	16.9	2.9	0.0	3.8	0.0	3.6	0.0	3.6	1.5	2.3	0.2
5	-	-	-	-	-	-	3.2	0.1	2.4	0.0	1.8	0.1	1.4	1.4	3.3	0.0	4.0	0.0	3.0	16.5	0.8	43.6	2.5	0.9
6	-	-	-	-	-	-	3.3	0.6	2.8	0.4	2.6	0.0	2.3	13.0	3.7	0.0	4.3	0.0	1.5	0.4	1.5	0.3	2.5	1.2
7	-	-	-	-	-	-	3.4	0.0	2.5	9.0	3.3	0.0	1.1	17.9	4.0	1.0	4.5	0.0	1.8	29.3	2.1	0.8	2.6	0.0
8	-	-	-	-	-	-	1.6	13.9	2.0	0.2	4.1	0.0	1.0	23.2	4.2	0.1	4.6	0.0	1.4	9.3	2.3	0.1	2.6	0.4
9	-	-	-	-	-	-	1.6	0.0	2.2	2.1	4.9	0.0	1.5	12.1	2.2	13.3	4.8	5.6	2.2	0.9	2.5	0.0	2.7	0.5
10	-	-	-	-	-	-	2.1	0.0	2.5	0.3	5.9	3.2	1.2	9.9	1.6	19.3	3.9	0.0	1.6	11.4	2.4	5.4	2.8	0.5
11	-	-	-	-	-	-	2.3	0.0	2.5	8.5	6.4	0.0	1.3	13.8	1.3	5.8	3.8	0.0	1.5	19.0	1.8	0.1	2.8	1.3
12	-	-	-	-	-	-	2.6	0.0	2.1	0.7	7.6	0.0	1.9	3.6	2.1	0.0	4.1	2.4	2.2	0.1	1.9	9.0	2.6	0.0
13	-	-	-	-	-	-	2.8	0.0	1.5	13.6	8.7	0.0	2.2	0.3	2.6	1.6	3.9	0.1	2.4	3.9	1.2	2.3	2.7	0.0
14	-	-	-	-	-	-	3.1	0.0	1.0	11.0	10.1	0.0	2.8	0.5	2.8	0.0	4.0	0.0	2.4	0.2	2.0	0.2	2.8	1.0
15	-	-	-	-	3.0	0.0	3.3	0.0	1.4	4.7	12.0	0.0	3.3	0.0	1.9	16.7	4.3	0.0	2.0	5.0	1.6	26.0	2.7	1.0
16	-	-	-	-	3.1	0.0	3.5	0.0	1.8	0.0	14.6	0.0	3.9	0.0	1.5	4.3	4.6	0.0	2.2	3.2	1.0	9.0	2.7	0.1
17	-	-	-	-	3.3	0.0	3.7	0.0	2.4	0.0	17.4	0.0	4.7	0.0	2.1	0.0	4.8	0.0	1.6	4.3	1.2	14.3	1.9	18.1
18	-	-	-	-	3.3	0.0	3.8	3.0	2.9	0.0	21.0	0.0	5.7	0.0	2.6	0.0	5.0	0.2	2.2	0.0	1.6	1.6	1.1	5.3
19	-	-	-	-	3.4	0.0	3.4	0.6	3.3	0.0	25.3	0.0	6.9	0.0	2.8	1.4	5.2	0.5	2.6	0.0	2.0	0.1	1.8	3.7
20	-	-	-	-	3.4	0.0	3.4	0.0	3.8	0.0	30.5	0.0	4.6	54.9	3.1	0.6	5.3	0.9	2.8	6.4	2.3	0.0	1.2	2.6
21	-	-	-	-	3.5	0.0	3.3	4.0	4.3	0.0	36.9	0.0	1.8	14.2	3.4	0.0	4.7	8.8	1.2	13.5	2.5	0.1	2.0	0.0
22	-	-	-	-	2.0	18.8	3.2	0.0	4.8	0.8	41.2	4.3	1.2	14.9	3.6	0.0	1.4	6.9	1.5	5.2	2.7	0.0	2.3	0.0
23	-	-	-	-	0.8	9.3	3.3	0.7	1.7	28.2	22.0	12.4	1.9	0.0	3.8	0.1	2.1	0.0	2.0	0.8	2.8	0.1	2.4	0.0
24	-	-	-	-	1.1	9.2	3.5	0.1	2.0	4.3	1.5	38.2	2.7	0.0	3.2	5.1	2.4	6.0	2.4	0.0	2.9	0.1	2.6	0.0
25	-	-	-	-	1.2	1.3	3.8	1.7	2.5	0.0	2.8	0.0	3.4	0.0	3.1	0.7	1.7	0.3	2.5	1.9	2.9	0.3	2.7	0.5
26	-	-	-	-	1.5	0.0	3.6	15.5	2.8	3.8	3.7	0.0	2.8	30.0	1.8	8.4	2.0	0.0	2.7	0.1	3.0	0.1	2.7	0.0
27	-	-	-	-	2.0	0.0	0.9	19.3	2.4	7.0	4.7	0.5	2.0	0.0	1.4	2.1	2.4	0.0	2.8	0.0	3.1	0.4	2.8	1.0
28	-	-	-	-	2.2	0.0	0.8	24.1	1.9	0.4	5.6	0.4	2.3	10.9	1.9	0.0	2.7	0.0	2.9	0.0	3.1	0.0	2.8	0.0
29	-	-	-	-	2.4	0.0	1.5	0.6	2.2	9.2	5.5	6.4	1.3	5.5	2.4	0.2	3.0	0.0	3.1	2.0	3.2	0.2	2.5	0.0
30	-	-	-	-	2.5	0.0	1.4	11.1	1.6	0.1	4.8	5.1	1.5	11.5	2.7	0.0	3.1	1.6	3.2	0.0	3.2	0.2	2.1	0.0
31	-	-	-	-	2.6	0.0			2.4	0.0			1.9	0.0	3.0	1.1			3.3	0.0			1.9	0.0

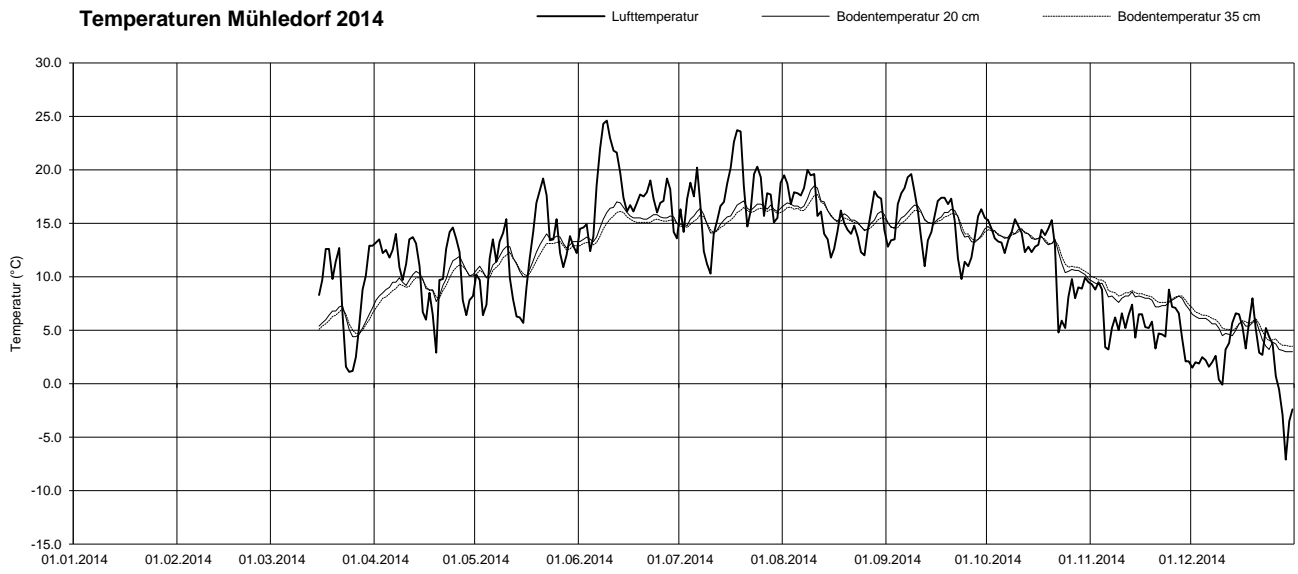
SS35 = Tagesmittelwerte Saugspannung (cbar) in 35 cm Tiefe; N = Tagessummen Niederschlag (mm); ab 15.03.2014 in Betrieb

		Jan	Feb	März	April	Mai	Juni	Juli	Aug	Sept	Okt	Nov	Dez
Niederschlag (mm)	Monatssumme	-	-	(38.6)	95.3	122.7	85.4	266.3	89.5	33.7	133.6	115.8	45.3
Saugspannung 20 cm (cbar)	Monatssumme	-	-	(3.2)	3.9	3.3	20.4	3.9	3.6	4.9	3.0	2.9	2.7
	Maximum	-	-	(4.8)	5.8	8.8	79.6	13.3	7.5	8.1	5.4	4.7	4.2
	Minimum	-	-	(0.1)	0.3	0.4	1.1	0.5	0.0	0.7	0.4	0.2	0.1
Saugspannung 35 cm (cbar)	Monatssumme	-	-	(2.4)	2.8	2.3	10.6	2.7	2.7	3.7	2.4	2.4	2.4
	Maximum	-	-	(3.7)	4.7	5.5	50.5	8.3	5.7	6.5	4.4	3.6	3.3
	Minimum	-	-	(0.1)	-0.1	0.1	0.1	0.2	-0.1	0.6	0.2	0.0	0.1
Bodentemperatur 20 cm (°C)	Monatssumme	-	-	(5.9)	9.7	12.1	15.3	15.8	16.1	15.1	12.8	8.1	4.8
	Maximum	-	-	(8.0)	12.6	14.6	17.6	17.4	19.5	17.4	15.1	9.8	6.9
	Minimum	-	-	(3.9)	7.0	9.2	12.7	13.9	13.8	12.7	9.5	6.8	3.0
Bodentemperatur 35 cm (°C)	Monatssumme	-	-	(5.8)	9.2	11.7	14.8	15.5	15.8	15.0	13.0	8.4	5.3
	Maximum	-	-	(7.2)	11.4	13.5	16.3	16.6	18.0	16.5	14.6	10.2	7.3
	Minimum	-	-	(4.5)	6.8	9.6	12.7	14.0	14.2	13.2	10.2	7.3	3.5
Lufttemperatur (°C)	Monatssumme	-	-	(8.2)	10.7	12.0	17.8	17.3	15.9	15.0	11.9	5.8	2.4
	Maximum	-	-	(19.6)	20.8	25.4	32.9	30.7	26.8	26.1	19.9	12.3	11.1
	Minimum	-	-	(-2.6)	0.1	3.1	8.1	8.5	8.3	4.5	3.0	1.3	-11.2

Station am 15.03.2014 in Betrieb genommen; () = Datengrundlage unvollständig



Temperaturen Mühledorf 2014



Darstellung der Tagesmittelwerte; Lücken = keine Daten