

# Niederschlag

# Ried - Erschwil

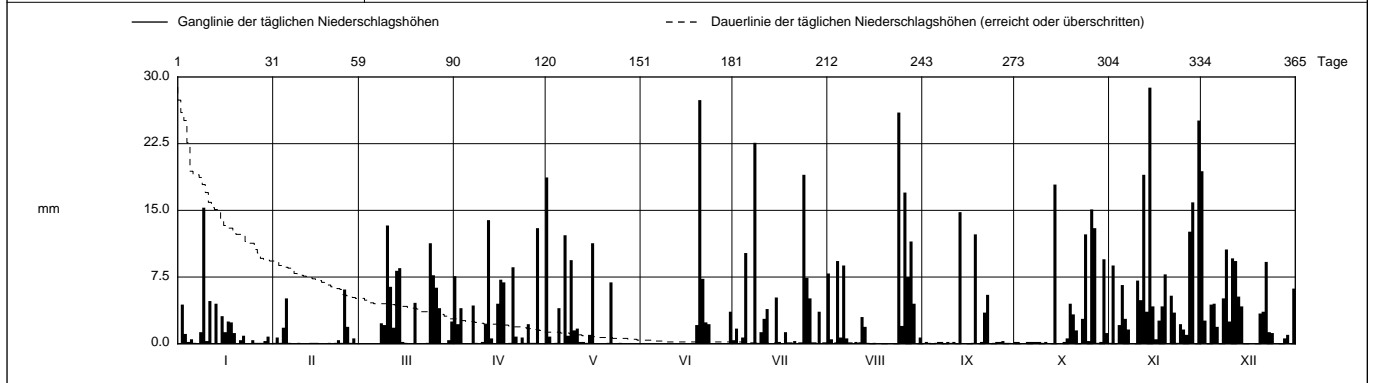
SO 608/247/002

Koordinaten 2 608 930 / 1 247 760

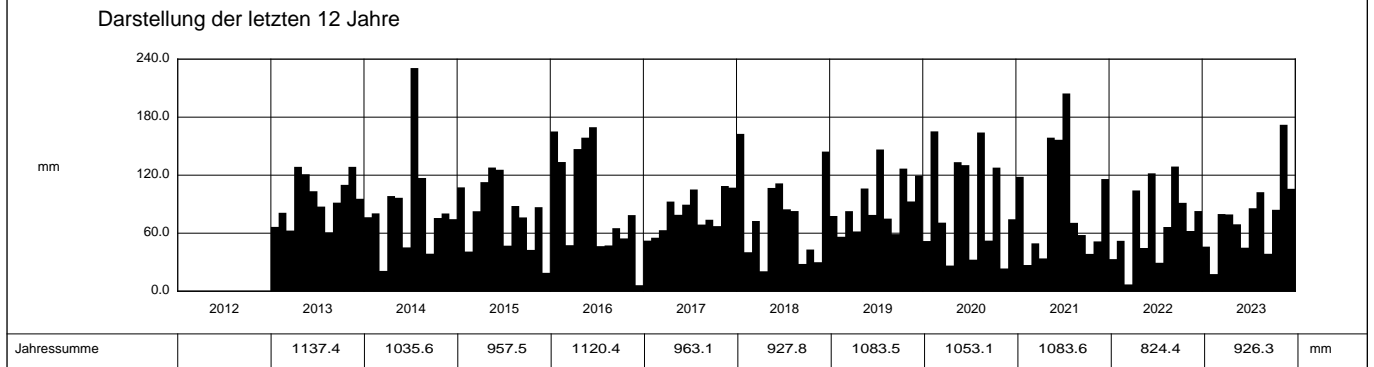
Stations Höhe 583.0 mÜM

Fläche - km2

2023		Jan	Feb	Mar	Apr	Mai	Jun	Jul	Aug	Sep	Okt	Nov	Dez		
1		0	0.1	0	7.6	18.7 +	0	0.4	7.9	0	0.2	0.1	19.4 +	1	
2		4.4	0.7	0	2.2	0.8	0	1.7	0.5	0.2	0.2	8.8	2.6	2	
3		1.1	0.1	0	4.0	0	0	0	0.1	0	0	0	0	3	
4		0.2	1.8	0	0	0.1	0	0.7	9.3	0	0	2.1	4.4	4	
5		0.5	5.1	0	0	4.0	0	10.2	0.7	0.1	0.2	6.6	4.5	5	
6	Tägliche Niederschlags-höhen	0.1	0.1	0	0	0	0	0	8.8	0.2	0.2	2.8	1.9	6	
7		0	0	0	4.3	12.2	0	0.6	0.2	0.2	0.2	1.6	0	7	
8		1.3	0	2.3	0.1	0.9	0	22.6 +	0	0	0.2	0	5.1	8	
9		15.3 +	0.1	2.1	0	9.4	0	0.1	0	0.2	0.2	0	10.6	9	
10		0.3	0	13.3 +	0.2	1.5	0	1.3	0.2	0.1	0.1	7.1	2.5	10	
11		4.8	0	6.4	2.2	1.7	0	2.8	0.1	0.2	0.2	4.9	9.6	11	
12		0	0	1.8	13.9 +	0.2	0	3.9	3.0	0	0	19.0	9.3	12	
13		4.5	0.1	8.2	0.6	0.2	0	0	1.9	14.8 +	0	3.6	5.3	13	
14		0	0.1	8.5	0	0.1	0	0	0.1	0	17.9 +	28.8 +	4.2	14	
15		3.1	0.1	0.2	4.5	1.0	0	5.2	0	0	0	4.2	0	15	
16	mm	1.3	0	0.1	7.2	11.3	0	0.2	0.1	0	0	0.5	0	16	
17		2.5	0	0	6.9	0	0	0	0	0.1	0.2	2.6	0	17	
18		2.4	0	0	0	0	0	1.3	0	12.3	0.6	4.2	0	18	
19		1.2	0.1	4.6	0.1	0	2.1	0	0	0	4.5	7.8	0	19	
20		0	0	0	8.6	0	27.4 +	0	0	0.2	3.3	0	3.4	20	
21		0.4	0.1	0	0.8	0.1	7.3	0.3	0	3.5	1.5	5.4	3.6	21	
22		0.9	0.4	0	0	6.9	2.4	0	0	5.5	0	3.5	9.2	22	
23		0	0.1	0.1	0.7	0	2.2	0	0	0	2.8	0.1	1.3	23	
24	+ Maximum	0	6.1 +	11.3	0.1	0	0	19.0	26.0 +	0.1	12.3	2.2	1.2	24	
25		0.4	1.9	7.7	2.2	0.1	0	7.4	2.0	0.2	0.3	1.6	0	25	
26		0.1	0.1	6.3	0.1	0	0	5.1	17.0	0.2	15.1	1.0	0	26	
27		0.1	0.6	4.0	0.1	0	0	0	7.5	0.3	13.0	12.6	0	27	
28		0.1	0	0	13.0	0	0	0	11.5	0.1	0.1	15.9	0.6	28	
29		0.3	0	0	0	0	0	3.6	4.5	0.1	0.2	0	1.0	29	
30		0.8	0	0.4	0	0	3.6	0	0	0	9.5	25.1	0	30	
31		0	0	2.5	0	0	0	0	0.7	0	1.2	0	6.2	31	
Monatssumme		46.1	17.7 -	79.8	79.4	69.2	45.0	85.8	102.4	38.7	84.2	172.1 +	105.9	mm	
Niederschlagstage		11	4 -	13	12	9	6	12	11	4 -	10	22 +	19	Tage	
Niederschlagstage grösser oder gleich als [mm]		227 >= 0.1		62 >= 5			28 >= 10		5 >= 20		>= 50		>= 100		Tage
Jahreswerte		Gesamtniederschlag 926.3 mm				Niederschlagstage 133 Tage									



Periode	1999 - 2023 (ohne: 2012) (24 Jahre)												
Mit Monatssumme	64.7	58.3 -	66.6	79.9	106.9	96.6	109.5 +	95.9	75.3	78.8	72.3	80.1	mm
Max Tagessumme	28.8	21.4 -	40.8	52.2	63.4	43.9	77.2 +	67.1	54.9	35.8	46.4	34.3	mm
Jahr	2021	2013	2006	2006	1999	2007	2009	2007	2008	2004	2015	2004	
Periode	Max Gesamtniederschlag 1299.4 (2002)				Min Gesamtniederschlag 617.2 (2003)								mm



Jahressumme	2012	2013	2014	2015	2016	2017	2018	2019	2020	2021	2022	2023	mm
		1137.4	1035.6	957.5	1120.4	963.1	927.8	1083.5	1053.1	1083.6	824.4	926.3	mm

# Niederschlag

# Ried - Erschwil

SO 608/247/002

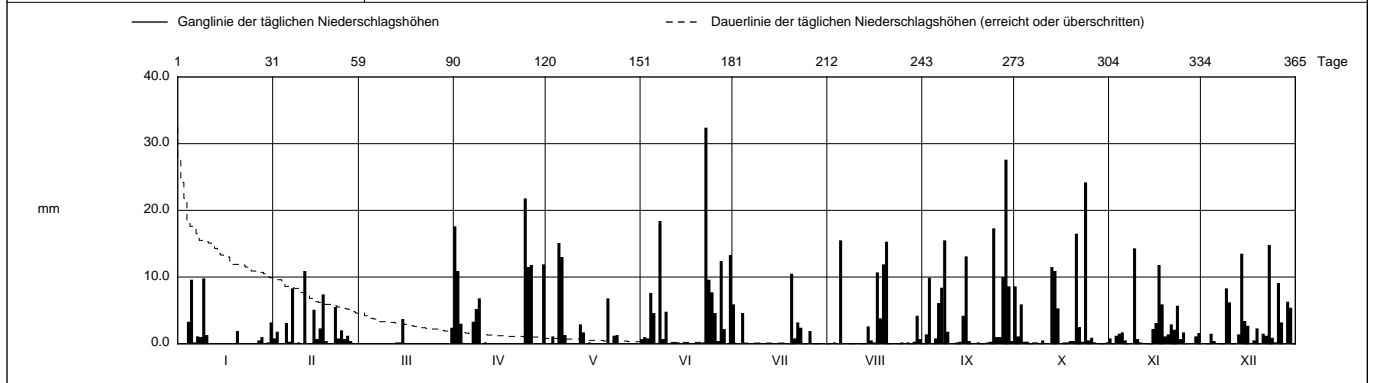
Koordinaten 2 608 930 / 1 247 760

Stations Höhe 583.0 müM

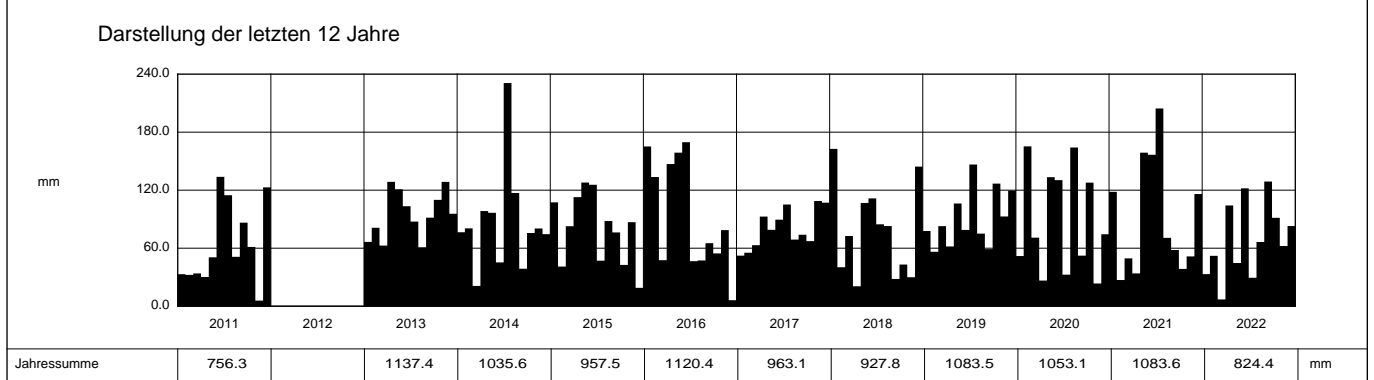
Fläche - km2

2022		Jan	Feb	Mar	Apr	Mai	Jun	Jul	Aug	Sep	Okt	Nov	Dez	
1		0	0.8	0	17.6	0	0.7	5.9	0	0	8.6	0.8	0	1
2		0	1.8	0	10.9	0	1.0	0	0	1.4	1.1	0	0	2
3		0	0	0.1	3.0	1.1	0.8	0	0.2	9.9	5.9	1.2	0	3
4		3.3	0.1	0	0.1	0	7.6	4.6	0	0	0.3	1.5	1.5	4
5		9.6	3.1	0	0	15.1 +	4.6	0	15.5 +	0.8	0.3	1.7	0.4	5
6	Tägliche Niederschlags-höhen	0.2	0.3	0	0	13.0	0	0	0	6.1	0	0.5	0	6
7		1.1	8.3	0	3.3	1.3	18.4	0	0	8.4	0.2	0.1	0	7
8		1.0	0	0	5.2	0	0.7	0	0	15.5	0.2	0	0	8
9		9.8 +	0.2	0.1	6.8	0	4.8	0	0	1.8	0	14.3 +	8.3	9
10		1.3	0	0.1	0	0.1	0	0	0	0	0.5	0.7	6.2	10
11		0	10.9 +	0.1	0.2	0	0	0	0	0.1	0	0.2	0	11
12		0	0	0	0	2.9	0.2	0	0	0.2	0	0	0	12
13		0	0	0.2	0	1.7	0.2	0	0	0.3	11.5	0	1.4	13
14		0	5.1	0.2	0	0	0	0	2.6	4.2	10.9	0	13.5	14
15		0	0.7	3.7 +	0	0.2	0.1	0	0.5	13.1	5.3	2.2	3.4	15
16	mm	0	2.3	0.1	0	0	0	0	0.2	0.4	0	3.1	2.7	16
17		0.1	7.4	0	0	0	0	0	10.7	0	0.2	11.8	0.1	17
18		0	0.4	0	0	0	0	0	3.8	0	0.2	5.9	0.5	18
19		0	0	0	0	0	0	0	11.9	0.2	0.4	1.1	2.3	19
20		1.9	0.1	0	0	0	0	10.5 +	15.3	0	0.4	1.4	0	20
21		0	5.5	0	0	6.8	0.2	0.8	0	0.1	16.5	2.9	1.5	21
22		0	0.8	0	0	0	32.4 +	3.2	0	0.2	2.5	2.1	1.2	22
23		0	2.0	0	0.1	1.2	9.6	2.4	0.1	0.3	0.3	5.7	14.8 +	23
24	+ Maximum	0	0.7	0	21.8 +	1.3	7.7	0	0	17.3	24.2 +	0.7	0.9	24
25		0	1.2	0	11.5	0	4.6	0	0.2	1.0	0.5	1.7	0.2	25
26		0	0.4	0	11.8	0	0.4	1.9	0	1.0	0.9	0	9.1	26
27		0.5	0	0	0	0	12.4	0	0.2	10.0	0.2	0	3.2	27
28		1.0	0	0	0	0	2.2	0.1	0	27.6 +	0	0	0	28
29		0	0	0	0	0	0	0	0.3	8.6	0.1	1.1	6.3	29
30		0.2	0	0	11.9	0	13.3	0	4.2	0.4	0	1.6	5.4	30
31		3.2		2.4		0		0	0.7		0.2		0	31

Monatssumme	33.2	52.1	7.0 -	104.2	44.7	121.9	29.4	66.4	128.9 +	91.4	62.3	82.9	mm
Niederschlagstage	9	10	2 -	10	9	12	6	7	14	9	16 +	15	Tage
Niederschlagstage grösser oder gleich als [mm]			199 >= 0.1	58 >= 5	31 >= 10	4 >= 20			>= 50			>= 100	Tage
Jahreswerte	Gesamtniederschlag 824.4 mm				Niederschlagstage 119 Tage								



Periode	1999 - 2022 (ohne: 2012) (23 Jahre)												
Mit Monatssumme	65.6	60.1 -	66.0	79.9	108.6	98.8	110.5 +	95.7	76.9	78.6	68.0	78.9	mm
Max Tagessumme	28.8	21.4 -	40.8	52.2	63.4	43.9	77.2 +	67.1	54.9	35.8	46.4	34.3	mm
Jahr	2021	2013	2006	2006	1999	2007	2009	2007	2008	2004	2015	2004	
Periode	Max Gesamtniederschlag 1299.4 (2002)						Min Gesamtniederschlag 617.2 (2003)						mm



Jahressumme	756.3		1137.4	1035.6	957.5	1120.4	963.1	927.8	1083.5	1053.1	1083.6	824.4	mm
-------------	-------	--	--------	--------	-------	--------	-------	-------	--------	--------	--------	-------	----

# Niederschlag

# Ried - Erschwil

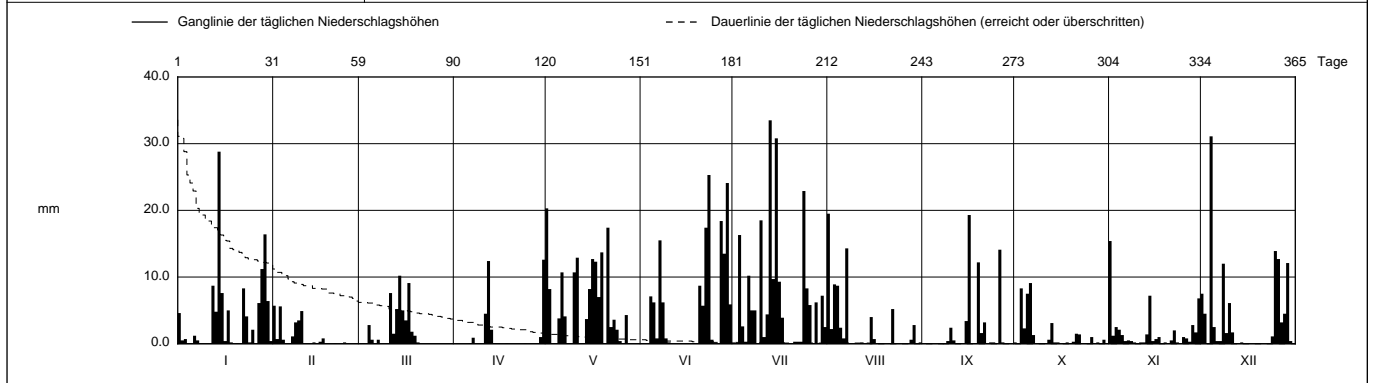
SO 608/247/002

Koordinaten 2 608 930 / 1 247 760

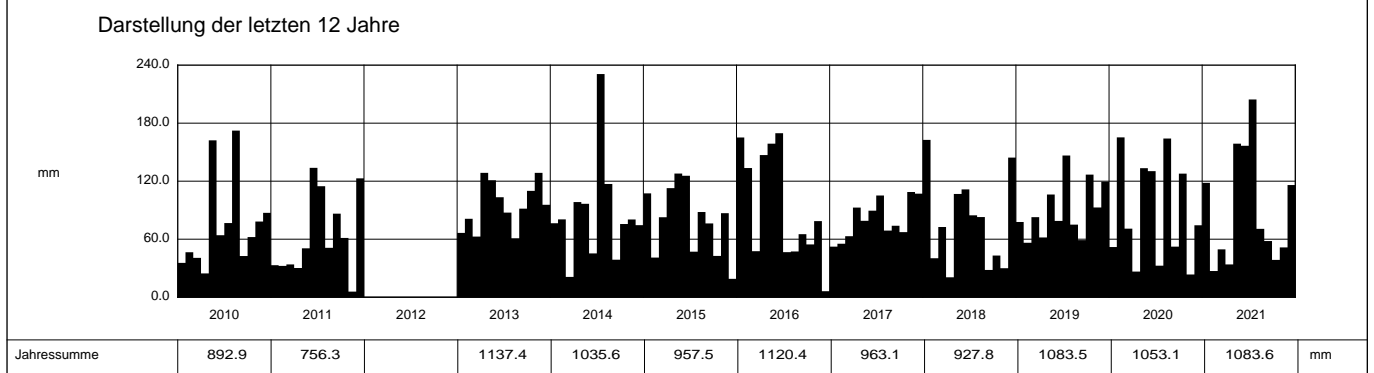
Stations Höhe 583.0 müM

Fläche - km2

2021	Jan	Feb	März	April	Mai	Juni	Juli	Aug	Sept	Okt	Nov	Dez	
1	4.6	5.7 +	0.1	0	20.3 +	0	0.2	19.5 +	0	0.2	15.4 +	7.5	1
2	0.5	0.7	0.1	0	8.2	0	0	2.2	0.1	0	1.2	4.5	2
3	0.7	5.6	0	0	0	0	16.3	8.9	0	8.3	2.5	0	3
4	0	0.6	2.8	0	0	7.1	2.6	8.7	0	2.3	2.1	31.1 +	4
5	0	0	0.6	0	3.8	6.2	0.3	2.4	0	7.5	1.3	2.5	5
<b>Tägliche Niederschlags-höhen</b>													
6	1.2	0	0	0.1	10.7	0.8	10.2	0.8	0	9.1 +	0.4	0.4	6
7	0.5	1.1	0.6	0.9	4.1	15.5	5.0	14.3	0	1.3	0.5	0.4	7
8	0	3.2	0	0	0.1	6.2	5.0	0	0.1	0	0.4	12.0	8
9	0	3.5	0	0	0	0.8	0	0	0.4	0	0.2	1.6	9
10	0	4.9	0	0	10.7	0.2	18.5	0	2.4	0	0	6.1	10
11	0	0	7.6	4.5	12.9	0	1.0	0	0.5	0.1	0.2	1.7	11
12	8.7	0	1.5	12.4	0	0	4.4	0.2	0	0.6	0.2	0	12
13	4.8	0	5.2	2.1	0.1	0	33.5 +	0	0	3.1	1.4	0	13
14	28.8 +	0.2	10.2 +	0.1	3.7	0.1	9.7	0	0	0.2	7.2	0.2	14
15	7.6	0.1	0	0	8.2	0	30.8	4.0	3.4	0.2	0.4	0	15
mm													
16	0.4	0.3	3.5	0	12.7	0	9.3	0.7	19.3 +	0	0.7	0.1	16
17	5.0	0.8	9.1	0	12.3	0	3.9	0	0	0.1	1.0	0	17
18	0.2	0	1.8	0.1	7.0	0.1	0	0	0.1	0.2	0	0	18
19	0	0	1.2	0	13.7	0	0	0	12.2	0.1	0.2	0	19
20	0.1	0	0.2	0	0	8.7	0	0	1.6	0.3	0.1	0	20
21	0	0.1	0	0	17.4	5.7	0.3	0.1	3.2	1.5	0.5	0	21
22	8.3	0	0	0	2.5	17.4	0.3	5.2	0	1.4	2.0	0	22
23	4.1	0	0	0	3.6	25.3 +	0.3	0	0.2	0	0.2	0	23
24	0.2	0.2	0	0.1	2.1	0.6	22.9	0	0.2	0.1	0	1.1	24
25	2.1	0.1	0	0	0.4	0	8.3	0	0.1	0.1	1.0	13.9	25
+ Maximum													
26	0	0	0	0	0	0	5.8	0	14.1	1.0	0.8	12.7	26
27	6.1	0	0	0	4.3	18.4	0	0	0.2	0	0.3	3.2	27
28	11.2	0	0	0	0	13.5	6.2	0.6	0	0.2	2.8	4.5	28
29	16.4	0	0	1.0	0	24.1	0	2.8	0	0.1	1.7	12.1	29
30	6.4	0	0	12.6 +	0	5.9	7.2	0.1	0	0.6	6.8	0.4	30
31	0.4	0	0	0	0	0	2.5	0.2	0	0	0	0	31
Monatssumme	118.3	27.1 -	49.5	33.9	158.8	156.6	204.5 +	70.7	58.1	38.6	51.5	116.0	mm
Niederschlagstage	14	6	10	5 -	18	12	19 +	9	7	9	13	14	Tage
Niederschlagstage grösser oder gleich als [mm]			226 >= 0.1	76 >= 5	37 >= 10	8 >= 20	>= 50	>= 100					Tage
Jahreswerte			Gesamtniederschlag	1083.6 mm			Niederschlagstage	136 Tage					



Periode	1999 - 2021 (ohne: 2012) (22 Jahre)												
Mit Monatssumme	67.0	60.5 -	68.7	78.8	111.5	97.8	114.2 +	97.0	74.5	78.0	68.2	78.8	mm
Max Tagessumme	28.8	21.4 -	40.8	52.2	63.4	43.9	77.2 +	67.1	54.9	35.8	46.4	34.3	mm
Jahr	2021	2013	2006	2006	1999	2007	2009	2007	2008	2004	2015	2004	
Periode	Max Gesamtniederschlag 1299.4 (2002)					Min Gesamtniederschlag 617.2 (2003)						mm	



Jahressumme	892.9	756.3		1137.4	1035.6	957.5	1120.4	963.1	927.8	1083.5	1053.1	1083.6	mm
-------------	-------	-------	--	--------	--------	-------	--------	-------	-------	--------	--------	--------	----

# Niederschlag

# Ried - Erschwil

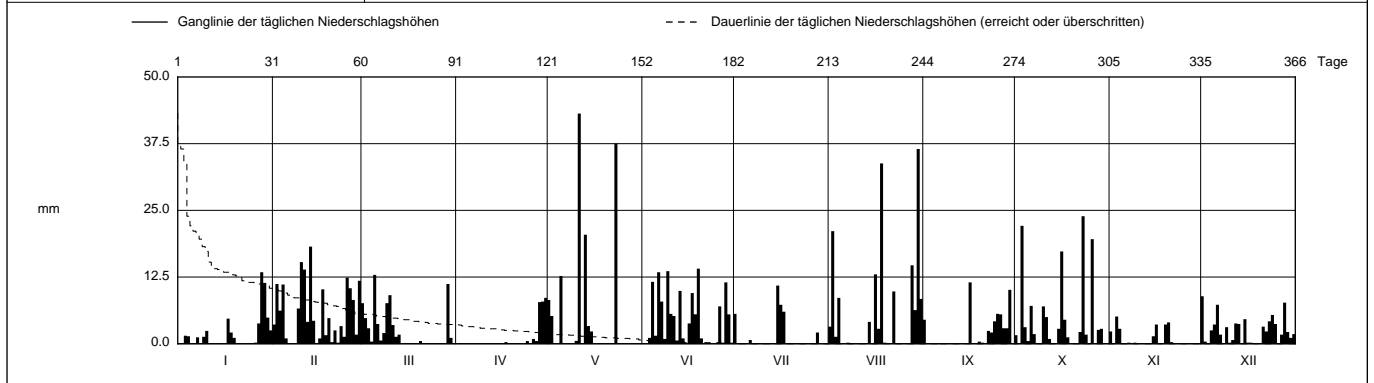
SO 608/247/002

Koordinaten 2 608 930 / 1 247 760

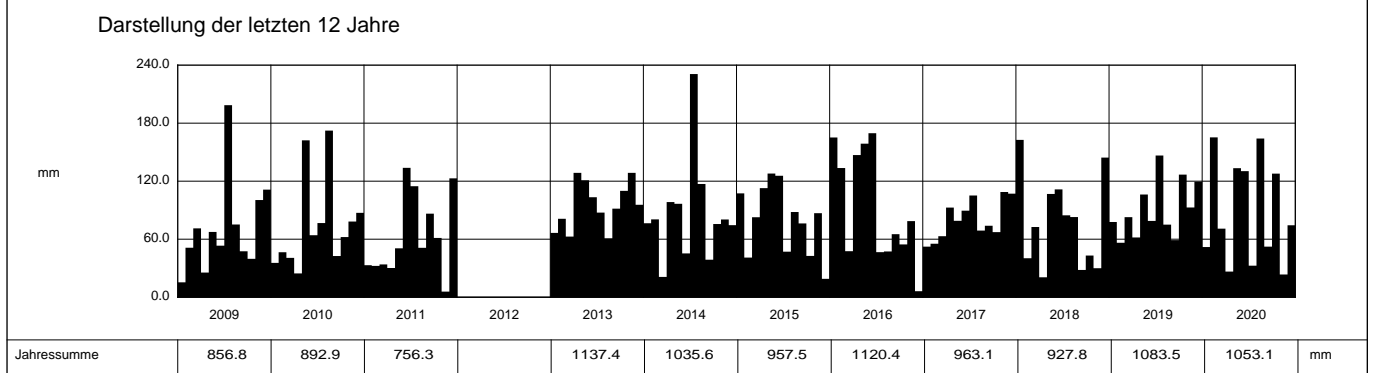
Stations Höhe 583.0 müM

Fläche - km2

2020	Jan	Feb	März	April	Mai	Juni	Juli	Aug	Sept	Okt	Nov	Dez	
1	0	3.6	7.6	0	8.2	0	5.6	3.2	4.5	1.6	2.3	8.9 +	1
2	0	11.2	4.8	0	5.2	0	0	21.1	0	0	0	0.4	2
3	1.5	6.2	2.9	0	0	1.1	0	1.3	0	22.1	5.1 +	0.1	3
4	1.4	11.1	0.4	0	0	11.6	0	8.6	0	3.1	2.8	2.5	4
5	0	1.0	12.9 +	0	12.7	1.5	0	0	0	0.5	0	3.6	5
<b>Tägliche Niederschlags-höhen</b>													
6	0	0	3.7	0	0	13.4	0.7	0	0	7.1	0	7.3	6
7	1.2	0	0.6	0	0	7.9	0	0.2	0	1.8	0.2	1.7	7
8	0	0	2.0	0	0	0.9	0	0.1	0	0.1	0	0.1	8
9	1.3	6.6	7.6	0	0	13.6	0	0	0	0	0.2	3.1	9
10	2.4	15.3	9.1	0	0.5	5.6	0	0	0	7.0	0	0.2	10
11	0	13.9	3.5	0	43.1 +	5.2	0	0	0	5.0	0	0.7	11
12	0	4.1	1.3	0	0	0.6	0	0	0.9	0	0	3.8	12
13	0	18.2 +	1.7	0	20.4	9.9	0	0	0	0	0	3.7	13
14	0	4.3	0	0	3.3	1.0	0	4.1	0	0	0	0	14
15	0	0.1	0	0	2.3	0	10.9 +	0	0	2.8	1.4	4.6	15
<b>mm</b>													
16	0	1.0	0	0	0	3.8	7.3	13.0	11.5 +	17.3	3.6	0.2	16
17	4.7	10.2	0	0.3	0	9.5	6.0	2.8	0	4.5	0	0.2	17
18	2.1	1.6	0	0	0	5.5	0	33.8	0	1.2	0	0	18
19	1.1	4.8	0	0	0	14.1 +	0	0.2	0.4	0	3.6	0	19
20	0	0.3	0.5	0	0	1.0	0	0	0.2	0	4.0	0	20
21	0	2.5	0	0	0	0	0	0	0	0	0.3	3.2	21
22	0	0.2	0	0	0.1	0	0	9.8	2.4	2.2	0	2.3	22
23	0	3.3	0	0	37.5	0	0	0	2.1	23.9 +	0	4.2	23
<b>+ Maximum</b>													
24	0	1.3	0	0.5	0	0	0	0	4.2	1.7	0	5.4	24
25	0	12.4	0	0	0	0	0	0	5.6	0	0	3.7	25
26	0.2	10.4	0	0.9	0	7.0	0	0	5.5	19.6	0	0	26
27	3.8	8.2	0	0.5	0	0.2	0	0	2.9	0	0	1.7	27
28	13.4 +	1.7	0	7.8	0	11.5	2.1	14.7	2.9	2.6	0	7.7	28
29	11.4	11.8	11.2	7.9	0	5.5	0	6.3	10.1	2.8	0	2.2	29
30	4.9		1.1	8.6 +	0	0	0	36.5 +	0	0	0	1.1	30
31	2.5		0		0	0	0	8.4		0		1.8	31
<b>Monatssumme</b>	<b>51.9</b>	<b>165.3 +</b>	<b>70.9</b>	<b>26.5</b>	<b>133.4</b>	<b>130.4</b>	<b>32.6</b>	<b>164.1</b>	<b>52.3</b>	<b>127.8</b>	<b>23.5 -</b>	<b>74.4</b>	<b>mm</b>
<b>Niederschlagstage</b>	<b>13</b>	<b>23 +</b>	<b>13</b>	<b>3 -</b>	<b>8</b>	<b>18</b>	<b>5</b>	<b>13</b>	<b>10</b>	<b>17</b>	<b>7</b>	<b>19</b>	<b>Tage</b>
<b>Niederschlagstage grösser oder gleich als [mm]</b>			184 >= 0.1	70 >= 5	34 >= 10	8 >= 20	>= 50	>= 100					<b>Tage</b>
<b>Jahreswerte</b>			<b>Gesamtniederschlag 1053.1 mm</b>				<b>Niederschlagstage 149 Tage</b>						



Periode	1999 - 2020 (ohne: 2012) (21 Jahre)												
Mit Monatssumme	64.6	62.1 -	69.6	81.0	109.2	95.0	109.9 +	98.2	75.3	79.9	69.0	77.0	mm
Max Tagessumme Jahr	28.6 2001	21.4 - 2013	40.8 2006	52.2 2006	63.4 1999	43.9 2007	77.2 + 2009	67.1 2007	54.9 2008	35.8 2004	46.4 2015	34.3 2004	mm
Periode	Max Gesamtniederschlag 1299.4 (2002)					Min Gesamtniederschlag 617.2 (2003)						mm	



<b>Jahressumme</b>	<b>856.8</b>	<b>892.9</b>	<b>756.3</b>		<b>1137.4</b>	<b>1035.6</b>	<b>957.5</b>	<b>1120.4</b>	<b>963.1</b>	<b>927.8</b>	<b>1083.5</b>	<b>1053.1</b>	<b>mm</b>
--------------------	--------------	--------------	--------------	--	---------------	---------------	--------------	---------------	--------------	--------------	---------------	---------------	-----------

# Niederschlag

# Ried - Erschwil

SO 608/247/002

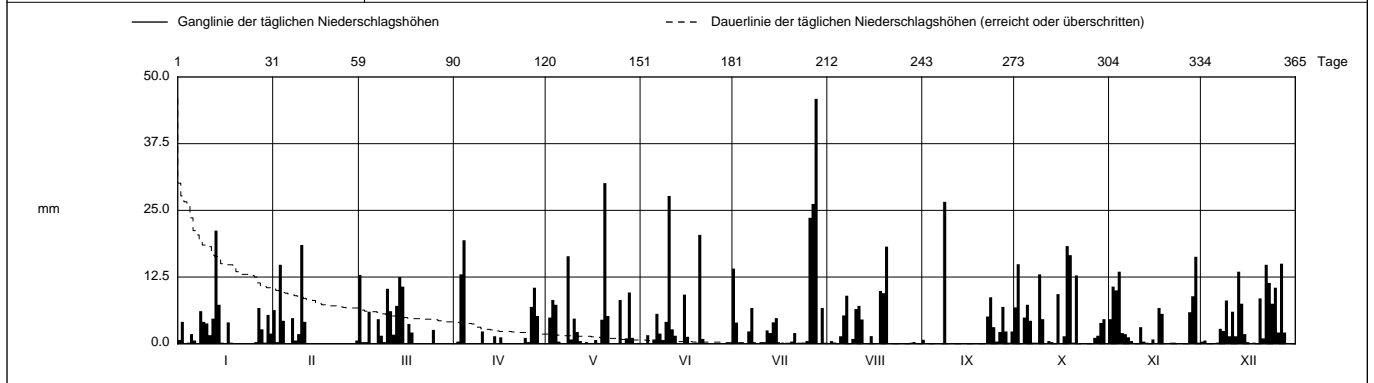
Koordinaten 2 608 930 / 1 247 760

Stations Höhe 583.0 müM

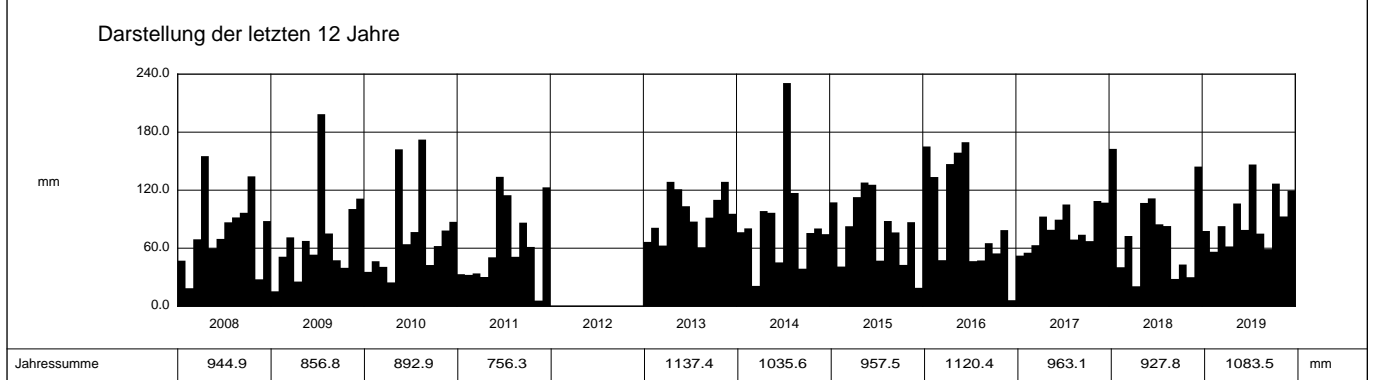
Fläche - km2

2019		Jan	Feb	März	April	Mai	Juni	Juli	Aug	Sept	Okt	Nov	Dez	
1		0.7	6.3	12.9 +	0	0	0.1	14.1	0	0.7	6.8	4.6	0.4	1
2		4.1	0.3	0.3	0.4	4.9	0	4.0	0.5	0	14.9	10.7	0.6	2
3		0	14.8	0.3	13.0	8.2	1.6	0	0.2	0	0	10.0	0	3
4		0.2	4.3	6.0	19.4 +	7.3	0	0	0.1	0	4.9	13.5	0	4
5		1.8	0.1	0	0	0.4	0.8	0	1.4	0	7.3	2.0	0	5
6	Tägliche Niederschlags-höhen	0.6	0	0.1	0	0	5.6	2.3	5.3	0	4.3	1.8	0.2	6
7		0	4.8	4.6	0	0	1.9	6.7	9.0	0.1	0.2	1.2	2.8	7
8		6.1	0.6	1.5	0	16.4	0.7	0	0	26.6 +	0.2	0.5	2.4	8
9		4.1	1.8	0.3	0	0.8	4.1	0	0.9	0.1	13.0	0	8.1	9
10		3.8	18.5 +	10.3	2.3	4.7	27.7 +	0.3	6.5	0	4.6	0	1.4	10
11		1.6	4.1	6.1	0.1	2.2	2.7	0	7.1	0	0	3.1	6.0	11
12		4.7	0.1	1.7	0	0.5	1.5	2.5	4.5	0	0.5	0.4	1.4	12
13		21.2 +	0	7.1	0	0	0	2.0	0	0.1	0.3	0.2	13.5	13
14		7.3	0	12.5	1.4	0.3	0.1	4.0	0	0	0	0	7.5	14
15		0.2	0	10.7	0	0.1	9.2	4.8	1.4	0	9.3	0.8	1.8	15
16	mm	0	0	0	1.2	0	1.3	0.1	0	0.1	0.1	0	0.3	16
17		4.0	0	3.7	0	0.7	0.1	0.2	0	0	1.4	6.7	0	17
18		0.2	0	2.1	0	0	0	0.1	9.9	0	18.3 +	5.6	0.2	18
19		0	0	0	0	4.5	0.2	0	9.5	0	16.6	0	0	19
20		0	0	0	0	30.1 +	20.4	0.4	18.2 +	0	0.2	0	8.5	20
21		0	0	0	0	5.2	0.9	2.0	0	0.1	12.8	0.2	1.0	21
22		0	0	0	0	0	0	0	5.1	0	0.2	0.2	14.8	22
23		0	0	0	0	0	0	0	0	8.7	0	0	11.4	23
24	+ Maximum	0	0	0	1.1	0	0	0.2	0	3.1	0	0	7.5	24
25		0	0	2.6	0.3	8.2	0	0.5	0	0.4	0	0	10.5	25
26		0.3	0	0	6.9	0	0	23.6	0	2.2	0	0	2.1	26
27		6.7	0	0	10.5	1.0	0	26.2	0	6.9	1.1	5.9	15.0 +	27
28		2.7	0.6	0	5.2	9.6	0	45.9 +	0.2	2.3	1.5	8.9	2.1	28
29		0.2	0	0	0	1.1	0	0	0.3	0.2	3.9	16.3 +	0	29
30		5.4	0	0	0	0	0	6.7	0	2.3	4.6	0.2	0	30
31		1.9	0	0	0	0	0	0	0	0	0	0	0	31

Monatssumme	77.8	56.3 -	82.8	61.8	106.2	78.9	146.5 +	75.1	59.0	126.8	92.8	119.5	mm	
Niederschlagstage	14	7 -	13	9	13	10	13	10	8	16	13	18 +	Tage	
Niederschlagstage grösser oder gleich als [mm]	215 >= 0.1		74 >= 5			34 >= 10		8 >= 20		>= 50		>= 100		Tage
Jahreswerte	Gesamtniederschlag 1083.5 mm					Niederschlagstage 144 Tage								



Periode	1999 - 2019 (ohne: 2012) (20 Jahre)												
Mit Monatssumme	65.2	56.9 -	69.6	83.7	108.0	93.2	113.8 +	95.0	76.4	77.5	71.3	77.1	mm
Max Tagessumme	28.6	21.4 -	40.8	52.2	63.4	43.9	77.2 +	67.1	54.9	35.8	46.4	34.3	mm
Jahr	2001	2013	2006	2006	1999	2007	2009	2007	2008	2004	2015	2004	
Periode	Max Gesamtniederschlag 1299.4 (2002)					Min Gesamtniederschlag 617.2 (2003)							mm



Jahressumme	944.9	856.8	892.9	756.3		1137.4	1035.6	957.5	1120.4	963.1	927.8	1083.5	mm
-------------	-------	-------	-------	-------	--	--------	--------	-------	--------	-------	-------	--------	----

# Niederschlag

# Ried - Erschwil

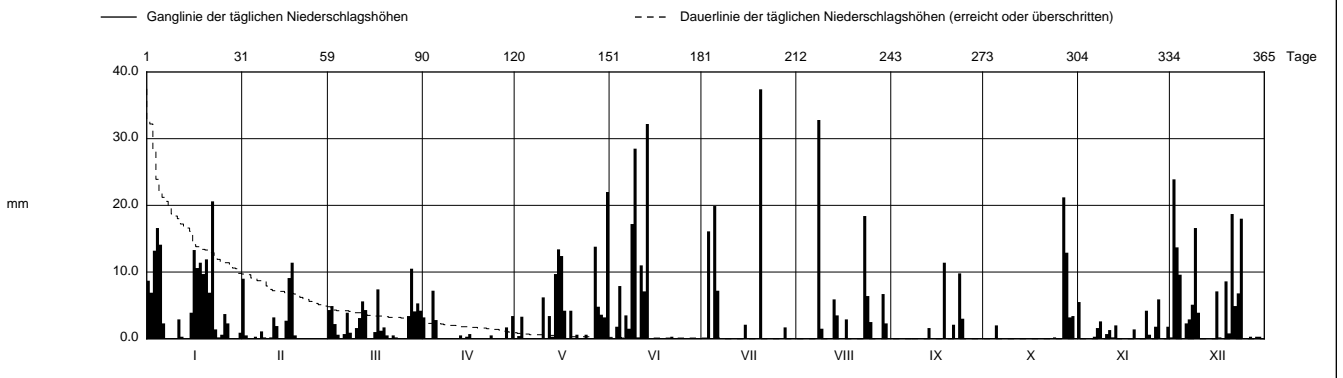
SO 608/247/002

Koordinaten 2 608 930 / 1 247 760

Stations Höhe 583.0 müM

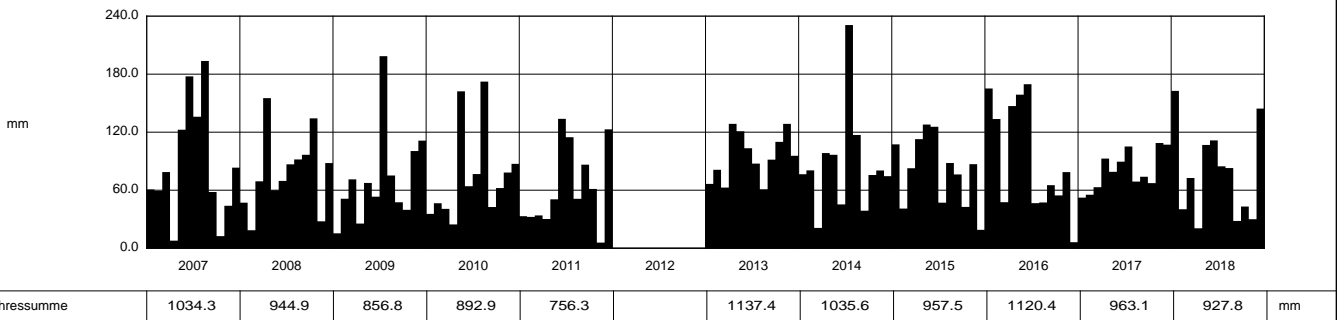
Fläche - km2

2018		Jan	Feb	März	April	Mai	Juni	Juli	Aug	Sept	Okt	Nov	Dez									
1		8.7	9.0	4.3	3.2	0.1	0	0	0	0	0	5.5	0.2	1								
2		6.9	0.5	4.9	0	0.4	0	0	0	0	0	0	23.9 +	2								
3		13.2	0.1	2.2	0	3.3	1.8	16.1	0	0	0	0	13.7	3								
4		16.6	0	0.6	7.2 +	0	7.9	0.1	0	0	0	0	9.6	4								
5		14.1	0.3	0	2.8	0.1	0	19.9	0	0	2.0	0	0	5								
<b>Tägliche Niederschlags-höhen</b>																						
6		2.3	0	0.7	0	0	3.5	7.2	0	0	0	0.3	2.3	6								
7		0	1.1	3.9	0	0.1	1.5	0	0	0	0	1.6	2.9	7								
8		0	0.2	0.9	0	0	17.2	0	32.8 +	0	0	2.6	5.1	8								
9		0.1	0	0.1	0	0.1	28.5	0	1.5	0	0	0	16.6	9								
10		0.1	0.2	1.6	0.1	6.2	0.2	0	0	0	0	0.7	3.9	10								
11		2.9	3.2	3.1	0	0	11.0	0	0	0	0.1	1.3	0.1	11								
12		0.3	1.9	5.6	0	3.4	7.1	0	0	0	0	0.2	0	12								
13		0	0.1	4.3	0.5	0.3	32.2 +	0	5.9	1.6	0	2.0	0	13								
14		0	0	0	0	9.7	0	0	3.5	0	0	0	0	14								
15		3.9	2.7	0.1	0.3	13.4	0	2.1	0	0	0	0	0	15								
<b>mm</b>																						
16		13.3	9.1	1.0	0.7	12.4	0	0.1	0	0	0	0	7.1	16								
17		10.6	11.4 +	7.4	0.1	4.2	0.1	0	2.9	0	0	0	0.2	17								
18		11.4	0.5	1.2	0	0.1	0	0	0	11.4 +	0.1	0	0	18								
19		9.7	0	1.7	0	4.2	0	0	0	0	0	1.4	8.6	19								
20		11.9	0	0.5	0	0	0	37.4 +	0	0	0	0	0.8	20								
21		6.9	0	0.1	0	0.6	0.3	0.1	0	2.1	0	0	18.7	21								
22		20.6 +	0	0.5	0	0.1	0.1	0	0	0.1	0	0	4.9	22								
23		1.4	0	0.2	0.5	0.1	0.1	0	18.4	9.8	0	4.2	6.8	23								
<b>+ Maximum</b>																						
24		0.2	0	0.1	0	0.6	0	0	6.4	3.0	0.2	0.6	18.0	24								
25		0.6	0	0	0	0	0	0	2.5	0.1	0	0	0	25								
26		3.7	0	0.1	0	0	0	0	0	0.1	0	1.8	0	26								
27		2.3	0	3.4	0.1	13.8	0	0	0	0	21.2 +	5.9 +	0.3	27								
28		0	0	10.5 +	1.7	4.8	0	1.7	0	0	12.9	0	0	28								
29		0.1	0	4.1	0	3.6	0	0	6.7	0	3.2	0.1	0.3	29								
30		0	0	5.3	3.4	3.2	0	0	2.3	0	3.4	1.8	0.3	30								
31		0.9	0	4.2	0	22.0 +	0	0	0	0	0	0.1	0.1	31								
<b>Monatssumme</b>		162.7 +	40.3	72.6	20.6 -	106.8	111.5	84.7	82.9	28.2	43.1	30.0	144.4	mm								
<b>Niederschlagstage</b>		18 +	7	17	5 -	13	9	6	10	5 -	5 -	10	14	Tage								
<b>Niederschlagstage grösser oder gleich als [mm]</b>				189 >= 0.1			57 >= 5			31 >= 10			8 >= 20			>= 50			>= 100			Tage
<b>Jahreswerte</b>				Gesamtniederschlag 927.8 mm						Niederschlagstage 119 Tage												



Periode	1999 - 2018 (ohne: 2012) (19 Jahre)												
Mit Monatssumme	64.6	56.9 -	68.9	84.8	108.1	94.0	112.0 +	96.0	77.3	74.9	70.2	74.9	mm
Max Tagessumme	28.6	21.4 -	40.8	52.2	63.4	43.9	77.2 +	67.1	54.9	35.8	46.4	34.3	mm
Jahr	2001	2013	2006	2006	1999	2007	2009	2007	2008	2004	2015	2004	
Periode	Max Gesamtniederschlag 1299.4 (2002)						Min Gesamtniederschlag 617.2 (2003)						mm

## Darstellung der letzten 12 Jahre



<b>Jahressumme</b>	1034.3	944.9	856.8	892.9	756.3		1137.4	1035.6	957.5	1120.4	963.1	927.8	mm
--------------------	--------	-------	-------	-------	-------	--	--------	--------	-------	--------	-------	-------	----

# Niederschlag

# Ried - Erschwil

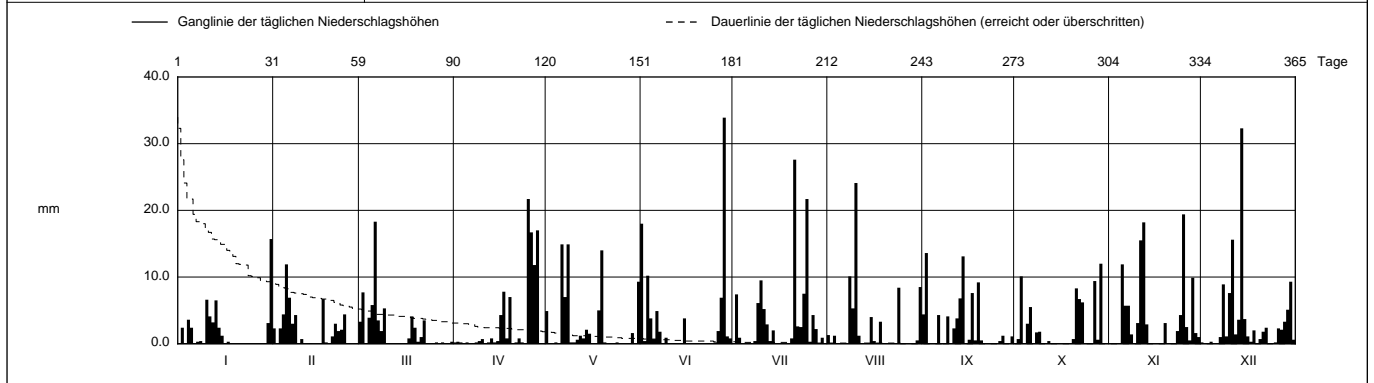
SO 608/247/002

Koordinaten 2 608 930 / 1 247 760

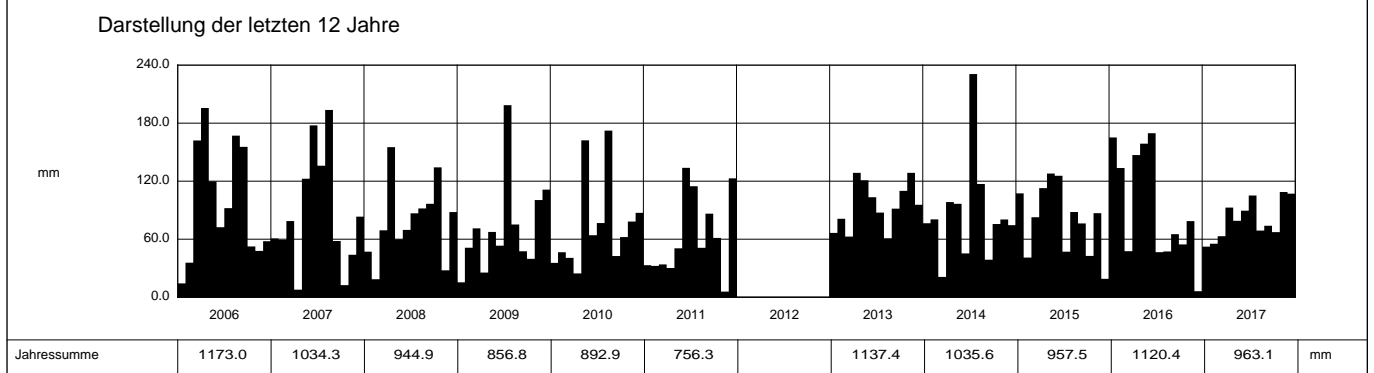
Stations Höhe 583.0 müM

Fläche - km2

2017		Jan	Feb	März	April	Mai	Juni	Juli	Aug	Sept	Okt	Nov	Dez		
1		0	2.3	3.3	0.2	4.9	18.0	0	1.3	4.4	0	0	0.2	1	
2		2.4	0	7.7	0.3	0	0.4	7.4	0.1	13.6 +	0.7	0	0	2	
3		0	2.3	0.1	0.2	0	10.2	0.9	1.2	0	10.1	0	0.1	3	
4		3.6	4.4	3.9	0	0.2	3.8	0	0.1	0	0	0.1	0.3	4	
5		2.4	11.9 +	5.8	0.2	0	0.7	0	0	0	3.0	11.9	0	5	
<b>Tägliche Niederschlags-höhen</b>															
6		0	6.9	18.3 +	0	14.9 +	4.9	0	0	4.3	5.5	5.7	0	6	
7		0.3	3.0	3.5	0.1	7.0	1.8	0	0	0.1	0	5.7	1.0	7	
8		0.4	4.3	1.9	0.2	14.9 +	0	0.4	10.1	0.1	1.7	1.4	8.9	8	
9		0	0	5.3	0.4	0.2	0.9	6.1	5.3	4.1	1.8	0	1.1	9	
10		6.6	0.7	0.1	0.7	0.2	0	9.5	24.1 +	0.1	0.1	3.1	7.6	10	
11		4.1	0	0	0.1	0.6	0	5.2	1.2	2.3	0	15.5	15.6	11	
12		3.2	0	0	0.2	1.2	0.1	2.9	0.1	3.8	0.4	18.2	1.4	12	
13		6.5	0.1	0	0.8	0.8	0	0.4	0	6.8	0	2.9	3.6	13	
14		2.4	0	0	0.2	2.1	0	2.0	0	13.1	0	0	32.3 +	14	
15		1.2	0	0	0.4	1.5	3.8	0	4.0	0.1	0.1	0	3.7	15	
<b>mm</b>															
16		0.1	0	0	4.3	0	0	0	0.4	0.6	0	0	1.1	16	
17		0.3	6.7	0.8	7.8	0	0	0	0	7.6	0	0	0.3	17	
18		0	0.2	4.1	0.8	5.0	0	0	3.3	0.5	0	0	2.0	18	
19		0	0	2.4	7.0	14.0	0	0	0.1	9.2	0	3.1	0.1	19	
20		0	1.1	0.3	0.1	0.2	0	0.8	0.1	0.5	0.7	0	0.7	20	
21		0	3.0	1.0	0.2	0	0	27.6 +	0	0	8.3	0.1	1.8	21	
22		0	1.9	3.5	0.8	0.1	0	2.6	0.1	0	6.7	0	2.4	22	
23		0	2.1	0.1	0.2	0.1	0.1	2.5	0	0	6.2	1.9	0	23	
<b>+ Maximum</b>															
24		0	4.4	0	0.1	0.2	0	7.5	8.4	0	0	4.3	0	24	
25		0	0	0.1	21.7 +	0	0.2	21.7	0	0	0	19.4 +	0.2	25	
26		0	0	0.2	16.7	0	1.9	0.3	0	0.4	0	2.5	2.3	26	
27		0	0	0	11.8	0	6.9	4.3	0	1.2	9.4	0.5	2.1	27	
28		0	0	0.2	17.0	0	33.9 +	2.2	0	0	0.6	9.9	3.3	28	
29		0	0	0.1	0.1	1.6	1.1	0	0	0	12.0 +	1.6	5.1	29	
30		3.1	0	0.1	0.1	0	0.8	0.9	0.5	1.1	0	1.0	9.3	30	
31		15.7 +	0	0.3	0	9.3	0	0	8.5	0	0	0	0.6	31	
<b>Monatssumme</b>		52.3 -	55.3	63.1	92.7	79.0	89.5	105.2	68.9	73.9	67.3	108.8 +	107.1	mm	
<b>Niederschlagstage</b>		11	13	12	7 -	11	10	13	10	12	10	16	18 +	Tage	
<b>Niederschlagstage grösser oder gleich als [mm]</b>		237 >= 0.1		63 >= 5			27 >= 10		6 >= 20		>= 50		>= 100		Tage
<b>Jahreswerte</b>		Gesamtniederschlag 963.1 mm					Niederschlagstage 143 Tage								



Periode	1999 - 2017 (ohne: 2012) (18 Jahre)												
Mit Monatssumme	59.1	57.8 -	68.6	88.4	108.2	93.0	113.5 +	96.7	80.1	76.6	72.4	71.0	mm
Max Tagessumme	28.6	21.4 -	40.8	52.2	63.4	43.9	77.2 +	67.1	54.9	35.8	46.4	34.3	mm
Jahr	2001	2013	2006	2006	1999	2007	2009	2007	2008	2004	2015	2004	
Periode	Max Gesamtniederschlag 1299.4 (2002)					Min Gesamtniederschlag 617.2 (2003)							mm



Jahressumme	2006	2007	2008	2009	2010	2011	2012	2013	2014	2015	2016	2017	mm
	1173.0	1034.3	944.9	856.8	892.9	756.3		1137.4	1035.6	957.5	1120.4	963.1	mm

# Niederschlag

# Ried - Erschwil

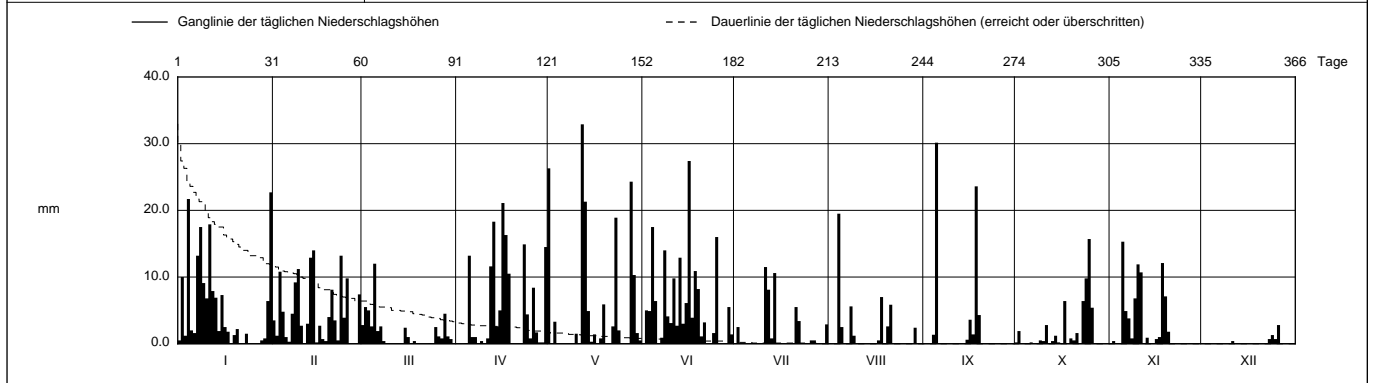
SO 608/247/002

Koordinaten 2 608 930 / 1 247 760

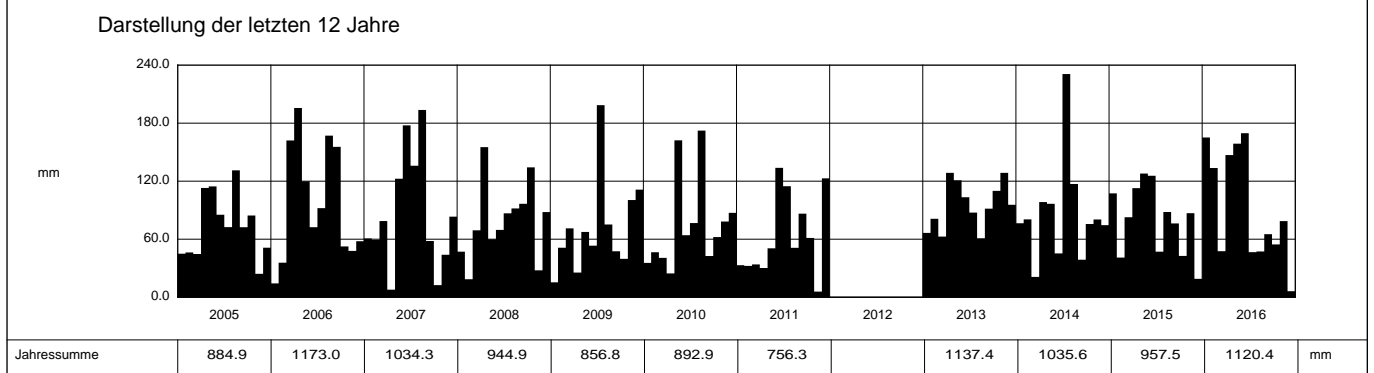
Stations Höhe 583.0 müM

Fläche - km2

2016		Jan	Feb	März	April	Mai	Juni	Juli	Aug	Sept	Okt	Nov	Dez									
1		0.5	3.5	2.8	0	26.3	0	0	0.1	0	0.2	0	0.1	1								
2		10.0	1.2	5.5	0	0	5.0	2.5	0	0	1.9	0.4	0	2								
3		1.2	10.8	5.0	0	3.3	4.9	0	0	0	0	0	0.1	3								
4		21.7	4.8	2.6	0.1	0	17.5	0	19.5 +	1.4	0	0	0	4								
5		2.0	1.0	12.0 +	13.2	0	6.4	0	2.5	30.2 +	0.1	15.3 +	0	5								
6	Tägliche Niederschlags-höhen	1.6	0.3	1.9	1.0	0	0	0	0	0	0.2	4.9	0	6								
7		13.2	4.5	2.6	1.0	0	0.9	0	0	0.1	0	3.8	0	7								
8		17.5	9.2	0.4	0	0	14.0	0	5.6	0	0	0.8	0	8								
9		9.1	11.2	0	0.4	0	4.1	0	1.2	0	0.5	6.8	0	9								
10		6.8	2.7	0	0	1.5	3.1	0	0	0	0.4	11.9	0	10								
11		17.9	0.1	0	0.8	0	9.8	11.5 +	0	0	2.8	10.7	0.4	11								
12		7.9	3.0	0	11.6	32.9 +	2.7	8.1	0	0	0	0	0	12								
13		6.9	12.9	0	18.3	21.3	12.9	0.8	0	0	0.4	0.9	0	13								
14		1.9	14.0 +	0	2.6	4.9	3.0	10.6	0	0	1.2	0	0	14								
15		7.3	0.2	2.4	5.0	0.3	6.1	0.1	0	0.6	0.2	0.1	0	15								
16	mm	2.5	2.7	1.0	21.1 +	1.4	27.4 +	0	0	3.6	0	0.7	0	16								
17		1.8	0.7	0	16.3	0	3.9	0	0.5	1.4	6.4	1.0	0	17								
18		0	0.4	0.4	10.5	0.8	10.9	0	7.0	23.6	0	12.1	0	18								
19		1.3	4.0	0.1	0	5.9	8.2	0	0.1	4.3	0.8	7.1	0	19								
20		2.2	8.1	0	0	0	1.1	0	2.6	0	0.5	1.8	0	20								
21		0	3.5	0	0	0	3.2	5.5	5.9	0	1.6	0	0	21								
22		0	0.5	0	0	2.6	0	3.4	0	0	0	0.1	0.1	22								
23		1.5	13.2	0.1	14.9	18.9	0	0	0	0	6.4	0	0.7	23								
24	+ Maximum	0	3.9	0.1	4.4	2.0	1.6	0.1	0	0	9.8	0	1.3	24								
25		0	9.8	2.5	0.8	0	16.0	0	0	0	15.7 +	0	0.7	25								
26		0	0	1.1	8.4	0	0	0.5	0	0.1	5.4	0	2.8 +	26								
27		0	0	0.8	1.7	0	0	0.5	0	0	0.1	0.1	0	27								
28		0.5	0	4.5	0.2	24.3	0	0	0	0	0	0.1	0	28								
29		0.8	7.4	1.1	0.2	10.3	5.5	0	2.4	0	0	0.1	0	29								
30		6.4	0.7	0.7	14.5	1.6	1.4	0.1	0	0	0	0	0	30								
31		22.7 +	0	0	0.5	0.5	2.9	0	0	0	0	0	0	31								
Monatssumme		165.2	133.6	47.6	147.0	158.8	169.6 +	46.6	47.3	65.2	54.6	78.7	6.2 -	mm								
Niederschlagstage		21	20	13	15	14	22 +	7	8	6	9	10	2 -	Tage								
Niederschlagstage grösser oder gleich als [mm]				209 >= 0.1			74 >= 5			42 >= 10			10 >= 20			>= 50			>= 100			Tage
Jahreswerte				Gesamtniederschlag 1120.4 mm						Niederschlagstage 147 Tage												



Periode	1999 - 2016 (ohne: 2012) (17 Jahre)												
Mit Monatssumme	59.5	58.0 -	69.0	88.2	109.9	93.2	114.0 +	98.4	80.4	77.2	70.3	68.9	mm
Max Tagessumme	28.6	21.4 -	40.8	52.2	63.4	43.9	77.2 +	67.1	54.9	35.8	46.4	34.3	mm
Jahr	2001	2013	2006	2006	1999	2007	2009	2007	2008	2004	2015	2004	
Periode	Max Gesamtniederschlag 1299.4 (2002)						Min Gesamtniederschlag 617.2 (2003)						mm



Jahressumme	884.9	1173.0	1034.3	944.9	856.8	892.9	756.3		1137.4	1035.6	957.5	1120.4	mm
-------------	-------	--------	--------	-------	-------	-------	-------	--	--------	--------	-------	--------	----



# Niederschlag

# Ried - Erschwil

SO 608/247/002

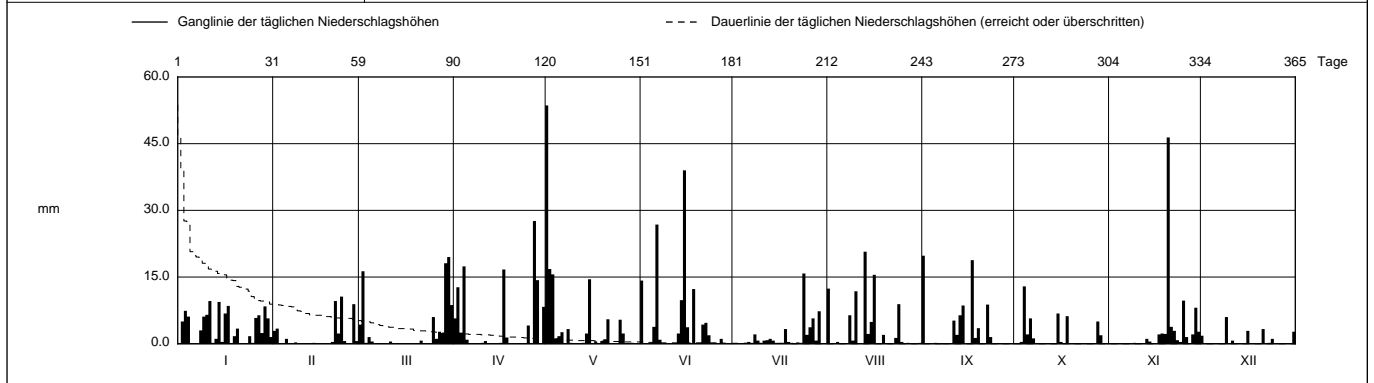
Koordinaten 608 930 / 247 760

Stations Höhe 583.0 müM

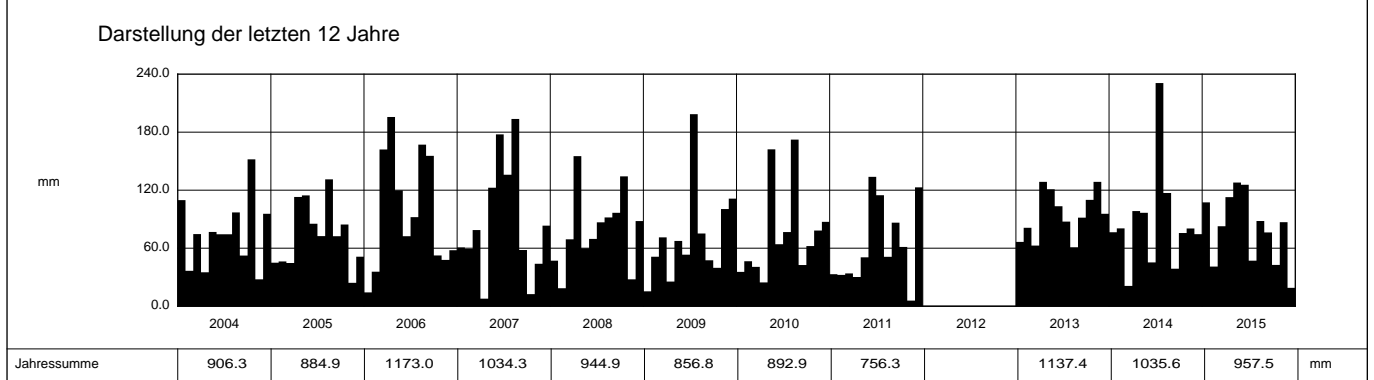
Fläche - km2

2015		Jan	Feb	März	April	Mai	Juni	Juli	Aug	Sept	Okt	Nov	Dez	
1		0	2.9	4.3	5.7	53.6 +	14.2	0	12.4	19.8 +	0	0	1.8	1
2		5.0	3.4	16.3	12.7	16.8	0	0	0	0	0	0	0	2
3		7.4	0	0.2	2.5	15.6	0	0	0	0	0.4	0	0	3
4		6.1	0.1	1.5	17.4	1.2	0	0.1	0.4	0	12.9 +	0	0	4
5		0	1.1	0.5	0.9	1.7	3.8	0.2	0	0.2	2.1	0	0	5
6	Tägliche Niederschlags-höhen	0	0	0	0.1	2.6	26.8	0.4	0	0.1	5.7	0	0	6
7		0	0	0.1	0	0.1	0.9	0.2	0	0.1	1.2	0	0	7
8		3.0	0.3	0	0	3.3	0	2.1	6.4	0	0	0	0	8
9		6.1	0	0	0	0.2	0	0.7	0.7	0	0	0.2	6.0 +	9
10		6.5	0	0	0.2	0	0	0	11.8	0	0	0	0	10
11		9.6 +	0	0.5	0.6	0	0	0.7	0	5.2	0	0	0.7	11
12		0.2	0	0	0	0	0	0.8	0	2.0	0	0	0	12
13		1.1	0	0	0	0.2	2.3	1.1	20.7 +	6.4	0.1	1.1	0	13
14		9.4	0.2	0	0	2.3	9.8	0.7	2.2	8.6	0	0.5	0	14
15		0.4	0	0	0	14.5	39.0 +	0.2	4.9	0	6.8	0.1	0	15
16	mm	6.8	0	0	0.2	0.1	3.7	0.2	15.5	0	0.4	0	2.9	16
17		8.5	0	0	16.7	0.5	0	0	18.8	0	2.1	0.1	0	17
18		0.1	0	0	1.4	0.1	12.3	3.3	0.1	1.3	6.2	2.3	0	18
19		1.7	0	0	0	0.6	0.1	0.4	2.0	3.5	0	2.2	0	19
20		3.4	0.4	0	0.1	1.0	0.2	0	0	0	0	46.4 +	0	20
21		0	9.6	0.7	0	5.5	4.3	0.1	0	0	0	3.8	3.3	21
22		0	2.3	0.1	0	0	4.7	0.3	0	8.8	0	2.9	0	22
23		0	10.6 +	0	0	0	1.9	0.2	1.3	1.5	0	0.8	0.2	23
24	+ Maximum	1.7	0.6	0	0	0	0	15.8 +	8.9	0	0	0.4	1.1	24
25		0.2	0	6.0	4.1	5.4	0.3	2.0	0.4	0	0	9.7	0	25
26		5.8	0	1.1	0	2.3	0	3.7	0	0	0	1.5	0	26
27		6.4	8.9	2.7	27.6 +	0	1.1	5.7	0.2	0	0	0	0	27
28		2.4	0.6	2.4	14.3	0	0.2	0.7	0	0	5.0	2.1	0	28
29		8.4	0	18.1	0	0.2	0	7.3	0	0	1.9	8.1	0.1	29
30		5.7	0	19.5 +	8.3	0.1	0	0	0	0	0	2.7	0.1	30
31		1.5	0	8.7	0	0	0	0	0.2	0	0	2.7	0	31

Monatssumme	107.4	41.0	82.7	112.8	127.9 +	125.6	47.1	88.1	76.3	42.7	86.9	19.0 -	mm	
Niederschlagstage	20 +	7	10	10	13	12	8	10	10	8	12	6 -	Tage	
Niederschlagstage grösser oder gleich als [mm]	200 >= 0.1		63 >= 5			26 >= 10		6 >= 20		1 >= 50		>= 100		Tage
Jahreswerte	Gesamtniederschlag 957.5 mm					Niederschlagstage 126 Tage								



Periode	1999 - 2015 (ohne: 2012) (16 Jahre)												
Mit Monatssumme	52.9 -	53.3	70.3	84.5	106.9	88.4	118.3 +	101.6	81.4	78.6	69.8	72.8	mm
Max Tagessumme Jahr	28.6 2001	21.4 - 2013	40.8 2006	52.2 2006	63.4 1999	43.9 2007	77.2 + 2009	67.1 2007	54.9 2008	35.8 2004	46.4 2015	34.3 2004	mm
Periode	Max Gesamtniederschlag 1299.4 (2002)					Min Gesamtniederschlag 617.2 (2003)						mm	



Jahressumme	906.3	884.9	1173.0	1034.3	944.9	856.8	892.9	756.3		1137.4	1035.6	957.5	mm
-------------	-------	-------	--------	--------	-------	-------	-------	-------	--	--------	--------	-------	----

# Niederschlag

# Ried - Erschwil

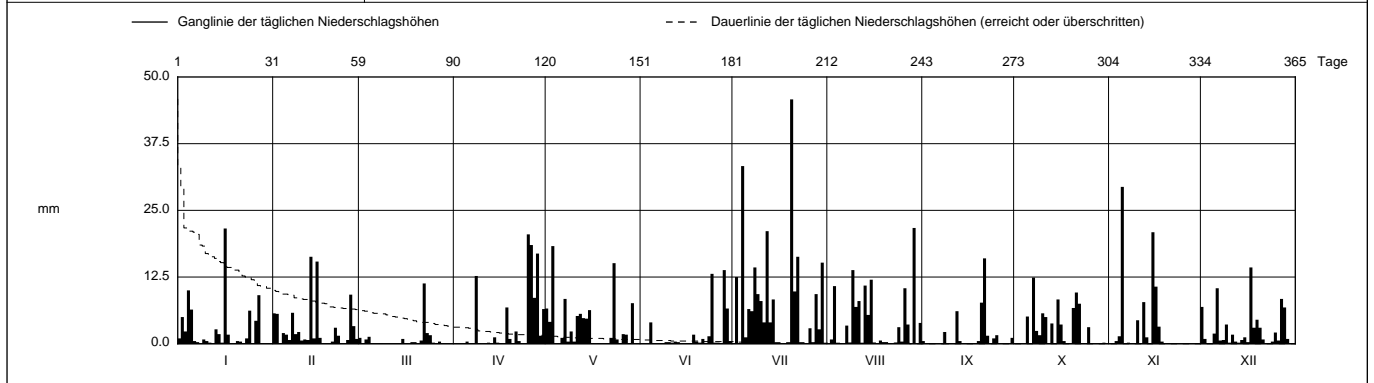
SO 608/247/002

Koordinaten 608 930 / 247 760

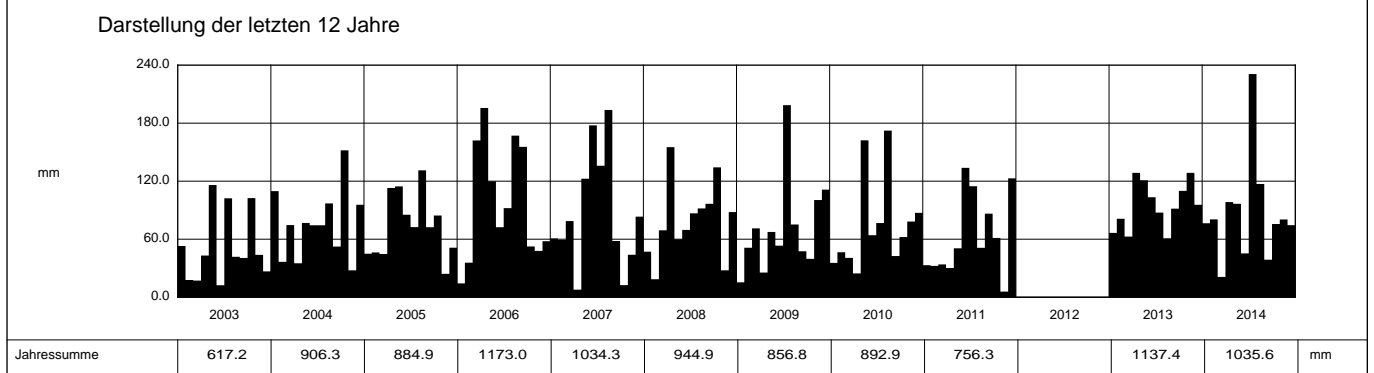
Stations Höhe 583.0 müM

Fläche - km2

2014	Jan	Feb	März	April	Mai	Juni	Juli	Aug	Sept	Okt	Nov	Dez			
1	1.0	5.7	1.1	0.1	6.6	0	0	0	0.5	0.1	0	6.9	1		
2	5.0	5.6	0	0	4.1	0	12.5	0.8	0	0	0	0.9	2		
3	2.3	0.1	0.8	0	18.3 +	0	0	10.8	0	0	0.5	0	3		
4	10.0	2.0	1.3	0.1	0	4.0	33.3	0	0	0	1.4	0	4		
5	6.4	1.7	0	0.4	0.1	0	1.2	0.1	0	5.1	29.4 +	1.9	5		
<b>Tägliche Niederschlags-höhen</b>															
6	0.5	0.7	0	0	1.1	0	6.5	0	0	0	0	10.4	6		
7	0.3	5.8	0	0.1	8.4	0.1	6.1	3.4	0	12.4 +	0.2	0.6	7		
8	0	1.8	0.1	12.7	0.4	0.1	14.3	0.2	2.2	2.4	0.1	0.7	8		
9	0.8	2.2	0	0.1	2.3	0.3	9.3	13.8	0	1.6	0	3.6	9		
10	0.5	0.6	0	0	0.4	0.3	8.0	6.9	0	5.7	4.4	0.2	10		
11	0.2	0.8	0	0.1	5.2	0.2	4.0	8.0	0	5.0	0	1.7	11		
12	0	0.7	0	0.2	5.6	0.4	21.1	0	6.1	0	7.8	0.4	12		
13	2.7	16.3 +	0	0	4.8	0.3	4.0	10.9	0.5	3.8	1.2	0.2	13		
14	1.8	1.0	0	1.2	4.7	0.1	8.3	5.4	0	0	0	0.7	14		
15	0.2	15.4	0.9	0.2	6.3	0.1	0	12.0	0	8.3	20.9	1.2	15		
mm															
16	21.6 +	1.1	0.1	0.1	0.1	0.1	0	0.2	0	3.6	10.7	0.3	16		
17	1.7	0	0	0	0	0.1	0	0	0	0.5	3.2	14.3 +	17		
18	0	0	0.3	6.8	0.1	1.7	0.1	0.6	0.1	0	0.4	3.0	18		
19	0	0	0.3	0.9	0	0.4	0	0.3	0.5	0	0	4.5	19		
20	0.5	0.4	0	0	0	0.2	45.8 +	0.3	7.7	6.7	0.1	3.0	20		
21	0.4	3.0	0.6	2.3	0	0.9	9.8	0.1	16.0 +	9.6	0	0.8	21		
22	0	1.5	11.3 +	0.5	1.1	0.1	16.3	0	1.5	7.5	0	0	22		
23	1.0	0	2.0	0.1	15.1	1.4	0	0.2	0	0.1	0	0	23		
<b>+ Maximum</b>															
24	6.2	0	1.6	0	0.8	13.1	0	3.1	1.0	0	0	0.4	24		
25	0	0.7	0.2	20.5 +	0	0.2	0	0.4	1.6	3.1	0	2.1	25		
26	4.3	9.2	0	18.5	1.8	0.2	2.9	10.4	0	0	0.1	0.6	26		
27	9.1	3.3	0.4	8.6	1.7	0.1	0	3.6	0	0	0	8.4	27		
28	0	0.9	0	16.9	0	13.8 +	9.3	0	0	0	0	6.8	28		
29	0	0	0	1.5	7.6	6.6	2.7	21.7 +	0	0	0	0.9	29		
30	0	0	0	6.5	0	0.5	15.2	0	1.1	0.2	0	0	30		
31	0	0	0	0	0	0	0.1	3.9	0	0	0	0	31		
<b>Monatssumme</b>	<b>76.5</b>	<b>80.5</b>	<b>21.0 -</b>	<b>98.4</b>	<b>96.6</b>	<b>45.3</b>	<b>230.8 +</b>	<b>117.1</b>	<b>38.8</b>	<b>75.7</b>	<b>80.4</b>	<b>74.5</b>	<b>mm</b>		
<b>Niederschlagstage</b>	<b>13</b>	<b>15</b>	<b>5 -</b>	<b>10</b>	<b>16</b>	<b>6</b>	<b>19 +</b>	<b>13</b>	<b>8</b>	<b>13</b>	<b>8</b>	<b>13</b>	<b>Tage</b>		
<b>Niederschlagstage grösser oder gleich als [mm]</b>			239 >= 0.1		74 >= 5		33 >= 10		8 >= 20		>= 50		>= 100		<b>Tage</b>
<b>Jahreswerte</b>			<b>Gesamtniederschlag 1035.6 mm</b>				<b>Niederschlagstage 139 Tage</b>								



Periode	1999 - 2014 (ohne: 2012)											(15 Jahre)	
Mit Monatssumme	49.3 -	54.1	69.5	82.6	105.5	85.9	123.0 +	102.5	81.7	81.0	68.6	76.4	mm
Max Tagessumme	28.6	21.4 -	40.8	52.2	63.4	43.9	77.2 +	67.1	54.9	35.8	34.5	34.3	mm
Jahr	2001	2013	2006	2006	1999	2007	2009	2007	2008	2004	1999	2004	
Periode	Max Gesamtniederschlag 1299.4 (2002)					Min Gesamtniederschlag 617.2 (2003)						mm	



<b>Jahressumme</b>	<b>617.2</b>	<b>906.3</b>	<b>884.9</b>	<b>1173.0</b>	<b>1034.3</b>	<b>944.9</b>	<b>856.8</b>	<b>892.9</b>	<b>756.3</b>		<b>1137.4</b>	<b>1035.6</b>	<b>mm</b>
--------------------	--------------	--------------	--------------	---------------	---------------	--------------	--------------	--------------	--------------	--	---------------	---------------	-----------

# Niederschlag

# Ried - Erschwil

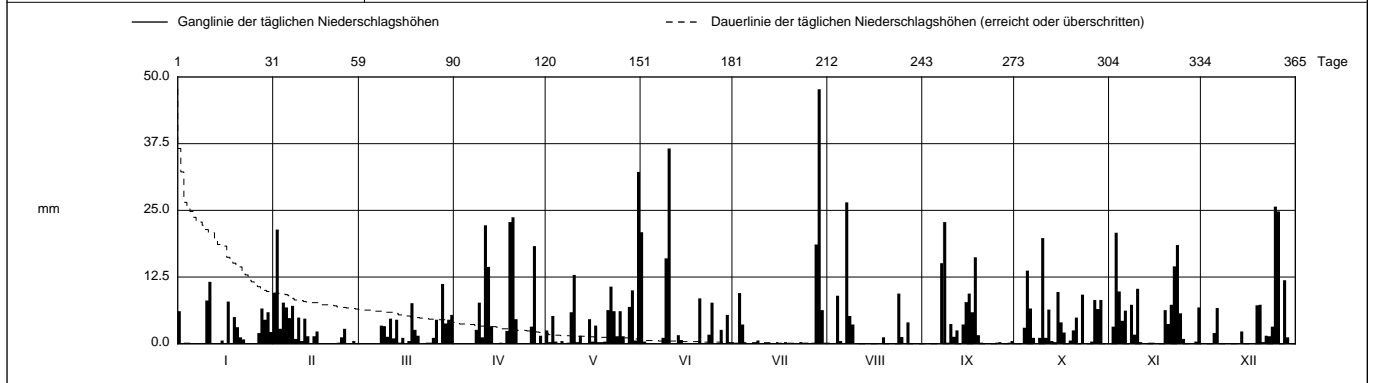
SO 608/247/002

Koordinaten 608 930 / 247 760

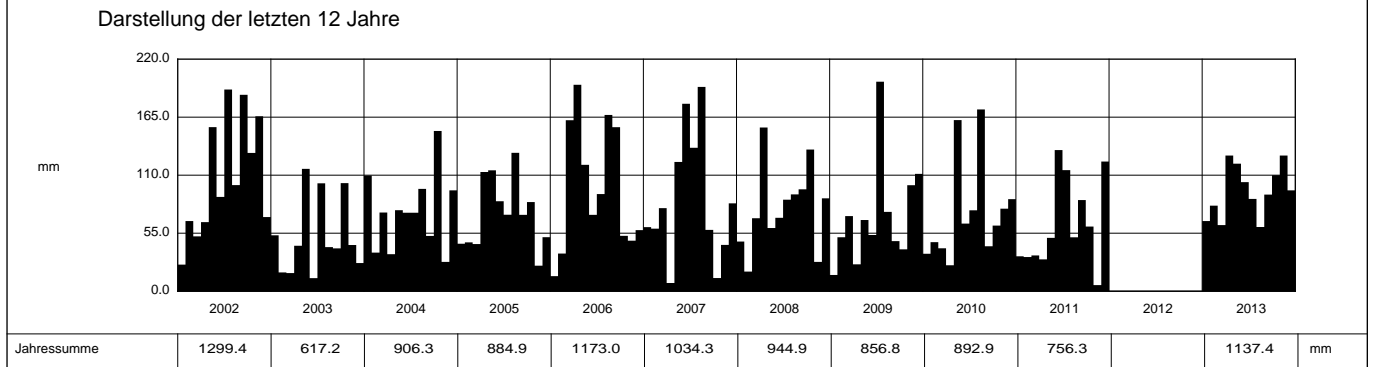
Stations Höhe 583.0 müM

Fläche - km2

2013		Jan	Feb	März	April	Mai	Juni	Juli	Aug	Sept	Okt	Nov	Dez		
1		6.1	9.5	0	0	2.5	20.9	0	0	0	0	0	0	1	
2		0	21.4 +	0	0	0.3	0.4	0.2	0	0	0	3.2	0	2	
3		0.2	2.8	0	0	5.2	0.1	9.5	0	0.1	0	20.8 +	0	3	
4		0.2	7.7	0	0	0.4	0.1	3.6	9.0	0	3.0	9.8	0	4	
5		0	6.8	0	0	0	0	0	0.5	0	13.7	4.3	2.0	5	
6	Tägliche Niederschlags-höhen	0	4.8	0	0	0.5	0	0	0	0	6.6	6.2	6.7	6	
7		0	7.1	0	0	0	0	0	26.5 +	15.1	1.1	0.1	0.1	7	
8		0	0.9	3.4	2.6	0.2	1.1	0	5.2	22.8 +	0	7.3	0	8	
9		0	4.9	3.3	7.7	5.9	16.0	0.6	3.6	0.2	1.1	1.7	0	9	
10		8.1	0.5	1.3	1.2	12.9	36.6 +	0	0	3.7	19.8 +	10.3	0	10	
11		11.6 +	4.7	4.7	22.2	0.3	0	0	0	1.3	1.1	0.3	0	11	
12		0.1	1.4	1.0	14.4	1.5	0	0	0	2.5	6.4	0	0	12	
13		0	0	4.5	3.3	0	1.6	0	0	0	0.5	0.1	0	13	
14		0.1	1.4	0.2	0	0	0.7	0	0	3.6	0.3	0.2	2.3	14	
15		0.6	2.3	1.1	0.1	4.6	0	0	0	7.8	9.7	0.2	0	15	
16	mm	0.1	0	0	0.2	0.4	0	0	0	9.4	4.0	0	0	16	
17		7.9	0	0.5	0	3.4	0	0	0	5.9	2.1	0	0	17	
18		0.1	0.1	7.6	2.4	0.3	0	0.3	0.1	16.2	0	0	0	18	
19		5.0	0	2.6	22.8	0.3	0	0	1.2	1.6	0.6	6.3	7.2	19	
20		3.1	0.1	1.5	23.7 +	0.4	8.5	0	0.1	0.2	2.5	3.7	7.3	20	
21		1.2	0	0.1	4.6	6.3	0	0	0	0	4.9	7.3	0.3	21	
22		0.8	0.2	0	0.1	10.7	0	0	0	0	0	14.5	1.5	22	
23		0	1.2	0.2	0	6.1	1.7	0.3	0	0	9.2	18.5	1.4	23	
24	+ Maximum	0	2.8	0.2	0.1	1.4	7.7	0.1	9.4	0	0	5.7	3.2	24	
25		0	0	1.1	0.1	6.1	0	0.2	1.3	0.2	0	0.9	25.7 +	25	
26		0.1	0	4.5	3.2	1.4	0	0.1	0	0.3	0.4	0	24.8	26	
27		2.0	0.5	0	18.3	0.1	2.6	0	4.0	0	8.2	0	0	27	
28		6.6	0	11.2 +	0.1	6.9	0	18.6	0	0	6.5	0	11.9	28	
29		4.5	0	3.8	1.5	10.0	5.4	47.7 +	0	0.2	8.2	0.4	1.2	29	
30		5.9	0	4.5	0	0.6	0	6.3	0	0.5	0.1	6.8	0	30	
31		2.2	0	5.4	0	32.2 +	0	0	0	0	0	0	0	31	
Monatssumme		66.5	81.1	62.7	128.6 +	120.9	103.4	87.5	60.9 -	91.6	110.0	128.6 +	95.6	mm	
Niederschlagstage		12	14	16	13	16	10	5 -	8	11	17 +	15	12	Tage	
Niederschlagstage grösser oder gleich als [mm]		221 >= 0.1		77 >= 5			30 >= 10		13 >= 20		>= 50		>= 100		Tage
Jahreswerte		Gesamtniederschlag 1137.4 mm					Niederschlagstage 149 Tage								



Periode	1999 - 2013 (ohne: 2012)											(14 Jahre)		
Mit Monatssumme	47.3 -	52.2	72.9	81.5	106.1	88.8	115.3 +	101.4	84.8	81.4	67.8	76.5	mm	
Max Tagessumme	28.6	21.4 -	40.8	52.2	63.4	43.9	77.2 +	67.1	54.9	35.8	34.5	34.3	mm	
Jahr	2001	2013	2006	2006	1999	2007	2009	2007	2008	2004	1999	2004		
Periode	Max Gesamtniederschlag 1299.4 (2002)					Min Gesamtniederschlag 617.2 (2003)								



# Niederschlag

# Ried - Erschwil

SO 608/247/002

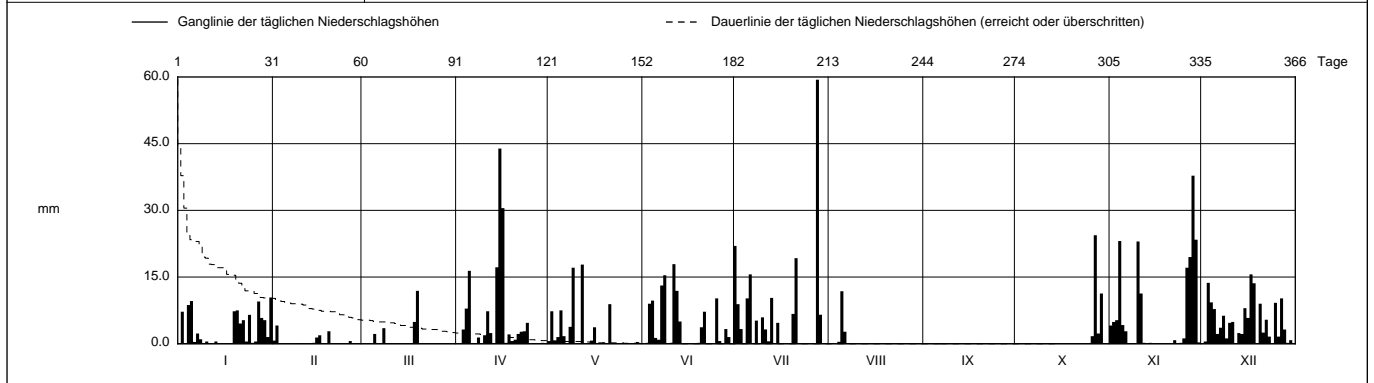
Daten unvollständig { ... }

Koordinaten 608 930 / 247 760

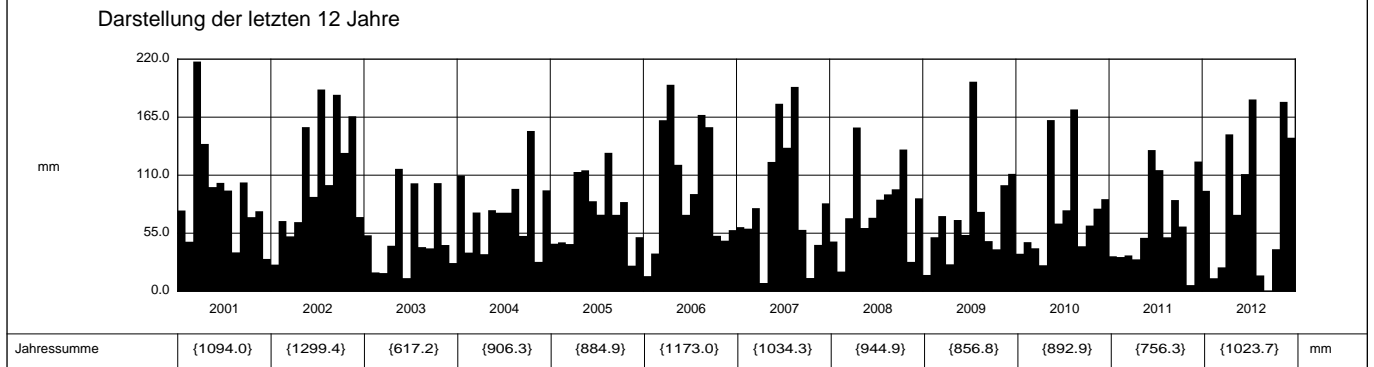
Stations Höhe 583.0 müM

Fläche - km2

2012	Jan	Feb	März	April	Mai	Juni	Juli	Aug	Sept	Okt	Nov	Dez	
1	0	0.7	0	0	0.6	0	22.0	0	{ }	{ }	4.1	0	1
2	7.2	4.1 +	0	0	7.3	0	8.9	0	{ }	{ }	4.9	0.5	2
3	0.1	0	0	3.2	0.7	9.0	3.3	0	{ }	{ }	5.3	13.7	3
4	8.7	0.1	0	7.9	1.5	9.7	0	0.4	{ }	{0}	23.1	9.3	4
5	9.6	0	2.2	16.4	7.5	1.3	10.2	11.8 +	{ }	{ }	4.2	7.8	5
<b>Tägliche Niederschlags-höhen</b>													
6	0.4	0	0	0.1	1.7	0.9	15.6	{2.7}	{ }	{ }	2.8	2.2	6
7	2.3	0.1	0	0.1	0.1	13.1	0	{ }	{ }	{ }	0	3.6	7
8	1.0	0	3.5	1.4	3.8	15.4	5.2	{ }	{ }	{ }	0	6.3	8
9	0	0.1	0	0	17.1	0	0	{ }	{ }	{ }	0.1	1.2	9
10	0.5	0.1	0	1.9	0	0	5.9	{ }	{ }	{ }	23.0	4.7	10
11	0	0	0.1	7.3	0	17.9 +	3.2	{ }	{ }	{ }	11.3	4.9	11
12	0	0	0	2.4	17.8 +	11.9	0.5	{ }	{ }	{ }	0.2	0	12
13	0.5	0.1	0	0	0	5.0	10.3	{ }	{ }	{ }	0	2.4	13
14	0	0.2	0	17.2	0	0	0	{ }	{ }	{ }	0.2	2.2	14
15	0	1.4	0	43.9 +	0.7	0	4.7	{ }	{ }	{ }	0	8.0	15
<b>mm</b>													
16	0	1.9	0	30.5	3.7	0	0	{ }	{ }	{ }	0	5.8	16
17	0	0	0	0.2	0	0	0	{ }	{ }	{ }	0	15.6 +	17
18	0	0	4.9	2.1	0.1	0	0	{ }	{ }	{ }	0	13.6	18
19	7.3	2.8	11.9 +	0.6	0.3	0.2	0	{ }	{ }	{ }	0	0	19
20	7.5	0	0	0.9	0	3.7	6.7	{ }	{ }	{ }	0	9.0	20
21	4.6	0	0	2.2	8.9	7.2	19.3	{ }	{ }	{ }	0	2.5	21
22	5.3	0	0	2.7	0.1	0.1	0	{ }	{ }	{ }	0.8	5.4	22
23	0.5	0	0	2.8	0	0	0	{ }	{ }	{ }	0	1.6	23
<b>+ Maximum</b>													
24	6.5	0	0	4.7	0	0	0	{ }	{ }	{ }	0.2	0	24
25	0.2	0.1	0	0	0	10.2	0	{ }	{ }	{ }	1.2	9.2	25
26	0.5	0.6	0	0	0	0.6	0	{ }	{ }	1.7	17.1	1.6	26
27	9.5	0	0	0	0	0	0	{ }	{ }	24.4 +	19.5	10.2	27
28	5.8	0	0	0	0	3.3	59.4 +	{ }	{ }	2.3	37.8 +	3.2	28
29	5.3	0	0	0.2	0	1.5	6.5	{ }	{ }	11.3	23.4	0.2	29
30	1.5	0	0	0	0.4	0	0	{ }	{ }	0.1	0.3	0.8	30
31	10.4 +	0	0	0	0.1	0	0	{ }	{ }	0	0	0	31
<b>Monatssumme</b>	95.2	12.3 -	22.6	148.7	72.4	111.0	181.8 +	{15.0}		{39.8}	179.5	145.5	mm
<b>Niederschlagstage</b>	15	4	4	15	9	13	14	{2} -		{4}	13	23 +	Tag
<b>Niederschlagstage grösser oder gleich als [mm]</b>			{164} >= 0.1	{66} >= 5	{33} >= 10	{9} >= 20	{1} >= 50						Tag
<b>Jahreswerte</b>			Gesamtniederschlag {1023.7} mm				Niederschlagstage {116} Tage						



Periode	1999 - 2012											(14 Jahre)	
Mit Monatssumme	49.4	47.3 -	70.1	82.9	102.6	89.4	122.0 +	{104.5}	{84.3}	{79.2}	71.4	80.1	mm
Max Tagessumme	28.6	21.4 -	40.8	52.2	63.4	43.9	77.2 +	{67.1}	{54.9}	{35.8}	37.8	34.3	mm
Jahr	2001	1999	2006	2006	1999	2007	2009	2007	2008	2004	2012	2004	
Periode	Max Gesamtniederschlag {1299.4} (2002)						Min Gesamtniederschlag {617.2} (2003)						mm



Jahressumme	2001	2002	2003	2004	2005	2006	2007	2008	2009	2010	2011	2012	mm
	{1094.0}	{1299.4}	{617.2}	{906.3}	{884.9}	{1173.0}	{1034.3}	{944.9}	{856.8}	{892.9}	{756.3}	{1023.7}	mm

# Niederschlag

# Ried - Erschwil

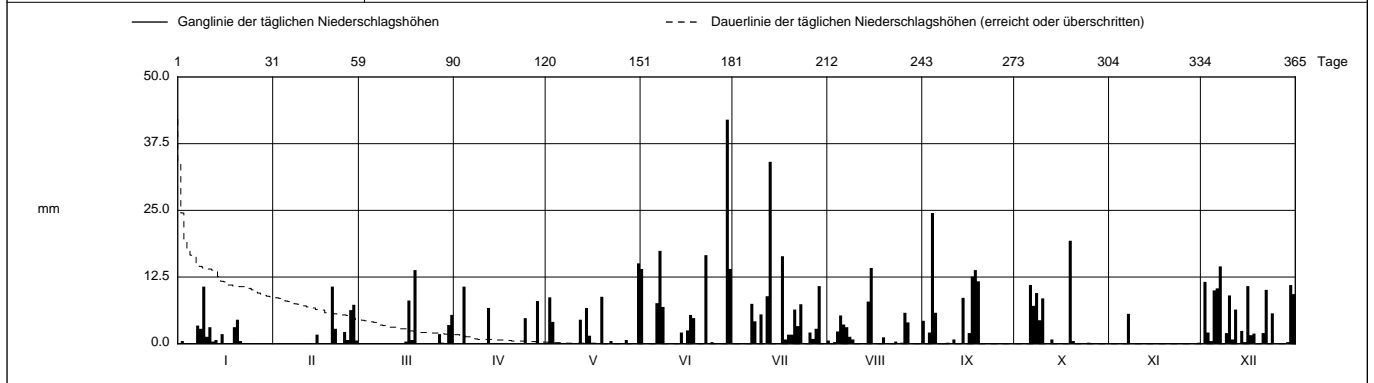
SO 608/247/002

Koordinaten 608 930 / 247 760

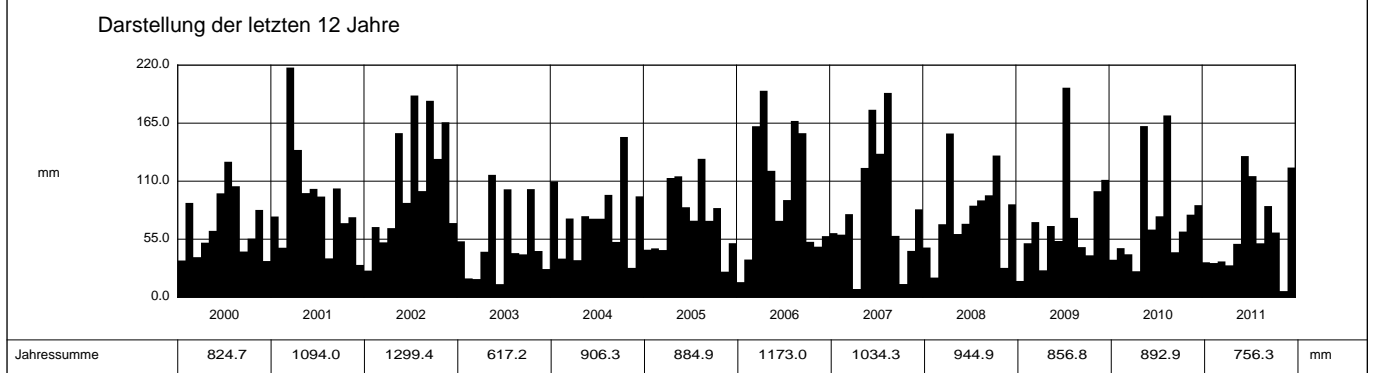
Stations Höhe 583.0 müM

Fläche - km2

2011	Jan	Feb	März	April	Mai	Juni	Juli	Aug	Sept	Okt	Nov	Dez		
1	0	0	0	0	0	14.0	0.1	0.6	4.3	0	0	0	1	
2	0.5	0	0	0	8.7	0.1	0	0	0	0	0	11.6	2	
3	0	0	0	0	4.1	0	0	0.3	2.1	0	0	2.1	3	
4	0	0	0	10.7 +	0	0	0	2.3	24.5 +	0	0	0.5	4	
5	0.1	0	0	0	0	0	0	5.3	5.8	0	0	10.0	5	
<b>Tägliche Niederschlags-höhen</b>														
6	0.1	0	0	0	0	7.6	0	3.6	0	11.0	0	10.4	6	
7	3.4	0	0	0	0	17.4	7.5	3.1	0	7.1	5.6 +	14.5 +	7	
8	2.8	0	0	0	0	6.9	4.2	1.3	0	9.5	0	0	8	
9	10.7 +	0	0	0	0	0	0	0.8	0.2	4.4	0	2.0	9	
10	1.3	0	0	0	0	0	5.5	0	0	8.5	0	9.1	10	
11	3.1	0	0	0	0	0	0	0	0.8	0	0	0.8	11	
12	0.4	0	0	6.7	4.5	0	8.9	0	0	0	0	6.4	12	
13	0.7	0.1	0	0	0	0.1	34.1 +	0	0	0.8	0	0	13	
14	0	0	0	0	6.7	2.1	0.1	7.9	8.6	0	0	2.4	14	
15	1.8	1.7	0	0	1.5	0	0	14.2 +	0	0	0	0.3	15	
<b>mm</b>														
16	0	0	0.4	0	0	2.5	0	0	2.0	0	0	10.8	16	
17	0	0	8.1	0	0	5.4	16.4	0	12.6	0	0	1.6	17	
18	0	0	0.7	0	0	4.8	0.8	0.1	13.8	0	0	1.9	18	
19	3.1	0	13.8 +	0	8.8	0	1.7	1.2	11.7	19.3 +	0	0.1	19	
20	4.5	10.7 +	0	0	0	0	1.7	0	0	0.5	0	0.1	20	
21	0.5	2.8	0	0	0	0	6.4	0	0	0	0	2.0	21	
22	0	0	0	0	0.5	16.6	3.3	0	0	0	0	10.1	22	
23	0	0	0	0	0	0	7.4	0.4	0	0	0	0	23	
<b>+ Maximum</b>														
24	0	2.2	0	4.8	0	0.3	0.1	0	0	0	0	5.7	24	
25	0	0.7	0	0	0	0	0	0.2	0	0.2	0	0	25	
26	0.1	6.3	0	0	0	0	2.1	5.8	0	0	0	0	26	
27	0	7.3	1.8	0	0.7	0	0.9	4.0	0	0	0	0	27	
28	0	0.6	0.2	8.0	0	0	2.8	0	0	0	0	0	28	
29	0	0	0	0	0	42.0 +	10.8	0	0	0	0	0.3	29	
30	0	0	3.5	0	0	14.0	0	0	0	0	0.2	11.0	30	
31	0	0	5.4	0	15.1 +	0	0	0	0	0	0	9.3	31	
<b>Monatssumme</b>	<b>33.1</b>	<b>32.4</b>	<b>33.9</b>	<b>30.2</b>	<b>50.6</b>	<b>133.8 +</b>	<b>114.8</b>	<b>51.1</b>	<b>86.4</b>	<b>61.3</b>	<b>5.8 -</b>	<b>122.9</b>	<b>mm</b>	
<b>Niederschlagstage</b>	<b>8</b>	<b>6</b>	<b>5</b>	<b>4</b>	<b>7</b>	<b>11</b>	<b>14</b>	<b>10</b>	<b>9</b>	<b>6</b>	<b>1 -</b>	<b>17 +</b>	<b>Tage</b>	
<b>Niederschlagstage grösser oder gleich als [mm]</b>	139 >= 0.1		57 >= 5			27 >= 10		3 >= 20		>= 50		>= 100		<b>Tage</b>
<b>Jahreswerte</b>	<b>Gesamtniederschlag 756.3 mm</b>					<b>Niederschlagstage 98 Tage</b>								



Periode	1999 - 2011											(13 Jahre)	
Mit Monatssumme	45.8 -	50.0	73.7	77.8	105.0	87.7	117.4 +	104.5	84.3	79.2	63.1	75.1	mm
Max Tagessumme	28.6	21.4 -	40.8	52.2	63.4	43.9	77.2 +	67.1	54.9	35.8	34.5	34.3	mm
Jahr	2001	1999	2006	2006	1999	2007	2009	2007	2008	2004	1999	2004	
Periode	Max Gesamtniederschlag 1299.4 (2002)					Min Gesamtniederschlag 617.2 (2003)							mm



<b>Jahressumme</b>	<b>824.7</b>	<b>1094.0</b>	<b>1299.4</b>	<b>617.2</b>	<b>906.3</b>	<b>884.9</b>	<b>1173.0</b>	<b>1034.3</b>	<b>944.9</b>	<b>856.8</b>	<b>892.9</b>	<b>756.3</b>	<b>mm</b>
--------------------	--------------	---------------	---------------	--------------	--------------	--------------	---------------	---------------	--------------	--------------	--------------	--------------	-----------