

Niederschlag

Gemeindehaus - Gerlafingen

SO 610/224/030

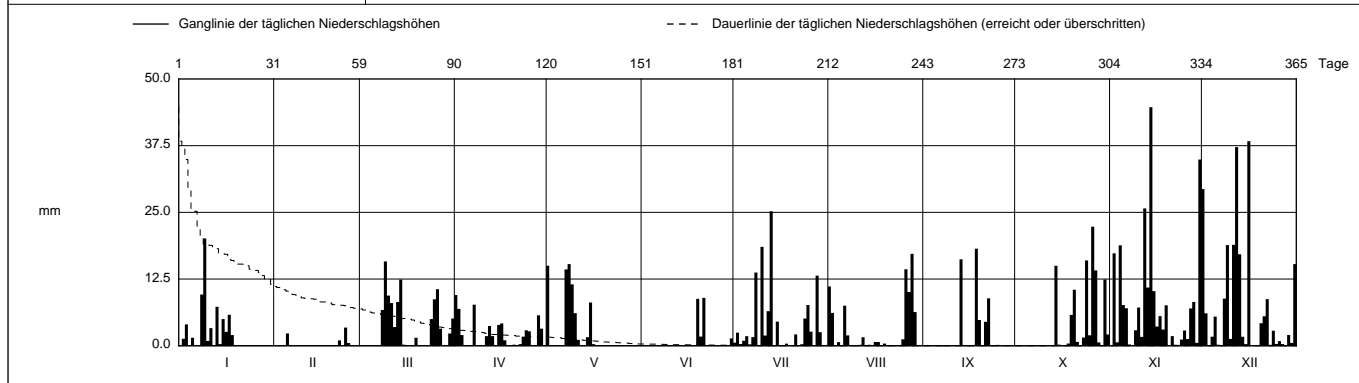
Koordinaten 2 610 210 / 1 224 460

Stations Höhe 463.0 müM

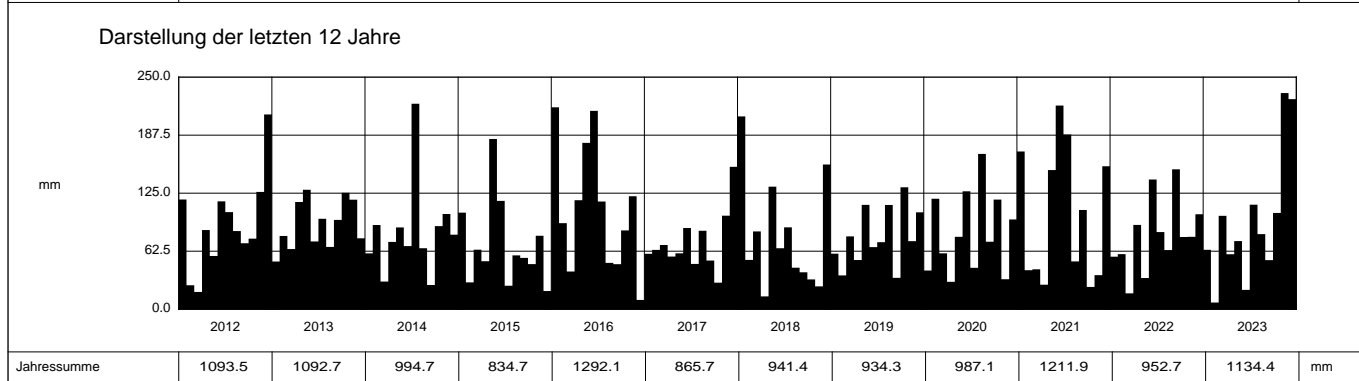
Fläche - km2

2023		Jan	Feb	Mar	Apr	Mai	Jun	Jul	Aug	Sep	Okt	Nov	Dez			
1		0	0	0	9.5 +	15.0	0	0.6	11.1	0	0.1	0	29.4	1		
2		1.3	0	0	6.9	0	0	2.5	6.2	0	0	17.3	6.1	2		
3		4.0	0	0	2.0	0	0	0.3	0	0	0	0.6	0	3		
4		0.1	0	0	0	0	0	0.9	0.7	0	0	18.8	1.7	4		
5		1.5	2.3	0	0	0	0	1.8	0.1	0	0	7.6	5.5	5		
Tägliche Niederschlags-höhen																
6		0.1	0	0	0	0	0	0.3	7.5	0	0	7.0	0.2	6		
7		0	0	0	7.7	14.3	0	1.6	1.9	0	0	0.2	0	7		
8		9.6	0	6.7	0	15.3 +	0	13.7	0	0	0	0.1	8.8	8		
9		20.1 +	0	15.8 +	0	11.5	0	0.1	0	0	0	2.9	18.9	9		
10		0.9	0	9.4	0	6.1	0	18.5	0.1	0	0	7.2	1.3	10		
11		3.3	0	8.0	1.8	1.1	0	1.9	0.2	0	0	1.7	18.9	11		
12		0	0	3.5	3.7	0.1	0	6.5	1.6	0	0	25.7	37.2	12		
13		7.3	0	8.2	1.8	0	0	25.2 +	0.1	16.2	0	10.9	17.1	13		
14		0.3	0	12.4	0	1.6	0	0.1	0.2	0	15.0	44.7 +	1.7	14		
15		5.0	0	0.2	3.9	8.1	0	4.5	0	0	0.2	10.2	0.3	15		
mm																
16		2.6	0	0	4.2	0.3	0	0	0.7	0	0	3.6	38.3 +	16		
17		5.8	0	0	1.0	0	0	0	0.7	0.2	0	5.6	0	17		
18		2.0	0	0	0	0	0	0.4	0.1	18.2 +	0.4	3.0	0	18		
19		0	0	1.5	0	0	8.8	0	0.4	4.8	5.8	7.6	0	19		
20		0	0	0	0.2	0	1.7	0	0	0	10.5	0	4.2	20		
21		0	0	0	0	0	9.0 +	2.1	0	4.5	0.7	1.8	5.5	21		
22		0.1	1.0	0	0.3	0	0	0.1	0.1	8.9	0	0.2	8.7	22		
23		0	0	0	1.7	0	0	0.3	0.1	0	1.5	0.2	0.2	23		
+ Maximum																
24		0	3.4 +	5.0	2.9	0	0	5.1	0	0	16.0	1.2	2.8	24		
25		0	0.5	8.7	2.7	0	0	7.6	1.2	0.2	2.0	2.9	0.3	25		
26		0	0	10.6	0	0	0	2.6	14.3	0	22.3 +	1.3	0.9	26		
27		0	0	3.2	0	0	0	0.1	10.1	0	14.1	7.0	0.3	27		
28		0	0	0	5.7	0	0	13.1	17.2 +	0	0.6	8.2	0.1	28		
29		0	0	0	3.2	0	0	2.5	6.3	0	0	0.5	2.0	29		
30		0	0	2.3	0	0	1.4	0.1	0	0	12.4	34.9	0.5	30		
31		0	0	5.1	0	0	0	0	0.1	0	2.1	15.3	15.3	31		
Monatssumme		64.0	7.2 -	100.6	59.2	73.4	20.8	112.6	80.9	52.9	103.7	232.8 +	226.3	mm		
Niederschlagstage		11	3 -	14	15	8	4	15	10	5	10	22 +	18	Tage		
Niederschlagstage grösser oder gleich als [mm]		181 >= 0.1		77 >= 5			38 >= 10		9 >= 20		>= 50		>= 100		Tage	
Jahreswerte		Gesamtniederschlag 1134.4 mm					Niederschlagstage 135 Tage									

Ganglinie der täglichen Niederschlagshöhen		----- Dauerlinie der täglichen Niederschlagshöhen (erreicht oder überschritten)																																				
1		31			59			90			120			151			181			212			243			273			304			334			365			Tage



Periode		2007 - 2023												(17 Jahre)
Mit Monatssumme		88.6	57.1	61.2	56.9 -	98.2	104.0	107.4	90.7	68.4	72.3	82.3	122.8 +	mm
Max Tagessumme		50.7	30.2 -	37.2	34.3	84.2	60.5	74.8	108.3 +	71.8	39.6	54.5	38.4	mm
Jahr		2018	2017	2008	2013	2015	2021	2016	2007	2011	2020	2015	2011	
Periode		Max Gesamtniederschlag 1292.1 (2016)						Min Gesamtniederschlag 834.7 (2015)						mm



Niederschlag

Gemeindehaus - Gerlafingen

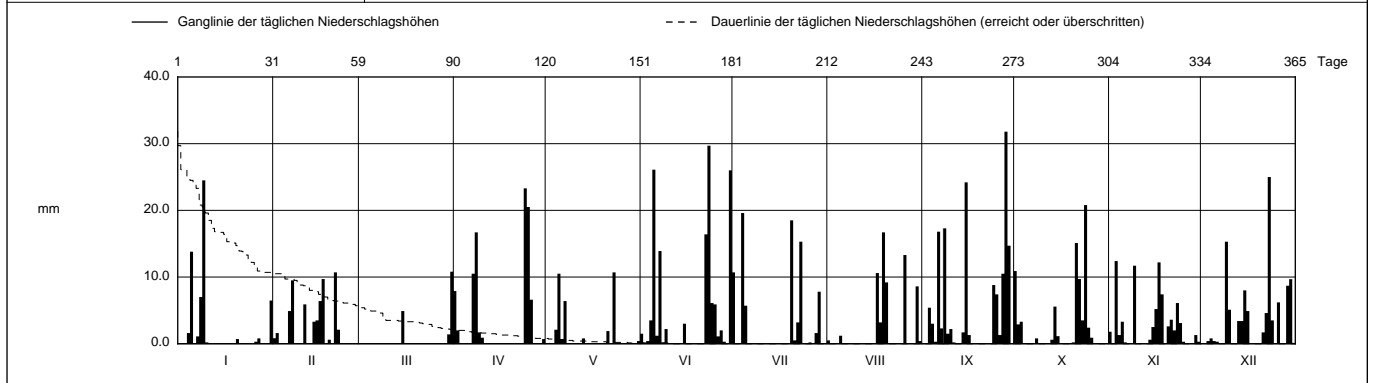
SO 610/224/030

Koordinaten 2 610 210 / 1 224 460

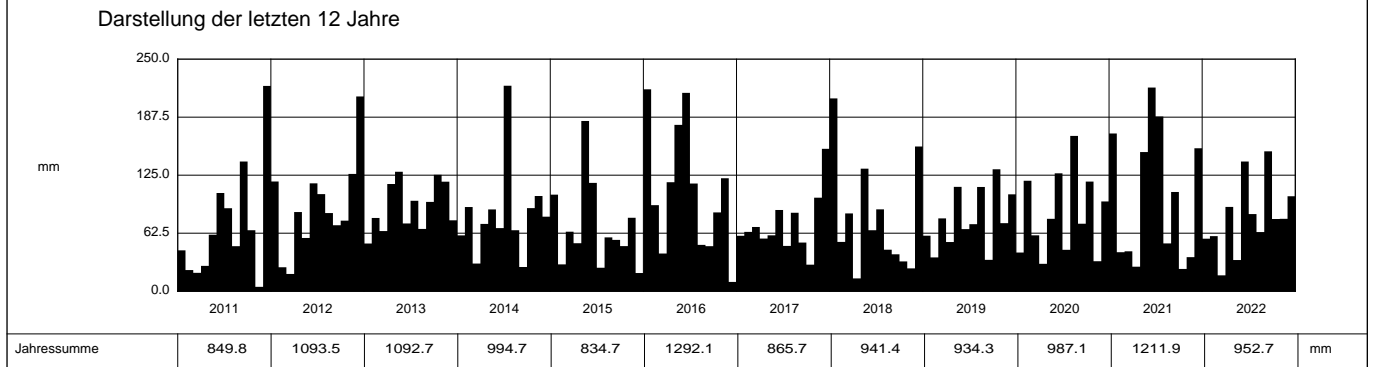
Stations Höhe 463.0 müM

Fläche - km2

2022		Jan	Feb	Mar	Apr	Mai	Jun	Jul	Aug	Sep	Okt	Nov	Dez			
1		0	0.8	0	7.9	0	1.5	10.7	0.5	0	10.9	1.8	0.1	1		
2		0	1.6	0	2.0	0	0.2	0	0	0	2.9	0	0.1	2		
3		0	0	0	0	0	0.4	0	0	5.4	3.3	12.4 +	0.4	3		
4		1.6	0	0	0	2.1	3.5	19.6 +	0	3.0	0	1.3	0.8	4		
5		13.8	0	0	0	10.5	26.1	5.7	1.2	0.3	0	3.3	0.4	5		
Tägliche Niederschlags-höhen																
6		0	4.9	0	0	0.7	1.2	0	0	16.8	0	0.2	0.3	6		
7		1.1	9.5	0	10.5	6.4	13.9	0	0	2.3	0	0	0	7		
8		7.0	0	0	16.7	0	0.2	0	0	17.3	0.8	0	0.1	8		
9		24.5 +	0	0	1.7	0	2.2	0	0	1.5	0	11.7	15.3	9		
10		0.2	0	0	0.9	0	0	0	0	2.2	0	0	5.1	10		
11		0	5.9	0	0	0	0	0	0	0.2	0	0	0.1	11		
12		0	0	0	0	0	0	0	0	0	0	0	0.1	12		
13		0	0	0	0	0.8	0	0	0	0	0.6	0	3.4	13		
14		0	3.3	0	0	0	0	0	0	1.7	5.6	0.6	3.4	14		
15		0	3.5	4.9	0	0	3.0	0	0	24.2	1.1	2.5	8.0	15		
mm																
16		0	6.4	0	0	0	0	0	0	1.3	0	5.2	4.9	16		
17		0	9.7	0	0	0	0	0	10.6	0	0	12.2	0	17		
18		0	0	0	0	0	0	0	3.2	0	0	7.4	0	18		
19		0	0.6	0	0	0	0	0	16.7 +	0	0	0	0	19		
20		0.7	0.1	0	0	0	0	18.5	9.2	0	0.2	2.6	0.1	20		
21		0	10.7 +	0	0	1.9	0	0.5	0	0	15.1	3.6	1.7	21		
22		0	2.1	0	0	0	16.4	3.2	0	0	9.7	2.0	4.6	22		
23		0	0.1	0	0	10.7 +	29.7 +	15.3	0	0	3.5	6.1	25.0 +	23		
+ Maximum																
24		0	0	0	23.3 +	0.1	6.1	0	0	8.8	20.8 +	3.1	3.5	24		
25		0.1	0.1	0	20.5	0	5.9	0	0	7.4	2.4	0.3	0.1	25		
26		0.3	0	0	6.6	0	1.1	0.2	13.3	1.3	0.9	0	6.2	26		
27		0.8	0	0	0	0	2.0	0	0	10.5	0	0	0.1	27		
28		0	0	0	0	0	0.3	1.6	0	31.8 +	0	0.1	0	28		
29		0	0	0	0	0	0	7.8	0	14.7	0	1.3	8.7	29		
30		0	0	1.4	0.7	0	26.0	0	8.6	0	0	0.3	9.7	30		
31		6.5	0	10.8 +	0	0.4	0	0	0.4	0	0	0	0.1	31		
Monatssumme		56.6	59.3	17.1 -	90.8	33.6	139.7	83.1	63.7	150.7 +	77.8	78.0	102.3	mm		
Niederschlagstage		6	10	3 -	8	5	14	8	7	16 +	10	15	13	Tage		
Niederschlagstage grösser oder gleich als [mm]		162 >= 0.1		64 >= 5			36 >= 10		10 >= 20		>= 50		>= 100		Tage	
Jahreswerte		Gesamtniederschlag 952.7 mm					Niederschlagstage 115 Tage									



Periode	2007 - 2022												(16 Jahre)
Mit Monatssumme	90.1	60.2	58.7	56.8 -	99.8	109.2	107.1	91.3	69.4	70.3	72.9	116.4 +	mm
Max Tagessumme Jahr	50.7 2018	30.2 - 2017	37.2 2008	34.3 2013	84.2 2015	60.5 2021	74.8 2016	108.3 + 2007	71.8 2011	39.6 2020	54.5 2015	38.4 2011	mm
Periode	Max Gesamtniederschlag 1292.1 (2016)						Min Gesamtniederschlag 834.7 (2015)						mm



Jahressumme	849.8	1093.5	1092.7	994.7	834.7	1292.1	865.7	941.4	934.3	987.1	1211.9	952.7	mm
--------------------	-------	--------	--------	-------	-------	--------	-------	-------	-------	-------	--------	-------	----

Niederschlag

Gemeindehaus - Gerlafingen

SO 610/224/030

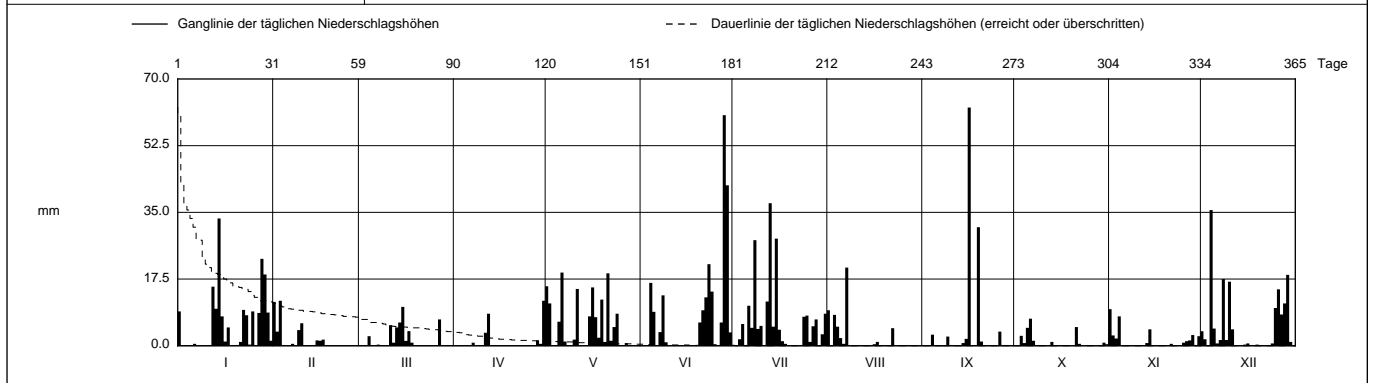
Koordinaten 2 610 210 / 1 224 460

Stations Höhe 463.0 müM

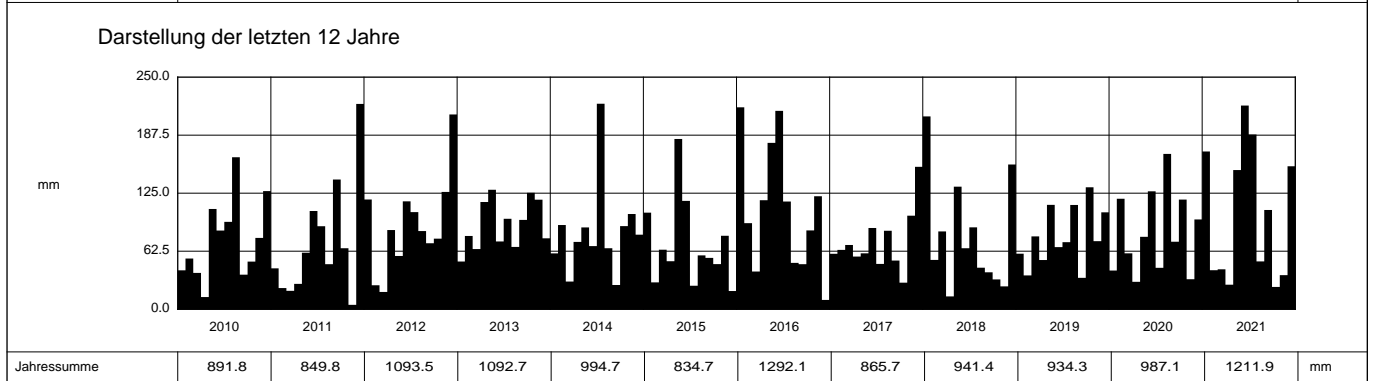
Fläche - km2

2021	Jan	Feb	März	April	Mai	Juni	Juli	Aug	Sept	Okt	Nov	Dez	
1	9.0	11.5	0	0	15.6	0	0.2	9.3	0	0	9.6 +	3.8	1
2	0	3.7	0	0	11.1	0	0	0	0	0	2.7	1.7	2
3	0.1	11.8 +	0	0	0	0	1.7	8.1	0	2.6	1.9	0	3
4	0	0.2	2.5	0	0	16.5	5.7	5.0	2.9	0.7	7.7	35.6 +	4
5	0	0	0.1	0	6.3	8.9	0.2	2.0	0	4.7	0	4.5	5
Tägliche Niederschlags-höhen													
6	0.5	0	0	0	19.2 +	0	10.5	0.5	0	7.1 +	0	0.6	6
7	0	0.5	0.3	0.8	1.1	3.6	4.7	20.5 +	0	1.3	0	1.5	7
8	0	0	0	0	0	13.2	27.7	0	0	0	0	17.5	8
9	0	4.1	0	0	0	0.9	4.4	0	2.4	0	0	1.5	9
10	0	5.9	0	0.1	1.6	0	5.2	0	0.2	0	0	16.8	10
11	0	0	5.4	3.4	14.9	0	0	0	0	0	0.1	4.3	11
12	15.5	0	0.8	8.4	0	0	11.6	0	0	0	0.1	0	12
13	9.7	0	4.8	0	0.1	0	37.4 +	0	0	1.0	0.7	0	13
14	33.4 +	0	6.1	0	0	0	5.0	0	0.7	0	4.3	0	14
15	7.7	1.4	10.2 +	0	7.7	0	28.1	0	1.8	0	0	0.3	15
mm													
16	1.1	1.3	1.3	0	15.3	0	4.2	0.4	62.5 +	0	0	0.6	16
17	4.8	1.6	3.8	0	7.5	0	1.2	1.0	0	0	0	0.2	17
18	0	0	0.8	0	2.1	0	0.5	0	0	0	0	0.1	18
19	0.1	0	0	0	12.1	0	0	0	31.1	0	0	0.3	19
20	0.2	0	0	0	1.0	6.1	0	0	1.1	0	0.1	0.2	20
21	1.0	0	0	0	19.0	9.3	0	0	0	4.9	0.5	0.1	21
22	9.4	0	0	0	1.3	12.7	0	4.6	0	0.5	0.1	0.1	22
23	8.0	0	0	0	4.9	21.4	0	0	0	0	0	0.1	23
+ Maximum													
24	0.3	0	0	0	8.4	14.2	7.6	0	0	0	0	0.6	24
25	9.0	0	0	0	0	0.4	7.9	0	0	0	0.8	9.9	25
26	0	0	0	0	0	0	1.0	0	3.7	0	1.2	14.8	26
27	8.6	0	6.9	0	0.7	6.1	5.1	0	0.2	0	1.4	8.2	27
28	22.8	0	0	1.4	0	60.5 +	6.9	0	0.2	0	2.8	11.1	28
29	18.7	0	0	0.5	0	42.1	0	0.1	0.1	0	0.2	18.6	29
30	8.7	0	0	11.8 +	0	3.5	3.0	0	0	0.8	2.5	1.0	30
31	1.3	0	0	0	0	0	8.4	0	0	0.4	0	0	31

Monatssumme	169.9	42.0	43.0	26.4	149.9	219.4 +	188.2	51.5	106.9	24.0 -	36.7	154.0	mm	
Niederschlagstage	16	8	8	4 -	17	13	20 +	7	7	6	9	15	Tage	
Niederschlagstage grösser oder gleich als [mm]	182 >= 0.1		73 >= 5			36 >= 10		12 >= 20		2 >= 50		>= 100		Tage
Jahreswerte	Gesamtniederschlag 1211.9 mm					Niederschlagstage 130 Tage								



Periode	2007 - 2021											(15 Jahre)	
Mit Monatssumme	92.4	60.2	61.5	54.5 -	104.2	107.2	108.7	93.2	64.0	69.8	72.5	117.3 +	mm
Max Tagessumme Jahr	50.7 2018	30.2 - 2017	37.2 2008	34.3 2013	84.2 2015	60.5 2021	74.8 2016	108.3 + 2007	71.8 2011	39.6 2020	54.5 2015	38.4 2011	mm
Periode	Max Gesamtniederschlag 1292.1 (2016)					Min Gesamtniederschlag 834.7 (2015)							mm



Jahressumme	891.8	849.8	1093.5	1092.7	994.7	834.7	1292.1	865.7	941.4	934.3	987.1	1211.9	mm
-------------	-------	-------	--------	--------	-------	-------	--------	-------	-------	-------	-------	--------	----

Niederschlag

Gemeindehaus - Gerlafingen

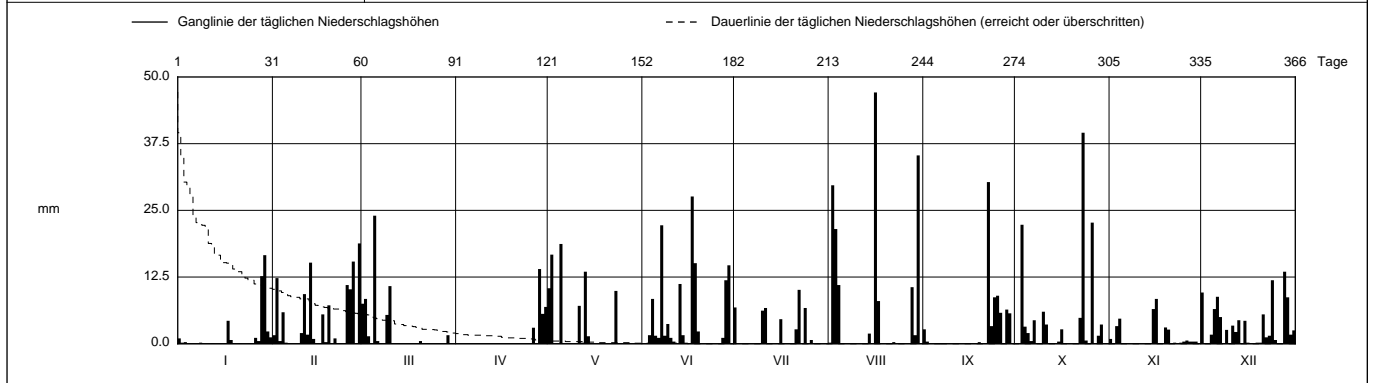
SO 610/224/030

Koordinaten 2 610 210 / 1 224 460

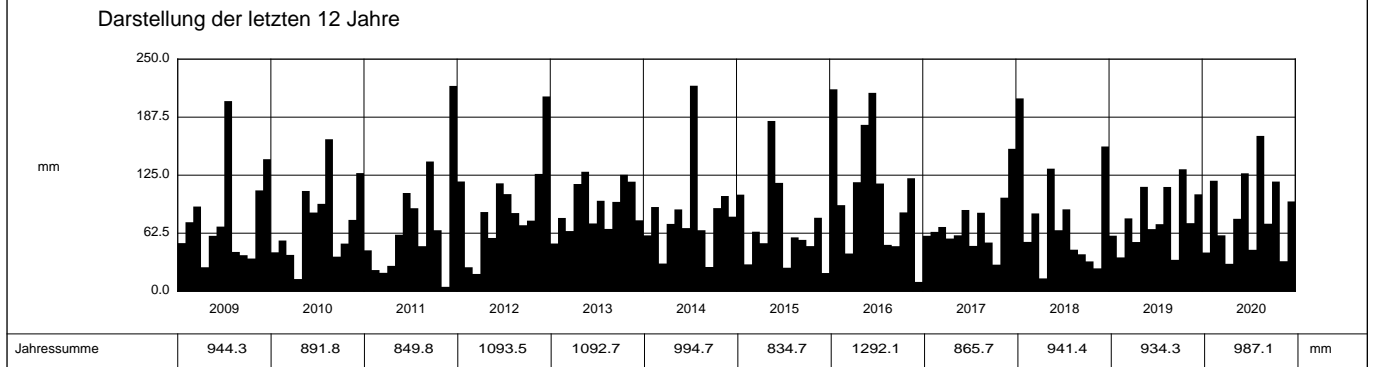
Stations Höhe 463.0 mÜM

Fläche - km2

2020	Jan	Feb	März	April	Mai	Juni	Juli	Aug	Sept	Okt	Nov	Dez	
1	1.0	1.6	7.5	0	10.4	0	6.8	0.2	2.7	0.1	0.9	9.6	1
2	0.2	12.3	8.4	0	16.7	0	0	29.7	0.4	0	0	0.1	2
3	0.3	0.5	1.4	0	0	1.6	0	21.5	0	22.3	3.3	0	3
4	0.1	5.9	0	0	0	8.4	0	11.0	0	3.2	4.7	1.7	4
5	0	0.2	24.0 +	0	18.7 +	1.5	0	0	0	2.0	0	6.5	5
Tägliche Niederschlags-höhen													
6	0	0	0.5	0	0	1.1	0	0	0	0.5	0	8.8	6
7	0	0	0	0	0	22.2	0	0	0	4.4	0	5.0	7
8	0.2	0	0	0	0	1.5	0	0	0	0	0	0.1	8
9	0	0	5.4	0	0	3.7	0	0	0	0	0	2.6	9
10	0	2.0	10.8	0	0.1	1.1	6.2	0	0	6.0	0	0.0	10
11	0	9.3	0	0	7.1	0.4	6.7	0	0	3.6	0	3.4	11
12	0.1	1.7	0	0	0.2	0	0	0	0	0	0	2.2	12
13	0	15.2	0	0	13.5	11.2	0	0	0	0	0	4.4	13
14	0	0.9	0	0	1.4	1.6	0	1.9	0	0	0	0	14
15	0	0	0	0	0	0	0.1	0	0	0.4	6.5	4.3	15
mm													
16	0	0	0	0	0	0	4.6	47.1 +	0	2.7	8.4 +	0.2	16
17	4.3	5.5	0	0	0	27.6 +	0	8.0	0	0.1	0	0.1	17
18	0.7	0.3	0	0	0	15.1	0	0.1	0	0	0	0.1	18
19	0.1	7.2	0	0	0	2.3	0	0	0.3	0	3.1	0.2	19
20	0	0	0.5	0	0	0	0	0	0	0	2.7	0.2	20
21	0.1	1.0	0	0	0	0	2.7	0	0	0	0.1	5.5	21
22	0	0	0	0	0	0	10.1 +	0.3	30.3 +	4.9	0.2	1.2	22
23	0	0	0	0	9.9	0	0	0	3.3	39.6 +	0.1	1.5	23
+ Maximum													
24	0.1	0	0	0	0	0	6.7	0	8.7	0.6	0.2	11.9	24
25	0.1	11.0	0	0	0	0	0	0	9.0	0	0.4	0.7	25
26	1.1	10.2	0	3.0	0	0	0.7	0	5.8	22.7	0.6	0	26
27	0.5	15.4	0	0	0	1.1	0	0	0.1	0	0.4	0	27
28	12.7	0	0	14.0 +	0	11.9	0	10.6	6.4	1.5	0.4	13.5 +	28
29	16.6 +	18.8 +	1.6	5.6	0	14.7	0	1.6	5.7	3.6	0.4	8.7	29
30	2.3	0	0.1	6.9	0	0	0	35.3	0	0	0	1.7	30
31	1.2	0	0	0	0	0	0	0	0	0	0	2.5	31
Monatssumme	41.7	119.0	60.2	29.5 -	78.0	127.0	44.6	167.3 +	72.7	118.1	32.3	96.7	mm
Niederschlagstage	7	14	7	4 -	7	16	7	9	8	12	6	18 +	Tag
Niederschlagstage grösser oder gleich als [mm]			167 >= 0.1	65 >= 5	34 >= 10	11 >= 20	>= 50		>= 100				Tag
Jahreswerte			Gesamtniederschlag 987.1 mm				Niederschlagstage 115 Tage						



Periode	2007 - 2020											(14 Jahre)	
Mit Monatssumme	86.8	61.5	62.8	56.5 -	100.9	99.2	103.0	96.1	60.9	73.1	75.1	114.7 +	mm
Max Tagessumme	50.7	30.2 -	37.2	34.3	84.2	45.4	74.8	108.3 +	71.8	39.6	54.5	38.4	mm
Jahr	2018	2017	2008	2013	2015	2016	2016	2007	2011	2020	2015	2011	
Periode	Max Gesamtniederschlag 1292.1 (2016)						Min Gesamtniederschlag 834.7 (2015)						mm



Jahressumme	944.3	891.8	849.8	1093.5	1092.7	994.7	834.7	1292.1	865.7	941.4	934.3	987.1	mm
-------------	-------	-------	-------	--------	--------	-------	-------	--------	-------	-------	-------	-------	----

Niederschlag

Gemeindehaus - Gerlafingen

SO 610/224/030

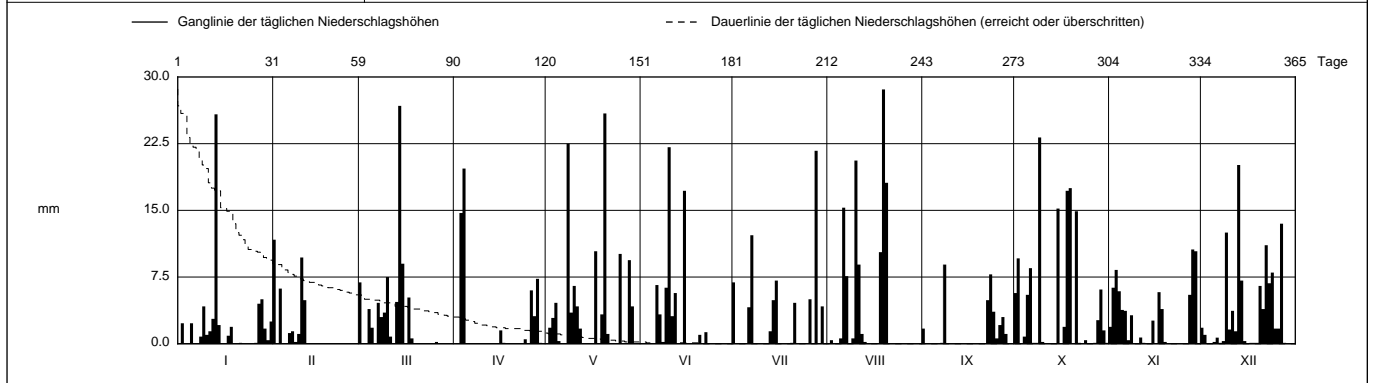
Koordinaten 2 610 210 / 1 224 460

Stations Höhe 463.0 müM

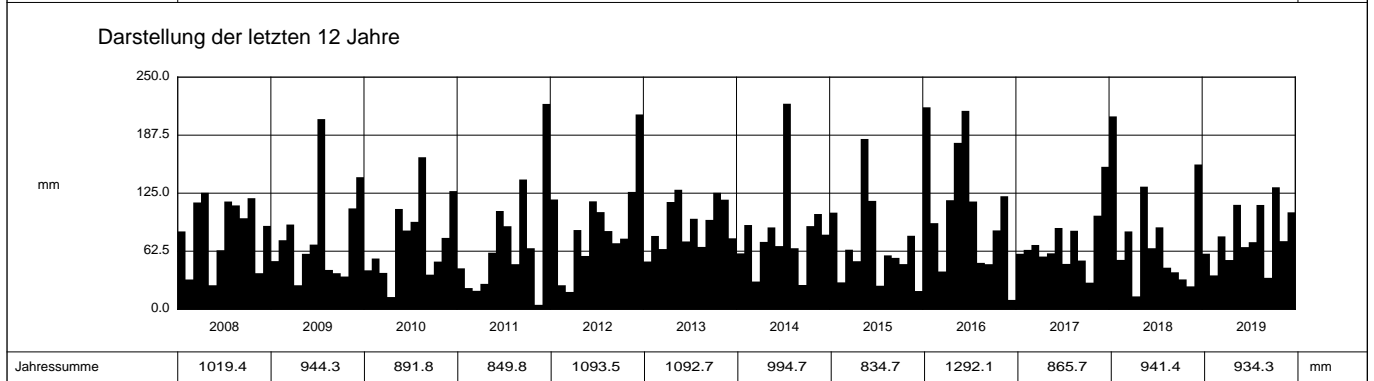
Fläche - km2

2019	Jan	Feb	März	April	Mai	Juni	Juli	Aug	Sept	Okt	Nov	Dez	
1	0	11.7 +	6.9	0	0	0	6.9	0	1.7	5.7	1.9	1.8	1
2	2.3	0	0	0	1.8	0	0	0.4	0	9.6	6.3	1.0	2
3	0	6.2	0	14.7	2.9	0	0	0	0	0	8.3	0	3
4	0	0	3.9	19.7 +	4.6	0	0	0	0	0.8	5.9	0	4
5	2.3	0	1.8	0	0.3	0	0	0.6	0	5.5	3.8	0.2	5
Tägliche Niederschlags-höhen													
6	0	1.2	0	0	0	6.6	4.1	15.3	0	8.5	3.7	0.7	6
7	0	1.4	4.6	0	0	3.3	12.2	7.6	0.1	0.1	0.4	0.1	7
8	0.8	0.2	3.0	0	22.5	0.2	0	0	8.9 +	0.1	3.2	0.3	8
9	4.2	1.1	3.5	0	3.5	6.3	0	0.6	0	23.2 +	0	12.5	9
10	1.0	9.7	7.5	0	6.5	22.1 +	0	20.6	0	0.2	0	1.6	10
11	1.4	4.9	0.8	0	4.2	3.1	0	8.9	0	0	0.7	3.7	11
12	2.8	0	0	0	1.7	5.7	0	1.1	0	0	0.1	1.4	12
13	25.8 +	0	4.7	0	0	0	1.4	0.2	0	0	0	20.1 +	13
14	2.1	0	26.8 +	0	0	0.1	4.9	0	0	0	0	7.1	14
15	0	0	9.0	0	0	17.2	7.1	0	0	15.2	2.6	0.3	15
mm													
16	0	0	0	1.5	0	0	0	0	0	0	0	0	16
17	0.9	0	5.2	0.1	10.4	0	0	0	1.9	5.8	0.1	17	17
18	1.9	0	0.6	0	0	0	0	10.3	0	17.2	3.9	0.1	18
19	0	0	0	0	3.3	0	0	28.6 +	0	17.5	0.2	0.1	19
20	0	0	0	0	25.9 +	1.0	0.1	18.1	0	0	0	6.5	20
21	0.1	0	0	0	1.1	0	4.6	0	0	14.9	0	3.9	21
22	0	0	0	0	0	1.3	0	0	4.9	0.1	0	11.1	22
23	0	0	0	0	0	0	0	0	7.8	0	0	6.8	23
+ Maximum													
24	0	0	0	0.5	0	0	0	0	3.6	0.4	0	8.0	24
25	0	0	0	0	10.1	0	0	0	0.6	0	0	1.7	25
26	0.1	0	0.2	6.0	0	0	5.0	0	2.1	0	0	1.7	26
27	4.5	0	0	3.1	0	0	0	0	3.0	0.1	5.5	13.5	27
28	5.0	0	0	7.3	9.4	0	21.7 +	0	1.1	2.7	10.6 +	0.1	28
29	1.7	0	0	0.1	4.2	0	0	0	0	6.1	10.4	0	29
30	0.4	0	0	0	0	0	4.2	0	0	1.5	0	0	30
31	2.5	0	0	0	0	0	0	0	0	0.1	0	0	31

Monatssumme	59.8	36.4	78.5	53.0	112.4	66.9	72.2	112.3	33.8 -	131.4 +	73.3	104.4	mm	
Niederschlagstage	13	7	11	6 -	15	9	10	8	8	13	13	16 +	Tage	
Niederschlagstage grösser oder gleich als [mm]	172 >= 0.1		64 >= 5			29 >= 10		10 >= 20		>= 50		>= 100		Tage
Jahreswerte	Gesamtniederschlag 934.3 mm					Niederschlagstage 129 Tage								



Periode	2007 - 2019											(13 Jahre)	
Mit Monatssumme	90.3	57.1 -	63.0	58.6	102.7	97.0	107.5	90.7	60.0	69.6	78.4	116.1 +	mm
Max Tagessumme Jahr	50.7 2018	30.2 - 2017	37.2 2008	34.3 2013	84.2 2015	45.4 2016	74.8 2016	108.3 + 2007	71.8 2011	38.4 2008	54.5 2015	38.4 2011	mm
Periode	Max Gesamtniederschlag 1292.1 (2016)					Min Gesamtniederschlag 834.7 (2015)							mm



Jahressumme	1019.4	944.3	891.8	849.8	1093.5	1092.7	994.7	834.7	1292.1	865.7	941.4	934.3	mm
-------------	--------	-------	-------	-------	--------	--------	-------	-------	--------	-------	-------	-------	----

Niederschlag

Gemeindehaus - Gerlafingen

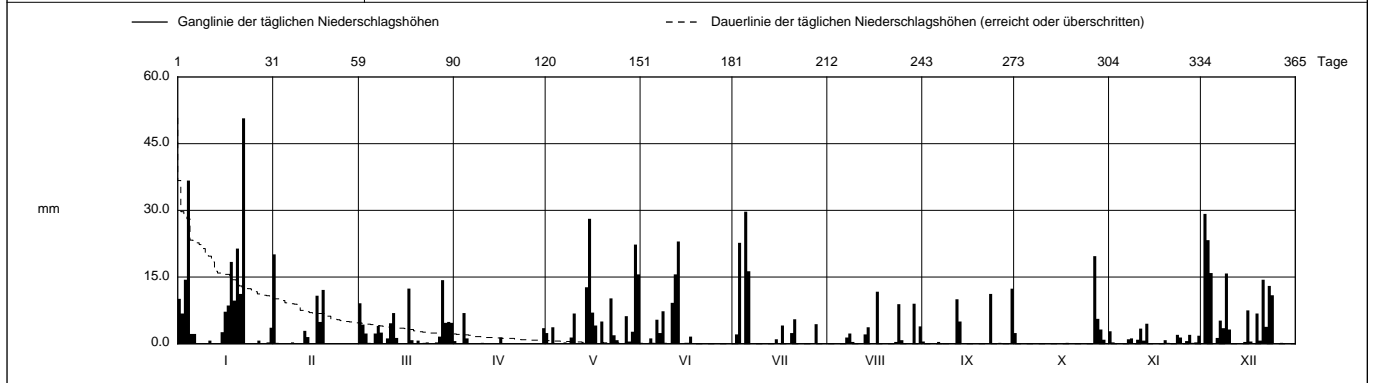
SO 610/224/030

Koordinaten 2 610 210 / 1 224 460

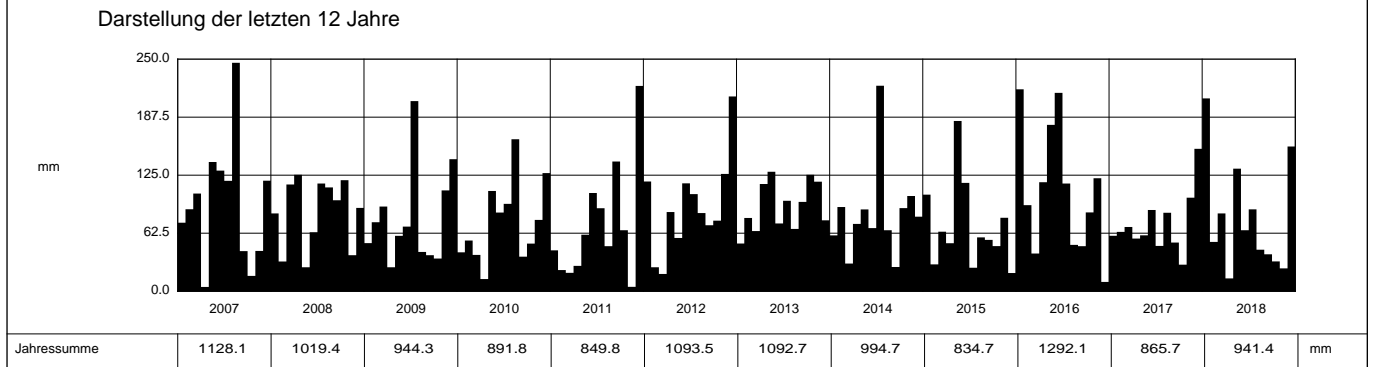
Stations Höhe 463.0 müM

Fläche - km2

2018		Jan	Feb	März	April	Mai	Juni	Juli	Aug	Sept	Okt	Nov	Dez		
1		10.1	20.1 +	9.1	0.6	2.4	0	0	0	0.5	2.4	2.8	0.1	1	
2		6.8	0.2	4.3	0	0.1	0	2.1	0	0	0	0.3	29.2 +	2	
3		14.4	0	2.3	0	3.7	0	22.7	0	0	0	0	23.3	3	
4		36.7	0	0.2	6.9 +	0	1.2	0	0	0	0	0.1	15.9	4	
5		2.2	0	0.1	1.2	0	0	29.7 +	0	0	0	0	0	5	
Tägliche Niederschlags-höhen															
6		2.2	0	2.3	0	0	5.4	16.3	0	0.4	0	0.1	1.3	6	
7		0	0.3	4.0	0	0.3	2.4	0	1.4	0	0	1.0	5.2	7	
8		0	0.1	2.5	0	0	7.3	0	2.3	0	0	1.2	3.5	8	
9		0.1	0	0	0	1.4	0	0	0.4	0	0	0	15.8	9	
10		0	0.1	1.2	0.2	6.8	0	0	0.1	0	0	0.9	3.2	10	
11		0.7	2.9	4.6	0	0	9.2	0	0	0	0	3.4	0.1	11	
12		0	1.5	6.9	0	0	15.6	0	0	10.0	0	0.7	0	12	
13		0	0	1.3	0	0.2	23.0 +	0	2.1	5.0	0	4.5 +	0.1	13	
14		0	0.1	0	0	12.7	0	0	3.7	0	0	0	0	14	
15		2.6	10.8	0	0	28.1 +	0	1.0	0	0	0	0	0.4	15	
mm															
16		7.2	4.9	0.1	1.4	7.0	0	0	0	0	0	0	7.5	16	
17		8.6	12.1	12.4	0	4.1	1.6	4.1	11.7 +	0	0	0	0.5	17	
18		18.4	0	0.8	0	0	0	0	0	0	0.2	0	0	18	
19		9.7	0	0	0	5.0	0	0	0	0	0	0.8	6.8	19	
20		21.4	0	0.7	0	0	0	2.4	0	0	0	0.2	0.7	20	
21		11.2	0	0	0	0	0	5.5	0	0	0	0.1	14.4	21	
22		50.7 +	0	0.2	0	10.2	0	0	0	0.1	0	0.1	3.8	22	
23		0	0	0.3	0	1.9	0	0	0.4	11.2	0	2.0	13.0	23	
+ Maximum															
24		0	0	0	0	0.8	0	0	8.9	0	0	1.4	10.9	24	
25		0	0	0	0	0	0	0	0.8	0	0	0.1	0	25	
26		0.1	0	0.3	0	0	0	0	0	0.2	0	0.6	0	26	
27		0.7	0	1.6	0	6.2	0	0	0	0	19.7 +	2.0	0.2	27	
28		0	0	14.3 +	0	0.5	0	4.4	0	0	5.6	0.2	0	28	
29		0	0	4.7	0	2.7	0	0	9.0	0	3.2	0.3	0	29	
30		0.3	0	4.9	3.5	22.3	0	0	0	12.4 +	0.9	1.8	0	30	
31		3.6	0	4.7	0	15.6	0	0	3.9	0	0.1	0	0	31	
Monatssumme		207.7 +	53.1	83.8	13.8 -	132.0	65.7	88.2	44.7	39.8	32.1	24.6	155.9	mm	
Niederschlagstage		15	6	16 +	4 -	15	8	9	8	4 -	4 -	9	14	Tage	
Niederschlagstage grösser oder gleich als [mm]		168 >= 0.1		56 >= 5			34 >= 10		11 >= 20		1 >= 50		>= 100		Tage
Jahreswerte		Gesamtniederschlag 941.4 mm					Niederschlagstage 112 Tage								



Periode	2007 - 2018 (12 Jahre)												
Mit Monatssumme	92.8	58.8 -	61.8	59.1	101.9	99.5	110.4	88.9	62.2	64.4	78.8	117.1 +	mm
Max Tagessumme Jahr	50.7 2018	30.2 - 2017	37.2 2008	34.3 2013	84.2 2015	45.4 2016	74.8 2016	108.3 + 2007	71.8 2011	38.4 2008	54.5 2015	38.4 2011	mm
Periode	Max Gesamtniederschlag 1292.1 (2016)						Min Gesamtniederschlag 834.7 (2015)						mm



Jahressumme	1128.1	1019.4	944.3	891.8	849.8	1093.5	1092.7	994.7	834.7	1292.1	865.7	941.4	mm
--------------------	--------	--------	-------	-------	-------	--------	--------	-------	-------	--------	-------	-------	----

Niederschlag

Gemeindehaus - Gerlafingen

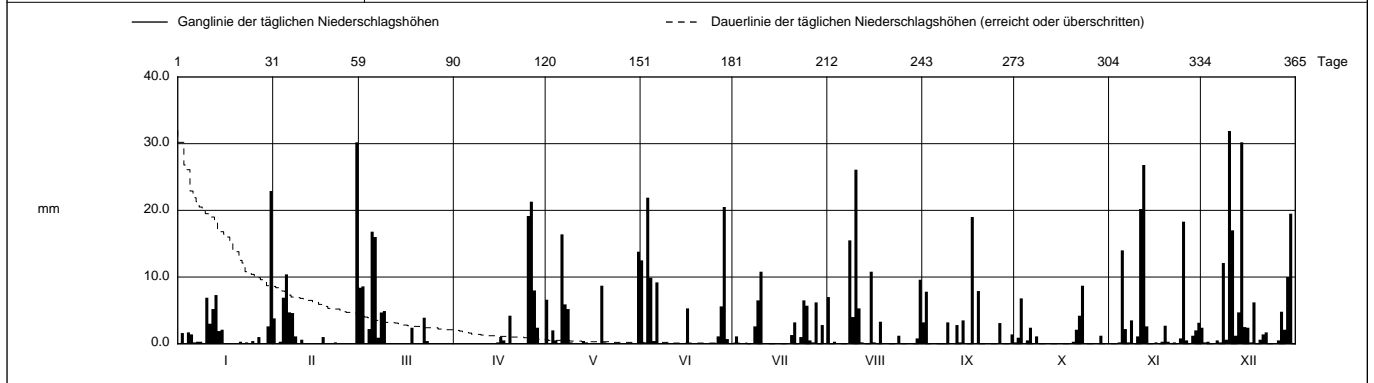
SO 610/224/030

Koordinaten 2 610 210 / 1 224 460

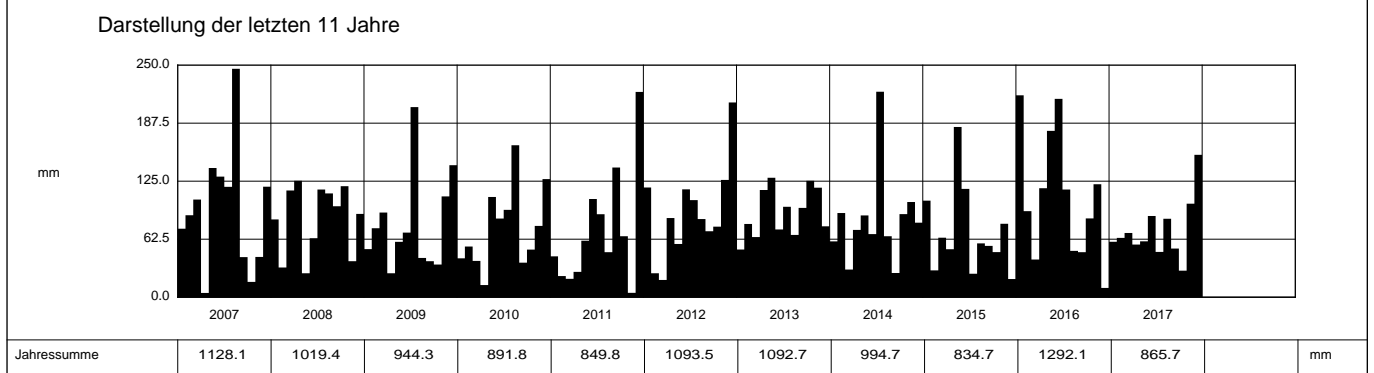
Stations Höhe 463.0 mÜM

Fläche - km2

2017	Jan	Feb	März	April	Mai	Juni	Juli	Aug	Sept	Okt	Nov	Dez	
1	0.1	3.8	8.4	0	6.6	12.5	0	7.0	3.2	0.2	0	2.4	1
2	1.6	0	8.6	0	0	0.2	1.1	0.1	7.8	0.9	0.1	0.2	2
3	0	0.3	0	0	2.0	21.9 +	0	0.3	0	6.8	0	0.3	3
4	1.7	6.9	2.2	0	0.5	9.9	0	0	0	0	0.2	0.1	4
5	1.4	10.4	16.8 +	0	0	0.4	0	0	0	0.5	14.0	0.1	5
Tägliche Niederschlags-höhen													
6	0.2	4.7	16.0	0	16.4 +	9.2	0	0	0	2.4	2.2	0.5	6
7	0.3	4.6	0.9	0	5.9	0.1	0	0	0	0	0.2	0.2	7
8	0.3	1.1	4.7	0	5.2	0	2.6	15.5	0	1.1	3.5	12.1	8
9	0	0	4.9	0	0.2	0	6.5	4.0	3.2	0	0	0.6	9
10	6.9	0.6	0	0	0	0	10.8 +	26.1 +	0	0	1.1	31.9 +	10
11	3.0	0	0	0	0	0	0.1	5.3	0	0	20.2	17.0	11
12	5.2	0	0	0	0	0	0.1	0.2	2.8	0	26.8 +	1.2	12
13	7.3	0	0	0	0.4	0	0	0	0.2	0	2.6	4.7	13
14	1.9	0	0	0	0.2	0	0.1	0	3.5	0	0	30.2	14
15	2.1	0.1	0	0.2	0	0.1	0	10.8	0.1	0	0	2.5	15
mm													
16	0	0	0	1.0	0	5.3	0	0.2	0.1	0	0.2	2.4	16
17	0	1.0	0	0.5	0	0	0	0	19.0 +	0	0.1	0.2	17
18	0.1	0	2.4	0	0	0	0	3.3	0.1	0	0.3	6.2	18
19	0	0	0	4.2	8.7	0	0	0	7.9	0	2.7	0	19
20	0	0	0	0	0.2	0	1.3	0	0	0.3	0.3	0.6	20
21	0.3	0.2	0	0	0	0	3.2	0	0	2.1	0.1	1.4	21
22	0	0	3.9	0	0	0	0.1	0	0	4.2	0.2	1.7	22
23	0.2	0	0.4	0	0	0	1.0	0	0	8.7 +	0	0	23
+ Maximum													
24	0.1	0	0	0	0	0	6.5	1.2	0	0	0.8	0	24
25	0.4	0	0	19.2	0	0	5.7	0	0	0	18.3	0	25
26	0	0	0	21.3 +	0	1.1	0.5	0	3.1	0	0.5	0.5	26
27	1.0	0	0	8.0	0	5.6	0.2	0.1	0	0.1	0	4.8	27
28	0	30.2 +	0	2.4	0	20.5	6.2	0	0	0.1	1.2	2.1	28
29	0.1	0	0	0	0.1	0.7	0	0	0	1.2	2.0	10.0	29
30	2.6	0	0	0	0	0	2.8	0.8	1.4	0	3.2	19.5	30
31	22.9 +	0	0	0	13.8	0	0	9.6	0	0	0	0	31
Monatssumme	59.7	63.9	69.2	56.7	60.2	87.5	48.8	84.5	52.4	28.6 -	100.8	153.4 +	mm
Niederschlagstage	12	8	9	6 -	7	8	11	9	9	7	12	16 +	Tag
Niederschlagstage grösser oder gleich als [mm]			186 >= 0.1	54 >= 5	27 >= 10	10 >= 20	>= 50	>= 100					Tag
Jahreswerte			Gesamtniederschlag 865.7 mm				Niederschlagstage 114 Tage						



Periode	2007 - 2017											(11 Jahre)	
Mit Monatssumme	82.4	59.4 -	59.8	63.2	99.1	102.6	112.4	92.9	64.2	67.4	83.7	113.5 +	mm
Max Tagessumme Jahr	31.6 2012	30.2 - 2017	37.2 2008	34.3 2013	84.2 2015	45.4 2016	74.8 2016	108.3 + 2007	71.8 2011	38.4 2008	54.5 2015	38.4 2011	mm
Periode	Max Gesamtniederschlag 1292.1 (2016)						Min Gesamtniederschlag 834.7 (2015)						mm



Jahressumme	1128.1	1019.4	944.3	891.8	849.8	1093.5	1092.7	994.7	834.7	1292.1	865.7	mm
--------------------	---------------	---------------	--------------	--------------	--------------	---------------	---------------	--------------	--------------	---------------	--------------	-----------

Niederschlag

Gemeindehaus - Gerlafingen

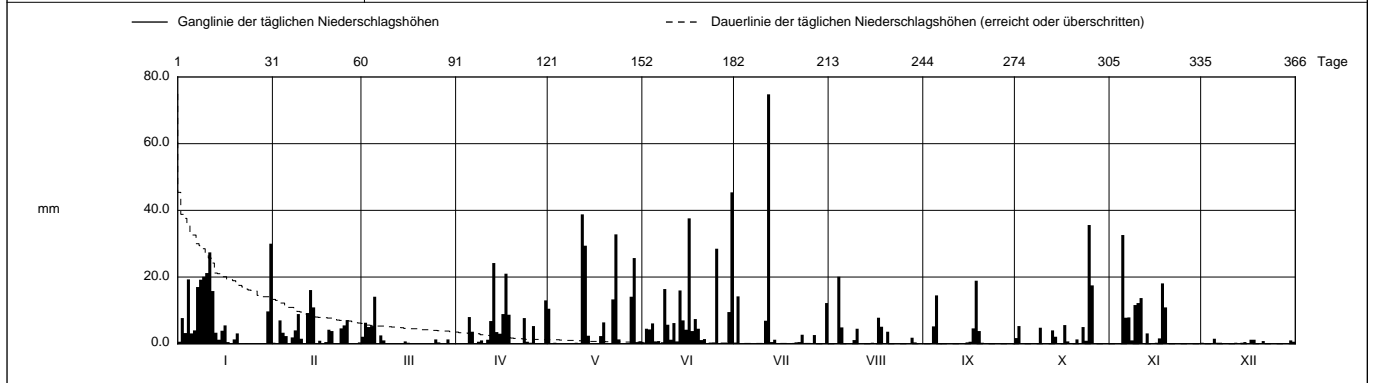
SO 610/224/030

Koordinaten 2 610 210 / 1 224 460

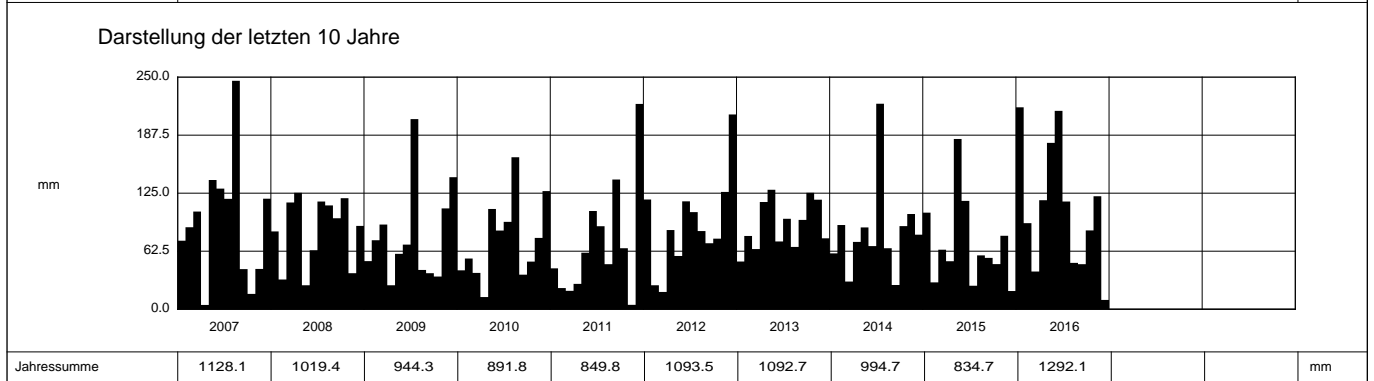
Stations Höhe 463.0 müM

Fläche - km2

2016		Jan	Feb	März	April	Mai	Juni	Juli	Aug	Sept	Okt	Nov	Dez		
Tägliche Niederschlags-höhen	1	0.6	0.3	2.1	0	10.5	0.4	0	0	0	1.7	0	0.3	1	
	2	7.7	0	6.3	0	0.1	4.5	14.2	0	0	5.3	0	0	2	
	3	3.2	7.0	5.0	0	0.3	4.3	0	0	0	0	0	0.1	3	
	4	19.3	3.3	5.3	0	0	6.1	0	20.1 +	5.2	0	0.2	0	4	
	5	3.1	2.3	14.1 +	8.0	0	0.7	0	0	4.9	14.5	0	32.6 +	1.5 +	5
	6	4.0	0	0.1	3.6	0	0.8	0	0	0	0	7.8	0.3	6	
	7	17.0	1.9	2.5	0	0	0	0	0	0	0	7.9	0.3	7	
	8	19.2	4.0	1.0	0.6	0	16.4	0	0	0	0	1.0	0.2	8	
	9	20.1	8.9	0	1.0	0.2	5.7	0	1.1	0	4.8	11.6	0.2	9	
	10	21.2	1.5	0	0	0.3	1.2	0	4.5	0	0	12.2	0.2	10	
	11	27.4	0.1	0	1.2	0	6.2	6.9	0	0	0	13.7	0.1	11	
	12	15.8	9.2	0	6.8	38.8 +	0.7	74.8 +	0	0	0	0	0.3	12	
	13	3.3	16.1 +	0	24.2 +	29.4	16.0	0.5	0	0	4.0	3.1	0	13	
	14	1.2	10.9	0	3.5	2.4	7.0	1.2	0	0	2.1	0	0.3	14	
	15	3.9	0	0.7	3.0	0	4.2	0	0.3	0.4	0.1	0.1	0.5	15	
	mm	16	5.5	0.9	0.3	8.9	0.1	37.6	0	0	0.6	0	0.3	0	16
		17	0.5	0	0	21.0	0	3.8	0	7.8	4.6	5.6	1.6	1.2	17
		18	0.1	0.5	0	8.7	2.3	7.4	0	5.1	18.9 +	0.7	18.1	1.2	18
		19	1.3	4.2	0	0	6.4	4.5	0	0.1	3.8	0.2	10.9	0.2	19
		20	3.1	3.8	0	0	0	1.1	0	3.6	0.3	0	0.1	0	20
	+ Maximum	21	0	0.1	0	0	0	1.4	0.4	0.2	0	1.3	0	0.8	21
		22	0	0	0	0	13.3	0	0.5	0	0.1	0	0.2	0.1	22
		23	0.2	4.6	0.1	7.7	32.8	0	2.7	0	0	5.0	0	0.1	23
		24	0	5.5	0	0.6	1.3	0.3	0	0	0	0.9	0.1	0.1	24
		25	0	7.1	1.3	0.3	0	28.5	0	0	0	35.6 +	0	0	25
	26	0	0.1	0.4	5.3	0	0	0	0	0	17.5	0	0.2	26	
	27	0	0	0	0	0	0	2.6	0	0	0	0	0.1	27	
	28	0	0	0.1	0	14.1	0	0	1.8	0.1	0	0	0.1	28	
	29	0.1	0.4	1.3	0	25.7	9.5	0	0.4	0	0.1	0	0	29	
	30	9.7	0	0	13.0	0.5	45.4 +	0	0	0	0	0.2	1.0	30	
	31	30.0 +	0	0	0	0.7	0	12.2	0	0	0	0	0.6	31	
Monatssumme		217.5 +	92.7	40.6	117.4	179.2	213.7	116.0	49.9	48.5	84.9	121.7	10.0 -	mm	
Niederschlagstage		19 +	15	9	14	11	19 +	7	8	5	10	11	4 -	Tage	
Niederschlagstage grösser oder gleich als [mm]				209 >= 0.1	73 >= 5		40 >= 10		17 >= 20		1 >= 50		>= 100		Tage
Jahreswerte		Gesamtniederschlag 1292.1 mm					Niederschlagstage 132 Tage								



Periode	2007 - 2016 (10 Jahre)												
Mit Monatssumme	84.7	58.9	58.8 -	63.9	103.0	104.1	118.8 +	93.7	65.4	71.3	82.0	109.5	mm
Max Tagessumme Jahr	31.6 2012	22.8 - 2014	37.2 2008	34.3 2013	84.2 2015	45.4 2016	74.8 2016	108.3 + 2007	71.8 2011	38.4 2008	54.5 2015	38.4 2011	mm
Periode	Max Gesamtniederschlag 1292.1 (2016)						Min Gesamtniederschlag 834.7 (2015)						mm



Jahressumme	2007	2008	2009	2010	2011	2012	2013	2014	2015	2016		mm
	1128.1	1019.4	944.3	891.8	849.8	1093.5	1092.7	994.7	834.7	1292.1		mm

Niederschlag

Gemeindehaus - Gerlafingen

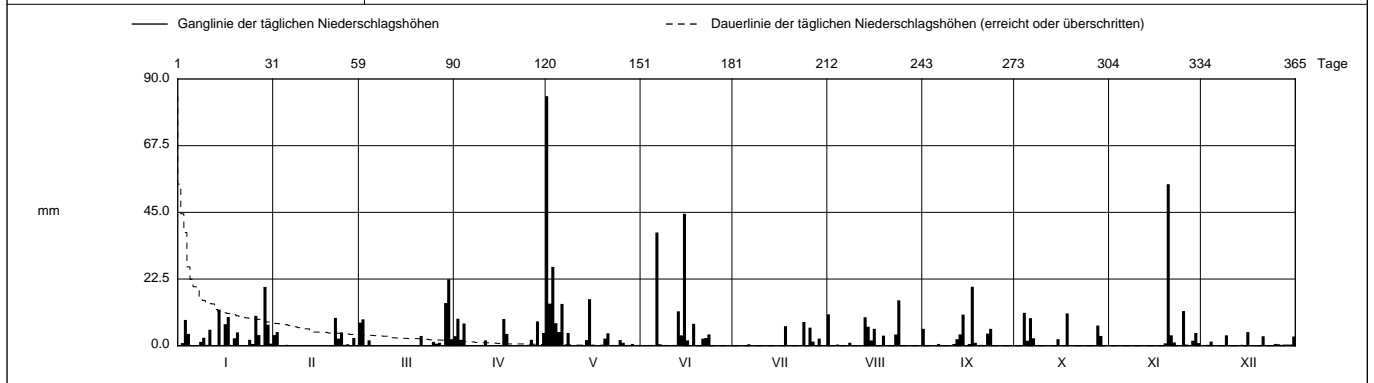
SO 610/224/030

Koordinaten 610 210 / 224 460

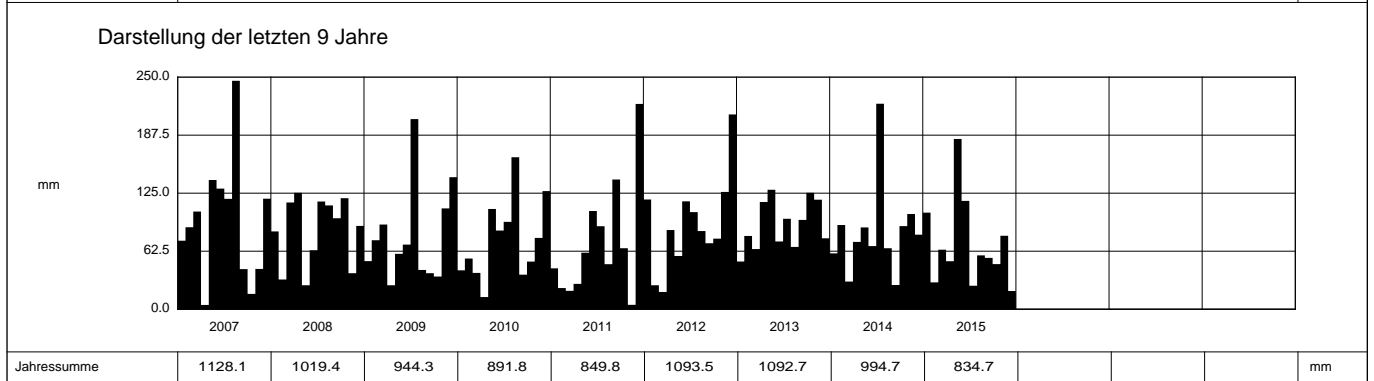
Stations Höhe 463.0 müM

Fläche - km2

2015		Jan	Feb	März	April	Mai	Juni	Juli	Aug	Sept	Okt	Nov	Dez		
1		0	3.6	7.8	3.2	84.2 +	0	0	10.6	5.7	0	0	0	1	
2		0.9	4.6	8.9	9.1 +	14.2	0.2	0	0	0	0	0	0	2	
3		8.7	0	0	2.0	26.6	0	0	0	0.2	0	0	0.3	3	
4		4.0	0	1.8	7.5	7.6	0	0	0.4	0	11.1 +	0	1.4	4	
5		0.1	0.3	0	0	4.6	0	0	0	0	1.7	0	0.1	5	
Tägliche Niederschlags-höhen															
6		0.1	0.1	0	0	14.1	38.2	0.5	0	0.6	9.3	0	0	6	
7		0	0	0	0	0	0.5	0	0	2.5	0	0	0	7	
8		1.3	0.1	0.1	0	4.3	0	0	1.0	0	0	0	0	8	
9		2.7	0.1	0	0	0	0	0	0	0	0	0	3.5	9	
10		0.3	0	0	0	0	0	0	0	0	0	0	0	10	
11		5.4	0	0	1.8	0	0	0	0	0.6	0	0	0	11	
12		0	0	0	0	0	0	0	2.2	0	0	0	0	12	
13		0	0	0	0	0	11.6	0	9.6	3.8	0.1	0	0.1	13	
14		12.2	0	0	0	1.9	3.5	0	6.4	10.5	0	0	0.3	14	
15		0	0	0	0	15.7	44.5 +	0	1.8	0.2	2.2	0	0	15	
mm															
16		7.3	0	0	0.2	0	1.8	0	5.7	0.6	0.1	0	4.6 +	16	
17		9.7	0.2	0	9.0	0	0	0	19.9 +	0.1	0.1	0.1	0.1	17	
18		0.1	0	0	4.0	0	7.4	6.6	0	1.0	10.9	0.1	0	18	
19		2.5	0	0	0	0.1	0.2	0	3.4	0	0	0.8	0	19	
20		4.5	0	0	0	2.4	0	0	0	0.3	0	54.5 +	0	20	
21		0	9.4 +	3.3	0	4.2	2.4	0	0	0	0	3.5	3.2	21	
22		0.1	2.4	0	0	0	2.6	0.1	0	4.1	0	1.1	0	22	
23		0	4.5	0	0	0	3.8	0	3.8	5.7	0	0	0.2	23	
+ Maximum															
24		2.0	0.3	0	0	0	0	8.0 +	15.3 +	0	0.1	0	0.1	24	
25		0.6	0.5	1.3	0.3	1.9	0	0.2	0	0.1	0.1	11.7	0.6	25	
26		10.1	0	0.7	2.0	1.0	0	6.1	0	0	0	0.4	0.5	26	
27		3.6	2.6	1.0	0.1	0	0	1.4	0	0	0.1	0	0.3	27	
28		0.2	0.2	0.2	8.2	0	0	0	0	6.8	1.7	0.4	0.4	28	
29		19.9 +	0	14.4	0	0.6	0	2.4	0	3.3	4.3	0.4	0.4	29	
30		7.1	0	22.4 +	4.3	0	0	0	0	0	0.9	0.4	0.4	30	
31		0.7	0	2.2	0	0	0	0	0	0	0	3.1	0.3	31	
Monatssumme		104.0	28.9	64.1	51.7	183.4 +	116.7	25.3	58.0	55.3	48.6	79.1	19.6 -	mm	
Niederschlagstage		15 +	6	9	10	13	9	5 -	9	8	8	6	5 -	Tage	
Niederschlagstage grösser oder gleich als [mm]		166 >= 0.1		45 >= 5			21 >= 10		6 >= 20		2 >= 50		>= 100		Tage
Jahreswerte		Gesamtniederschlag 834.7 mm					Niederschlagstage 103 Tage								



Periode	2007 - 2015 (9 Jahre)													
Mit Monatssumme	69.9	55.1 -	60.8	57.9	94.6	91.9	119.1	98.6	67.3	69.8	77.6	120.6 +	mm	
Max Tagessumme Jahr	31.6 2012	22.8 - 2014	37.2 2008	34.3 2013	84.2 2015	44.5 2015	58.7 2013	108.3 + 2007	71.8 2011	38.4 2008	54.5 2015	38.4 2011	mm	
Periode	Max Gesamtniederschlag 1128.1 (2007)					Min Gesamtniederschlag 834.7 (2015)								mm



Niederschlag

Gemeindehaus - Gerlafingen

SO 610/224/030

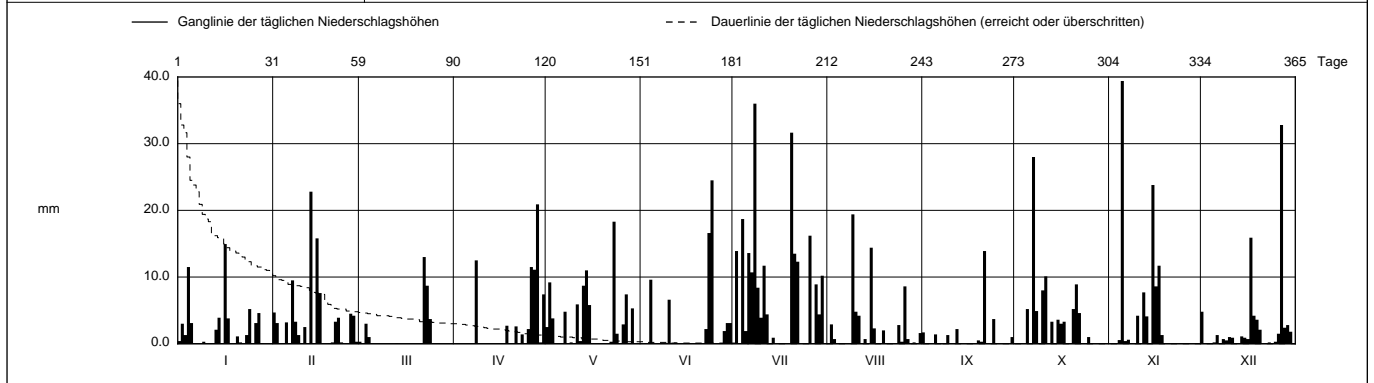
Koordinaten 610 210 / 224 460

Stations Höhe 463.0 müM

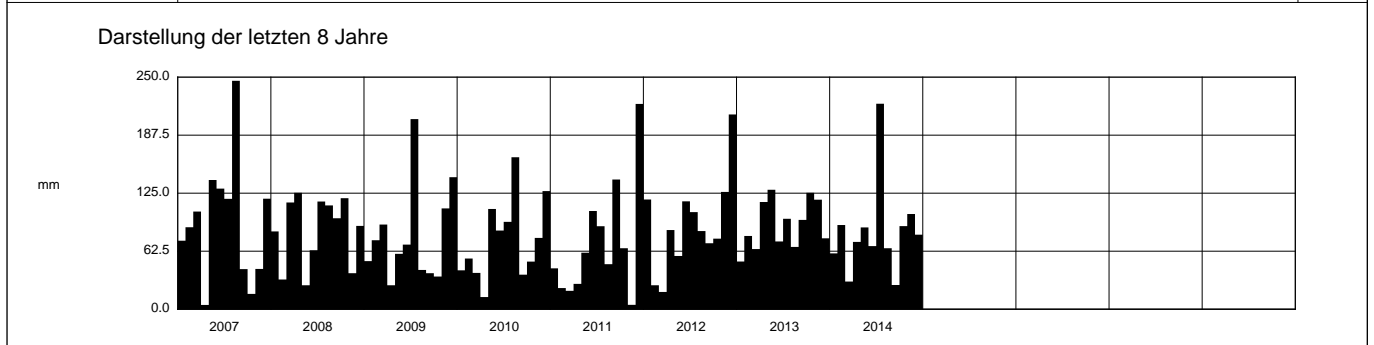
Fläche - km2

2014		Jan	Feb	März	April	Mai	Juni	Juli	Aug	Sept	Okt	Nov	Dez		
1		0.4	4.7	0.3	0	2.5	0	0	0	1.7	0	0	4.8	1	
2		3.0	3.1	0	0	9.2	0.1	13.9	2.9	0	0.1	0	0	2	
3		1.3	0	3.0	0	3.8	0	0	0.7	0	0.1	0	0	3	
4		11.5	0.1	1.0	0	0	9.6	18.7	0	0	0	0.6	0.1	4	
5		3.1	3.2	0	0	0	0	1.9	0	1.4	5.2	39.4 +	0.2	5	
6	Tägliche Niederschlags-höhen	0	0	0	0	0	0	13.6	0	0	0	0.4	1.3	6	
7		0	9.5	0	0	4.8	0	10.7	0	0	28.0 +	0.6	0.1	7	
8		0	3.3	0	12.5	0	0	36.0 +	0	0	4.9	0.1	0.7	8	
9		0.3	1.3	0	0	0.2	0	8.4	19.4 +	1.3	0.1	0	0.5	9	
10		0	0.1	0	0	0.1	6.6	3.9	4.8	0	8.0	4.2	1.0	10	
11		0	2.5	0	0	5.9	0	11.7	4.2	0	10.1	0	0.9	11	
12		0.1	0	0	0	0.4	0.2	4.4	0	2.2	0	7.7	0.1	12	
13		2.1	22.8 +	0.1	0	8.7	0	0	0.7	0.1	3.3	4.1	0.1	13	
14		3.9	0	0	0	11.0	0	0.9	0	0	0	0	1.1	14	
15		0.1	15.8	0	0	5.8	0	0	14.4	0	3.6	23.8	0.9	15	
16	mm	15.0 +	7.6	0	0	0	0	2.3	0	3.0	8.6	0.7	16		
17		3.8	0	0	0	0	0	0	0	3.3	11.7	15.9	17		
18		0	0	0	2.7	0	0	0	0	0	1.3	4.2	18		
19		0	0.1	0	0	0	0.1	0	2.0	0.5	0.1	0	3.6	19	
20		1.1	0.2	0	0	0	0	31.7	0.1	0.3	5.2	0	2.1	20	
21	+ Maximum	0.2	3.3	0	2.6	0	0	13.5	0	13.9 +	8.9	0	0	21	
22		0	3.9	13.0 +	0	0.3	2.2	12.3	0	0	4.6	0	0.1	22	
23		1.3	0.2	8.7	1.4	18.3 +	16.6	0	0	0	0	0	0.2	23	
24		5.2	0	3.7	0	1.5	24.5 +	0	2.8	3.7	0	0.1	0	24	
25		0	0	0	2.2	0	0	0	0.3	0	1.0	0	0.3	25	
26	3.1	4.5	0	11.5	2.9	0	16.2	8.6	0	0	0	1.5	26		
27	4.6	4.2	0	11.1	7.4	0	0	0.7	0	0	0	32.8 +	27		
28	0.1	0.3	0	20.9 +	0	1.9	8.9	0	0	0	0	2.4	28		
29	0	0	0	0.2	5.3	3.1	4.4	0.2	0	0	0	2.8	29		
30	0	0	0	7.4	0	3.1	10.2	0	1.0	0	0	1.8	30		
31	0	0	0	0	0	0	0.1	1.6	0	0	0	0.1	31		
Monatssumme		60.2	90.7	29.8	72.5	88.1	68.0	221.4 +	65.7	26.1 -	89.5	102.6	80.3	mm	
Niederschlagstage		13	14	5 -	9	13	8	17 +	10	7	13	8	13	Tage	
Niederschlagstage grösser oder gleich als [mm]		186 >= 0.1		56 >= 5			34 >= 10		9 >= 20		>= 50		>= 100		Tage
Jahreswerte		Gesamtniederschlag 994.7 mm					Niederschlagstage 130 Tage								

Ganglinie der täglichen Niederschlagshöhen		----- Dauerlinie der täglichen Niederschlagshöhen (erreicht oder überschritten)											
mm		1 31 59 90 120 151 181 212 243 273 304 334 365 Tage											



Periode	2007 - 2014 (8 Jahre)												
Mit Monatssumme	65.6	58.4 -	60.4	58.7	83.5	88.8	130.8	103.7	68.8	72.4	77.4	133.2 +	mm
Max Tagessumme Jahr	31.6 2012	22.8 - 2014	37.2 2008	34.3 2013	37.4 2010	29.5 2010	58.7 2013	108.3 + 2007	71.8 2011	38.4 2008	39.4 2014	38.4 2011	mm
Periode	Max Gesamtniederschlag 1128.1 (2007)						Min Gesamtniederschlag 849.8 (2011)						mm



Jahressumme	1128.1	1019.4	944.3	891.8	849.8	1093.5	1092.7	994.7					mm
-------------	--------	--------	-------	-------	-------	--------	--------	-------	--	--	--	--	----

Niederschlag

Gemeindehaus - Gerlafingen

SO 610/224/030

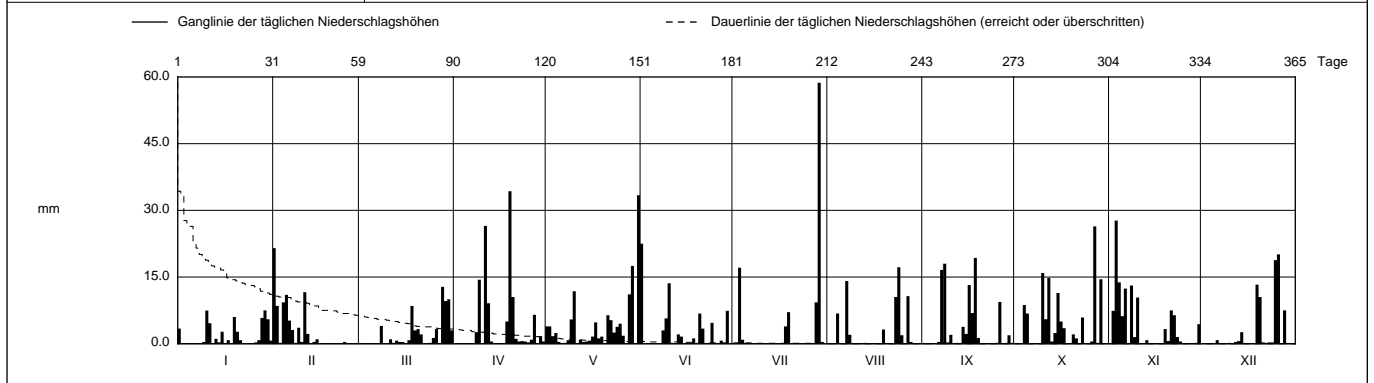
Koordinaten 610 210 / 224 460

Stations Höhe 463.0 müM

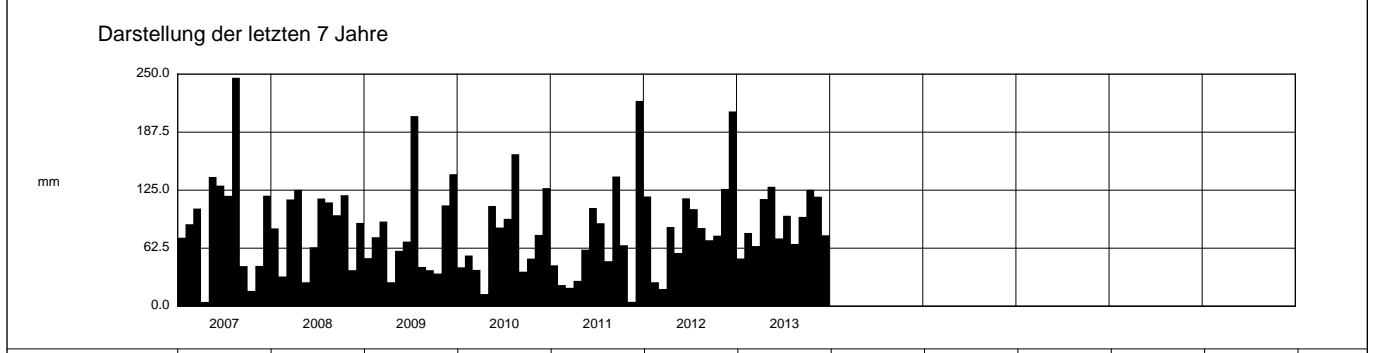
Fläche - km2

2013		Jan	Feb	März	April	Mai	Juni	Juli	Aug	Sept	Okt	Nov	Dez		
1		3.4	21.5 +	0	0	3.9	22.5 +	0	0	0	0.1	0	0	1	
2		0.1	8.5	0.1	0	3.9	0	0	0	0	0	7.4	0	2	
3		0.1	0.2	0	0	1.7	0	17.1	0	0	0	27.7 +	0.1	3	
4		0.1	9.3	0	0	2.4	0	0.9	6.8	0	8.7	13.8	0	4	
5		0	11.0	0	0	0.4	0	0	0	0	6.8	6.2	0	5	
6	Tägliche Niederschlags-höhen	0.1	5.2	0	0	0.1	0	0	0	0.4	0	12.4	0.8	6	
7		0	3.1	0	0	0.2	0	0	14.1	16.6	0	0	0	7	
8		0	0.2	4.0	2.6	0.8	3.0	0	2.0	18.0	0	13.1	0.1	8	
9		0.4	3.6	0	14.4	5.5	5.7	0	0.1	0.3	0	1.5	0.1	9	
10		7.5	0.4	0	0	11.8	13.6	0	0	2.0	15.9	10.4	0.2	10	
11		4.6	11.6	1.0	26.5	0	0.2	0	0	0.1	5.5	0	0	11	
12		0	2.2	0.2	9.1	0.9	0	0	0	0.2	14.8	0	0.4	12	
13		1.1	0	0.7	0.5	0.4	2.1	0	0.2	0	0.5	0.8	0.6	13	
14		0.3	0.4	0.4	0	0.5	1.6	0	0	3.8	2.4	0.1	2.6	14	
15		2.7	1.0	0.4	0	0.7	0	0	0	2.2	11.4	0.1	0	15	
16	mm	0	0	0	0	1.6	0	0	0	13.2	5.0	0	0	16	
17		0.8	0	0.8	0	4.8	0	0	0	6.9	3.5	0	0	17	
18		0	0	8.5	5.0	1.2	1.2	3.9	0	19.3 +	0	0	0.1	18	
19		6.0	0	3.0	34.3 +	1.6	0	7.1	3.2	1.3	0	3.3	13.3	19	
20		2.7	0.1	3.3	10.5	0	6.8	0	0	0	2.1	0.6	10.5	20	
21		0.8	0	2.1	1.1	6.4	3.4	0	0	0	1.2	7.5	0.3	21	
22		0	0	0	0.5	5.3	0	0	0	0	0	6.4	0.2	22	
23		0.1	0	0	0.6	2.5	0	0	10.5	0	5.9	1.5	0.3	23	
24	+ Maximum	0	0.4	0.2	0.5	3.8	4.7	0	17.2 +	0	0	0.5	0.3	24	
25		0	0	1.3	0.3	4.5	0.1	0	1.9	0.2	0	0.1	18.8	25	
26		0.3	0	3.3	0.9	1.8	0	0	0	9.4	0.5	0	20.1 +	26	
27		0.8	0.1	0.1	6.5	0	0.7	0	10.7	0	26.4 +	0	0	27	
28		5.8	0.1	12.8 +	0	11.1	0	9.3	0.4	0.2	0.2	0	7.5	28	
29		7.5 +		9.6	1.7	17.5	7.4	58.7 +	0	1.9	14.5	0.2	0.1	29	
30		5.5		10.0	0.5	0	0	0.4	0	0.2	0	4.4	0	30	
31		0.7		3.0		33.4 +		0	0	0	0	0	0	31	
Monatssumme		51.4 -	78.9	64.8	115.5	128.7 +	73.0	97.4	67.1	96.2	125.4	118.0	76.4	mm	
Niederschlagstage		10	10	12	10	19 +	11	5 -	8	11	14	13	6	Tage	
Niederschlagstage grösser oder gleich als [mm]		211 >= 0.1		73 >= 5			39 >= 10		9 >= 20		1 >= 50		>= 100		Tage
Jahreswerte		Gesamtniederschlag 1092.7 mm					Niederschlagstage 129 Tage								

Ganglinie der täglichen Niederschlagshöhen		--- Dauerlinie der täglichen Niederschlagshöhen (erreicht oder überschritten)													
mm		1	31	59	90	120	151	181	212	243	273	304	334	365	Tage



Periode	2007 - 2013 (7 Jahre)												
Mit Monatssumme	66.4	53.8 -	64.8	56.7	82.8	91.8	117.9	109.1	74.9	70.0	73.8	140.8 +	mm
Max Tagessumme Jahr	31.6 2012	21.5 - 2013	37.2 2008	34.3 2013	37.4 2010	29.5 2010	58.7 2013	108.3 + 2007	71.8 2011	38.4 2008	31.1 2012	38.4 2011	mm
Periode	Max Gesamtniederschlag 1128.1 (2007)						Min Gesamtniederschlag 849.8 (2011)						mm



Jahressumme	1128.1	1019.4	944.3	891.8	849.8	1093.5	1092.7							mm
-------------	--------	--------	-------	-------	-------	--------	--------	--	--	--	--	--	--	----

Niederschlag

Gemeindehaus - Gerlafingen

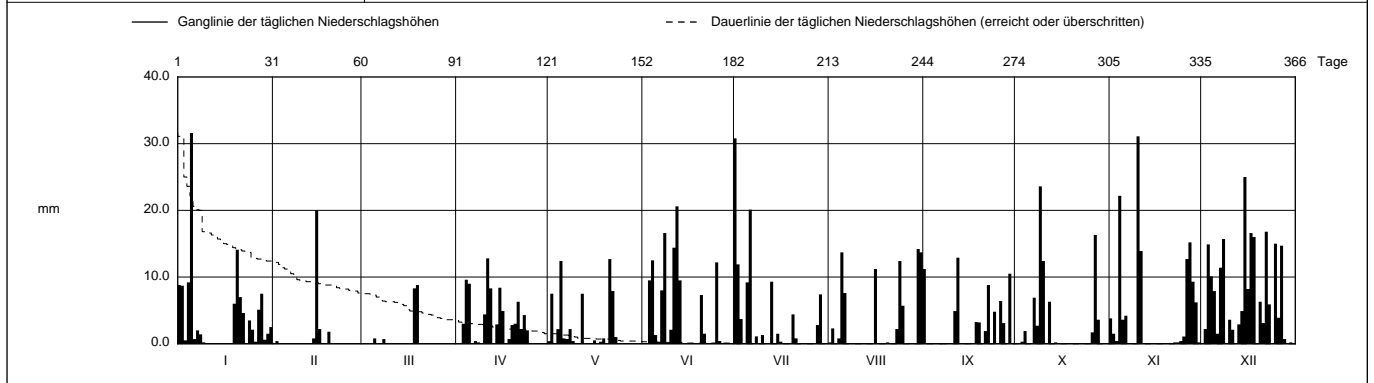
SO 610/224/030

Koordinaten 610 210 / 224 460

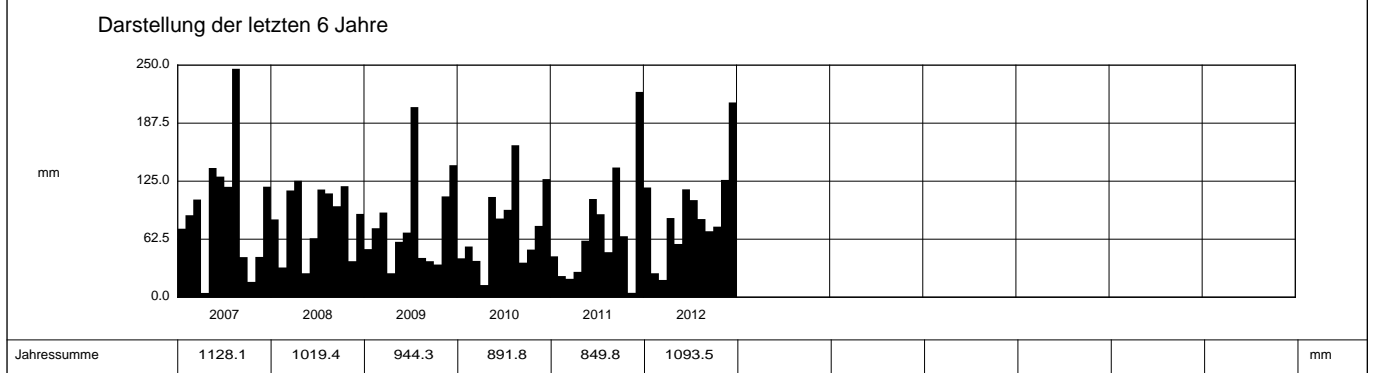
Stations Höhe 463.0 müM

Fläche - km2

2012	Jan	Feb	März	April	Mai	Juni	Juli	Aug	Sept	Okt	Nov	Dez		
1	8.8	0	0	0	0.4	0	30.8 +	0.2	11.2	0	3.8	0	1	
2	8.7	0.4	0	0	7.5	0	11.9	2.3	0	0	1.5	2.2	2	
3	0.5	0	0	3.0	0.1	9.5	3.7	0	0	0.3	0.4	14.9	3	
4	9.2	0	0	9.6	2.2	12.5	0	0.8	0	1.9	22.2	10.1	4	
5	31.6 +	0	0.8	9.0	12.4	1.3	9.2	13.7	0	0	3.6	7.9	5	
Tägliche Niederschlags-höhen														
6	0.7	0	0	0	0.8	0.3	20.1	7.6	0	0	4.2	1.5	6	
7	2.0	0	0	0.4	0.7	8.0	0	0	0	6.9	0	11.4	7	
8	1.4	0	0.7	0.2	2.2	16.6	1.1	0	0	2.7	0	15.7	8	
9	0.2	0	0	0	0.4	0	0	0	0	23.6 +	0	0.1	9	
10	0	0	0	4.4	0	2.1	1.3	0	0	12.4	31.1 +	3.6	10	
11	0	0	0	12.8 +	0	14.4	0	0	4.9	0	13.9	2.1	11	
12	0	0	0	8.3	7.5	20.6 +	0	0	12.9 +	6.3	0.1	0.1	12	
13	0.1	0.1	0	0	0	9.5	9.3	0	0.1	0	0	2.9	13	
14	0	0.8	0	2.9	0	0	0	0	0	0.2	0	4.9	14	
15	0	20.0 +	0	8.4	0	0	1.5	0	0	0	0	25.0 +	15	
mm														
16	0	2.2	0	4.9	0.5	0	0.3	11.2	0	0	0	8.2	16	
17	0.1	0.1	0	0.1	0	0	0	0	0	0	0	16.6	17	
18	0.1	0.1	8.3	0.7	0.3	0	0	0	3.3	0	0	16.0	18	
19	6.0	1.8	8.8 +	2.8	0.8	0	0	0	3.2	0	0	0	19	
20	14.1	0	0	3.0	0	7.3	4.4	0.2	0	0	0.1	6.3	20	
21	7.0	0	0	6.3	12.7 +	1.5	0.8	0	1.9	0	0	3.1	21	
22	4.6	0.1	0	2.2	7.9	0	0	0	8.8	0	0.2	16.8	22	
23	0	0	0	4.3	1.0	0	0	2.2	0	0	0.2	5.9	23	
+ Maximum														
24	3.5	0.1	0	2.0	0	0	0	12.4	4.8	0	0.4	0	24	
25	2.1	0	0	0	0	12.2	0	5.7	0	0	1.1	15.0	25	
26	0.3	0.1	0	0	0	0.4	0	0	6.4	1.7	12.7	3.9	26	
27	5.1	0	0	0	0	0	0	0	3.1	16.3	15.2	14.7	27	
28	7.5	0	0	0	0	0	2.8	0	0	3.6	9.3	0.7	28	
29	0.6	0	0	0	0	0	7.4	0	10.5	0.1	6.2	0	29	
30	1.5	0	0	0	0	0	0	14.2 +	0	0	0.2	0.2	30	
31	2.5	0	0	0	0	0	0	13.7	0	0	0	0	31	
Monatssumme	118.2	25.8	18.6 -	85.3	57.4	116.2	104.6	84.2	71.1	76.0	126.4	209.8 +	mm	
Niederschlagstage	16	3	2 -	15	8	12	12	9	11	9	12	22 +	Tage	
Niederschlagstage grösser oder gleich als [mm]	183 >= 0.1		76 >= 5			40 >= 10		9 >= 20		>= 50		>= 100		Tage
Jahreswerte	Gesamtniederschlag 1093.5 mm					Niederschlagstage 131 Tage								



Periode	2007 - 2012											(6 Jahre)	
Mit Monatssumme	68.9	49.6	64.8	46.9 -	75.1	95.0	121.3	116.1	71.3	60.7	66.4	151.5 +	mm
Max Tagessumme	31.6	20.4 -	37.2	34.3	37.4	29.5	50.5	108.3 +	71.8	38.4	31.1	38.4	mm
Jahr	2012	2010	2008	2008	2010	2010	2009	2007	2011	2008	2012	2011	
Periode	Max Gesamtniederschlag 1128.1 (2007)					Min Gesamtniederschlag 849.8 (2011)							mm



Jahressumme	2007	2008	2009	2010	2011	2012							mm
	1128.1	1019.4	944.3	891.8	849.8	1093.5							

Niederschlag

Gemeindehaus - Gerlafingen

SO 610/224/030

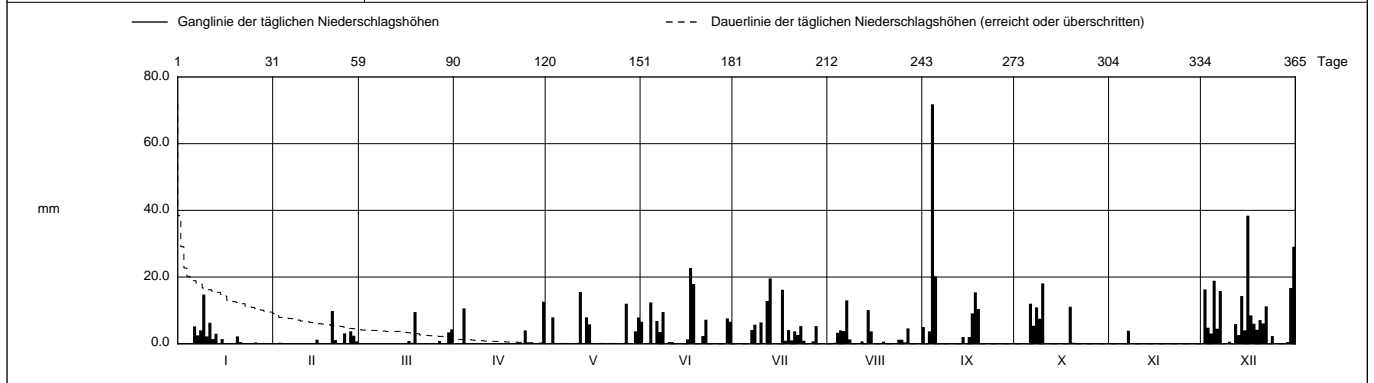
Koordinaten 610 210 / 224 460

Stations Höhe 463.0 müM

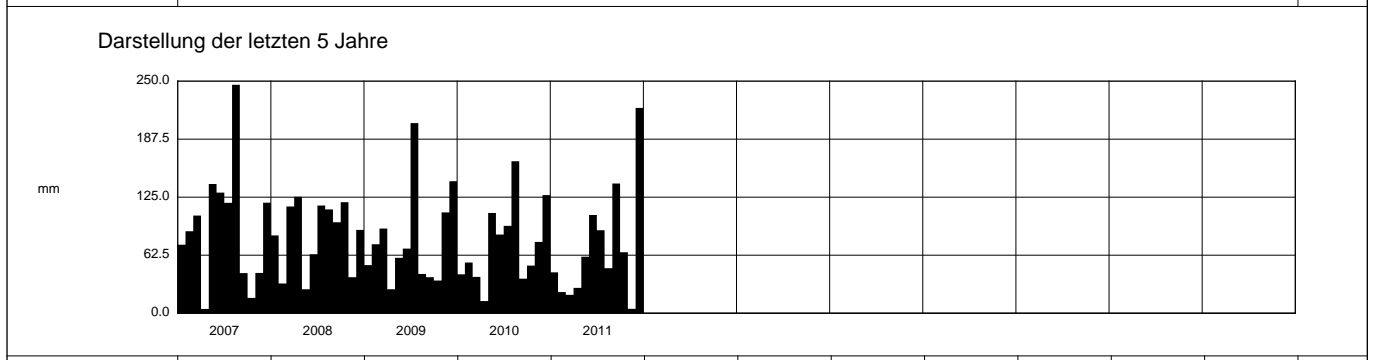
Fläche - km2

2011		Jan	Feb	März	April	Mai	Juni	Juli	Aug	Sept	Okt	Nov	Dez		
1		0	0	0	0	0	6.6	0	0	5.0	0	0	0	1	
2		0	0	0	0	0	0	0	0	0.1	0	0.1	16.3	2	
3		0	0.3	0	0.1	7.9	0	0	0.3	3.7	0	0.1	4.8	3	
4		0	0.1	0.1	10.6	0	12.4	0	3.3	71.8 +	0	0	3.1	4	
5		0	0.1	0	0	0	0.1	0	4.0	20.2	0	0	18.9	5	
6	Tägliche Niederschlags-höhen	5.2	0.1	0	0	0.1	6.8	0	3.8	0	12.0	0	4.5	6	
7		2.5	0	0	0	0	3.5	4.1	13.0 +	0	5.4	3.9 +	15.8	7	
8		4.0	0	0	0	0	9.5	5.7	1.3	0	10.9	0.1	0	8	
9		14.8 +	0	0.1	0	0	0.1	0	0.2	0	7.5	0	0	9	
10		2.2	0	0	0	0	0.5	6.4	0	0	18.1 +	0	0.6	10	
11		6.3	0	0	0	0.1	0.5	0	0	0	0	0	0	11	
12		1.4	0	0.1	0	15.5 +	0	12.8	0.7	0	0.1	0	5.9	12	
13		3.0	0	0	0	0	0.1	19.6 +	0	0	0	0.1	2.6	13	
14		0	0	0.1	0	7.9	0.1	0	10.1	2.0	0	0	14.3	14	
15		1.4	1.2	0	0	5.8	0	0	3.7	0	0	0	4.0	15	
16	mm	0	0	0	0	0	1.3	0	0	2.0	0	0	38.4 +	16	
17		0	0	0.8	0	0	22.7 +	16.2	0	9.1	0	0	8.5	17	
18		0	0	0.3	0	0	17.9	0.9	0.1	15.4	0	0	6.0	18	
19		0.1	0	9.5 +	0	0	0	4.1	0.6	10.4	11.1	0	4.2	19	
20		2.2	9.8 +	0	0	0	0	1.0	0	0	0.3	0	7.1	20	
21		0.5	1.1	0	0	0	2.3	3.7	0	0	0.1	0	6.1	21	
22		0	0.1	0	0	0	7.2	2.6	0	0	0	0	11.2	22	
23		0	0	0	0	0	0	5.3	0	0	0	0.2	0	23	
24	+ Maximum	0	3.1	0	4.0	0	0	0.9	1.2	0	0	0	2.3	24	
25		0.1	0.1	0	0	0	0	0.1	1.2	0	0.1	0	0.1	25	
26		0.4	3.7	0.1	0	0	0	0	0.4	0	0	0	0.1	26	
27		0	2.4	0.8	0	12.0	0	0.7	4.6	0	0	0	0.1	27	
28		0	0.7	0.2	0	0	0	5.3	0	0	0	0.1	0	28	
29		0	0	0	0	0	7.6	0	0	0	0.1	0.1	0.5	29	
30		0	0	3.4	12.6 +	3.7	6.6	0	0	0	0	0	16.7	30	
31		0	0	4.3	0	7.9	0	0	0	0	0	0	29.1	31	
Monatssumme		44.0	22.8	19.8	27.3	60.9	105.8	89.4	48.5	139.7	65.7	4.7 -	221.2 +	mm	
Niederschlagstage		10	6	3	3	7	12	12	10	9	6	1 -	20 +	Tage	
Niederschlagstage grösser oder gleich als [mm]		156 >= 0.1		56 >= 5			29 >= 10		5 >= 20		1 >= 50		>= 100		Tage
Jahreswerte		Gesamtniederschlag 849.8 mm					Niederschlagstage 99 Tage								

Ganglinie der täglichen Niederschlagshöhen		----- Dauerlinie der täglichen Niederschlagshöhen (erreicht oder überschritten)												
mm		1	31	59	90	120	151	181	212	243	273	304	334	365
mm		80.0												
mm		60.0												
mm		40.0												
mm		20.0												
mm		0.0												
		I	II	III	IV	V	VI	VII	VIII	IX	X	XI	XII	



Periode	2007 - 2011 (5 Jahre)												
Mit Monatssumme	59.1	54.4	74.1	39.2 -	78.7	90.7	124.6	122.5	71.4	57.7	54.5	139.9 +	mm
Max Tagessumme	21.1	20.4 -	37.2	34.3	37.4	29.5	50.5	108.3 +	71.8	38.4	28.6	38.4	mm
Jahr	2007	2010	2008	2008	2010	2010	2009	2007	2011	2008	2009	2011	
Periode	Max Gesamtniederschlag 1128.1 (2007)						Min Gesamtniederschlag 849.8 (2011)						mm



Jahressumme	1128.1	1019.4	944.3	891.8	849.8								mm
-------------	--------	--------	-------	-------	-------	--	--	--	--	--	--	--	----