

Niederschlag

Rüti - Himmelried

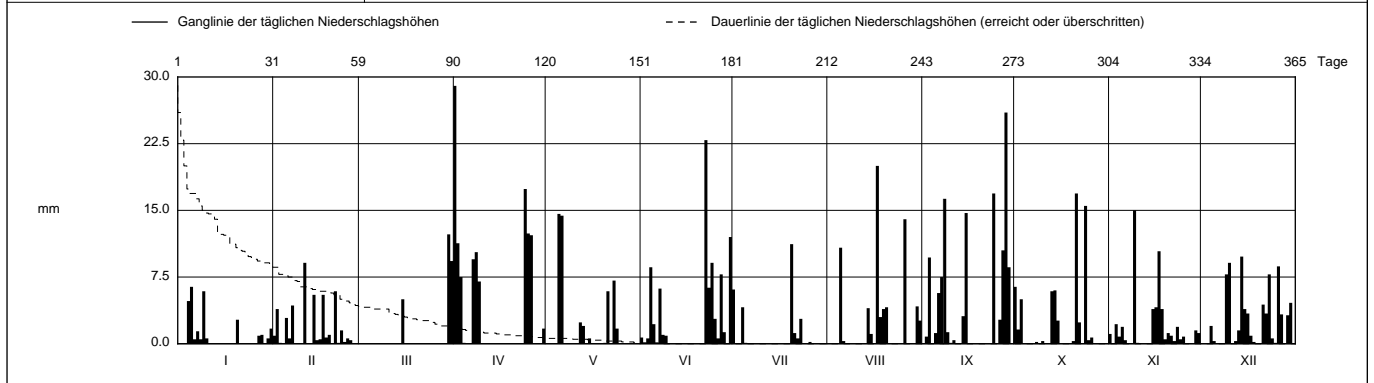
SO 611/252/004

Koordinaten 2 611 905 / 1 252 070

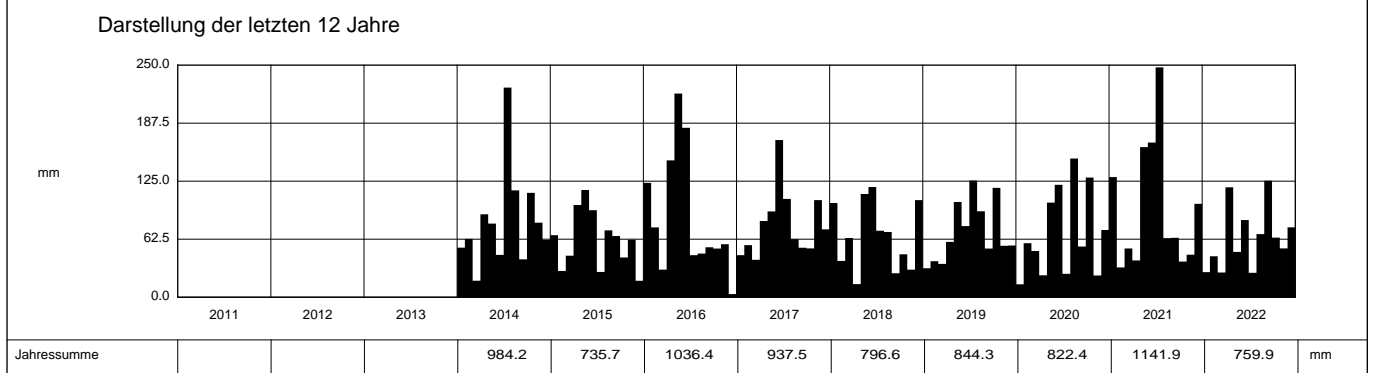
Stations Höhe 645.0 müM

Fläche - km2

2022		Jan	Feb	Mar	Apr	Mai	Jun	Jul	Aug	Sep	Okt	Nov	Dez		
1		0	0.9	0	29.0 +	0	0.7	6.1	0	0	6.4	1.1	0	1	
2		0	3.9	0	11.3	0	0.1	0	0	0.8	1.6	0	0	2	
3		0	0.1	0	7.5	0	0.6	0	0	9.7	5.0	2.2	0	3	
4		4.8	0	0	0.1	0	8.6	4.1	0	0	0	0.8	2.0	4	
5		6.4 +	2.9	0	0	14.6 +	2.2	0.1	10.8	1.2	0	1.9	0.3	5	
6	Tägliche Niederschlags-höhen	0.5	0.6	0	0	14.4	0	0	0.3	5.7	0	0.4	0	6	
7		1.4	4.3	0	9.5	0	6.2	0	0	7.5	0	0	0	7	
8		0.5	0	0	10.3	0	1.0	0	0	16.3	0.2	0	0	8	
9		5.9	0	0	7.0	0	0.9	0	0	1.3	0	15.0 +	7.8	9	
10		0.6	0	0	0	0	0	0	0	0.1	0.3	0.1	9.1	10	
11		0	9.1 +	0	0	0	0	0	0	0.4	0	0	0	11	
12		0	0	0	0	2.4	0	0	0	0	0	0	0.3	12	
13		0	0	0	0	2.0	0	0	0	0	5.9	0	1.5	13	
14		0	5.5	0	0	0	0	0	4.0	3.1	6.0	0	9.8 +	14	
15		0	0.4	5.0	0	0.6	0	0	1.1	14.7	2.6	3.9	3.9	15	
16	mm	0	0.5	0	0	0	0	0	0	0	0	4.1	3.4	16	
17		0	5.5	0	0	0	0	0	20.0 +	0	0	10.4	0.9	17	
18		0	0.7	0	0	0	0	0	3.0	0	0	3.9	0.2	18	
19		0	1.0	0	0	0	0	0	3.9	0	0	0.5	0	19	
20		2.7	0	0	0	0.1	0	11.2 +	4.1	0	0.3	1.2	0	20	
21		0	5.9	0	0	5.9	0	1.2	0	0	16.9 +	0.9	4.4	21	
22		0	0.1	0	0	0	22.9 +	0.6	0	0	2.4	0.3	3.4	22	
23		0	1.5	0	0	7.1	6.3	2.8	0	0	0	1.9	7.8	23	
24	+ Maximum	0	0.2	0	17.4	1.7	9.1	0	0	16.9	15.5	0.5	0.6	24	
25		0	0.6	0	12.4	0	2.8	0	0	0	0.4	0.8	0.1	25	
26		0	0.4	0	12.2	0	0.6	0.2	14.0	2.7	0.7	0	8.7	26	
27		0.9	0	0	0	0	7.8	0	0	10.5	0	0	3.3	27	
28		1.0	0	0	0	0	1.3	0	0	26.0 +	0	0	0	28	
29		0	0	0	0	0	0	0	0	8.6	0	1.5	3.2	29	
30		0.6	0	12.3 +	1.7	0	12.0	0	4.2	0	0	1.2	4.6	30	
31		1.7	0	9.3	0	0	0	0	2.6	0	0	0	0	31	
Monatssumme		27.0	44.1	26.6	118.4	48.8	83.1	26.3 -	68.0	125.5 +	64.2	52.6	75.3	mm	
Niederschlagstage		7	9	3 -	10	7	11	5	10	13	9	12	14 +	Tage	
Niederschlagstage grösser oder gleich als [mm]		159 >= 0.1		56 >= 5			24 >= 10		4 >= 20		>= 50		>= 100		Tage
Jahreswerte		Gesamtniederschlag 759.9 mm				Niederschlagstage 110 Tage									



Periode	2000 - 2022 (ohne: 2011, 2012, 2013)												(20 Jahre)
Mit Monatssumme	54.1	45.3 -	58.7	73.7	109.8 +	98.7	108.0	99.0	73.7	78.9	60.8	62.6	mm
Max Tagessumme	31.0	21.1 -	39.8	52.8	69.5 +	45.7	63.4	63.1	62.1	44.6	39.8	33.3	mm
Jahr	2021	2009	2006	2006	2016	2000	2014	2007	2006	2014	2015	2010	
Periode	Max Gesamtniederschlag 1285.4 (2002)				Min Gesamtniederschlag 630.0 (2003)								mm



Niederschlag

Rüti - Himmelried

SO 611/252/004

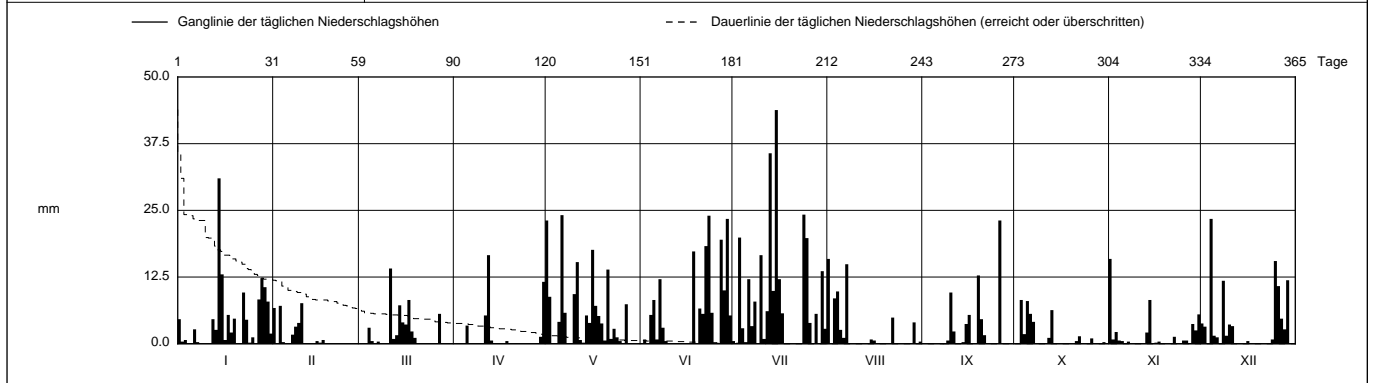
Koordinaten 2 611 905 / 1 252 070

Stations Höhe 645.0 müM

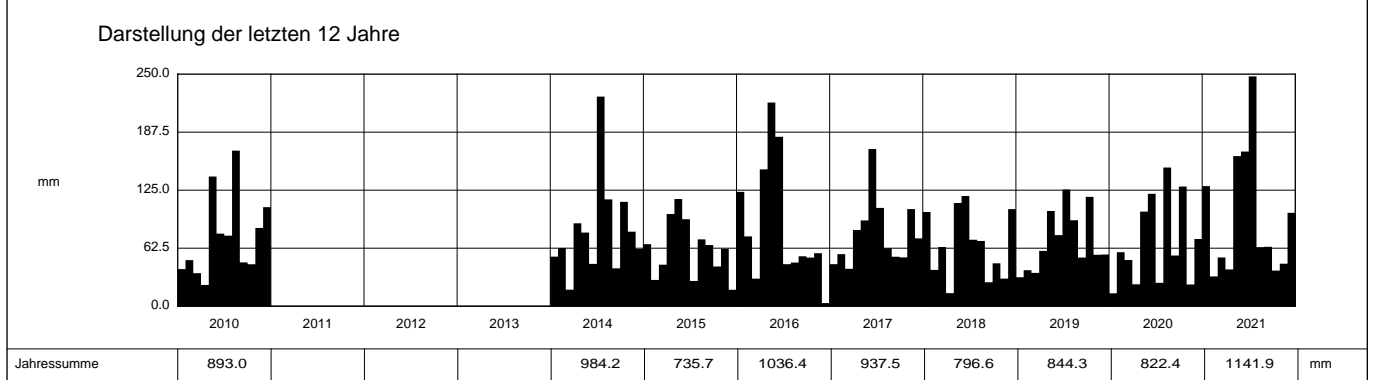
Fläche - km2

2021		Jan	Feb	März	April	Mai	Juni	Juli	Aug	Sept	Okt	Nov	Dez	
1		4.6	6.7	0	0	23.1	0	0.5	15.9 +	0	0	15.9 +	3.8	1
2		0.4	0.1	0	0	8.8	0.8	0	0	0	0	0.8	3.2	2
3		0.7	7.1	0	0	0	0	19.9	8.5	0	8.2 +	2.2	0	3
4		0	0.3	3.0	0	0	5.4	2.9	9.8	0	1.8	0.6	23.4 +	4
5		0.1	0	0.5	3.4	4.1	8.2	0.3	2.6	0	8.0	0.5	1.5	5
6	Tägliche Niederschlags-höhen	2.7	0	0	0	24.1 +	0.8	12.1	1.1	0	5.6	0	1.2	6
7		0.3	1.7	0.4	0	5.8	12.1	3.3	14.9	0	4.1	0.4	0.1	7
8		0	3.2	0	0	0	3.0	7.9	0	0	0	0	11.8	8
9		0	3.9	0	0	0	0.5	0	0	0.6	0	0	1.5	9
10		0	7.6 +	0	0	9.3	0	16.6	0	9.6	0	0	3.6	10
11		0	0.1	14.1 +	5.3	15.3	0	0.9	0	2.3	0	0	3.3	11
12		4.6	0	0.9	16.6 +	0.7	0	6.1	0	0	1.1	0	0	12
13		2.6	0	1.6	0.6	0.2	0	35.7	0	0	6.3	2.1	0	13
14		31.0 +	0	7.2	0.1	5.3	0	9.9	0	0.3	0	8.2	0	14
15		13.0	0.5	4.0	0	3.9	0	43.8 +	0.8	3.7	0	0.1	0.1	15
16	mm	0.7	0.2	3.6	0	17.6	0	12.1	0.6	5.4	0	0.2	0.5	16
17		5.4	0.7	8.2	0	7.1	0	5.7	0	0	0.4	0.1	0.1	17
18		2.1	0	2.3	0.5	5.2	17.3	0	0	0	0	0	0	18
19		4.7	0	1.1	0	3.8	0	0	0	12.8	0	0	0	19
20		0	0	0	0	0.6	6.6	0	0	4.6	0	0	0.1	20
21		0	0	0	0.1	13.9	5.6	0	0	1.6	0.5	0.1	0	21
22		9.6	0	0	0	0.9	18.3	0	4.9	0	1.4	1.3	0	22
23		4.5	0	0	0	2.8	24.0 +	0	0	0	0	0	0	23
24	+ Maximum	0.2	0	0	0	1.2	5.8	24.2	0	0	0	0	0.8	24
25		1.2	0	0	0	0.5	0	19.8	0	0	0	0.6	15.5	25
26		0	0	0	0	0.1	0	3.9	0	23.1 +	1.0	0.6	10.8	26
27		8.3	0	5.6	0	7.4	19.5	0	0	0	0.1	4.7	0.1	27
28		12.3	0	0	0.1	0	10.0	5.6	0	0	0	3.7	2.7	28
29		10.6	0	0	1.3	0	23.4	0	4.0	0	0	2.5	11.9	29
30		7.9	0	0	11.6	0	5.3	13.6	0.1	0	0.3	5.5	0	30
31		1.9	0	0	0	0	0	2.8	0.4	0	0.1	0	0	31

Monatssumme	129.4	32.1 -	52.5	39.6	161.7	166.6	247.6 +	63.6	64.0	38.4	45.8	100.6	mm	
Niederschlagstage	17	6	10	5 -	17	14	18 +	8	8	9	8	14	Tage	
Niederschlagstage grösser oder gleich als [mm]	192 >= 0.1		77 >= 5			38 >= 10		10 >= 20		>= 50		>= 100		Tage
Jahreswerte	Gesamtniederschlag 1141.9 mm					Niederschlagstage 134 Tage								



Periode	2000 - 2021 (ohne: 2011, 2012, 2013)												(19 Jahre)
Mit Monatssumme	55.5	45.3 -	60.4	71.4	113.0 +	99.5	112.3	100.7	71.0	79.7	61.2	62.0	mm
Max Tagessumme	31.0	21.1 -	39.8	52.8	69.5 +	45.7	63.4	63.1	62.1	44.6	39.8	33.3	mm
Jahr	2021	2009	2006	2006	2016	2000	2014	2007	2006	2014	2015	2010	
Periode	Max Gesamtniederschlag 1285.4 (2002)					Min Gesamtniederschlag 630.0 (2003)							mm



Jahressumme	893.0				984.2	735.7	1036.4	937.5	796.6	844.3	822.4	1141.9	mm
-------------	-------	--	--	--	-------	-------	--------	-------	-------	-------	-------	--------	----

Niederschlag

Rüti - Himmelried

SO 611/252/004

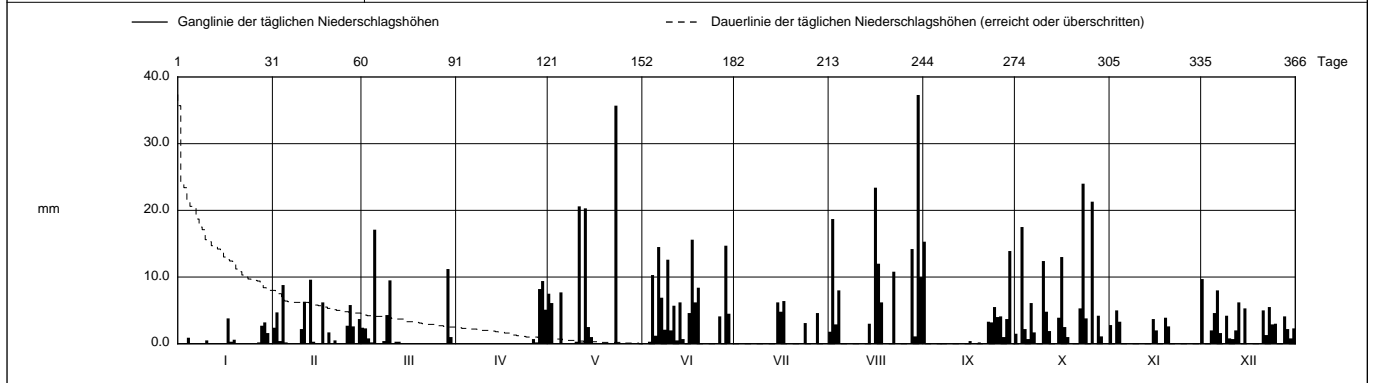
Koordinaten 2 611 905 / 1 252 070

Stations Höhe 645.0 müM

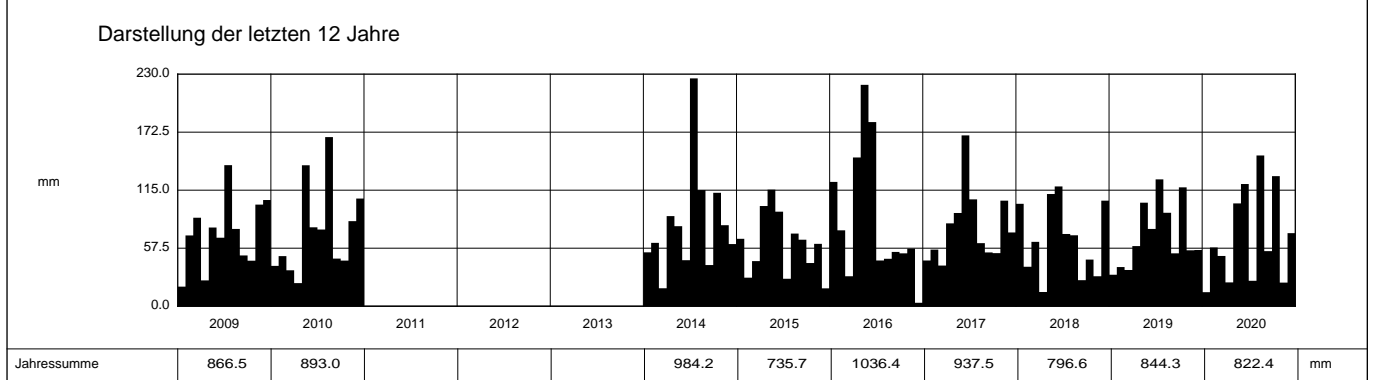
Fläche - km2

2020	Jan	Feb	März	April	Mai	Juni	Juli	Aug	Sept	Okt	Nov	Dez	
1	0	2.4	2.4	0	7.5	0	0	1.8	15.3 +	1.5	2.8	9.7 +	1
2	0	4.7	2.3	0	6.1	0	0	18.7	0	0	0	0	2
3	0.1	0.4	0.8	0	0	0.3	0	2.9	0	17.5	5.0 +	0	3
4	0.9	8.8	0.2	0	0	10.3	0	8.0	0	2.2	3.3	2.0	4
5	0	0.2	17.1 +	0	7.7	1.2	0	0	0	0.7	0.1	4.6	5
Tägliche Niederschlags-höhen													
6	0	0	0	0	0	14.5	0	0	0	6.1	0	8.0	6
7	0	0	0	0	0	6.9	0	0	0	1.7	0	1.6	7
8	0	0	0.4	0	0	2.1	0	0	0	0	0	0	8
9	0	0	4.3	0	0	12.6	0	0	0	0	0	4.2	9
10	0.5	2.2	9.5	0	0.3	2.0	0	0	0	12.4	0	0.8	10
11	0	6.3	0	0	20.6	5.7	0.1	0	0	4.8	0	0.7	11
12	0	0	0.3	0	0.2	0.5	0	0	0	1.9	0	2.0	12
13	0	9.6 +	0.3	0	20.3	6.2	0	0	0	0	0	6.2	13
14	0	0.3	0	0	2.5	0.7	0	3.0	0	0	0	0	14
15	0	0	0	0	1.0	0	6.2	0	0	3.9	3.7	5.3	15
mm													
16	0	0	0	0	0	4.6	4.8	23.4	0.4	13.0	2.0	0.1	16
17	3.8 +	6.2	0	0	0	15.6 +	6.4 +	12.0	0	2.5	0	0.1	17
18	0.3	0	0	0	0	6.2	0	6.2	0	1.0	0	0	18
19	0.6	1.7	0	0	0	8.4	0	0	0.2	0	3.9	0	19
20	0	0	0	0	0	0	0	0	0	0	2.6	0	20
21	0	0.5	0	0	0	0	0	0	0	0	0	5.0	21
22	0	0	0	0	0	0	0	10.8	3.3	5.3	0	1.3	22
23	0	0	0	0	35.7 +	0	0	0	3.2	24.0 +	0	5.5	23
+ Maximum													
24	0	0	0	0	0	0	3.1	0	5.5	3.8 +	0	2.9	24
25	0	2.7	0	0	0	0	0	0	4.0	0	0	3.0	25
26	0	5.8	0	0.7	0	4.1	0	0	4.1	21.3	0	0	26
27	0.2	2.6	0	0.2	0	0	0	0	1.0	0	0	0	27
28	2.7	0.1	0	8.2	0	14.7	4.6	14.2	3.7	4.2	0	4.1	28
29	3.2	3.7	11.2	9.4 +	0	4.5	0	1.1	13.9	1.1	0	2.2	29
30	1.6	0	1.0	5.1	0	0	0	37.3 +	0	0	0	0.8	30
31	0	0	0	0	0	0	0	10.0	0	0	0	2.3	31

Monatssumme	13.9 -	58.2	49.8	23.6	101.9	121.1	25.2	149.4 +	54.6	128.9	23.4	72.4	mm	
Niederschlagstage	4	12	7	3 -	8	16	5	13	9	18 +	7	17	Tage	
Niederschlagstage grösser oder gleich als [mm]	152 >= 0.1		55 >= 5			24 >= 10		7 >= 20		>= 50		>= 100		Tage
Jahreswerte	Gesamtniederschlag 822.4 mm					Niederschlagstage 119 Tage								



Periode	2000 - 2020 (ohne: 2011, 2012, 2013)											(18 Jahre)	
Mit Monatssumme	51.4	46.0 -	60.9	73.1	110.3 +	95.8	104.8	102.7	71.4	81.9	62.1	59.8	mm
Max Tagessumme Jahr	20.3 - 2016	21.1 2009	39.8 2006	52.8 2006	69.5 + 2016	45.7 2000	63.4 2014	63.1 2007	62.1 2006	44.6 2014	39.8 2015	33.3 2010	mm
Periode	Max Gesamtniederschlag 1285.4 (2002)					Min Gesamtniederschlag 630.0 (2003)							mm



Niederschlag

Rüti - Himmelried

SO 611/252/004

Daten unvollständig { ... }

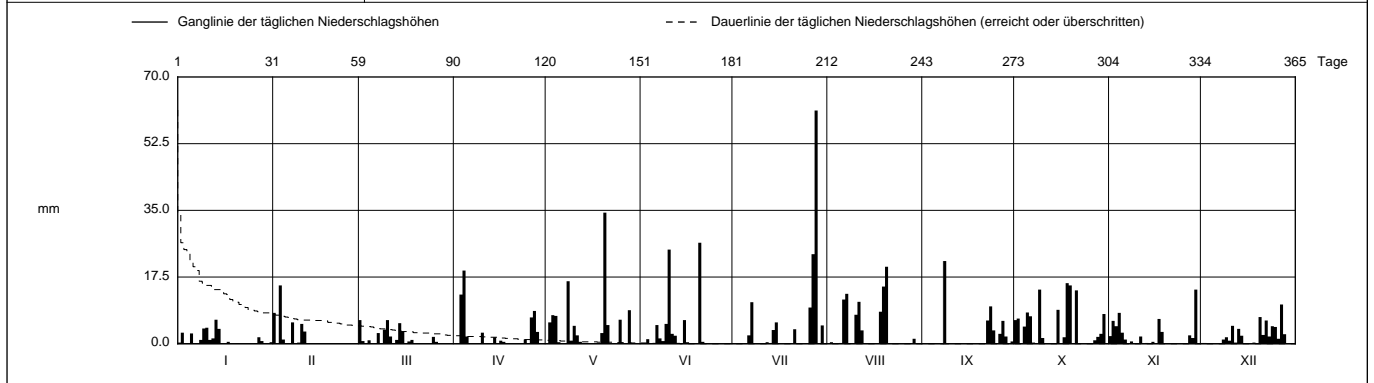
Koordinaten 2 611 905 / 1 252 070

Stations Höhe 645.0 müM

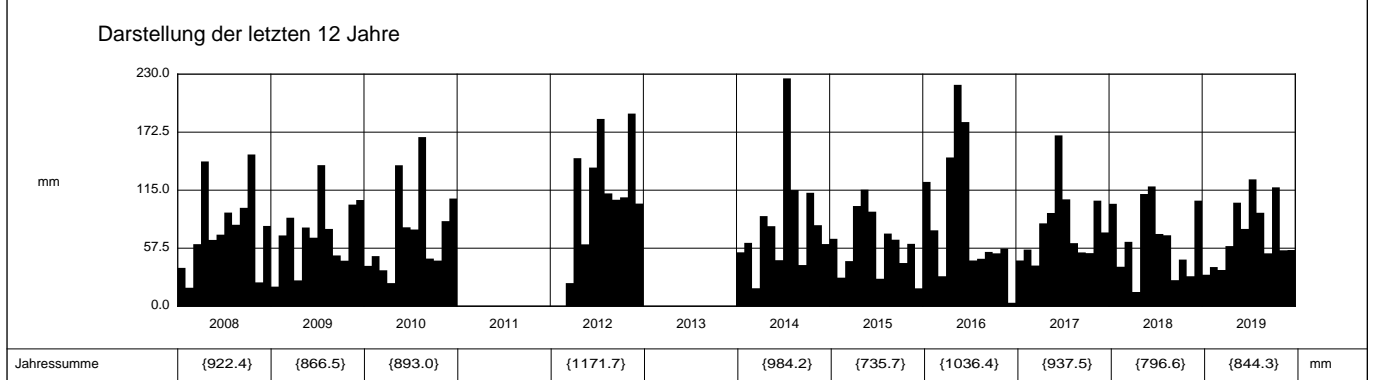
Fläche - km2

2019		Jan	Feb	März	April	Mai	Juni	Juli	Aug	Sept	Okt	Nov	Dez	
1		0.3	8.1	6.2 +	0	0	0	0	0	0	6.2	2.0	0.2	1
2		2.9	0	0.7	0	5.6	0	0	0.4	0	6.6	6.0	0.2	2
3		0	15.3 +	0	12.9	7.5	1.2	0	0	0	0.1	4.6	0	3
4		0	1.1	0.9	19.2 +	7.3	0	0	0	0	4.5	8.1	0	4
5		2.7	0	0	1.9	0.4	0	0	0.2	0.1	8.2	2.9	0	5
6	Tägliche Niederschlags-höhen	0	0	0	0	0	4.9	2.2	11.6	0	7.2	1.1	0	6
7		0	5.6	2.8	0	0	1.4	10.9	13.1	0	0.3	0	0	7
8		1.0	0	0	0	16.4	0.7	0	0	21.7 +	0	0.6	1.1	8
9		4.0	0.3	3.7	0	0.8	5.2	0	0.1	0	14.2	0	1.7	9
10		4.2	5.2	6.2 +	2.9	4.7	24.7	0	7.6	0	1.5	0	0.8	10
11		1.0	3.2	1.9	0	2.2	2.6	0	11.0	0	0	1.9	4.7	11
12		1.4	0	0	0	0.5	2.1	0.4	3.5	0	0	0	0.3	12
13		6.3 +	0	1.0	0	0	0	0.2	0	0	0	0.2	3.9	13
14		3.9	0	5.4	1.7	0	0.1	3.6	0	0	0	0	2.1	14
15		0	0	3.2	0	0	6.2	5.6	0.1	0	8.9	0.5	0	15
16	mm	0	0	0	0.8	0	0.4	0	0	0	0	0	0	16
17		0.5	0	0.6	0.5	0	0	0	0	0	1.7	6.5	0	17
18		0	0	1.0	0	0	0	0	8.4	0	15.9 +	3.1	0.3	18
19		0	0	0	0	2.8	0	0	15.0	0	15.3	0	0	19
20		0.1	0	0	0	34.4 +	26.5 +	0	20.2 +	0	0	0	7.0	20
21		0	0	0	0	4.9	0.5	3.8	0	0	14.0	0	2.3	21
22		0	0	0	0	0	0.1	0	0	6.1	0.1	0	6.1	22
23		0	0	0	0	0	0	0	0	9.8	0	0	1.9	23
24	+ Maximum	0	0	0	1.1	0	0	0	0	3.5	0	0	4.6	24
25		0	0	1.8	0	6.3	0	0	0	0.1	0	0	4.4	25
26		0.1	0	0.5	6.9	0	0	9.5	0	2.6	0	0	1.3	26
27		1.7	0	0	8.6	0	0	23.5	0	6.0	0.9	2.2	10.3 +	27
28		0.7	0	0	3.1	8.8	0	61.2 +	0.1	1.9	1.8	1.5	2.5	28
29		0	0	0	0	0	0	0	1.3	0	2.6	14.2 +	0	29
30		0	0	0	0	0	0	4.8	0	0.6	7.8	0	0	30
31		0.4	0	0	0	0	0	0	0	0	0	0	0	31

Monatssumme	31.2 -	38.8	35.9	59.6	102.6	76.6	125.7 +	92.6	52.4	117.8	55.4	55.7	mm	
Niederschlagstage	10	6 -	10	9	11	9	9	9	7	15 +	12	14	Tage	
Niederschlagstage grösser oder gleich als [mm]			164 >= 0.1	56 >= 5		22 >= 10		7 >= 20		1 >= 50		>= 100		Tage
Jahreswerte	Gesamtniederschlag 844.3 mm				Niederschlagstage 121 Tage									



Periode	2000 - 2019 (ohne: 2011, 2013) (18 Jahre)												
Mit Monatssumme	{53.6}	{45.3} -	59.4	80.0	{110.8}	{94.3}	113.7 +	100.6	74.2	80.8	71.4	61.5	mm
Max Tagessumme Jahr	{20.3} - 2016	{21.1} 2009	39.8 2006	52.8 2006	{69.5} 2016	{45.7} 2000	71.1 + 2012	63.1 2007	62.1 2006	44.6 2014	40.0 2012	33.3 2010	mm
Periode	Max Gesamtniederschlag {1285.4} (2002)				Min Gesamtniederschlag {630.0} (2003)								



Niederschlag

Rüti - Himmelried

SO 611/252/004

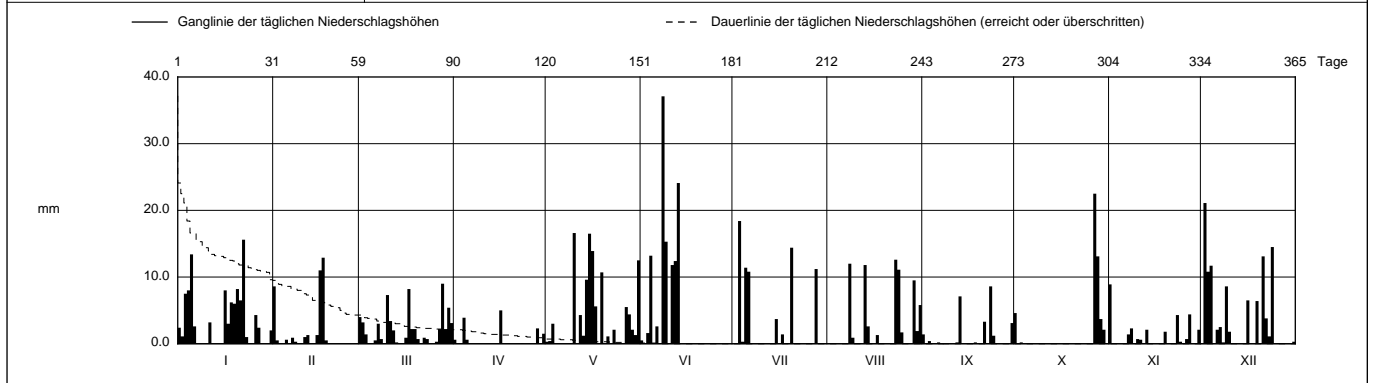
Daten unvollständig { ... }

Koordinaten 2 611 905 / 1 252 070

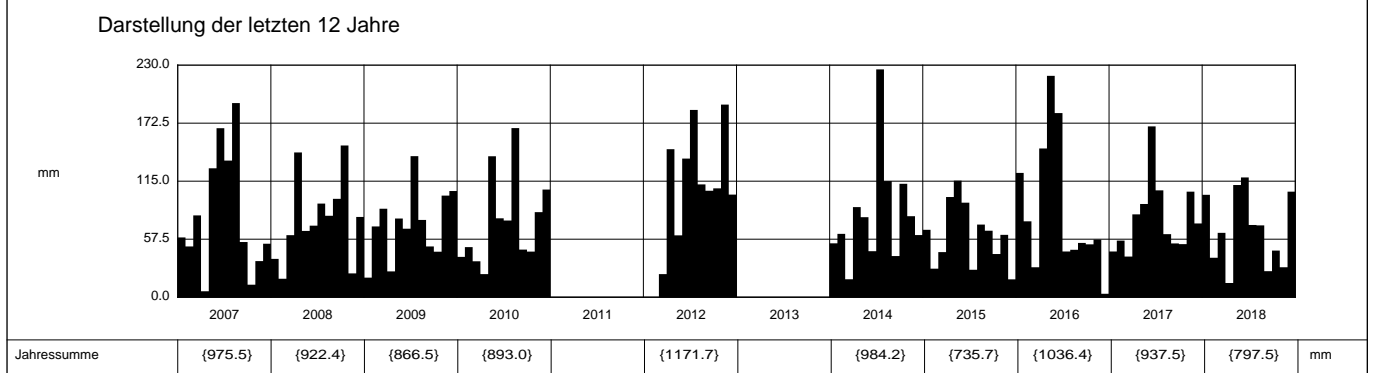
Stations Höhe 645.0 müM

Fläche - km2

2018		Jan	Feb	März	April	Mai	Juni	Juli	Aug	Sept	Okt	Nov	Dez			
1		2.4	8.6	4.0	0.6	0.3	0.5	0	0	1.4	4.6	8.9 +	0	1		
2		1.1	0.5	3.2	0	0.4	0	0	0	0	0	0	21.1 +	2		
3		7.5	0	1.4	0	3.0	1.6	18.4 +	0	0.4	0.2	0	10.8	3		
4		8.0	0	0	3.9	0	13.2	0.3	0	0	0	0	11.7	4		
5		13.4	0.6	0	0.6	0	0	11.4	0	0	0	0	0	5		
Tägliche Niederschlags-höhen																
6		2.6	0	0.5	0	0	2.6	10.8	0	0.2	0	0	2.1	6		
7		0	0.9	3.0	0	0	0.1	0	0	0	0	1.4	2.5	7		
8		0	0.3	0.7	0	0	37.1 +	0	12.0	0	0	2.3	0.2	8		
9		0	0	0	0	0.1	15.3	0	0.9	0	0	0	8.6	9		
10		0	0.1	7.3	0	16.6 +	0	0	0	0	0	0.7	1.8	10		
11		3.2	1.0	3.4	0	0	11.8	0	0	0	0	0.6	0	11		
12		0	1.3	2.0	0	4.3	12.4	0	0.2	0	0	0	0	12		
13		0	0	0.2	0	1.2	24.1	0	11.8	7.1	0	2.1	0	13		
14		0	0.1	0	0	9.6	0	0	2.6	0	0	0	0	14		
15		0.1	1.3	0.1	0	16.5	0	3.7	0	0	0	0	0	15		
mm																
16		8.0	11.0	0.9	5.0 +	13.9	0	0	0	0	0	0	6.5	16		
17		3.0	12.9 +	8.2	0	5.6	0	1.4	1.3	0	0	0	0	17		
18		6.2	0.5	2.2	0	0	0	0	0.2	0	0	0	0	18		
19		6.0	0	2.2	0	10.7	0	0	0	0	0	1.8	6.4	19		
20		8.2	0	0.7	0	0	0	14.4	0	0	0	0	0	20		
21		6.5	0	0	0	1.1	0	0	0	3.3	0	0.1	13.1	21		
22		15.6 +	0	0.9	0	0	0	0	0.1	0	0	0	3.8	22		
23		1.0	0	0.7	0.1	2.1	0	0	12.6 +	8.6 +	0	4.3	1.1	23		
+ Maximum																
24		0	0	0	0	0	0	0	11.1	1.2	0	0.3	14.5	24		
25		0	0	0	0	0	0	0	1.7	0	0	0	0	25		
26		4.3	0	0.3	0	0	0	0	0	0	0	0.7	0.1	26		
27		2.4	0	2.2	0	5.5	0	0	0	22.5 +	4.4	0	0	27		
28		0	0	9.0 +	2.3	4.4	0	11.2	0	13.1	0	0	0	28		
29		0	0	2.2	0.1	2.1	0	0	9.5	0	3.7	0	0	29		
30		0	0	5.4	1.5	1.3	0	0	1.9	3.1	2.1	2.1	0	30		
31		2.0	0	3.1	0	12.5	0	0	5.8	0	0	0.3	0	31		
Monatssumme		101.5	39.1	63.8	14.1 -	111.2	118.7 +	71.6	71.2	25.8	46.2	29.7	104.6	mm		
Niederschlagstage		18 +	6	15	4 -	16	8	7	10	6	5	8	13	Tage		
Niederschlagstage grösser oder gleich als [mm]		158 >= 0.1		55 >= 5			31 >= 10		4 >= 20		>= 50		>= 100		Tage	
Jahreswerte		Gesamtniederschlag 797.5 mm					Niederschlagstage 116 Tage									



Periode	2000 - 2018 (ohne: 2011, 2013) (17 Jahre)												
Mit Monatssumme	{55.0}	{45.7} -	60.8	81.2	{111.3}	{95.4}	113.0 +	101.2	75.5	78.6	72.3	61.8	mm
Max Tagessumme Jahr	{20.3} - 2016	{21.1} 2009	39.8 2006	52.8 2006	{69.5} 2016	{45.7} 2000	71.1 + 2012	63.1 2007	62.1 2006	44.6 2014	40.0 2012	33.3 2010	mm
Periode	Max Gesamtniederschlag {1285.4} (2002)					Min Gesamtniederschlag {630.0} (2003)							mm



Jahressumme	{975.5}	{922.4}	{866.5}	{893.0}		{1171.7}		{984.2}	{735.7}	{1036.4}	{937.5}	{797.5}	mm
-------------	---------	---------	---------	---------	--	----------	--	---------	---------	----------	---------	---------	----

Niederschlag

Rüti - Himmelried

SO 611/252/004

Daten unvollständig { ... }

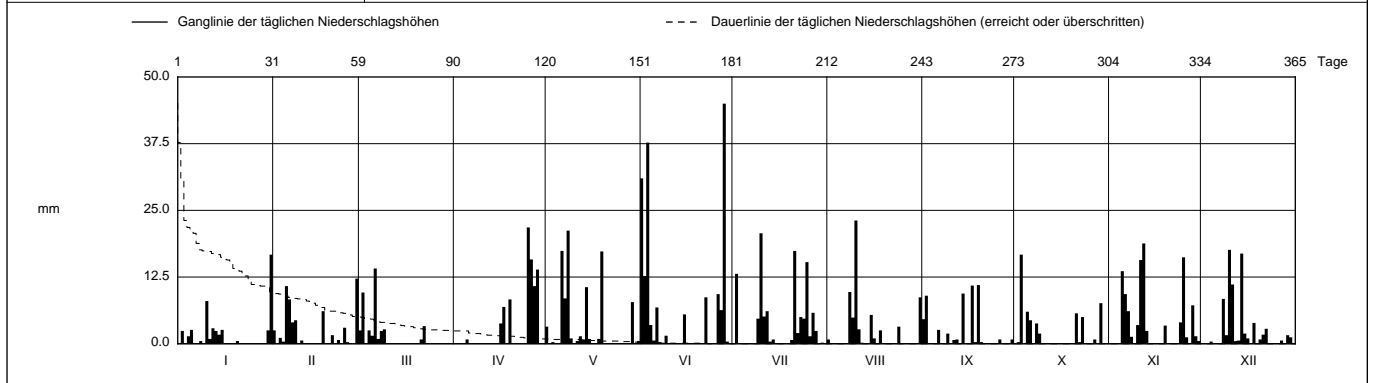
Koordinaten 2 611 905 / 1 252 070

Stations Höhe 645.0 müM

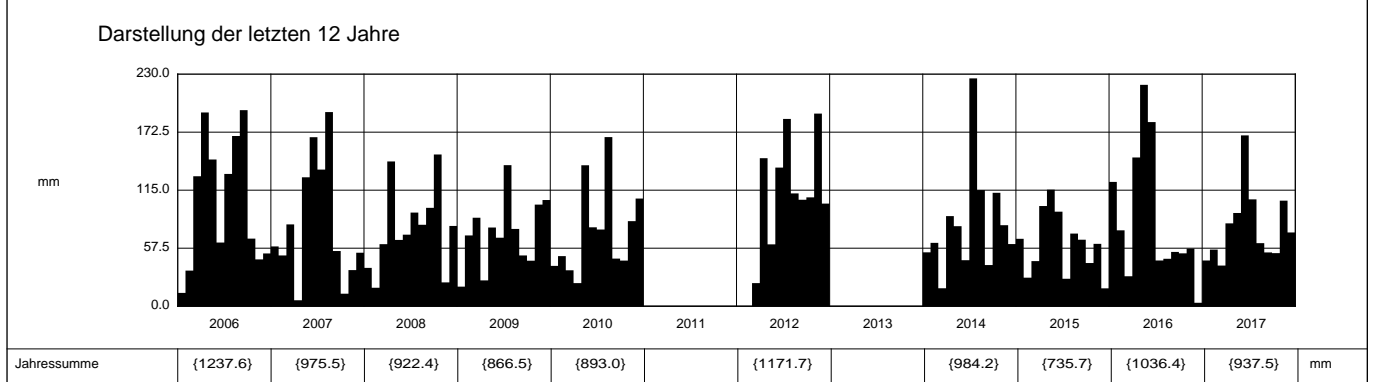
Fläche - km2

2017		Jan	Feb	März	April	Mai	Juni	Juli	Aug	Sept	Okt	Nov	Dez			
1		0	2.5	2.5	0	3.2	31.0	0	0.8	4.6	0	0	0.1	1		
2		2.4	0	9.6	0	0.1	12.7	13.1	0.1	9.0	0.3	0	0	2		
3		0	1.1	0	0	0.3	37.7	0.1	0.1	0	16.7 +	0	0.1	3		
4		1.4	0.4	2.5	0	0	3.5	0	0	0.1	0	0	0.4	4		
5		2.6	10.8	1.5	0.8	0	0.6	0	0	0	6.0	13.6	0	5		
Tägliche Niederschlags-höhen																
6		0	8.3	14.1 +	0	17.4	6.8	0	0	2.6	4.4	9.3	0	6		
7		0.1	4.0	0.9	0	8.5	0.3	0	0	0	0	6.1	0	7		
8		0.5	4.4	2.4	0	21.2 +	0	0	9.7	0	3.8	1.3	8.4	8		
9		0	0	2.7	0	1.0	1.5	4.7	4.9	1.9	1.9	0	1.6	9		
10		8.0	0.6	0	0	0	0	20.7 +	23.1 +	0	0	3.5	17.6 +	10		
11		0.9	0	0	0	0.5	0	5.1	2.7	0.7	0	15.7	11.1	11		
12		2.9	0	0	0	1.4	0	6.1	0.2	0.8	0	18.8 +	0.5	12		
13		2.4	0	0	0	0.8	0	0.4	0	0	0	2.4	0.6	13		
14		1.7	0	0	0	10.6	0	0.8	0	9.4	0	0	16.9	14		
15		2.6	0	0	0	0.9	5.5	0	5.4	0	0	0	1.9	15		
mm																
16		0.1	0	0	3.8	0	0	0	1.0	0	0	0	1.0	16		
17		0	6.1	0	6.9	0	0	0	10.9	0	0	0	0.1	17		
18		0	0	0	0	0.9	0	0	2.5	0.3	0	0	3.9	18		
19		0	0	0	8.3	17.3	0	0	0	11.0 +	0	3.4	0.1	19		
20		0.5	1.6	0	0	0	0	0.7	0	0.3	0.1	0	0.8	20		
21		0	0.1	0.8	0	0	0	17.4	0	0	5.7	0	1.7	21		
22		0	0.7	3.3	0	0	8.7	2.0	0	0	0.3	0	2.8	22		
23		0	0	0	0	0	0	5.0	0	0	5.0	0	0	23		
+ Maximum																
24		0	3.0	0	0	0	0	4.7	3.2	0	0	4.0	0	24		
25		0	0.3	0	21.8 +	0	0	15.3	0	0	0	16.2	0	25		
26		0	0	0	15.8	0	9.3	1.4	0	0.8	0	1.2	0.1	26		
27		0	0	0	10.8	0	6.3	5.8	0.1	0.1	0.8	0	0.6	27		
28		0	12.2 +	0	13.9	0	45.0 +	2.4	0	0	0	7.2	0	28		
29		0	0	0	0	7.8	0.4	0	0	0	7.6	1.4	1.6	29		
30		2.5	0	0	0	0	0	0.2	0	0.8	0	0.5	1.2	30		
31		16.7 +	0	0	0	0.5	0	0	8.7	0	0	0	0	31		
Monatssumme		45.3	56.1	40.3 -	82.1	92.4	169.3 +	105.9	62.5	53.3	52.6	104.6	73.1	mm		
Niederschlagstage		10	10	8	7 -	9	11	13	9	7 -	8	14 +	12	Tage		
Niederschlagstage grösser oder gleich als [mm]		174 >= 0.1		61 >= 5			31 >= 10		7 >= 20			>= 50		>= 100		Tage
Jahreswerte		Gesamtniederschlag 937.5 mm					Niederschlagstage 118 Tage									

Ganglinie der täglichen Niederschlagshöhen		----- Dauerlinie der täglichen Niederschlagshöhen (erreicht oder überschritten)																																			
1		31			59			90			120			151			181			212			243			273			304			334			365 Tage		



Periode	2000 - 2017 (ohne: 2011, 2013)												(16 Jahre)		
Mit Monatssumme	{51.9}	{46.2} -	60.6	85.4	{111.3}	{93.9}	115.6 +	103.0	78.6	80.6	75.0	59.1	mm		
Max Tagessumme Jahr	{20.3} - 2016	{21.1} 2009	39.8 2006	52.8 2006	{69.5} 2016	{45.7} 2000	71.1 + 2012	63.1 2007	62.1 2006	44.6 2014	40.0 2012	33.3 2010	mm		
Periode	Max Gesamtniederschlag {1285.4} (2002)					Min Gesamtniederschlag {630.0} (2003)									



Niederschlag

Rüti - Himmelried

SO 611/252/004

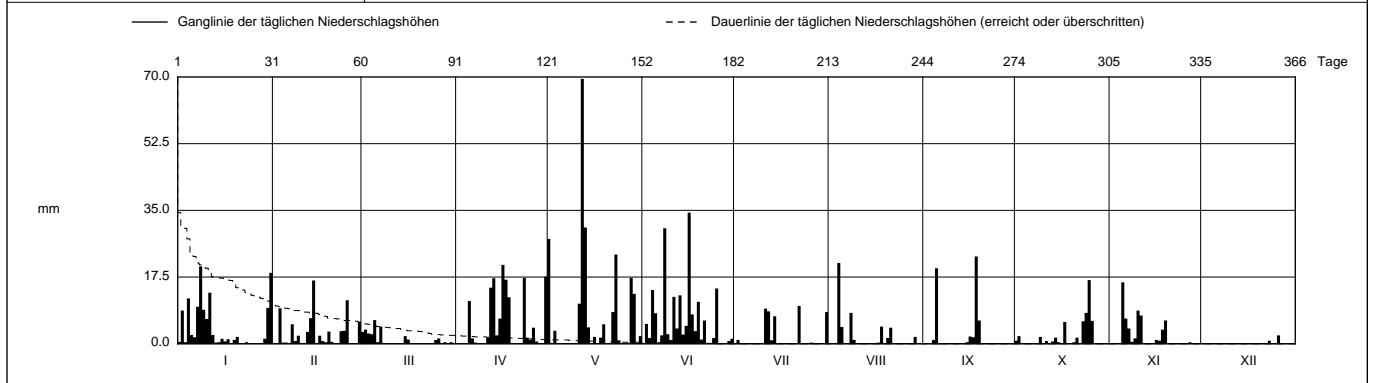
Daten unvollständig { ... }

Koordinaten 2 611 905 / 1 252 070

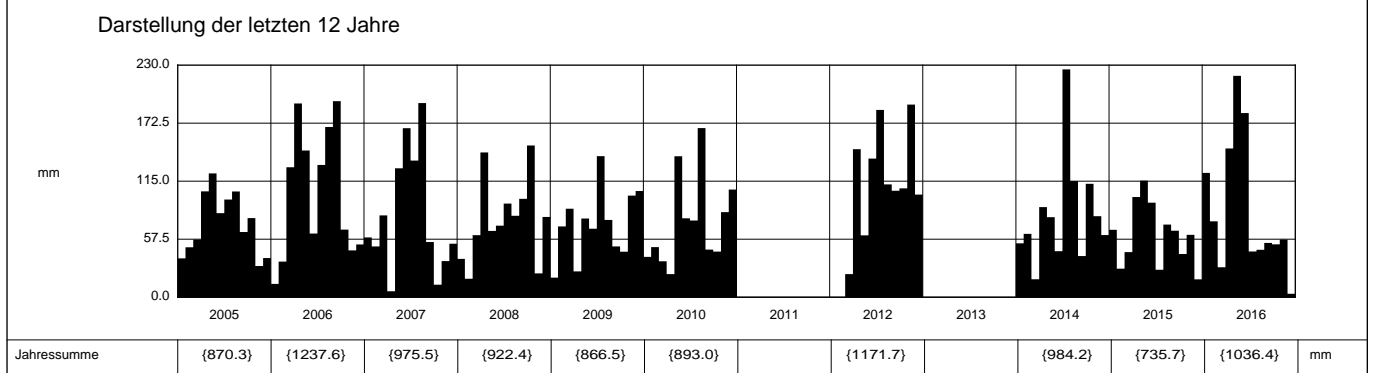
Stations Höhe 645.0 müM

Fläche - km2

2016	Jan	Feb	März	April	Mai	Juni	Juli	Aug	Sept	Okt	Nov	Dez	
1	0.5	0.2	3.1	0	27.5	0	0	0	0	0.8	0	0	1
2	8.7	0	3.7	0	0	5.2	1.0	0	0	2.0	0.2	0	2
3	0.4	9.3	2.7	0	3.4	1.5	0	0	0	0	0	0	3
4	11.9	0.3	2.5	0	0	14.1	0	21.2 +	1.0	0	0	0	4
5	2.3	0.3	6.2 +	11.2	0	8.0	0	4.4	19.8	0	16.1 +	0	5
Tägliche Niederschlags-höhen													
6	1.7	0	0.4	1.4	0	0	0	0	0	0	6.6	0	6
7	9.7	5.1	4.5	0.3	0	2.2	0	0	0	0	4.0	0	7
8	20.3 +	0.7	0.2	0	0	30.3	0	8.1	0	0	0.5	0	8
9	8.9	2.1	0	0.2	0	2.5	0	1.0	0	1.8	1.4	0	9
10	6.5	0	0	0	0.2	1.0	0	0	0	0	8.7	0	10
11	13.4	0	0	1.5	10.5	12.3	9.2	0	0	0.7	7.4	0.1	11
12	2.3	3.1	0	14.7	69.5 +	4.0	8.5	0	0	0	0	0	12
13	0.3	6.7	0	17.2	30.5	12.7	0.9	0	0	0.6	0.2	0	13
14	0.4	16.6 +	0	2.2	4.3	2.4	7.2	0	0	1.6	0	0	14
15	1.3	0.1	2.0	6.6	0	4.7	0	0	0.4	0.4	0	0	15
mm													
16	0.6	2.1	1.1	20.7 +	1.8	34.4 +	0	0	1.9	0	1.0	0	16
17	1.2	0.7	0	16.8	0	7.7	0	0.3	1.7	5.7	0.8	0	17
18	0	0.4	0	12.2	1.6	3.3	0	4.5	22.9 +	0	3.7	0	18
19	1.0	3.2	0	0	5.1	11.0	0	0	6.1	0.1	6.1	0	19
20	1.8	0.5	0	0	0	1.1	0	1.5	0	0.4	0	0	20
21	0	0	0	0	0	6.1	0	4.2	0	1.6	0	0	21
22	0	0	0	0	8.3	0	9.9 +	0	0	0	0	0.2	22
23	0.4	3.3	0	17.3	23.4	0	0	0	0	5.9	0	0.8	23
+ Maximum													
24	0.1	3.4	0	1.6	0.9	1.5	0	0	0	8.1	0	0.1	24
25	0	11.4	1.0	1.1	0	14.5	0	0	0	16.7 +	0	0	25
26	0	0	1.4	4.2	0	0	0.3	0	0	6.0	0	2.2 +	26
27	0	0	0	0.6	0	0	0	0	0	0	0.4	0	27
28	0.2	0	0.4	0	17.3	0	0	0	0	0	0	0	28
29	1.3	5.7	0.1	0	13.1	0.7	0	1.8	0	0	0	0	29
30	9.4	0	0.4	17.6	0	1.3	0	0	0	0	0	0	30
31	18.6	0	0	0	2.0	0	8.3	0	0	0	0	0	31
Monatssumme	123.2	75.2	29.7	147.4	219.4 +	182.5	45.3	47.0	53.8	52.4	57.1	3.4 -	mm
Niederschlagstage	17	12	10	15	14	22 +	6	8	6	9	9	1 -	Tage
Niederschlagstage grösser oder gleich als [mm]			175 >= 0.1	65 >= 5	33 >= 10	10 >= 20	1 >= 50						Tage
Jahreswerte			Gesamtniederschlag 1036.4 mm				Niederschlagstage 129 Tage						



Periode	2000 - 2016 (ohne: 2011, 2013) (15 Jahre)												
Mit Monatssumme	{52.3}	{45.5} -	61.9	85.6	{112.7}	{88.5}	116.3 +	105.7	80.3	82.5	73.0	58.2	mm
Max Tagessumme Jahr	{20.3} - 2016	{21.1} 2009	39.8 2006	52.8 2006	{69.5} 2016	{45.7} 2000	71.1 + 2012	63.1 2007	62.1 2006	44.6 2014	40.0 2012	33.3 2010	mm
Periode	Max Gesamtniederschlag {1285.4} (2002)					Min Gesamtniederschlag {630.0} (2003)						mm	



Jahressumme	{870.3}	{1237.6}	{975.5}	{922.4}	{866.5}	{893.0}		{1171.7}		{984.2}	{735.7}	{1036.4}	mm
--------------------	---------	----------	---------	---------	---------	---------	--	----------	--	---------	---------	----------	----

Niederschlag

Rüti - Himmelried

SO 611/252/004

Daten unvollständig { ... }

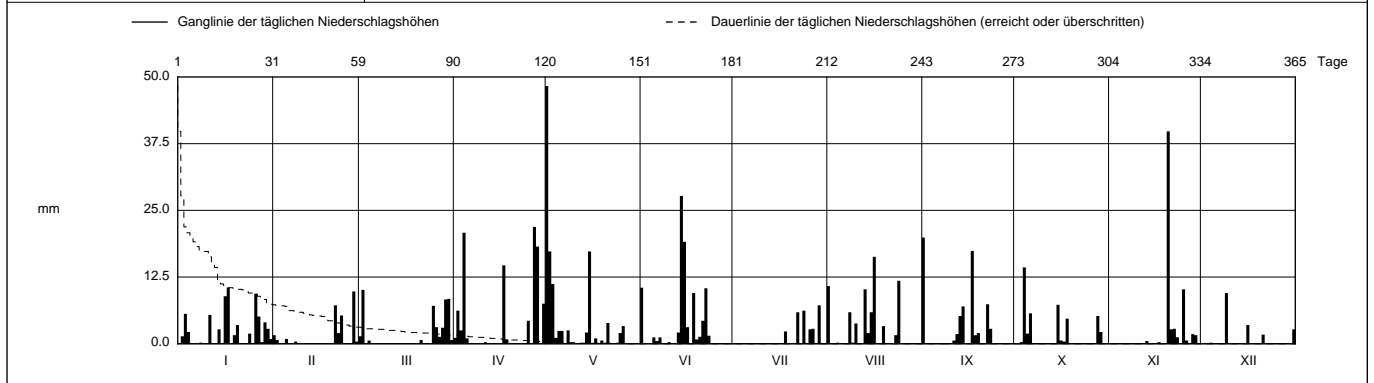
Koordinaten 611 905 / 252 070

Stations Höhe 645.0 müM

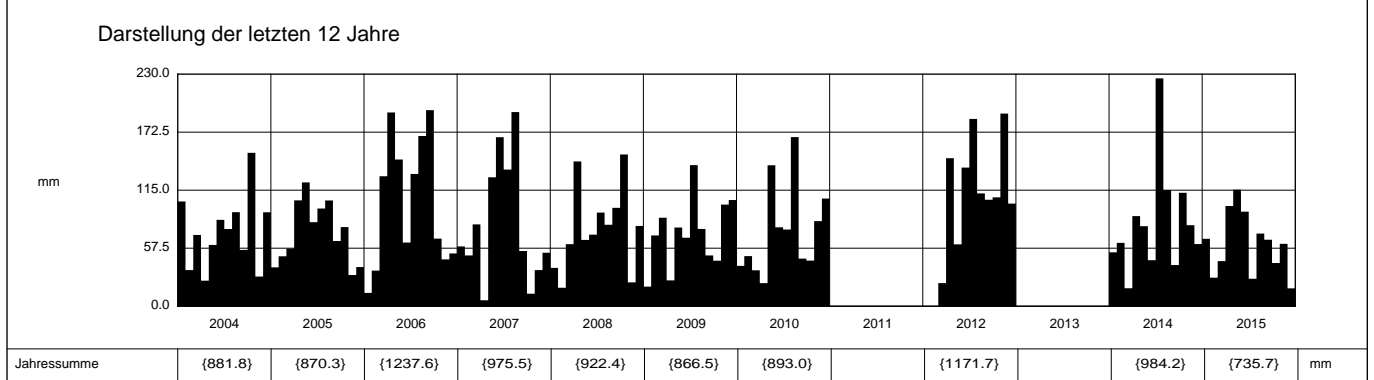
Fläche - km2

2015	Jan	Feb	März	April	Mai	Juni	Juli	Aug	Sept	Okt	Nov	Dez	
1	0.1	1.6	1.4	1.1	48.3 +	10.5	0	10.8	19.9 +	0	0	0	1
2	1.4	0.7	10.1 +	6.2	17.3	0	0	0	0	0	0	0	2
3	5.6	0	0	2.5	11.2	0	0	0	0	0.3	0	0	3
4	2.2	0	0.6	20.8	1.1	0	0	0.2	0	14.3 +	0	0.2	4
5	0	0.9	0	1.0	2.4	1.2	0	0	0	1.9	0	0	5
Tägliche Niederschlags-höhen													
6	0	0	0	0	2.4	0.5	0	0	0.1	5.7	0	0	6
7	0	0	0	0	0	1.2	0	0	0.1	0	0	0	7
8	0.2	0.4	0	0	2.5	0	0	5.9	0	0	0	0	8
9	0.1	0	0	0	0	0	0	0.2	0	0	0	9.5 +	9
10	0	0	0	0	0	0.3	0	3.8	0	0	0	0.1	10
11	5.4	0	0	0.3	0	0.1	0	0	0.6	0	0	0	11
12	0	0	0	0	0	0.1	0	0	1.8	0	0	0	12
13	0	0	0	0	0	2.1	0	10.2	5.2	0	0.5	0	13
14	2.7	0	0	0	2.1	27.7 +	0	2.0	7.0	0	0	0	14
15	0	0	0	0	17.3	19.1	0	5.9	0	7.3	0	0	15
mm													
16	8.9	0	0	0	0	3.1	0	16.3 +	0.1	0.6	0	3.5	16
17	10.5 +	0	0	14.7	1.0	0	0	0	17.4	0.4	0.3	0	17
18	0.1	0	0	0.8	0	9.5	2.3	0	1.6	4.7	0	0	18
19	1.6	0	0	0	0.6	0.8	0	3.3	2.0	0	0.1	0	19
20	3.5	0	0	0	0.1	1.3	0	0	0	0	39.8 +	0	20
21	0	7.2	0.7	0	3.9	4.3	0	0	0	0	2.7	1.7	21
22	0	2.0	0	0	0	10.4	5.9	0	7.4	0	2.8	0	22
23	0.1	5.3	0	0	0	1.5	0.1	1.6	2.8	0.1	1.2	0	23
+ Maximum													
24	1.9	0	0	0	0	0	6.2	11.8	0	0	0.1	0	24
25	0	0	7.1	4.3	2.0	0	0	0	0	0	10.2	0	25
26	9.4	0	3.1	0	3.3	0	2.7	0	0	0	0.6	0	26
27	5.1	9.8 +	1.3	21.9 +	0	0	2.8	0	0	0	0	0	27
28	0.3	0.4	3.0	18.2	0	0	0	0	0	5.2	1.8	0	28
29	4.0	0	8.3	0	0	0	7.2 +	0	0	2.2	1.6	0	29
30	2.8	0	8.4	7.5	0	0	0	0	0	0	0.1	0	30
31	0.9	0	0.7	0	0	0	0	0	0	0	0	2.7	31

Monatssumme	66.8	28.3	44.7	99.3	115.5 +	93.7	27.2	72.0	65.9	42.8	61.8	17.7 -	mm	
Niederschlagstage	14 +	5	8	10	13	12	6	10	9	7	7	4 -	Tage	
Niederschlagstage grösser oder gleich als [mm]	147 >= 0.1		49 >= 5			23 >= 10		5 >= 20		>= 50		>= 100		Tage
Jahreswerte	Gesamtniederschlag 735.7 mm					Niederschlagstage 105 Tage								



Periode	2000 - 2015 (ohne: 2011, 2013) (14 Jahre)												
Mit Monatssumme	{46.9}	{43.2} -	64.2	81.2	{104.5}	{81.2}	121.3 +	109.9	82.2	84.6	74.2	62.1	mm
Max Tagessumme Jahr	{18.1} - 2004	{21.1} 2009	39.8 2006	52.8 2006	{48.3} 2015	{45.7} 2000	71.1 + 2012	63.1 2007	62.1 2006	44.6 2014	40.0 2012	33.3 2010	mm
Periode	Max Gesamtniederschlag {1285.4} (2002)					Min Gesamtniederschlag {630.0} (2003)							



Niederschlag

Rüti - Himmelried

SO 611/252/004

Daten unvollständig { ... }

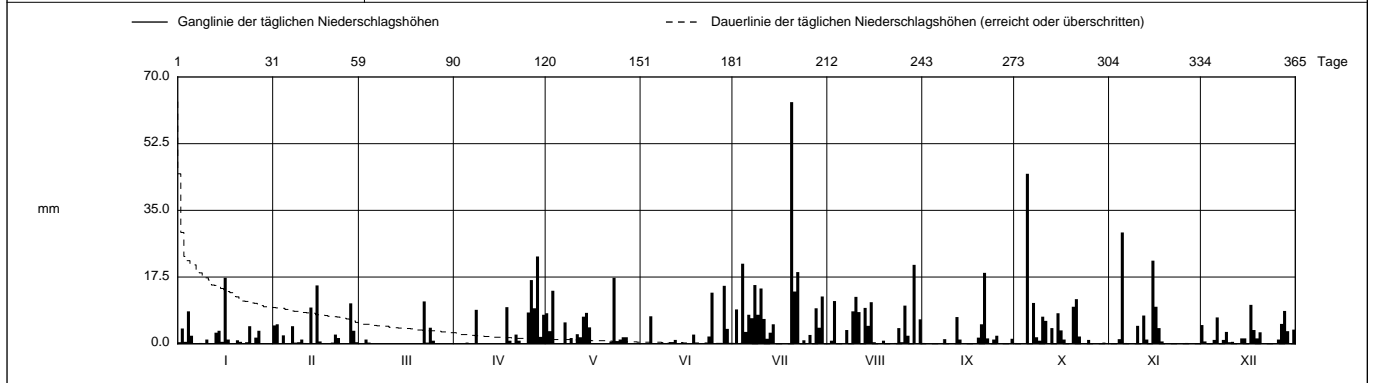
Koordinaten 611 905 / 252 070

Stations Höhe 645.0 müM

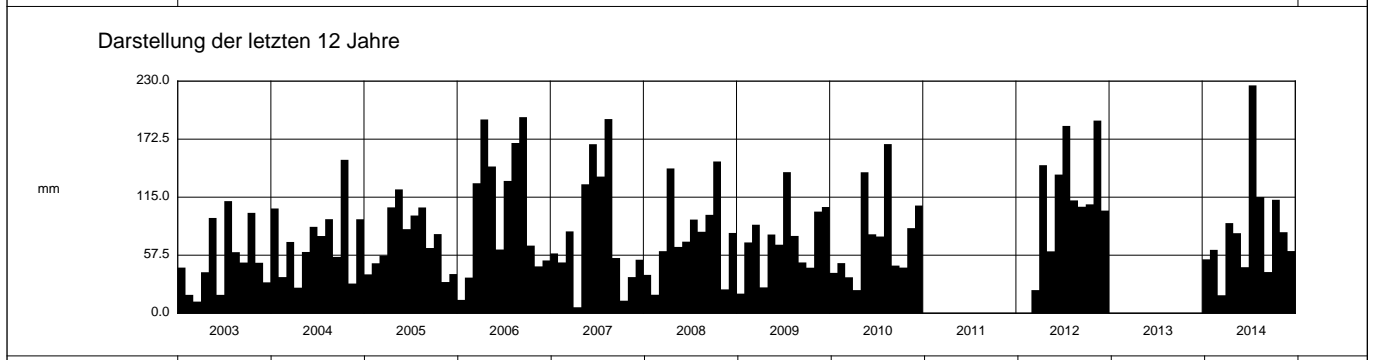
Fläche - km2

2014		Jan	Feb	März	April	Mai	Juni	Juli	Aug	Sept	Okt	Nov	Dez		
1		0.4	4.8	0	0	8.0	0	0	0	0.2	0.2	0	4.9	1	
2		4.0	5.1	0	0	3.3	0	9.0	0.8	0	0	0	0.6	2	
3		0.5	0	1.1	0	13.9	0	0	11.2	0	0	0	0.1	3	
4		8.5	2.2	0.3	0	0	7.2	21.0	0.1	0	0	1.2	0	4	
5		2.1	0.1	0	0.3	0	0.1	3.1	0.1	0.1	44.6 +	29.2 +	1.0	5	
6	Tägliche Niederschlags-höhen	0	0	0	0	0.1	0	7.6	0	0	0	0.2	6.9	6	
7		0	4.6	0	0	5.6	0	6.7	3.6	0	10.7	0.1	0.1	7	
8		0.2	0.3	0	8.9	0.1	0	15.4	0.1	1.2	1.7	0	1.0	8	
9		0	0.4	0	0	1.5	0	7.6	8.5	0	0.8	0	3.1	9	
10		1.1	1.1	0	0	0	0.3	14.5	12.3	0	7.1	4.7	0.4	10	
11		0	0.2	0	0	2.5	0	6.5	8.3	0	6.0	0	0.5	11	
12		0	0	0	0	1.7	1.0	1.3	0	7.0	0	7.4	0	12	
13		2.9	9.5	0	0	7.1	0	2.9	9.4	1.1	4.1	1.1	0	13	
14		3.4	0	0	0	8.1	0	5.1	4.7	0	0	0	1.4	14	
15		0.5	15.3 +	0	0	4.3	0	0	10.9	0	8.0	21.8	1.4	15	
16	mm	17.3 +	0.6	0	0	0	0	0.4	0	3.5	9.7	0	16		
17		1.1	0	0	0	0	0	0	0	1.1	4.1	10.2 +	17		
18		0	0	0	9.6	0	2.4	0	0	0	0.6	3.6	18		
19		0	0	0	0.8	0	0	0	0.8	1.6	0	1.4	19		
20		0.9	0.3	0	0	0	0	63.4 +	0	5.1	9.7	0	3.0	20	
21	0.5	2.4	0	2.4	0	0	13.7	0	18.6 +	11.7	0	0	21		
22	0	1.5	11.1 +	0.8	0.6	0	18.8	0	1.4	1.9	0	0	22		
23	0.4	0	0.3	0	17.3 +	1.9	0	0.2	0	0	0	0	23		
24	+ Maximum	4.6	0	4.2	0	0.7	13.4	0.9	4.1	1.1	0	0	24		
25		0	0	0.8	8.2	1.1	0	0	0.4	2.1	1.0	0	0	25	
26	1.6	10.6	0	16.7	1.7	0	2.3	10.0	0	0	0.2	1.1	26		
27	3.4	3.4	0	9.3	1.7	0	0	2.1	0	0	0	5.2	27		
28	0	0.4	0	22.9 +	0	15.2 +	9.3	0	0	0	0	8.6	28		
29	0	0	0	1.8	0	3.9	4.2	20.7 +	0	0	0	3.3	29		
30	0	0	0	7.6	0	0.2	12.4	0	1.3	0.3	0	0.1	30		
31	0	0	0	0	0	0	0.1	6.4	0	0	0	3.7	31		
Monatssumme		53.4	62.8	17.8 -	89.3	79.3	45.6	225.8 +	115.1	40.8	112.4	80.3	61.6	mm	
Niederschlagstage		11	11	3 -	9	14	7	19 +	13	10	13	8	16	Tage	
Niederschlagstage grösser oder gleich als [mm]		186 >= 0.1		64 >= 5			29 >= 10		7 >= 20		1 >= 50		>= 100		Tage
Jahreswerte		Gesamtniederschlag 984.2 mm					Niederschlagstage 134 Tage								

Ganglinie der täglichen Niederschlagshöhen		----- Dauerlinie der täglichen Niederschlagshöhen (erreicht oder überschritten)													
mm		1	31	59	90	120	151	181	212	243	273	304	334	365	Tage
mm		70.0													
mm		52.5													
mm		35.0													
mm		17.5													
mm		0.0													



Periode	2000 - 2014 (ohne: 2011, 2013) (13 Jahre)												
Mit Monatssumme	{45.2}	{44.4} -	65.7	79.8	{103.5}	{80.2}	128.6 +	112.9	83.4	87.9	75.1	65.5	mm
Max Tagessumme Jahr	{18.1} - 2004	{21.1} 2009	39.8 2006	52.8 2006	{30.4} 2002	{45.7} 2000	71.1 + 2012	63.1 2007	62.1 2006	44.6 2014	40.0 2012	33.3 2010	mm
Periode	Max Gesamtniederschlag {1285.4} (2002)					Min Gesamtniederschlag {630.0} (2003)							mm



Jahressumme	{630.0}	{881.8}	{870.3}	{1237.6}	{975.5}	{922.4}	{866.5}	{893.0}		{1171.7}		{984.2}	mm
-------------	---------	---------	---------	----------	---------	---------	---------	---------	--	----------	--	---------	----

Niederschlag

Rüti - Himmelried

SO 611/252/004

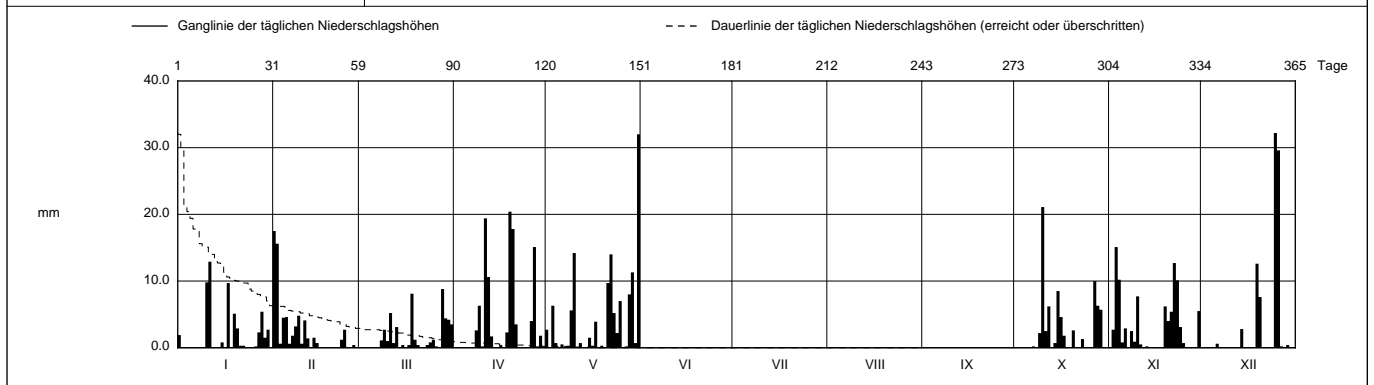
Daten unvollständig { ... }

Koordinaten 611 905 / 252 070

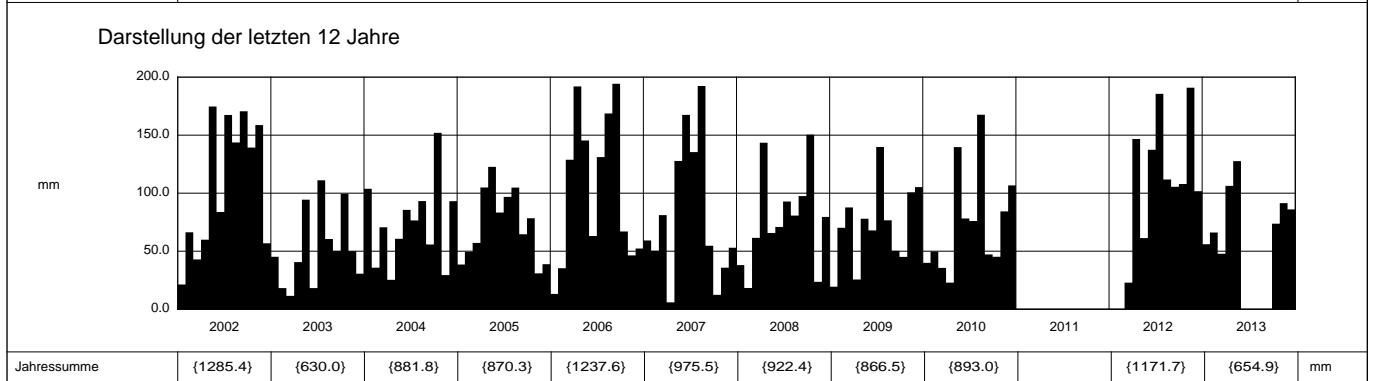
Stations Höhe 645.0 müM

Fläche - km2

2013		Jan	Feb	März	April	Mai	Juni	Juli	Aug	Sept	Okt	Nov	Dez	
Tägliche Niederschlags-höhen	1	1.9	17.5 +	0	0	2.7	{ }	{ }	{ }	{ }	{0 }	0	0	1
	2	0	15.6	0	0	0	{ }	{ }	{ }	{ }	0	2.7	0	2
	3	0	0.6	0	0	6.3	{ }	{ }	{ }	{ }	0	15.1 +	0	3
	4	0	4.5	0	0	0.7	{ }	{ }	{ }	{ }	0	10.2	0	4
	5	0	4.6	0	0	0	{ }	{ }	{ }	{ }	0	0.8	0	5
	6	0	0.6	0	0	0.5	{ }	{ }	{ }	{ }	0	2.9	0.6	6
	7	0	1.8	0	0	0	{ }	{ }	{ }	{ }	0.2	0	0	7
	8	0	3.2	1.1	2.6	0.3	{ }	{ }	{ }	{ }	0	2.5	0	8
	9	0	4.8	2.7	6.3	5.6	{ }	{ }	{ }	{ }	2.2	0.9	0	9
	10	9.8	0.6	1.0	0.2	14.2	{ }	{ }	{ }	{ }	21.1 +	7.7	0	10
	11	12.9 +	4.1	5.2	19.4	0	{ }	{ }	{ }	{ }	2.5	0.5	0	11
	12	0	1.4	0.7	10.6	0.7	{ }	{ }	{ }	{ }	6.2	0	0	12
	13	0	0.1	3.1	1.7	0	{ }	{ }	{ }	{ }	0	0.2	0	13
	14	0.1	1.5	0	0	0	{ }	{ }	{ }	{ }	0.7	0	2.8	14
	15	0.8	0.7	0.4	0	1.5	{ }	{ }	{ }	{ }	8.5	0.1	0	15
	mm	16	0.1	0	0	0.4	0.3	{ }	{ }	{ }	4.6	0	0	16
	17	9.7	0	0.4	0	3.9	{ }	{ }	{ }	{ }	1.8	0	0	17
	18	0	0	8.1	2.3	0.1	{ }	{ }	{ }	{ }	0	0	0	18
	19	5.1	0	1.2	20.4 +	0.3	{ }	{ }	{ }	{ }	0	6.2	12.6	19
	20	2.9	0.1	0.4	17.8	0.1	{ }	{ }	{ }	{ }	2.6	4.0	7.6	20
	21	0.3	0	0	3.5	9.7	{ }	{ }	{ }	{ }	0	5.4	0	21
	22	0.3	0.1	0	0	14.0	{ }	{ }	{ }	{ }	0	12.7	0	22
	23	0	1.2	0.4	0	5.2	{ }	{ }	{ }	{ }	1.3	10.1	0	23
	+ Maximum	24	0	2.7	0.8	0	2.2	{ }	{ }	{ }	0	3.1	0	24
	25	0	0	1.2	0	7.0	{ }	{ }	{ }	{ }	0	0.7	32.2 +	25
	26	0.2	0	0.2	4.0	0.1	{ }	{ }	{ }	{ }	0	0.1	29.6	26
	27	2.3	0.4	0	15.1	0.2	{ }	{ }	{ }	{ }	10.0	0	0.2	27
	28	5.4	0	8.8 +	0.2	8.0	{ }	{ }	{ }	{ }	6.3	0	0	28
	29	1.5	0	4.4	1.8	11.3	{ }	{ }	{ }	{ }	5.7	0	0.4	29
	30	2.7	0	4.2	0	0.7	{ }	{ }	{ }	{ }	0	5.5	0	30
	31	0	0	3.5	0	32.0 +	{ }	{ }	{ }	{ }	0	0	0	31
Monatssumme	56.0	66.1	47.8 -	106.3	127.6 +					{73.7}	91.4	86.0	mm	
Niederschlagstage	10	12	12	12	14 +					{12}	13	5 -	Tage	
Niederschlagstage grösser oder gleich als [mm]			{137} >= 0.1	{44} >= 5	{21} >= 10	{5} >= 20								Tage
Jahreswerte			Gesamtniederschlag {654.9} mm				Niederschlagstage {90} Tage							



Periode	2000 - 2013 (ohne: 2011) (13 Jahre)												
Mit Monatssumme	{45.4}	{44.7} -	68.0	81.1	{107.6}	{83.3}	{120.5} +	{112.7}	{87.0}	{85.8}	76.0	67.4	mm
Max Tagessumme Jahr	{18.1} - 2004	{21.1} 2009	39.8 2006	52.8 2006	{32.0} 2013	{45.7} 2000	{71.1} + 2012	{63.1} 2007	{62.1} 2006	{38.0} 2008	40.0 2012	33.3 2010	mm
Periode	Max Gesamtniederschlag {1285.4} (2002)						Min Gesamtniederschlag {630.0} (2003)						mm



Jahressumme	{1285.4}	{630.0}	{881.8}	{870.3}	{1237.6}	{975.5}	{922.4}	{866.5}	{893.0}		{1171.7}	{654.9}	mm
-------------	----------	---------	---------	---------	----------	---------	---------	---------	---------	--	----------	---------	----

Messstation im Umbau von Juni 2013 bis September 2013

Niederschlag

Rüti - Himmelried

SO 611/252/004

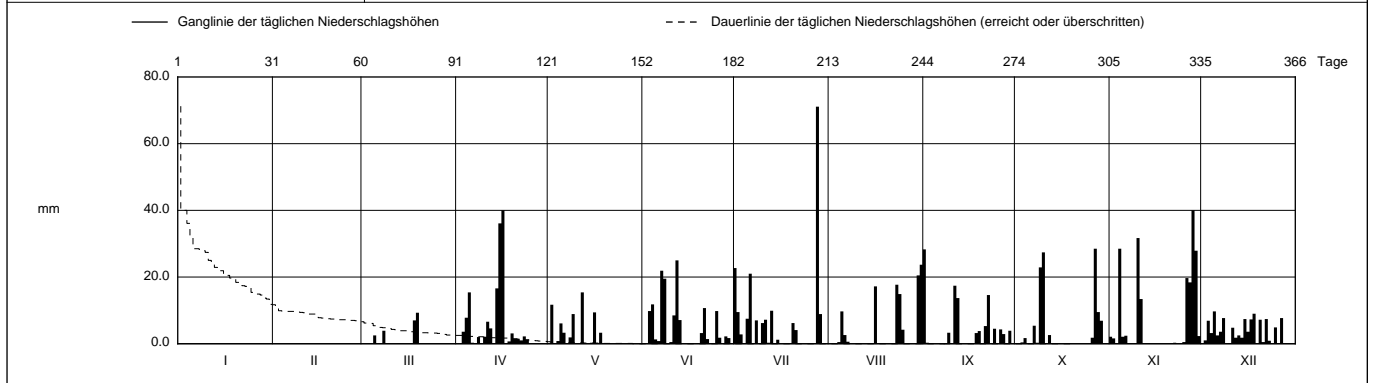
Daten unvollständig { ... }

Koordinaten 611 905 / 252 070

Stations Höhe 645.0 müM

Fläche - km2

2012		Jan	Feb	März	April	Mai	Juni	Juli	Aug	Sept	Okt	Nov	Dez	
1	{ }	{ }	{ }	0	0	0.1	{ }	22.7	0	28.3 +	0	2.1	0	1
2	{ }	{ }	{ }	0	0	11.7	{ }	9.5	0	0.3	0	1.6	0	2
3	{ }	{ }	{ }	0	3.6	0.1	{9.8}	2.8	0	0	0.4	0	6.9	3
4	{ }	{ }	{ }	0	7.8	0.8	11.8	0	0.5	0	1.7	28.5	3.2	4
5	{ }	{ }	{ }	2.5	15.4	6.1	1.3	7.5	9.7	0	0	2.1	9.7 +	5
6	{ }	{ }	{ }	0	0.3	3.3	0.8	21.0	2.6	0	0	2.4	2.5	6
7	{ }	{ }	{ }	0	0.1	0	21.9	0	0.6	0	5.4	0	3.6	7
8	{ }	{ }	{ }	3.9	2.0	1.9	19.5	7.0	0	0	0.3	0	7.7	8
9	{ }	{ }	{ }	0	0.1	8.9	0	0	0	3.3	22.9	0	0	9
10	{ }	{ }	{ }	0	2.1	0	0.5	6.2	0	0	27.4	31.7	0.2	10
11	{ }	{ }	{ }	0	6.6	0	8.5	7.2	0	17.4	0	13.4	4.8	11
12	{ }	{ }	{ }	0	4.6	15.4 +	25.0 +	0.3	0	13.7	2.6	0	1.8	12
13	{ }	{ }	{ }	0.1	0	0	7.1	9.9	0	0	0	0	2.5	13
14	{ }	{ }	{ }	0.1	16.6	0	0	0	0	0	0.2	0	1.8	14
15	{ }	{ }	{ }	0	36.1	0.3	0	1.2	0.2	0	0.2	0	7.4	15
16	{ }	{ }	{ }	0	40.0 +	9.4	0	0	17.2	0	0.1	0	3.6	16
17	{ }	{ }	{ }	0	0	0	0.1	0	0	0	0	0	7.3	17
18	{ }	{ }	{ }	7.0	0.7	{3.3}	0	0	0	3.2	0	0	9.0	18
19	{ }	{ }	{ }	9.3 +	3.1	{ }	0.2	0	0	3.8	0	0	0	19
20	{ }	{ }	{ }	0	1.5	{ }	3.2	6.2	0	0	0	0	7.2	20
21	{ }	{ }	{ }	0	1.5	{ }	10.7	4.1	0	5.3	0	0	0.5	21
22	{ }	{ }	{ }	0	1.0	{ }	1.4	0	0	14.6	0	0.3	7.4	22
23	{ }	{ }	{ }	0	2.2	{ }	0	0	17.7	0	0	0	0.9	23
24	{ }	{ }	{ }	0	1.2	{ }	0	0	14.9	4.5	0	0	0	24
25	{ }	{ }	{ }	0	0	{ }	9.8	0	4.2	0	0	0.5	4.9	25
26	{ }	{ }	{ }	0	0	{ }	1.8	0	0	4.3	1.8	19.7	0	26
27	{ }	0 +	0	0	0	{ }	0	0	2.9	28.5 +	18.4	7.7	0.1	27
28	{ }	0 +	0	0	0	{ }	2.2	71.1 +	0	0	9.5	40.0 +	0	28
29	{ }	0 +	0	0.2	0	{ }	1.7	8.9	0	3.9	6.9	27.9	0	29
30	{ }	{ }	{ }	0	0	{ }	0.1	0	20.5	0	0	2.3	0	30
31	{ }	{ }	{ }	0	0	{ }	{ }	0	23.7 +	0	0	0	0	31
Monatssumme			{0}-	22.9	146.7	{61.3}	{137.4}	185.6	111.8	105.5	107.9	190.9 +	101.7	mm
Niederschlagstage			{0}-	4	16	{8}	{15}	14	8	12	9	12	19 +	Tage
Niederschlagstage grösser oder gleich als [mm]				{149} >= 0.1	{66} >= 5	{33} >= 10	{17} >= 20	{1} >= 50				>= 100		Tage
Jahreswerte				Gesamtniederschlag {1171.7} mm				Niederschlagstage {117} Tage						



Periode	2000 - 2012 (ohne: 2011)												(12 Jahre)
Mit Monatssumme	{44.5}	{42.8}-	69.7	79.0	{105.8}	{83.3}	120.5 +	112.7	87.0	85.8	74.7	65.9	mm
Max Tagessumme Jahr	{18.1} - 2004	{21.1} 2009	39.8 2006	52.8 2006	{30.4} 2002	{45.7} 2000	71.1 + 2012	63.1 2007	62.1 2006	38.0 2008	40.0 2012	33.3 2010	mm
Periode	Max Gesamtniederschlag {1285.4} (2002)						Min Gesamtniederschlag {630.0} (2003)						mm

