

Niederschlag

Ried - Metzerlen

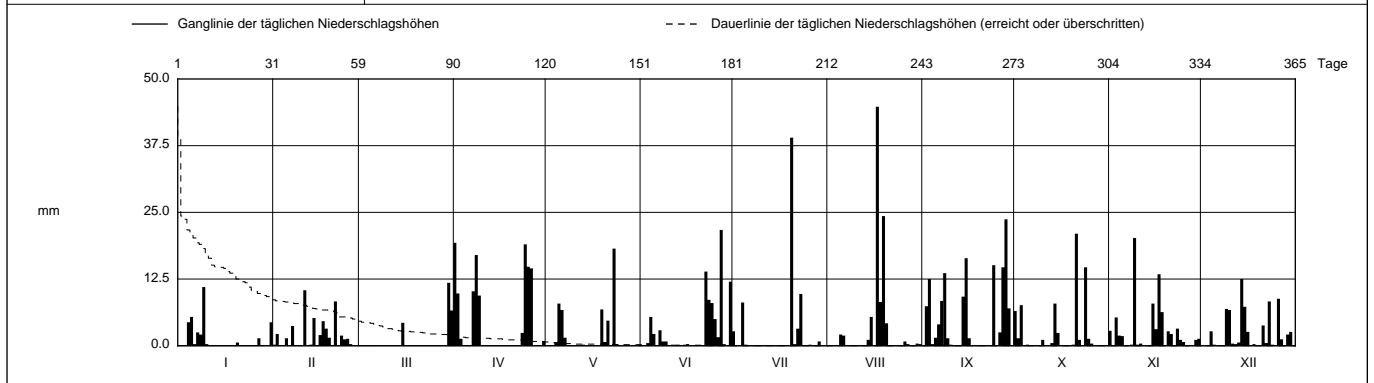
SO 601/256/016

Koordinaten 2 601 007 / 1 256 825

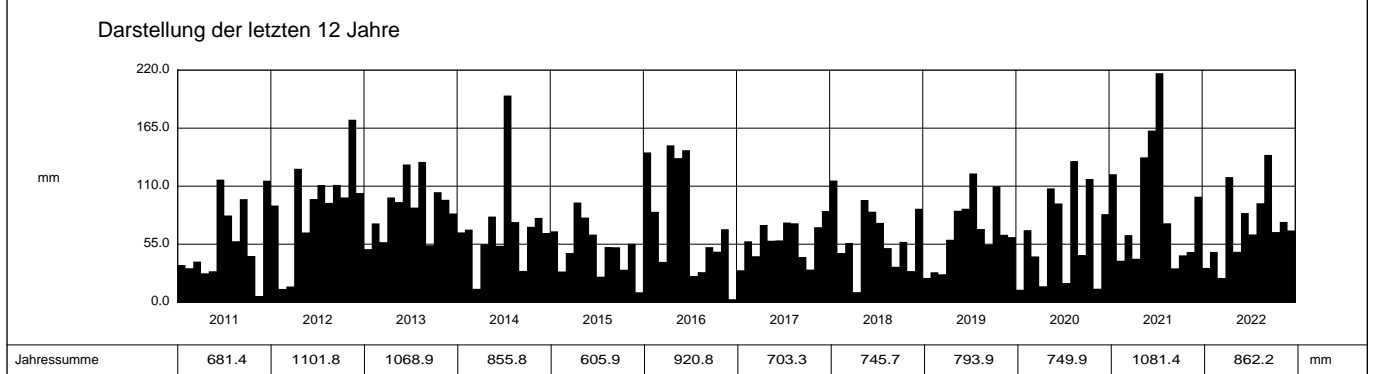
Stations Höhe 490.0 müM

Fläche - km2

2022		Jan	Feb	Mar	Apr	Mai	Jun	Jul	Aug	Sep	Okt	Nov	Dez	
1		0	0.2	0	19.3 +	0	0.1	2.7	0	0	6.5	2.8	0	1
2		0	2.2	0	9.8	0	0.1	0	0	7.4	1.4	0	0	2
3		0	0	0	1.3	0	0.5	0	0	12.5	7.6	5.3	0	3
4		4.4	0	0	0	0.7	5.4	8.1	0	0.3	0	1.9	2.7	4
5		5.4	1.4	0	0	7.9	2.2	0.2	2.1	1.5	0.2	1.8	0.2	5
Tägliche Niederschlags-höhen														
6		0.3	0	0	0	6.7	0.1	0	1.9	4.0	0	0	0	6
7		2.5	3.7	0	10.2	1.5	2.9	0	0	8.4	0	0.1	0	7
8		2.1	0	0	17.0	0	0.8	0	0	13.6	0	0.2	0	8
9		11.0 +	0	0.1	9.4	0	0.8	0	0	1.4	0	20.2 +	6.9	9
10		0.3	0	0	0	0	0	0	0	0.2	1.1	0.2	6.7	10
11		0	10.4 +	0	0	0	0	0	0	0.1	0	0.4	0.4	11
12		0	0	0	0	0	0	0	0	0.1	0	0.1	0.3	12
13		0	0.2	0	0	0.2	0.2	0	0	0	0.5	0	0.6	13
14		0	5.2	0.1	0	0	0	0	1.1	9.2	7.9	0	12.5 +	14
15		0	0	4.3	0	0	0	0	5.4	16.4	2.4	7.9	7.3	15
mm														
16		0	2.0	0	0	0	0.3	0	0	1.4	0	3.1	2.6	16
17		0	4.6	0	0	0	0	0	44.8 +	0	0	13.4	0	17
18		0	3.2	0	0	0	0	0	8.2	0	0	6.3	0.3	18
19		0	1.5	0	0	6.8	0	0	24.3	0	0	0	0	19
20		0.6	0	0	0	0.7	0	39.0 +	4.2	0	0.2	2.7	0	20
21		0	8.3	0	0	4.7	0	0.3	0	0	21.0 +	2.2	3.8	21
22		0	0.1	0	0	0	13.9	3.2	0	0	1.1	0.1	0.5	22
23		0	1.9	0	2.4	18.2 +	8.6	9.7	0	0	0	3.2	8.3	23
+ Maximum														
24		0	1.2	0	19.0	0.3	8.0	0	0	15.1	14.7	1.1	0.2	24
25		0	1.3	0	14.8	0	5.0	0	0	0.1	1.3	0.7	0	25
26		0	0.3	0	14.5	0	1.6	0.2	0.8	2.5	0.4	0	8.8	26
27		1.4	0	0	0	0	21.7 +	0	0.3	14.7	0.1	0	1.2	27
28		0.1	0	0	0	0	0.3	0	0	23.7 +	0	0	0	28
29		0	0	0	0	0	0	0.8	0	7.0	0	1.1	2.1	29
30		0	0	11.8 +	0.9	0	12.0	0	0.4	0	0	1.3	2.6	30
31		4.4	0	6.6	0	0.1	0	0	0.3	0	0.1	0	0	31
Monatssumme		32.5	47.7	22.9 -	118.6	47.8	84.5	64.2	93.8	139.6 +	66.5	76.1	68.0	mm
Niederschlagstage		7	13	3 -	10	6	10	5	8	15 +	10	15 +	12	Tage
Niederschlagstage grösser oder gleich als [mm]				172 >= 0.1	59 >= 5	27 >= 10	7 >= 20			>= 50			>= 100	Tage
Jahreswerte		Gesamtniederschlag 862.2 mm				Niederschlagstage 114 Tage								



Periode	2002 - 2022												(21 Jahre)
Mit Monatssumme	57.4	48.2 -	48.2 -	66.7	93.8 +	86.5	89.9	93.7	67.5	75.9	62.5	73.3	mm
Max Tagessumme Jahr	28.3 2021	21.1 - 2004	59.1 2006	44.1 2006	40.4 2020	49.1 2013	69.3 2019	77.0 + 2007	62.1 2008	54.8 2004	36.1 2012	33.2 2021	mm
Periode	Max Gesamtniederschlag 1115.4 (2002)						Min Gesamtniederschlag 580.6 (2003)						mm



Jahressumme	681.4	1101.8	1068.9	855.8	605.9	920.8	703.3	745.7	793.9	749.9	1081.4	862.2	mm
--------------------	-------	--------	--------	-------	-------	-------	-------	-------	-------	-------	--------	-------	----

Niederschlag

Ried - Metzleren

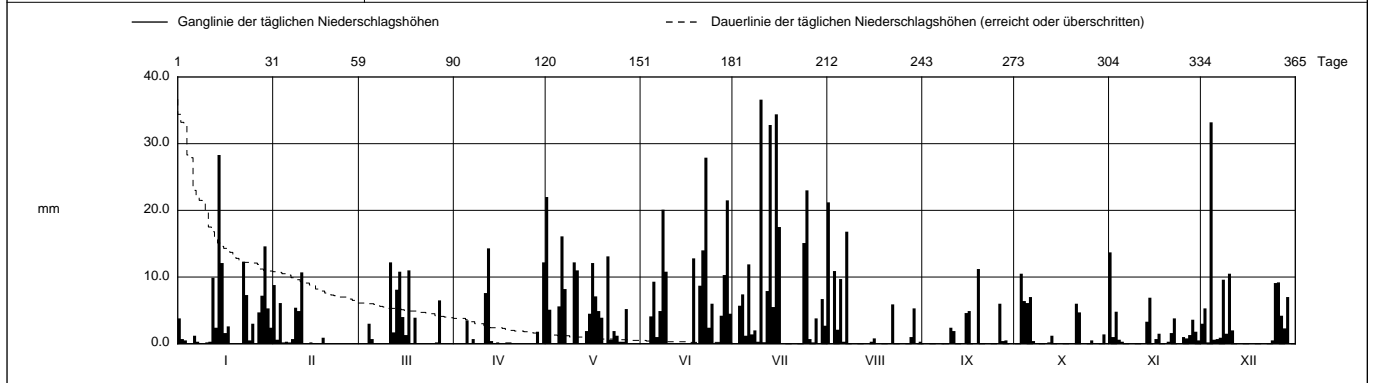
SO 601/256/016

Koordinaten 2 601 007 / 1 256 825

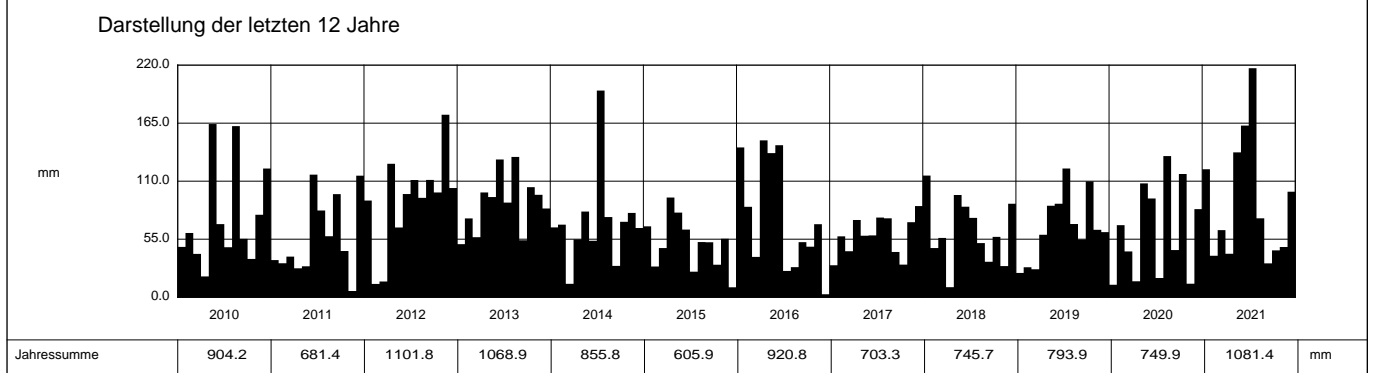
Stations Höhe 490.0 müM

Fläche - km2

2021	Jan	Feb	März	April	Mai	Juni	Juli	Aug	Sept	Okt	Nov	Dez	
1	3.8	8.8	0	0	22.0 +	0	0.1	21.2 +	0	0	13.7 +	3.0	1
2	0.7	0.6	0	0	5.1	0.1	0	0	0	0	1.0	5.3	2
3	0.5	6.1	0	0	0	0	5.7	10.9	0	10.5 +	4.8	0.2	3
4	0	0.2	3.0	0	0	4.1	7.4	2.1	0	6.4	0.6	33.2 +	4
5	0	0.3	0.7	3.5	5.6	9.3	1.2	9.7	0	6.1	0.3	0.6	5
Tägliche Niederschlags-höhen													
6	1.2	0.2	0	0	16.1	1.0	11.9	0.3	0	7.0	0	0.7	6
7	0.3	0.7	0	0.7	8.2	4.9	1.4	16.8	0	0.4	0	0.9	7
8	0.1	5.4	0	0	0	20.1	2.0	0	0	0	0	9.6	8
9	0	4.9	0	0	0	10.8	0.3	0	0	0	0	1.5	9
10	0.2	10.7 +	0	0	12.2	0.1	36.6 +	0	2.4	0	0	10.5	10
11	0.3	0	12.2 +	7.6	11.0	0	0.2	0	1.9	0	0	2.0	11
12	9.9	0	1.7	14.3 +	0.1	0	7.9	0	0	0.2	0	0	12
13	2.4	0.2	8.1	0.4	0	0	32.8	0	0	1.2	3.3	0	13
14	28.3 +	0.1	10.8	0.1	1.9	0	5.5	0	0	0	6.9	0	14
15	12.1 +	0.1	4.0	0.2	4.5	0	34.4	0.3	4.6	0	0	0	15
mm													
16	1.6	0	1.3	0	12.1	0	17.5	0.8	4.9	0	0.7	0.1	16
17	2.6	0.9	11.0	0	7.1	0	0	0	0	0	1.5	0	17
18	0	0	0.1	0.2	4.9	12.8	0	0	0	0	0	0	18
19	0	0	3.9	0.2	3.9	0	0	0	11.2 +	0	0	0	19
20	0	0	0.1	0	0	8.7	0	0	0.1	0	0.3	0.1	20
21	0	0	0	0	13.1	14.0	0	0.1	0.1	6.0	1.6	0	21
22	12.3	0	0	0	0.6	27.9 +	0	5.9	0	4.7	3.8	0	22
23	7.3	0	0	0	1.9	2.4	0	0	0	0	0.1	0	23
+ Maximum													
24	0.5	0	0	0	1.2	6.0	15.1	0	0	0	0	0.5	24
25	3.0	0	0	0	0.3	0	23.0	0	0	0	1.0	9.1	25
26	0	0	0.2	0	0.3	0	0.7	0	6.0	0.5	0.8	9.2	26
27	4.7	0.1	6.5	0	5.2	4.2	0.2	0	0.4	0	1.3	4.2	27
28	7.2	0	0	1.8	0	10.3	3.8	1.0	0.5	0	3.6	2.3	28
29	14.6	0	0	0	0	21.5	0	5.3	0	0	1.8	7.0	29
30	5.3	0	0	12.2	0	4.5	6.7	0.1	0	1.4	0.5	0	30
31	2.4	0	0	0	0	0	2.7	0.3	0	0	0	0	31
Monatssumme	121.3	39.3	63.6	41.2	137.3	162.7	217.1 +	74.8	32.1 -	44.4	47.6	100.0	mm
Niederschlagstage	16	5 -	10	5 -	17 +	16	17 +	8	6	8	12	12	Tage
Niederschlagstage grösser oder gleich als [mm]			197 >= 0.1	75 >= 5	38 >= 10	11 >= 20	>= 50	>= 100					Tage
Jahreswerte			Gesamtniederschlag 1081.4 mm				Niederschlagstage 132 Tage						



Periode	2002 - 2021											(20 Jahre)	
Mit Monatssumme	58.6	48.2 -	49.4	64.1	96.1 +	86.6	91.2	93.7	63.9	76.4	61.9	73.6	mm
Max Tagessumme	28.3	21.1 -	59.1	44.1	40.4	49.1	69.3	77.0 +	62.1	54.8	36.1	33.2	mm
Jahr	2021	2004	2006	2006	2020	2013	2019	2007	2008	2004	2012	2021	
Periode	Max Gesamtniederschlag 1115.4 (2002)					Min Gesamtniederschlag 580.6 (2003)							mm



Jahressumme	904.2	681.4	1101.8	1068.9	855.8	605.9	920.8	703.3	745.7	793.9	749.9	1081.4	mm
--------------------	--------------	--------------	---------------	---------------	--------------	--------------	--------------	--------------	--------------	--------------	--------------	---------------	-----------

Niederschlag

Ried - Metzleren

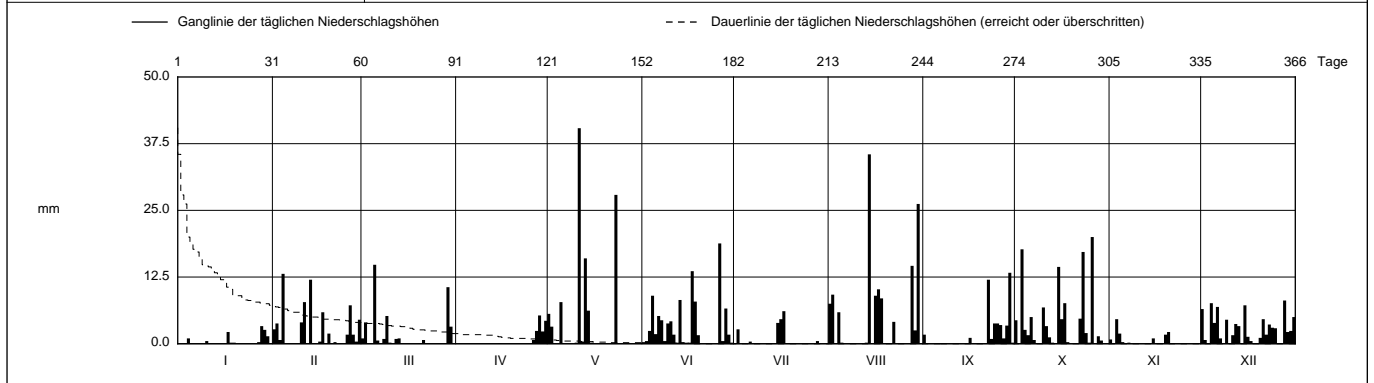
SO 601/256/016

Koordinaten 2 601 007 / 1 256 825

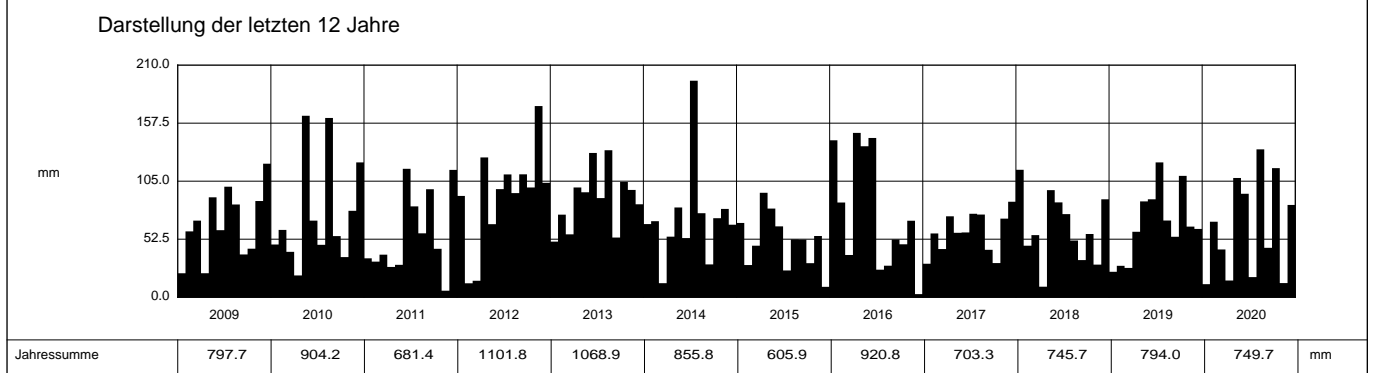
Stations Höhe 490.0 müM

Fläche - km2

2020	Jan	Feb	März	April	Mai	Juni	Juli	Aug	Sept	Okt	Nov	Dez	
1	0	2.7	1.0	0	5.6	0.3	0	7.5	1.7	4.4	0.8	6.5	1
2	0	3.8	4.0	0	3.2	0.5	2.7	9.2	0	0	0	0.7	2
3	0.1	0.7	0	0	0	2.4	0	0	0	17.7	4.6 +	0	3
4	1.0	13.1 +	0	0	0	9.0	0	5.9	0	2.6	1.9	7.6	4
5	0	0	14.8 +	0	7.8	1.8	0	0.2	0	1.6	0.3	3.9	5
Tägliche Niederschlags-höhen													
6	0	0	0.6	0	0	5.2	0.4	0	0	5.0	0	6.9	6
7	0	0	0	0	0	4.4	0	0	0	0.7	0.2	1.0	7
8	0	0	0.9	0	0	0.5	0	0	0	0.1	0	0	8
9	0	0	5.2	0	0	3.8	0	0	0	0.1	0	4.5	9
10	0.5	4.0	0.2	0	0.2	4.2	0	0	0	6.8	0	0.1	10
11	0	7.8	0	0	40.4 +	1.7	0	0	0	3.3	0	1.6	11
12	0	0	0.9	0	0.4	0.2	0	0	0	1.2	0	3.7	12
13	0	12.0	1.0	0	16.0	8.2	0	0.2	0	0.2	0	3.3	13
14	0	0.1	0	0	6.2	0.3	0	35.5 +	0	0.1	0	0	14
15	0	0	0	0.1	0.2	0	3.9	0	0	14.4	1.0	7.2	15
mm													
16	0	0.4	0	0	0	0.2	4.6	9.0	1.1	4.6	0.1	1.3	16
17	2.2	5.9	0	0	0	13.6	6.1 +	10.2	0	7.6	0	0.5	17
18	0.2	0	0	0	0	7.9	0	8.5	0	0.3	0	0.1	18
19	0.2	1.9	0	0	0	1.6	0	0.1	0	0	1.7	0	19
20	0	0.1	0.1	0	0	0	0	0	0	0	2.2	1.1	20
21	0	0.3	0.7	0	0	0	0	0	0	0	0	4.6	21
22	0	0	0	0	0	0	0	4.1	12.0	4.7	0	1.7	22
23	0	0	0	0	27.9	0	0	0	0.9	17.2	0	3.6	23
+ Maximum													
24	0	0	0	0	0	0	0	0.1	3.8	2.0	0	3.0	24
25	0	1.7	0	0	0	0	0	0	3.8	0.2	0	2.9	25
26	0	7.2	0	0.7	0	18.8 +	0	0	3.5	20.0 +	0	0	26
27	0.3	1.7	0	2.4	0	0.5	0	1.0	0	0	0	0	27
28	3.3 +	0.4	0	5.3 +	0	6.6	0.5	14.6	3.4	1.4	0	8.1 +	28
29	2.6	4.5	10.6	2.3	0	1.7	0	2.5	13.3 +	0.6	0	2.2	29
30	1.4	0	3.2	4.3	0	0.2	0	26.2	0.2	0	0	2.4	30
31	0	0	0	0	0	0	0	0	0	0	0	5.0	31
Monatssumme	11.8 -	68.3	43.2	15.1	107.9	93.6	18.2	133.8 +	44.7	116.8	12.8	83.5	mm
Niederschlagstage	5	12	7	4 -	7	15	4 -	11	9	16	5	21 +	Tage
Niederschlagstage grösser oder gleich als [mm]			170 >= 0.1	47 >= 5	19 >= 10	5 >= 20	>= 50	>= 100					Tage
Jahreswerte			Gesamtniederschlag 749.7 mm				Niederschlagstage 116 Tage						



Periode	2002 - 2020 (19 Jahre)												
Mit Monatssumme	55.3	48.6 -	48.7	65.3	93.9	82.6	84.6	94.7 +	65.6	78.1	62.6	72.2	mm
Max Tagessumme Jahr	22.6 2016	21.1 - 2004	59.1 2006	44.1 2006	40.4 2020	49.1 2013	69.3 2019	77.0 + 2007	62.1 2008	54.8 2004	36.1 2012	32.7 2013	mm
Periode	Max Gesamtniederschlag 1115.4 (2002)						Min Gesamtniederschlag 580.6 (2003)						mm



Jahressumme	797.7	904.2	681.4	1101.8	1068.9	855.8	605.9	920.8	703.3	745.7	794.0	749.7	mm
--------------------	--------------	--------------	--------------	---------------	---------------	--------------	--------------	--------------	--------------	--------------	--------------	--------------	-----------

Niederschlag

Ried - Metzleren

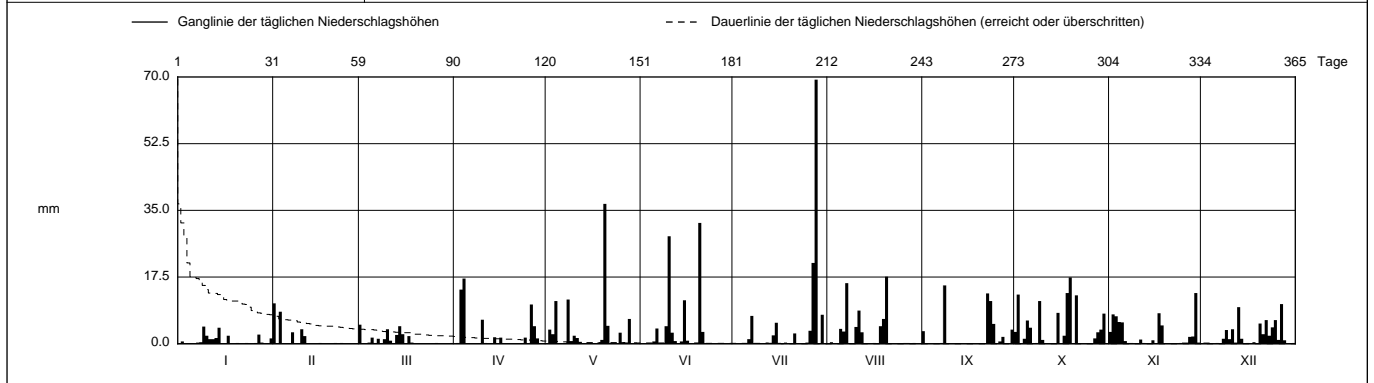
SO 601/256/016

Koordinaten 2 601 007 / 1 256 825

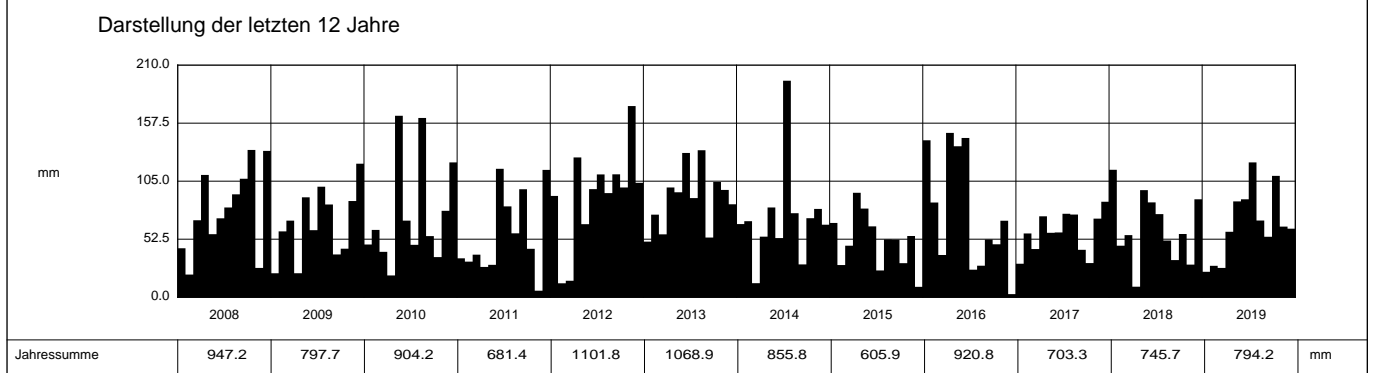
Stations Höhe 490.0 müM

Fläche - km2

2019		Jan	Feb	März	April	Mai	Juni	Juli	Aug	Sept	Okt	Nov	Dez			
1		0	10.6 +	5.0 +	0	0.1	0	0	0.1	3.3	3.1	3.1	0.1	1		
2		0.6	0	0	0.2	3.7	0	0	0.4	0	12.9	7.7	0.3	2		
3		0	8.4	0	14.2	2.5	0	0	0	0	0	7.2	0.3	3		
4		0	0	0.3	17.1 +	11.2	0	0	0	0	1.3	5.7	0.1	4		
5		0.1	0	1.6	0	0	0.6	0.1	3.9	0.1	6.1	5.6	0	5		
6	Tägliche Niederschlags-höhen	0	0	0.2	0	0	4.0	1.2	3.2	0	4.2	0.7	0.2	6		
7		0.3	3.0	1.3	0	0	0	7.3	15.9	0.2	0.1	0.2	0	7		
8		0.4	0	0	0	11.6	0	0	0	15.3 +	0.2	0.2	1.3	8		
9		4.5 +	0	1.2	0	0.7	4.6	0.1	0.1	0.1	11.2	0	3.6	9		
10		2.1	3.8	3.8	6.3	2.1	28.2	0	4.4	0	1.0	0	1.2	10		
11		1.2	2.0	0.8	0.2	1.5	2.9	0.1	8.7	0	0	1.1	3.8	11		
12		1.2	0	0.1	0	0.5	0.7	0.3	3.0	0	0	0.2	0.3	12		
13		1.5	0	2.3	0	0	0	0.2	0	0	0	0	9.6	13		
14		4.2	0	4.6	1.7	0	0.6	2.2	0.1	0	0	0.1	1.3	14		
15		0	0	2.5	0	0	11.4	5.5	0	0	8.1	0.9	0	15		
16	mm	0	0.2	0	1.6	0	0.8	0	0.2	0	0	0.1	0.2	16		
17		2.1	0	2.0	0	0	0	0	0	0	2.1	8.0	0	17		
18		0	0	0.3	0	0.3	0	0.3	4.6	0	13.3	4.8	0.4	18		
19		0	0	0	0	1.0	0	0	6.5	0	17.4 +	0.1	0.1	19		
20		0.2	0	0	0	36.7 +	31.7 +	0.1	17.6 +	0	0	0	5.3	20		
21		0	0.2	0	0	4.7	3.1	2.7	0	0	12.7	0	2.5	21		
22		0	0	0	0	0	0	0.1	0	13.2	0	0.1	6.2	22		
23		0.2	0.2	0	0	0	0	0	0	11.2	0	0	2.1	23		
24	+ Maximum	0	0	0	1.6	0	0	0	0	5.2	0	0.2	4.3	24		
25		0	0	0.1	0	2.9	0	0.3	0.1	0	0.1	0.3	6.2	25		
26		0.2	0	0.2	10.3	0.4	0	3.4	0.2	0.6	0	0.3	1.0	26		
27		2.4	0	0	4.6	0	0	21.2	0.2	1.8	1.4	1.8	10.4 +	27		
28		0.3	0	0	1.4	6.5	0	69.3 +	0	0	3.0	1.9	0.9	28		
29		0	0	0	0	0	0	0	0.2	0	3.7	13.3 +	0	29		
30		0.1	0	0	0	0.3	0	7.6	0	3.7	7.9	0.3	0.1	30		
31		1.4	0	0.2	0	0	0	0	0	0	0	0.2	0.2	31		
Monatssumme		23.0 -	28.4	26.5	59.2	86.7	88.6	122.0 +	69.4	54.7	109.8	63.9	62.0	mm		
Niederschlagstage		9	5 -	9	9	11	7	9	9	7	16 +	11	14	Tage		
Niederschlagstage grösser oder gleich als [mm]		198 >= 0.1			46 >= 5			24 >= 10		5 >= 20		1 >= 50		>= 100		Tage
Jahreswerte		Gesamtniederschlag 794.2 mm					Niederschlagstage 116 Tage									



Periode	2002 - 2019 (18 Jahre)												
Mit Monatssumme	57.8	47.6 -	49.0	68.1	93.1 +	82.0	88.3	92.5	66.7	75.9	65.4	71.6	mm
Max Tagessumme	22.6	21.1 -	59.1	44.1	37.0	49.1	69.3	77.0 +	62.1	54.8	36.1	32.7	mm
Jahr	2016	2004	2006	2006	2016	2013	2019	2007	2008	2004	2012	2013	
Periode	Max Gesamtniederschlag 1115.4 (2002)						Min Gesamtniederschlag 580.6 (2003)						mm



Jahressumme	947.2	797.7	904.2	681.4	1101.8	1068.9	855.8	605.9	920.8	703.3	745.7	794.2	mm
-------------	-------	-------	-------	-------	--------	--------	-------	-------	-------	-------	-------	-------	----

Niederschlag

Ried - Metzleren

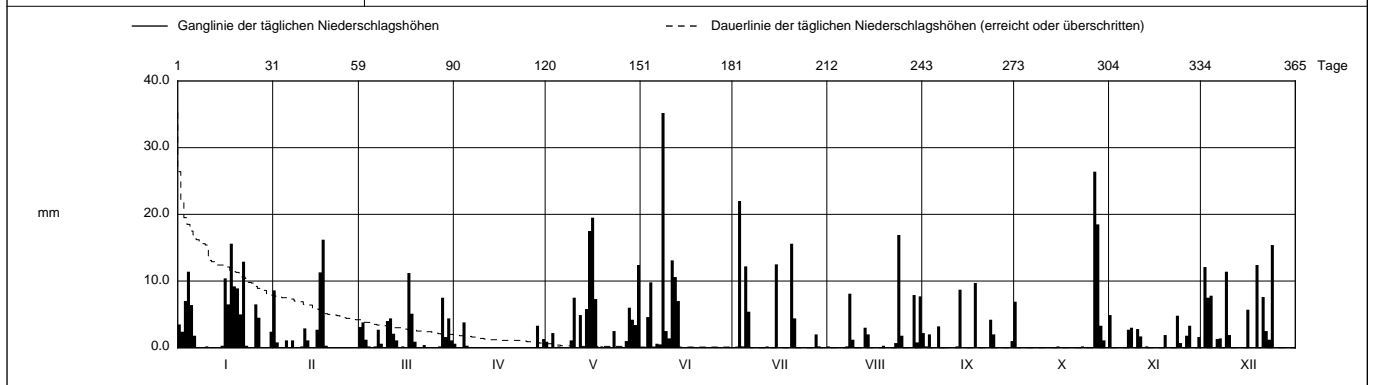
SO 601/256/016

Koordinaten 2 601 007 / 1 256 825

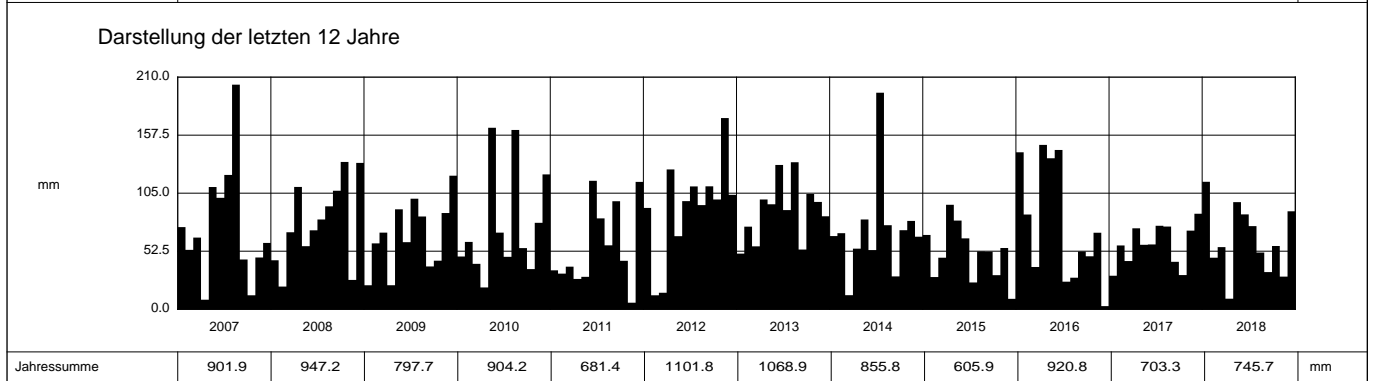
Stations Höhe 490.0 müM

Fläche - km2

2018	Jan	Feb	März	April	Mai	Juni	Juli	Aug	Sept	Okt	Nov	Dez	
1	3.5	8.6	3.1	0.6	0.9	0	0	0.2	2.2	6.9	4.9 +	0	1
2	2.4	0.8	3.8	0	0	0	0.1	0.1	0.2	0	0	12.1	2
3	7.0	0.1	1.2	0	2.2	4.6	22.0 +	0.1	2.0	0	0	7.5	3
4	11.4	0	0.2	3.8 +	0	9.8	0.2	0	0	0	0	7.8	4
5	6.4	1.1	0	0.3	0.2	0.1	12.2	0	0	0	0	0	5
Tägliche Niederschlags-höhen													
6	1.8	0	0.2	0	0	0.6	5.4	0	3.2	0	0	1.3	6
7	0	1.1	2.7	0	0	0.5	0	0.2	0	0	2.7	1.4	7
8	0	0.1	0.6	0	0.1	35.2 +	0	8.1	0	0	3.0	0.1	8
9	0	0	0	0.1	1.1	2.5	0	1.2	0	0	0	11.4	9
10	0.2	0.2	4.0	0	7.5	1.4	0	0.1	0.1	0	2.8	1.9	10
11	0	2.9	4.4	0	0	13.1	0	0.1	0	0	1.7	0	11
12	0	1.1	2.1	0	4.9	10.6	0.2	0	0.2	0.1	0	0	12
13	0	0.1	1.1	0	0.1	7.0	0	3.0	8.7	0	0.2	0	13
14	0	0	0	0	5.8	0.1	0	2.0	0	0.1	0	0	14
15	0.3	2.7	0.2	0	17.5	0	12.5	0	0	0.2	0	0.1	15
mm													
16	10.4	11.3	0.1	0.1	19.5 +	0.1	0	0	0	0.1	0	5.7	16
17	6.5	16.2 +	11.2 +	0	7.3	0	0	0	0	0.1	0	0.1	17
18	15.6 +	0.3	5.1	0	0.1	0	0	0	9.7 +	0	0	0	18
19	9.2	0	0.9	0	0.2	0	0	0.3	0	0	1.9	12.4	19
20	8.9	0	0.1	0	0	0.1	15.6	0	0	0	0	0.1	20
21	5.0	0	0	0	0	0	4.4	0	0	0	0	7.6	21
22	12.9	0	0.4	0	0	0.1	0	0	0.1	0.1	0	2.5	22
23	0.3	0	0	0	2.5	0	0.1	0.7	4.2	0.2	4.8	1.2	23
+ Maximum													
24	0	0	0	0	0	0	0.1	16.9 +	2.0	0	0.7	15.4 +	24
25	0	0	0	0	0	0	0.1	1.8	0	0	0	0	25
26	6.5	0	0	0	0	0	0	0.1	0	0.1	1.8	0	26
27	4.5	0	0.2	0	1.0	0	0.1	0	0	26.4 +	3.3	0	27
28	0	0	7.5	3.3	6.0	0	2.0	0	0	18.5	0	0	28
29	0	0	1.6	0	4.2	0	0.2	7.9	0	3.3	0.1	0	29
30	0.1	0	4.4	1.3	3.4	0	0	0.8	1.0	1.1	1.6	0	30
31	2.4	0	1.1	0	12.4	0	0	7.7	0	0	0	0	31
Monatssumme	115.3 +	46.6	56.2	9.5 -	96.9	85.8	75.2	51.3	33.6	57.2	29.5	88.6	mm
Niederschlagstage	16 +	8	14	3 -	14	8	7	8	8	5	10	13	Tage
Niederschlagstage grösser oder gleich als [mm]			187 >= 0.1	51 >= 5	24 >= 10	3 >= 20	>= 50	>= 100					Tage
Jahreswerte			Gesamtniederschlag 745.7 mm				Niederschlagstage 114 Tage						



Periode	2002 - 2018											(17 Jahre)	
Mit Monatssumme	59.8	48.7 -	50.3	68.7	93.5	81.6	86.3	93.9 +	67.4	73.9	65.5	72.2	mm
Max Tagessumme	22.6	21.1 -	59.1	44.1	37.0	49.1	38.6	77.0 +	62.1	54.8	36.1	32.7	mm
Jahr	2016	2004	2006	2006	2016	2013	2013	2007	2008	2004	2012	2013	
Periode	Max Gesamtniederschlag 1115.4 (2002)						Min Gesamtniederschlag 580.6 (2003)						mm



Jahressumme	2007	2008	2009	2010	2011	2012	2013	2014	2015	2016	2017	2018	mm
Jahressumme	901.9	947.2	797.7	904.2	681.4	1101.8	1068.9	855.8	605.9	920.8	703.3	745.7	mm

Niederschlag

Ried - Metzleren

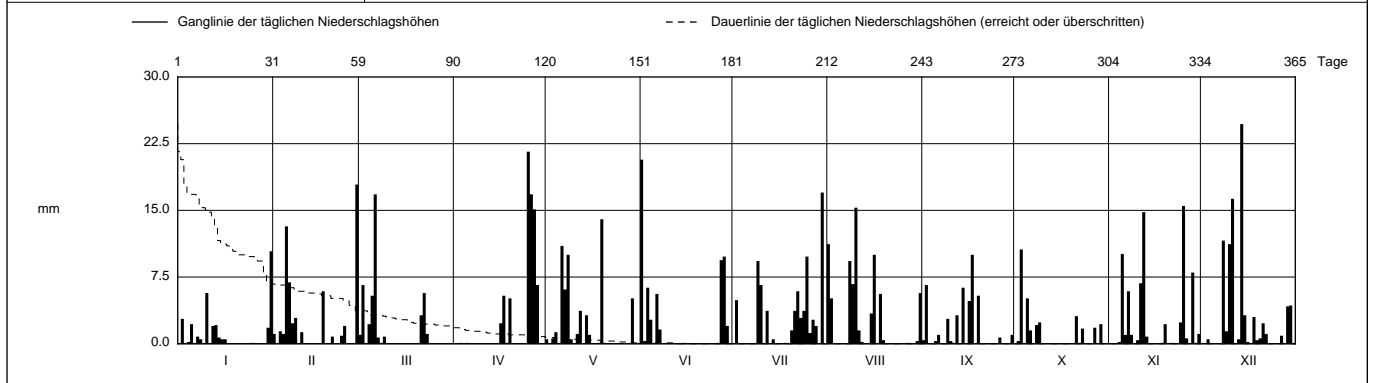
SO 601/256/016

Koordinaten 2 601 007 / 1 256 825

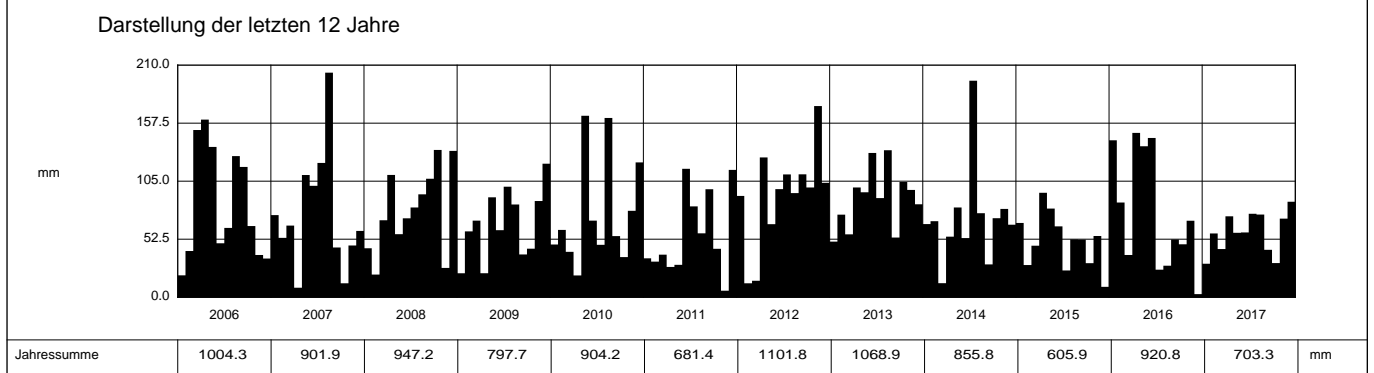
Stations Höhe 490.0 müM

Fläche - km2

2017	Jan	Feb	März	April	Mai	Juni	Juli	Aug	Sept	Okt	Nov	Dez	
1	0	1.1	1.0	0	0.5	20.7 +	0	11.2	0.4	0	0	0	1
2	2.8	0	6.6	0	0	0.3	4.9	5.1	6.6	0.3	0	0	2
3	0	1.4	0	0.1	0.6	6.3	0	0	0	10.6 +	0	0.5	3
4	0.2	1.1	2.2	0	1.3	2.7	0	0	0	0	0.2	0	4
5	2.2	13.2	5.4	0.1	0	0	0	0	0.3	5.1	10.1	0	5
Tägliche Niederschlags-höhen													
6	0	6.9	16.8 +	0	11.0	5.6	0	0	1.0	1.5	1.0	0	6
7	0.8	2.3	0.7	0	6.1	1.6	0	0	0	0	5.9	0	7
8	0.5	2.9	0.1	0	10.0	0	0	9.3	0	2.1	1.0	11.6	8
9	0	0	0.8	0	0.5	0	0	9.3	6.7	2.8	2.4	0	9
10	5.7	1.3	0	0	0	0	6.6	15.3 +	0.3	0	0.4	11.2	10
11	0	0	0	0	1.1	0	0	1.5	0.1	0	6.8	16.3	11
12	2.0	0	0	0	3.7	0	3.7	0.2	3.2	0	14.8	0	12
13	2.1	0	0	0	0	0	0	0	0	0	0.8	0.5	13
14	0.7	0	0	0	3.2	0	0.5	0	6.3	0	0	24.7 +	14
15	0.5	0	0	0	1.0	0.1	0	3.4	0	0	0	3.2	15
mm													
16	0.5	0	0	2.3	0	0	0	10.0	4.8	0	0	0.2	16
17	0	5.9	0	5.4	0	0	0	0	10.0 +	0	0	0	17
18	0	0	0	0.1	0.1	0	0.1	5.6	0	0	0.1	3.0	18
19	0	0	0	5.1	14.0 +	0	0	0.4	5.4	0	2.2	0.4	19
20	0	0.8	0	0	0.1	0	1.5	0	0	0	0	0.6	20
21	0	0	3.2	0	0	0	3.7	0	0	3.1	0.1	2.3	21
22	0	0	5.7	0	0	0	5.9	0	0	0.1	0	1.1	22
23	0	0.9	1.1	0	0	0	2.9	0	0	1.7	0	0	23
+ Maximum													
24	0	2.0	0	0	0	0	3.7	0	0	0	2.4	0	24
25	0.1	0	0	21.6 +	0	0	9.8	0	0	0	15.5 +	0	25
26	0	0	0	16.8	0	0.1	1.2	0	0.7	0	0.6	0	26
27	0	0	0	15.1	0	9.4	2.7	0.1	0	1.8	0	0.9	27
28	0	17.9 +	0	6.6	0	9.8	2.0	0	0	0	8.0	0	28
29	0	0	0	0	5.1	2.0	0	0	0	2.2	0.1	4.2	29
30	1.8	0	0	0	0	0	17.0 +	0.3	1.0	0	1.1	4.3	30
31	10.4 +	0	0	0	0	0	0	5.7	0	0	0	0	31
Monatssumme	30.3 -	57.7	43.6	73.2	58.3	58.6	75.5	74.8	42.9	30.9	71.1	86.4 +	mm
Niederschlagstage	7 -	11	8	7 -	10	8	14 +	10	9	9	11	11	Tage
Niederschlagstage grösser oder gleich als [mm]			164 >= 0.1	55 >= 5	24 >= 10	3 >= 20	>= 50	>= 100					Tage
Jahreswerte			Gesamtniederschlag 703.3 mm				Niederschlagstage 115 Tage						



Periode	2002 - 2017											(16 Jahre)	
Mit Monatssumme	56.3	48.8 -	49.9	72.4	93.3	81.4	87.0	96.6 +	69.5	75.0	67.7	71.1	mm
Max Tagessumme	22.6	21.1 -	59.1	44.1	37.0	49.1	38.6	77.0 +	62.1	54.8	36.1	32.7	mm
Jahr	2016	2004	2006	2006	2016	2013	2013	2007	2008	2004	2012	2013	
Periode	Max Gesamtniederschlag 1115.4 (2002)						Min Gesamtniederschlag 580.6 (2003)						mm



Jahressumme	1004.3	901.9	947.2	797.7	904.2	681.4	1101.8	1068.9	855.8	605.9	920.8	703.3	mm
--------------------	--------	-------	-------	-------	-------	-------	--------	--------	-------	-------	-------	-------	----

Niederschlag

Ried - Metzleren

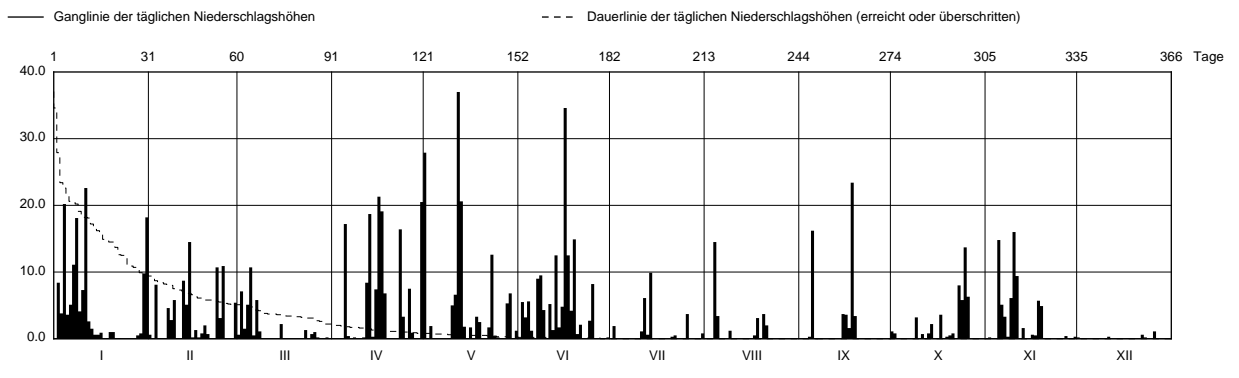
SO 601/256/016

Koordinaten 2 601 007 / 1 256 825

Stations Höhe 490.0 mÜM

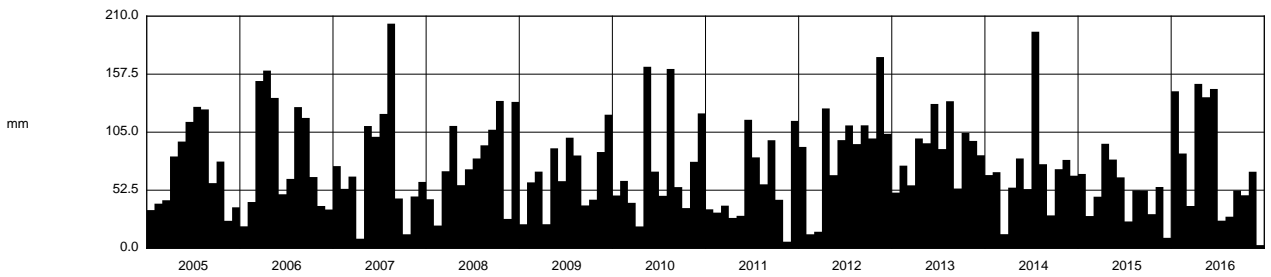
Fläche - km2

2016	Jan	Feb	März	April	Mai	Juni	Juli	Aug	Sept	Okt	Nov	Dez		
1	0	0.6	0.6	0	27.9	0	0	0	0	1.1	0	0.2	1	
2	8.4	0	7.1	0	0	5.5	1.9	0	0	0.8	0.2	0	2	
3	3.8	8.1	1.5	0	1.9	3.2	0	0	0	0	0	0	3	
4	20.2	0.1	5.1	0	0	5.6	0	14.5 +	0.3	0	0	0	4	
5	3.6	0	10.7 +	17.2	0	1.2	0	3.4	16.2	0	14.8	0	5	
Tägliche Niederschlags-höhen														
6	5.1	0	0.5	0.4	0	0	0	0	0	0	5.1	0	6	
7	11.1	4.6	5.8	0	0	9.0	0	0	0	0	3.3	0	7	
8	18.1	2.8	1.1	0.2	0	9.5	0	0	0	0	0.3	0.1	8	
9	4.1	5.8	0	0	0.1	4.3	0	1.2	0	3.2	6.1	0	9	
10	7.3	0.1	0	0	5.0	0.1	0	0.1	0	0	16.0 +	0	10	
11	22.6 +	0	0	0.2	6.6	5.2	1.1	0	0	0.7	9.4	0.3	11	
12	2.6	8.7	0	8.4	37.0 +	1.3	6.1	0	0	0	0	0	12	
13	1.5	5.1	0	18.7	20.6	12.5	0.6	0	0	0.8	1.6	0	13	
14	0.6	14.5 +	0	0.3	1.8	1.7	9.9 +	0	0	2.2	0	0	14	
15	0.6	0.2	2.2	7.4	0	4.8	0	0	3.7	0	0	0	15	
mm														
16	0.9	1.3	0.1	21.3 +	1.7	34.6 +	0	0	3.6	0	0.6	0	16	
17	0	0.2	0	19.1	0	12.5	0	0.5	1.6	3.6	0.5	0.1	17	
18	0.1	0.8	0	6.8	3.3	4.2	0	3.1	23.4 +	0.1	5.7	0	18	
19	1.0	2.0	0	0	2.5	14.9	0	0	3.4 +	0.3	4.9	0	19	
20	1.0	0.7	0	0	0	0.7	0	3.7	0	0.5	0	0	20	
21	0	0	0	0	0	2.1	0.3	2.0	0	0.8	0	0	21	
22	0.1	0	0	0	1.7	0	0.5	0	0	0	0	0.6	22	
23	0	10.7	1.3	16.4	12.6	0	0	0	0	8.0	0	0.2	23	
+ Maximum														
24	0	3.1	0	3.3	0.4	2.7	0	0	0	5.8	0	0.1	24	
25	0	10.9	0.7	0.1	0.2	8.2	0	0	0	13.7 +	0	0	25	
26	0	0	1.0	7.5	0	0	3.7	0	0	6.3	0	1.1 +	26	
27	0	0	0.2	0.9	0	0	0	0	0	0	0.4	0	27	
28	0.5	0	0	0	5.3	0	0	0	0	0	0	0	28	
29	0.8	5.4	0.1	0	6.8	0.1	0	0	0	0	0	0	29	
30	9.8	0	0.2	20.5	0	0.2	0	0	0	0	0.3	0.1	30	
31	18.2	0	0	0	1.2	0	0.8	0	0	0	0	0	31	
Monatssumme	142.0	85.7	38.2	148.7 +	136.6	144.1	24.9	28.5	52.2	47.9	69.2	2.8 -	mm	
Niederschlagstage	16	13	9	11	15	19 +	5	6	6	8	9	1 -	Tage	
Niederschlagstage grösser oder gleich als [mm]	180 >= 0.1		64 >= 5			29 >= 10		9 >= 20		>= 50		>= 100		Tage
Jahreswerte	Gesamtniederschlag 920.8 mm					Niederschlagstage 118 Tage								



Periode	2002 - 2016 (15 Jahre)												
Mit Monatssumme	58.1	48.2 -	50.3	72.3	95.7	82.9	87.8	98.0 +	71.3	77.9	67.5	70.1	mm
Max Tagessumme	22.6	21.1 -	59.1	44.1	37.0	49.1	38.6	77.0 +	62.1	54.8	36.1	32.7	mm
Jahr	2016	2004	2006	2006	2016	2013	2013	2007	2008	2004	2012	2013	
Periode	Max Gesamtniederschlag 1115.4 (2002)					Min Gesamtniederschlag 580.6 (2003)							mm

Darstellung der letzten 12 Jahre



Jahressumme	864.6	1004.3	901.9	947.2	797.7	904.2	681.4	1101.8	1068.9	855.8	605.9	920.8	mm
--------------------	--------------	---------------	--------------	--------------	--------------	--------------	--------------	---------------	---------------	--------------	--------------	--------------	-----------

Niederschlag

Ried - Metzerlen

SO 601/256/016

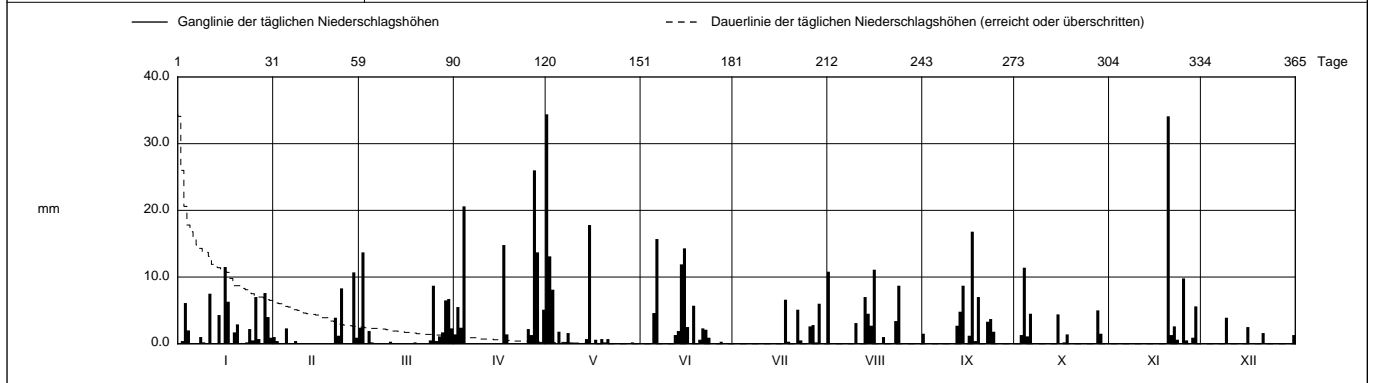
Koordinaten 601 007 / 256 825

Stations Höhe 490.0 mÜM

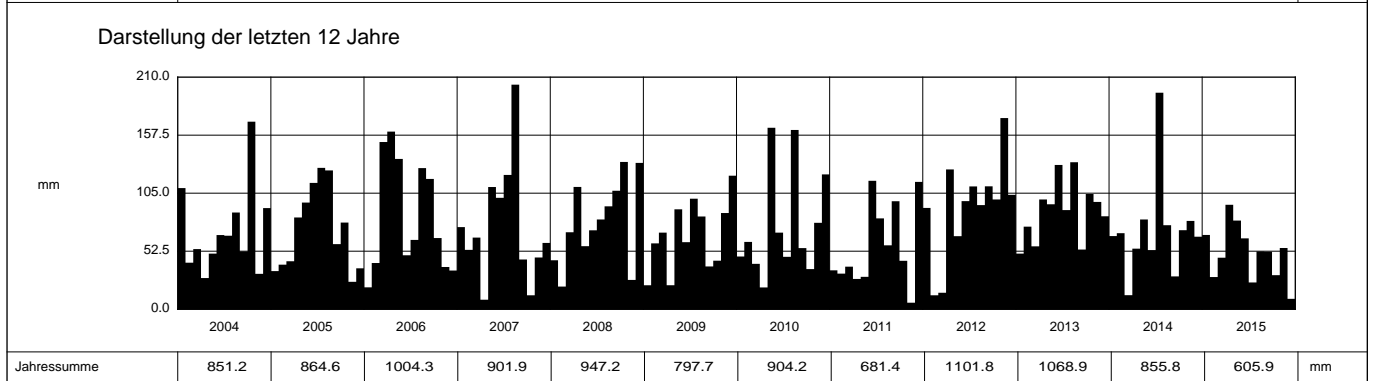
Fläche - km2

2015	Jan	Feb	März	April	Mai	Juni	Juli	Aug	Sept	Okt	Nov	Dez	
1	0	1.0	2.4	1.4	34.4 +	0	0	10.8	1.5	0	0	0	1
2	0.4	0.4	13.7 +	5.5	13.1	0	0	0	0	0	0	0	2
3	6.1	0	0	2.4	8.1	0	0	0	1.3	0	0	0	3
4	2.0	0	1.9	20.6	0.1	0	0	0	11.4 +	0	0	0	4
5	0	2.3	0.2	0.1	1.8	4.6	0	0	0	1.1	0	0	5
Tägliche Niederschlags-höhen													
6	0	0	0	0	0	15.7 +	0	0	0	4.5	0	0	6
7	0.1	0	0	0	0	0	0	0	0	0	0	0	7
8	1.0	0.4	0	0	1.6	0	0	0	0	0	0	0	8
9	0.2	0	0	0	0.2	0	0	0	0	0	0	3.9 +	9
10	0	0	0	0	0	0	0	3.1	0	0	0	0	10
11	7.5	0	0.3	0	0	0	0	0	0	0	0	0	11
12	0	0	0	0	0	1.3	0	0	2.7	0	0	0	12
13	0	0	0	0	0	1.9	0	7.0	4.8	0	0	0	13
14	4.3	0	0	0	0.7	11.9	0	4.5	8.7	0	0	0	14
15	0	0	0	0	17.8	14.3	0	2.7	0.1	4.4	0	0.1	15
mm													
16	11.5 +	0	0	0	0	2.5	0	11.1 +	1.2	0	0	2.5	16
17	6.3	0	0	14.8	0.6	0	0	0	16.8 +	0.2	0	0	17
18	0	0	0	1.4	0	5.7	6.6 +	0	0.4	1.4	0	0	18
19	1.7	0	0.2	0	0.7	0	0.3	1.0	7.0	0	0	0	19
20	2.9	0	0	0	0.2	0.6	0	0	0.1	0	34.1 +	0	20
21	0	3.9	0	0	0.7	2.3	0	0	0	0	1.3	1.6	21
22	0	1.2	0	0	0	2.1	5.1	0	3.3	0	2.6	0	22
23	0.2	8.3	0	0	0	0.9	0.5	3.4	3.7	0	0.6	0	23
+ Maximum													
24	2.2	0	0.5	0	0	0	0.1	8.7	1.8	0	0	0	24
25	0.5	0	8.7	2.2	0	0	0	0	0	0	9.8	0	25
26	7.0	0	0.4	1.3	0	0	2.6	0	0	0	0.5	0	26
27	0.7	10.7 +	1.1	26.0 +	0	0.3	2.8	0	0	0	0	0	27
28	0.1	0.9	1.7	13.7	0	0	0.2	0	5.0	0.9	0	0	28
29	7.6	0	6.5	0	0.2	0	6.0	0	1.5	5.6	0	0	29
30	4.0	0	6.7	5.1	0	0	0	0	0	0	0	0	30
31	0.9	0	2.3	0	0	0	0	0	0	0	1.3	0	31

Monatssumme	67.2	29.1	46.6	94.5 +	80.2	64.1	24.2	52.3	52.1	30.8	55.4	9.4 -	mm	
Niederschlagstage	13 +	6	9	11	6	10	5	9	10	8	5	4 -	Tage	
Niederschlagstage grösser oder gleich als [mm]	136 >= 0.1		41 >= 5			18 >= 10		4 >= 20		>= 50		>= 100		Tage
Jahreswerte	Gesamtniederschlag 605.9 mm				Niederschlagstage 96 Tage									



Periode	2002 - 2015 (14 Jahre)												
Mit Monatssumme	52.1	45.5 -	51.2	66.8	92.7	78.5	92.3	103.0 +	72.7	80.1	67.4	74.9	mm
Max Tagessumme Jahr	19.1 - 2014	21.1 - 2004	59.1 - 2006	44.1 - 2006	36.7 - 2006	49.1 - 2013	38.6 - 2013	77.0 + 2007	62.1 - 2008	54.8 - 2004	36.1 - 2012	32.7 - 2013	mm
Periode	Max Gesamtniederschlag 1115.4 (2002)					Min Gesamtniederschlag 580.6 (2003)							mm



Jahressumme	851.2	864.6	1004.3	901.9	947.2	797.7	904.2	681.4	1101.8	1068.9	855.8	605.9	mm
-------------	-------	-------	--------	-------	-------	-------	-------	-------	--------	--------	-------	-------	----

Niederschlag

Ried - Metzleren

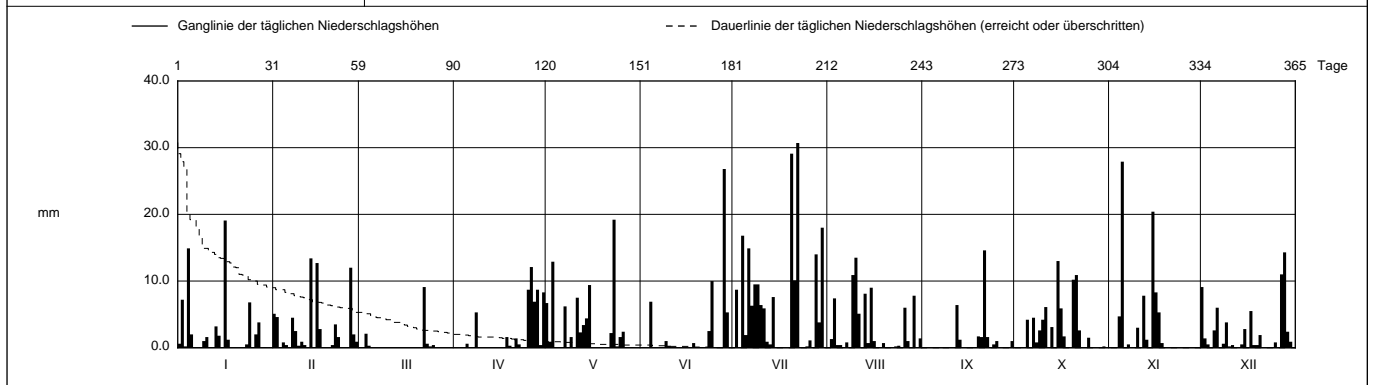
SO 601/256/016

Koordinaten 601 007 / 256 825

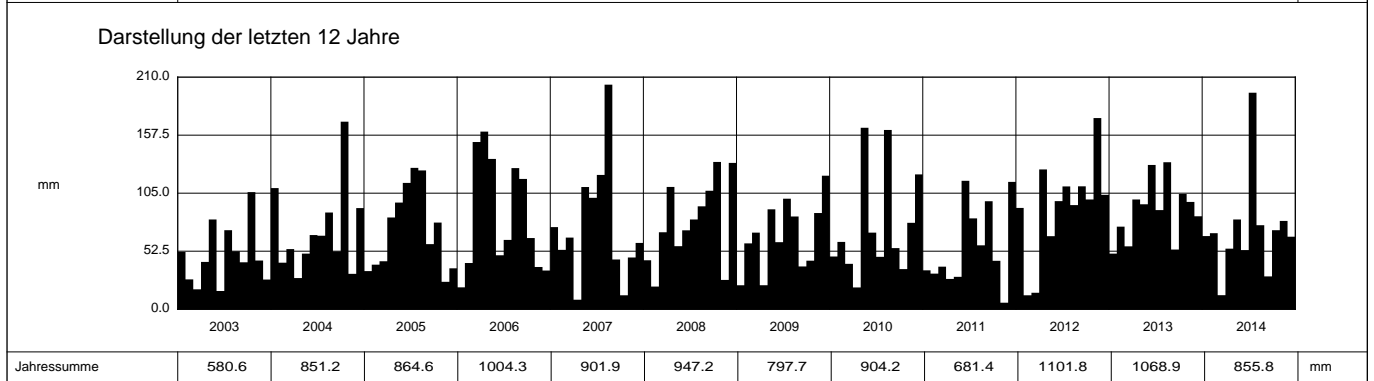
Stations Höhe 490.0 müM

Fläche - km2

2014		Jan	Feb	März	April	Mai	Juni	Juli	Aug	Sept	Okt	Nov	Dez		
1		0.6	5.1	0	0	6.7	0	0	0	0	0	0	9.1	1	
2		7.2	4.6	0	0	0.9	0	8.7	1.3	0	0	0	1.4	2	
3		0.2	0	2.1	0	12.9	0	0	7.4	0	0	0	0.5	3	
4		14.9	0.8	0.3	0	0	6.9	16.8	0.4	0	0	4.7	0	4	
5		2.0	0.4	0	0.6	0	0	1.9	0.4	0	4.2	27.9 +	2.6	5	
6	Tägliche Niederschlags-höhen	0	0	0	0	0.1	0	14.9	0	0	0	0	6.0	6	
7		0	4.5	0	0	6.2	0	6.3	0.8	0	4.5	0.5	0	7	
8		0.1	2.5	0	5.3	0.1	0	9.5	0	0	0.8	0	0.6	8	
9		1.0	0.3	0	0	1.6	1.0	9.5	10.9	0	2.6	0	3.8	9	
10		1.6	0.9	0	0	0	0.3	6.4	13.5 +	0	4.2	3.0	0.2	10	
11		0	0.4	0	0	7.5	0	5.9	5.1	0	6.1	0	0.4	11	
12		0	0	0	0	2.3	0	0.9	0	6.4	0	7.8	0	12	
13		3.2	13.4 +	0	0	3.4	0	0.5	8.1	1.2	3.1	1.2	0	13	
14		1.8	0	0	0	4.4	0	7.6	0.7	0	0	0.1	0.5	14	
15		0.1	12.7	0	0	9.4	0	0	9.0	0	13.0 +	20.4	2.8	15	
16	mm	19.1 +	2.8	0	0	0	0	0	1.0	0	5.9	8.3	0	16	
17		1.2	0	0	0	0	0	0	0	1.7	5.3	5.5	17		
18		0	0	0	1.6	0	0.7	0	0	0.1	0	0.7	0.4	18	
19		0	0	0	0.3	0	0	0	0.7	1.7	0	0	0.4	19	
20		0	0.4	0	0	0	0	29.1	0	1.6	10.2	0	1.9	20	
21	0	3.5	0	1.4	0	0	10.1	0	14.6 +	10.9	0	0	21		
22	0	1.6	9.1 +	0.5	2.2	0	30.7 +	0	1.6	2.6	0	0	22		
23	0.5	0	0.6	0	19.2 +	2.5	0	0.2	0	0	0	0	23		
24	6.8	0	0.2	0	0.2	10.0	0	0.3	0.5	0	0	0	24		
25	0	0	0.4	8.7	1.6	0	0.2	0	1.0	1.5	0	0.8	25		
26	2.0	12.0	0	12.1 +	2.4	0	1.1	6.0	0	0	0	0	26		
27	3.8	2.0	0	6.9	0	0	0	1.0	0	0	0	11.0	27		
28	0	0.9	0	8.7	0	26.8 +	14.0	0	0	0	0	14.3 +	28		
29	0.1	0	0	0.4	0.1	5.3	3.8	7.8	0	0	0	2.4	29		
30	0	0	0	8.3	0	0	18.0	0	1.0	0.2	0	0.9	30		
31	0	0	0	0	0	0	0	1.4	0	0	0	0.1	31		
Monatssumme		66.2	68.8	12.7 -	54.8	81.2	53.5	195.9 +	76.0	29.7	71.5	79.9	65.6	mm	
Niederschlagstage		12	11	2 -	8	13	6	17 +	12	8	13	8	11	Tage	
Niederschlagstage grösser oder gleich als [mm]		176 >= 0.1		64 >= 5			27 >= 10		5 >= 20		>= 50		>= 100		Tage
Jahreswerte		Gesamtniederschlag 855.8 mm					Niederschlagstage 121 Tage								



Periode	2002 - 2014												(13 Jahre)
Mit Monatssumme	50.9	46.8 -	51.6	64.7	93.7	79.6	97.5	106.9 +	74.3	83.9	68.3	80.0	mm
Max Tagessumme Jahr	19.1 - 2014	21.1 - 2004	59.1 - 2006	44.1 - 2006	36.7 - 2006	49.1 - 2013	38.6 - 2013	77.0 + 2007	62.1 - 2008	54.8 - 2004	36.1 - 2012	32.7 - 2013	mm
Periode	Max Gesamtniederschlag 1115.4 (2002)						Min Gesamtniederschlag 580.6 (2003)						mm



Jahressumme	580.6	851.2	864.6	1004.3	901.9	947.2	797.7	904.2	681.4	1101.8	1068.9	855.8	mm
-------------	-------	-------	-------	--------	-------	-------	-------	-------	-------	--------	--------	-------	----

Niederschlag

Ried - Metzleren

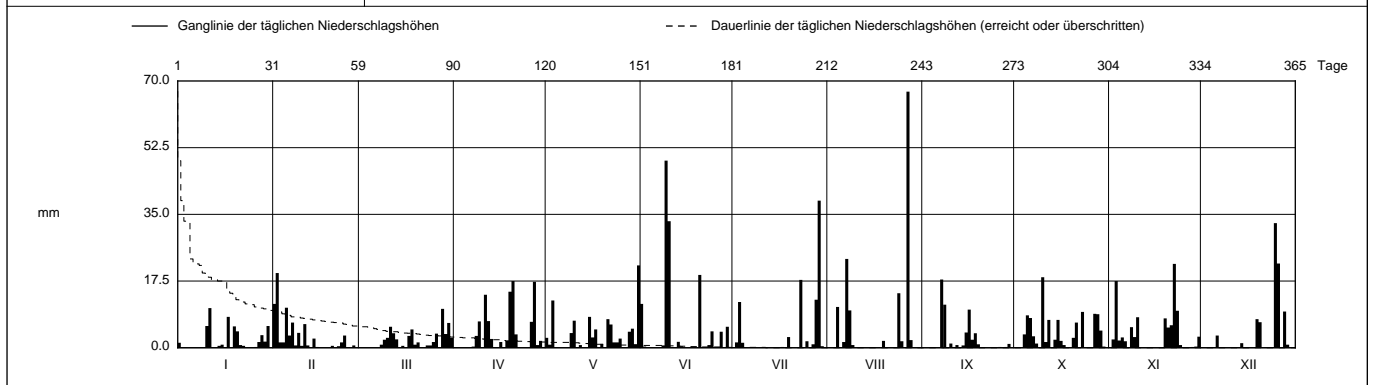
SO 601/256/016

Koordinaten 601 007 / 256 825

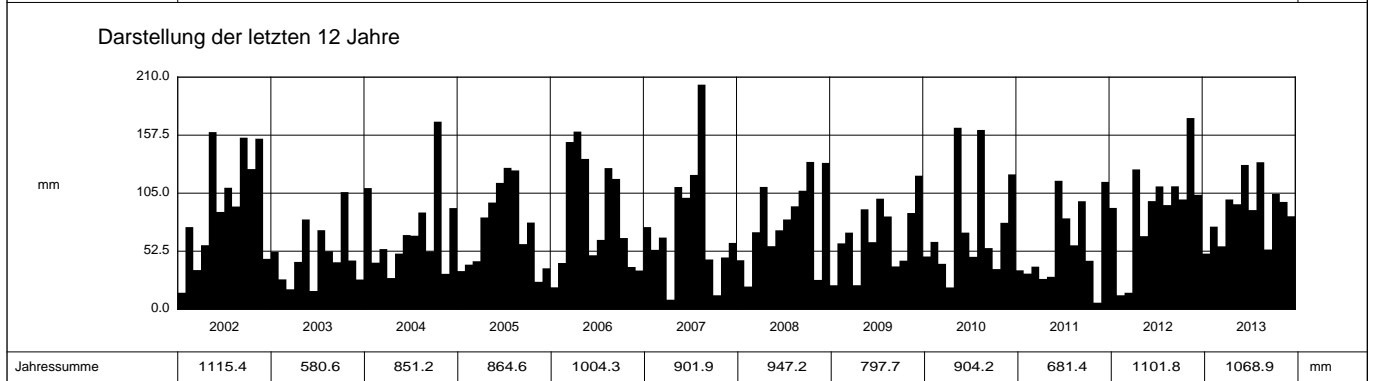
Stations Höhe 490.0 müM

Fläche - km2

2013		Jan	Feb	März	April	Mai	Juni	Juli	Aug	Sept	Okt	Nov	Dez		
1		1.3	11.5	0	0	2.6	11.5	0	0	0	0	0	0.1	1	
2		0	19.6 +	0	0	0.8	0.3	1.4	0	0	0	2.2	0	2	
3		0.1	1.4	0	0	12.4	0	12.0	0	0	0	17.5	0	3	
4		0	1.4	0	0	0.1	0	1.3	10.7	0	3.5	1.9	0	4	
5		0	10.5	0	0	0	0	0	0	0	8.5	2.7	0.1	5	
6	Tägliche Niederschlags-höhen	0	3.2	0	0	0	0	0	1.5	0	7.8	1.7	3.2	6	
7		0	6.6	0	0.3	0	0	0	23.3	17.9 +	3.0	0	0	7	
8		0	0.6	0.8	3.1	0.1	0.6	0	9.8	11.3	1.1	5.4	0	8	
9		0	3.9	2.1	6.9	3.9	49.1 +	0	0.7	0	0	2.8	0	9	
10		5.7	0.5	2.6	0	7.1	33.2	0	0	0	1.1	18.5 +	8.0	0	10
11		10.4 +	6.2	5.5	13.9	0.1	0	0	0	0.2	1.5	0	0	0	11
12		0	0.6	3.8	7.0	0.7	0	0	0	0.7	7.3	0.1	0	0	12
13		0	0	2.2	2.3	0	1.6	0	0	0	0	0	0	0.1	13
14		0.5	2.4	0	0	0	0.4	0	0	0.6	2.1	0	1.2	0	14
15		0.8	0.2	0.5	0	8.1	0	0	0	4.0	7.3	0	0	0	15
16	mm	0	0	0	1.5	2.7	0	0	0	10.0	1.8	0	0	16	
17		8.1	0	3.1	0	4.8	0	0.2	0	2.1	0.7	0	0	17	
18		0	0	4.8	1.8	0	0	0	0	3.8	0	0	0	18	
19		5.6	0	0.8	14.7	1.0	0	2.8	1.8	0.9	0	7.7	7.5	19	
20		4.3	0.5	1.4	17.5 +	0	19.1	0	0	0	2.6	5.3	6.7	20	
21	0.7	0	0	3.5	7.5	0	0	0	0	6.6	5.9	0	21		
22	0.5	0.4	0	0	6.1	0	0	0	0	0	22.0 +	0.1	22		
23	0	1.4	0.6	0	1.4	0.7	17.8	0	0	9.4	9.7	0	23		
24	0	3.2	0.6	0	1.4	4.3	0	14.3	0	0	0.7	0	24		
25	0	0	1.5	0	2.4	0	1.7	0	1.7	0	0	0	32.7 +	25	
26	0.2	0	3.7	6.8	0.1	0.1	0	0	0.2	0.1	0.1	22.1	0	26	
27	1.5	0.6	0	17.3	0	4.2	0.9	67.2 +	0	8.9	0	0	0	27	
28	3.3	0	10.2 +	0.7	4.2	0	12.6	2.0	0.2	8.8	0.2	9.5	0	28	
29	1.6	0	3.6	1.8	5.0	5.5	38.6 +	0	1.0	4.5	0.3	0.8	0	29	
30	5.7	0	6.5	0.2	0.9	0	0.4	0	0	0.3	2.9	0	0	30	
31	0	0	2.6	0	21.6 +	0	0	0	0	0	0	0	0	31	
Monatssumme		50.3 -	74.7	56.9	99.3	95.0	130.6	89.7	133.0 +	54.0	104.3	97.1	84.1	mm	
Niederschlagstage		10	12	14	13	16	8	8	9	8	17 +	14	7 -	Tage	
Niederschlagstage grösser oder gleich als [mm]		192 >= 0.1		66 >= 5			31 >= 10		9 >= 20		1 >= 50		>= 100		Tage
Jahreswerte		Gesamtniederschlag 1068.9 mm					Niederschlagstage 136 Tage								



Periode	2002 - 2013 (12 Jahre)												
Mit Monatssumme	49.7	45.0 -	54.8	65.5	94.7	81.8	89.3	109.5 +	78.0	84.9	67.3	81.2	mm
Max Tagessumme Jahr	17.8 - 2007	21.1 2004	59.1 2006	44.1 2006	36.7 2006	49.1 2013	38.6 2013	77.0 + 2007	62.1 2008	54.8 2004	36.1 2012	32.7 2013	mm
Periode	Max Gesamtniederschlag 1115.4 (2002)						Min Gesamtniederschlag 580.6 (2003)						mm



Jahressumme	1115.4	580.6	851.2	864.6	1004.3	901.9	947.2	797.7	904.2	681.4	1101.8	1068.9	mm
-------------	--------	-------	-------	-------	--------	-------	-------	-------	-------	-------	--------	--------	----

Niederschlag

Ried - Metzleren

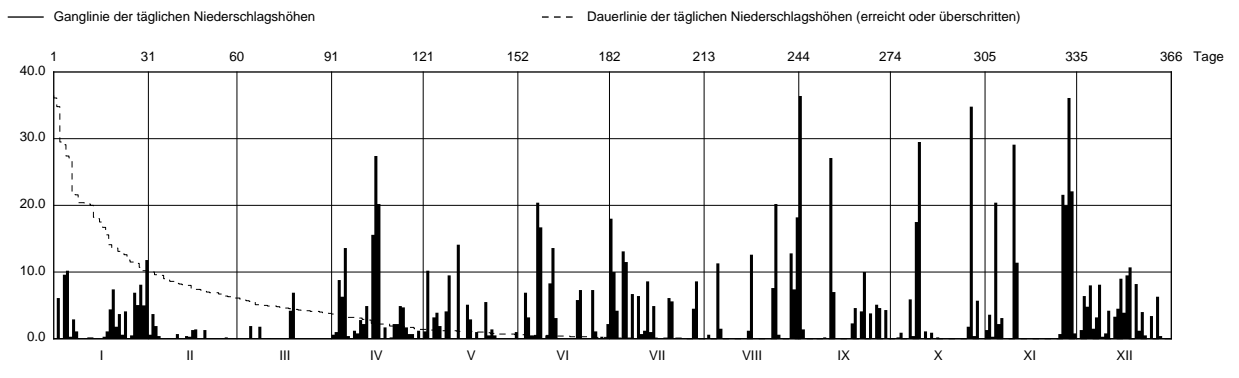
SO 601/256/016

Koordinaten 601 007 / 256 825

Stations Höhe 490.0 mÜM

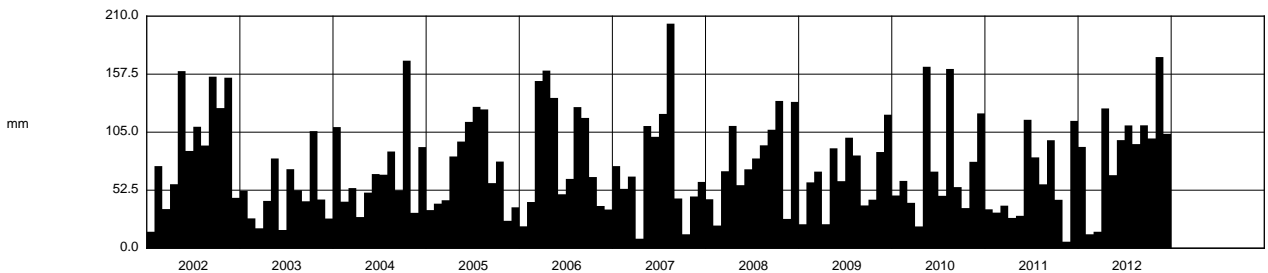
Fläche - km2

2012	Jan	Feb	März	April	Mai	Juni	Juli	Aug	Sept	Okt	Nov	Dez		
1	0.1	0.6	0	0.6	1.1	0	18.0 +	0	36.4 +	0	1.3	0	1	
2	6.1	3.7 +	0	1.0	10.2	0	10.0	0.6	1.4	0	3.6	1.3	2	
3	0	1.9	0	8.8	0.1	6.9	4.2	0	0	0.2	0.3	6.4	3	
4	9.6	0.4	0	6.3	3.2	3.2	0	0	0	0.9	20.4	4.8	4	
5	10.2	0	1.9	13.6	3.9	0.5	13.1	11.3	0	0	2.2	8.0	5	
Tägliche Niederschlags-höhen														
6	0.3	0	0	0.4	1.9	0.5	11.5	1.5	0	0	3.1	1.5	6	
7	2.9	0.1	0	0.1	0	20.4 +	0	0.1	0	5.9	0	3.2	7	
8	1.1	0.1	1.8	1.2	4.1	16.7	6.7	0	0	0.4	0	8.1	8	
9	0	0.1	0	0.8	9.5	0	0	0	0.2	17.5	0.1	0.3	9	
10	0	0.7	0	2.8	0	0.5	6.4	0	0	29.5	29.1	0.8	10	
11	0.1	0	0.1	2.2	0	8.3	0.7	0	27.1	0	11.4	4.2	11	
12	0.2	0	0	4.9	14.1 +	13.6	1.2	0	7.0	1.1	0	0	12	
13	0.2	0.4	0	0.1	0	3.1	8.6	0	0	0	0.1	3.3	13	
14	0	0.3	0	15.6	0	0	1.0	0	0	0.9	0	4.5	14	
15	0	1.3	0	27.4 +	5.1	0	4.9	1.2	0.1	0	0	9.0	15	
mm														
16	0	1.4	0	20.2	2.9	0	0	12.6	0.1	0.2	0	3.9	16	
17	0.3	0	0	0	0	0	0	0	0	0	0	9.5	17	
18	1.1	0	4.2	1.7	1.0	0	0	0	2.3	0	0	10.7 +	18	
19	4.4	1.3	6.9 +	0.1	0.1	0.1	0	0	4.6	0	0	0	19	
20	7.4	0	0	0.2	0	5.8	6.1	0	0	0	0	8.2	20	
21	1.8	0	0	2.2	5.5	7.3	5.6	0	4.1	0	0	1.2	21	
22	3.7	0	0	2.2	0.5	0	0	0	10.0	0	0.1	4.0	22	
23	0.6	0	0	4.9	1.4	0	0	7.6	0	0	0	0.5	23	
+ Maximum														
24	4.1	0	0	4.7	0.5	0	0	20.2 +	3.8	0	0	0	24	
25	0.1	0.1	0	1.7	0	7.3	0	0.6	0.1	0	0.7	3.4	25	
26	0.5	0.2	0	0.7	0	1.1	0	0.1	5.1	1.8	21.6	0	26	
27	6.9	0	0	0.7	0	0	0	0	4.6	34.8 +	20.0	6.3	27	
28	5.1	0	0	0.1	0	0.3	4.5	0	0	0.4	36.1 +	0.4	28	
29	8.1	0	0	1.2	0	0	8.6	12.8	4.3	5.7	22.1	0	29	
30	5.0	0	0	0.1	0	2.2	0	7.4	0	0	0.8	0	30	
31	11.8 +		0		1.0		0	18.2		0		0	31	
Monatssumme	91.6	12.6 -	14.9	126.5	66.1	97.8	111.1	94.2	111.2	99.3	173.0 +	103.5	mm	
Niederschlagstage	16	5	4 -	18	14	12	15	9	12	7	11	19 +	Tag	
Niederschlagstage grösser oder gleich als [mm]	207 >= 0.1		71 >= 5			34 >= 10		14 >= 20		>= 50		>= 100		Tag
Jahreswerte	Gesamtniederschlag 1101.8 mm			Niederschlagstage 142 Tage										



Periode	2002 - 2012											(11 Jahre)	
Mit Monatssumme	49.6	42.3 -	54.6	62.5	94.7	77.3	89.3	107.3 +	80.2	83.1	64.6	80.9	mm
Max Tagessumme Jahr	17.8 - 2007	21.1 2004	59.1 2006	44.1 2006	36.7 2006	28.3 2005	38.5 2002	77.0 + 2007	62.1 2008	54.8 2004	36.1 2012	30.0 2010	mm
Periode	Max Gesamtniederschlag 1115.4 (2002)					Min Gesamtniederschlag 580.6 (2003)						mm	

Darstellung der letzten 11 Jahre



Jahressumme	1115.4	580.6	851.2	864.6	1004.3	901.9	947.2	797.7	904.2	681.4	1101.8	mm
--------------------	---------------	--------------	--------------	--------------	---------------	--------------	--------------	--------------	--------------	--------------	---------------	-----------

Niederschlag

Ried - Metzerlen

SO 601/256/016

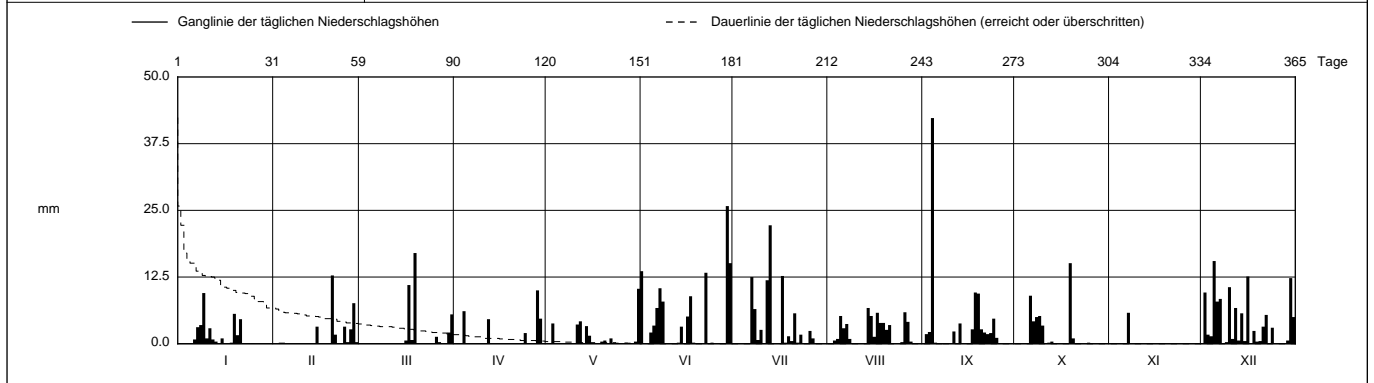
Koordinaten 601 007 / 256 825

Stations Höhe 490.0 müM

Fläche - km2

2011		Jan	Feb	März	April	Mai	Juni	Juli	Aug	Sept	Okt	Nov	Dez				
1		0.1	0	0	0	0	13.6	0	0	0	0	0	0	1			
2		0	0	0	0	0	0	0	0	1.8	0	0	9.6	2			
3		0	0.2	0	0	3.8	0	0	0.6	2.2	0	0	1.7	3			
4		0	0.2	0	6.1	0	2.1	0	0.9	42.3 +	0.1	0.1	1.4	4			
5		0	0	0	0	0	3.4	0	5.2	0.2	0	0	15.5 +	5			
Tägliche Niederschlags-höhen																	
6		0.8	0	0	0	0	6.7	0	2.9	0	9.0	0	7.9	6			
7		3.1	0	0	0	0	10.4	12.5	3.7	0	4.2	5.8 +	8.4	7			
8		3.5	0	0	0	0	7.9	6.5	0.9	0	5.0	0	0	8			
9		9.5 +	0	0	0	0	0	0.7	0	0	5.2	0	0.3	9			
10		1.0	0	0	0	0	0	2.6	0	0	3.4	0	10.6	10			
11		2.9	0	0	0	3.6	0.1	0	0	2.3	0	0	0.9	11			
12		0.8	0	0	4.6	4.2	0	11.9	0	0	0.2	0	6.7	12			
13		0.4	0	0	0	0	0.2	22.2 +	0	3.8	0.4	0	0.6	13			
14		0	0	0	0	3.3	3.2	0	6.7 +	0	0	0	5.7	14			
15		1.0	3.2	0	0	1.5	0	0	5.2	0	0	0	0.5	15			
mm																	
16		0	0	0.6	0	0	5.1	0	1.3	0.1	0	0	12.6	16			
17		0	0	11.0	0	0	8.9	12.7	5.8	2.7	0	0	0	17			
18		0.2	0	0.7	0	0	0.2	0.2	3.9	9.6	0	0	2.4	18			
19		5.6	0	17.0 +	0	0.4	0	1.4	3.9	9.4	15.1 +	0	0.4	19			
20		1.6	12.8 +	0	0	0.6	0	0.5	2.6	2.7	1.0	0	0.5	20			
21		4.6	1.7	0	0	0	0	5.7	3.5	2.1	0	0	3.2	21			
22		0	0	0	0	1.0	13.3	0.2	0	1.8	0	0	5.4	22			
23		0	0	0	0	0	0	1.7	0	2.0	0	0	0	23			
+ Maximum																	
24		0	3.2	0	2.0	0	0.2	0	0	4.7	0	0	3.0	24			
25		0.1	0.3	0	0	0	0	0	0.3	1.1	0.2	0	0	25			
26		0	2.7	1.3	0	0	0	2.4	5.9	0.1	0	0	0	26			
27		0	7.6	0.3	0	0.2	0	1.0	4.1	0	0	0	0	27			
28		0	0.3	0	10.0 +	0	0	0	0.4	0	0	0	0	28			
29		0	0	0	4.7	0	25.8 +	0	0	0	0	0	0.6	29			
30		0	0	2.1	0	0.4	15.1	0	0	0	0	0	12.3	30			
31		0	0	5.5	0	10.3 +	0	0	0	0	0	0	5.0	31			
Monatssumme		35.2	32.2	38.5	27.4	29.3	116.2 +	82.2	57.8	88.9	43.8	5.9 -	115.2	mm			
Niederschlagstage		9	6	5	5	7	12	11	13	14	7	1 -	16 +	Tage			
Niederschlagstage grösser oder gleich als [mm]				151 >= 0.1			49 >= 5		20 >= 10		3 >= 20		>= 50		>= 100		Tage
Jahreswerte				Gesamtniederschlag 672.6 mm				Niederschlagstage 106 Tage									

Ganglinie der täglichen Niederschlagshöhen		----- Dauerlinie der täglichen Niederschlagshöhen (erreicht oder überschritten)																							
1		31		59		90		120		151		181		212		243		273		304		334		365 Tage	



Periode	2002 - 2011												(10 Jahre)
Mit Monatssumme	45.4	45.2 -	58.6	56.1	97.6	75.3	87.1	108.6 +	76.2	81.5	53.8	78.6	mm
Max Tagessumme Jahr	17.8 - 2007	21.1 2004	59.1 2006	44.1 2006	36.7 2006	28.3 2005	38.5 2002	77.0 + 2007	62.1 2008	54.8 2004	23.4 2009	30.0 2010	mm
Periode	Max Gesamtniederschlag 1115.4 (2002)						Min Gesamtniederschlag 580.6 (2003)						mm

