

# Niederschlag

# Gheid - Olten

SO 633/243/012

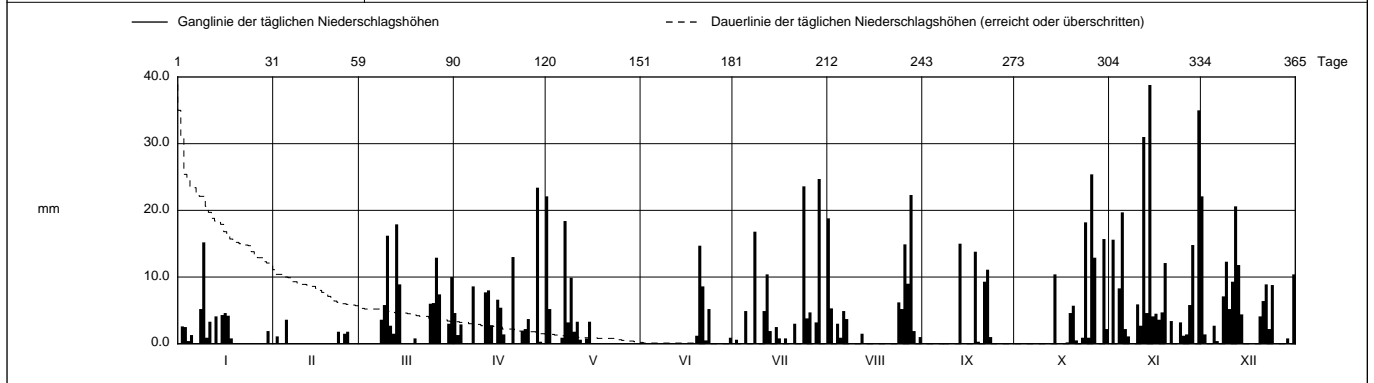
Koordinaten 2 633 985 / 1 243 535

Stations Höhe 418.0 müM

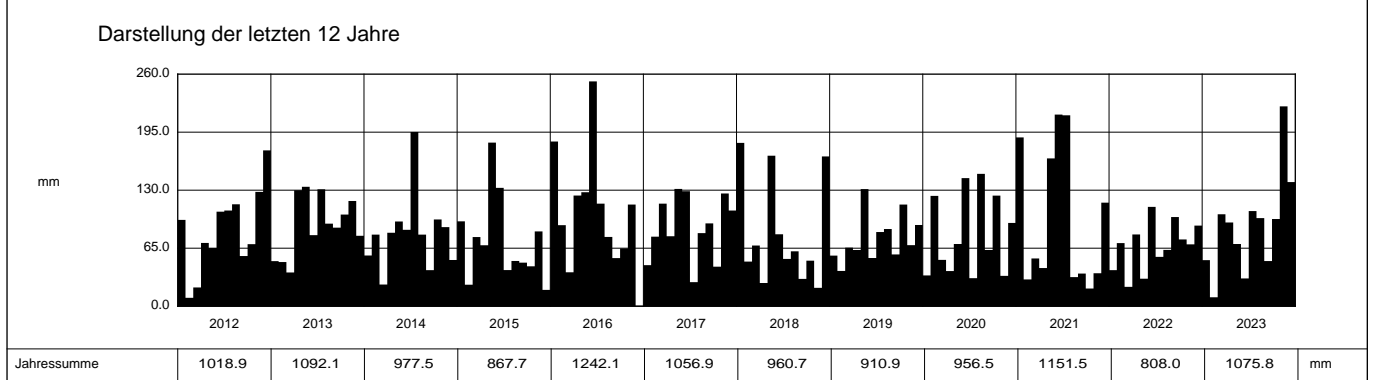
Fläche - km2

2023		Jan	Feb	Mar	Apr	Mai	Jun	Jul	Aug	Sep	Okt	Nov	Dez	
1	0	0.1	0	4.6	22.1 +	0	0	18.8	0	0	0	22.1 +	1	
2	2.6	1.1	0	1.3	5.2	0	0.6	5.3	0	0	15.6	1.4	2	
3	2.5	0	0	2.9	0	0	0	0	0	0	0.1	0	3	
4	0.4	0	0	0	0	0	0	3.0	0	0	8.3	0	4	
5	1.3	3.6 +	0	0	0	0	4.9	0.9	0	0	19.7	2.7	5	
<b>Tägliche Niederschlags-höhen</b>	6	0.1	0	0	0	0.9	0	4.9	0	0	2.2	0.4	6	
	7	0	0	0	8.6	18.4	0	3.7	0	0	1.1	0	7	
	8	5.2	0	3.6	0	3.2	0	16.8	0	0	0	7.1	8	
	9	15.2 +	0	5.8	0	9.9	0	0	0	0	0	12.3	9	
	10	0.9	0	16.2	0	1.8	0	0	0	0	5.9	5.2	10	
	11	3.3	0	2.7	7.7	3.3	0	4.9	0	0	2.7	9.3	11	
	12	0	0	1.5	8.0	0.6	0	10.4	1.5	0	31.0	20.6	12	
	13	4.1	0	17.9 +	2.7	0	0	1.9	0	15.0 +	0.1	4.6	13	
	14	0.1	0	8.9	0	0.8	0	0	0	0.1	10.4	38.8 +	14	
	15	4.3	0	0.1	6.6	3.3	0	2.5	0	0	4.1	4.1	15	
mm	16	4.6	0	0	5.4	0.1	0	0.8	0	0	4.5	0	16	
	17	4.2	0	0	1.4	0	0	0	0	0	3.6	0	17	
	18	0.8	0	0	0	0	0	0.8	0	13.8	0.2	4.7	18	
	19	0	0	0.8	0	0	1.2	0	0	0.3	4.6	12.1	19	
	20	0	0	0	13.0	0	14.7 +	0	0	0	5.7	0	20	
	21	0	0	0	0	0	8.6	3.0	0	9.3	0.5	3.4	21	
	22	0	1.8	0	0	0	0.5	0	0	11.1	0	0.1	22	
	23	0	0.1	0	1.9	0	5.2	0	0	1.0	0.9	0	23	
<b>+ Maximum</b>	24	0	1.5	6.0	2.2	0	0	23.6	6.2	0	18.2	3.2	8.8	24
	25	0.1	1.8	6.1	3.7	0.1	0	3.8	5.2	0	0.9	1.2	0	25
	26	0	0	12.9	0	0	0	4.7	14.9	0	25.4 +	1.4	0	26
	27	0	0	7.4	0.1	0	0	0	9.0	0	12.9	5.8	0	27
	28	0	0	0	23.4 +	0	0	3.2	22.3 +	0	0	14.8	0.1	28
	29	0	0	0.1	0.3	0	0	24.7 +	1.9	0	0	0	0.8	29
	30	1.9	0	3.0	0	0	0.9	0	0.1	0	15.7	35.0	0	30
	31	0	0	10.0	0	0	0	0	1.0	0	2.2	10.4	31	
<b>Monatssumme</b>		51.6	10.0 -	103.0	93.8	69.7	31.1	106.6	98.7	50.6	97.7	223.9 +	139.1	mm
<b>Niederschlagstage</b>		11	5	13	15	8	4 -	12	13	5	8	22 +	16	Tage
<b>Niederschlagstage grösser oder gleich als [mm]</b>				170 >= 0.1	67 >= 5	37 >= 10	11 >= 20			>= 50		>= 100		Tage
<b>Jahreswerte</b>				Gesamtniederschlag 1075.8 mm			Niederschlagstage 132 Tage							

Ganglinie der täglichen Niederschlagshöhen		Dauerlinie der täglichen Niederschlagshöhen (erreicht oder überschritten)													
mm		1	31	59	90	120	151	181	212	243	273	304	334	365	Tage



Periode	1999 - 2023 (25 Jahre)												
Mit Monatssumme	70.5	53.3 -	65.4	67.9	100.5 +	95.3	99.1	97.7	66.7	73.5	75.5	84.0	mm
Max Tagessumme	53.7	27.3 -	33.6	39.3	102.2 +	40.4	92.9	57.8	62.0	39.4	64.1	34.3	mm
Jahr	2021	2017	2006	2008	1999	2017	2013	2007	2006	2006	2015	2011	
Periode	Max Gesamtniederschlag 1242.1 (2016)						Min Gesamtniederschlag 637.6 (2003)						mm



Die Daten werden seit 2013 freundlicherweise von der AEN AG zur Verfügung gestellt.

# Niederschlag

# Gheid - Olten

SO 633/243/012

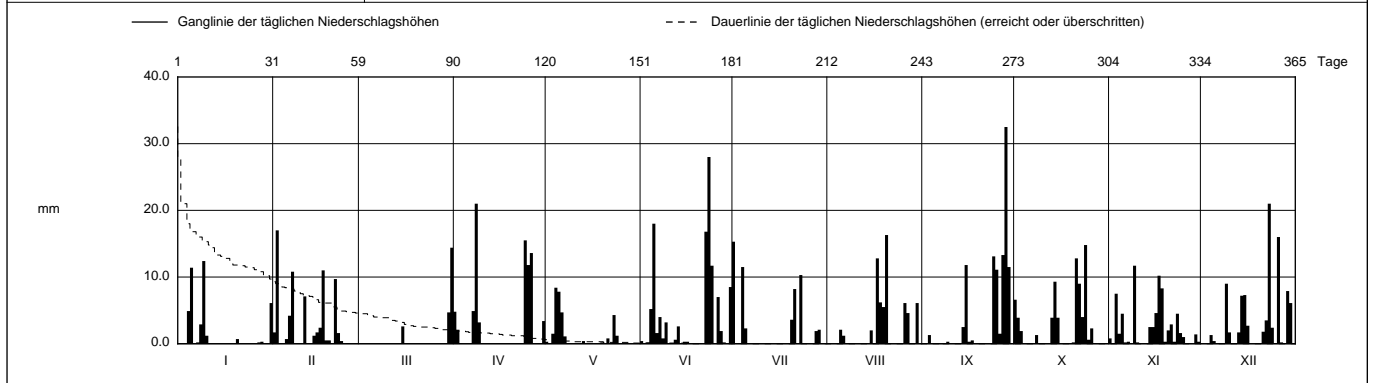
Koordinaten 2 633 985 / 1 243 535

Stations Höhe 418.0 mÜM

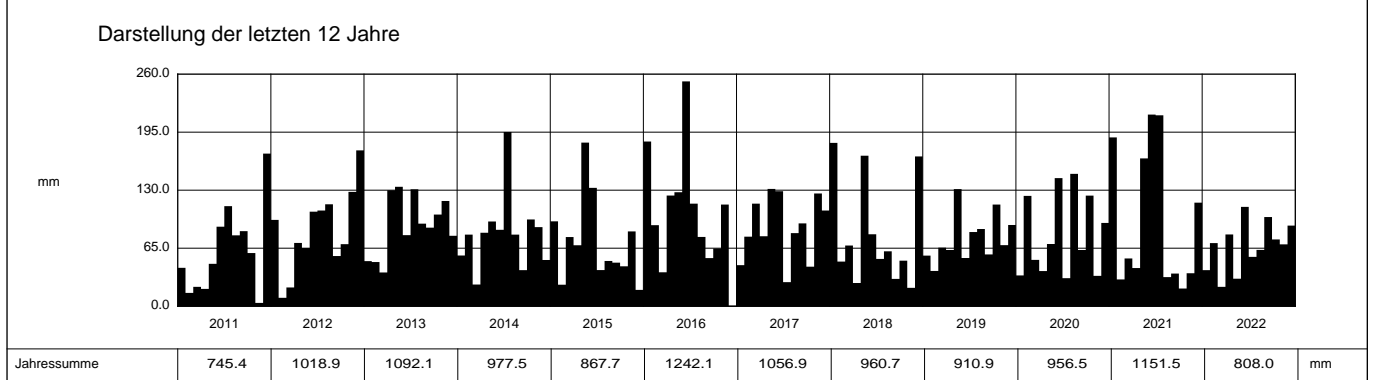
Fläche - km2

2022		Jan	Feb	Mar	Apr	Mai	Jun	Jul	Aug	Sep	Okt	Nov	Dez	
1		0.1	1.7	0	4.8	0.3	0.4	15.3 +	0	0	6.6	0.8	0	1
2		0	17.0 +	0	2.1	0	0	0	0	0	3.9	0	0	2
3		0	0	0	0.1	1.5	0.2	0.1	0	1.3	1.9	7.5	0	3
4		4.9	0	0	0	8.4 +	5.2	11.5	0	0	0	1.5	1.3	4
5		11.4	0.7	0	0	7.8	18.0	2.3	2.1	0	0	4.5	0.4	5
6	Tägliche Niederschlags-höhen	0	4.2	0	0	4.7	1.6	0	1.2	0	0	0.2	0	6
7		0.2	10.8	0	4.9	1.1	4.0	0	0	0	0	0.3	0	7
8		2.9	0	0	21.0 +	0.1	0.8	0	0	0.1	1.3	0	0	8
9		12.4 +	0	0	3.2	0	3.2	0	0	0.3	0	11.7 +	9.0	9
10		1.2	0	0	0	0	0	0	0	0	0	0.2	1.7	10
11		0	7.1	0	0	0	0	0	0	0	0	0	0	11
12		0	0	0	0	0	0.6	0	0	0	0	0.1	0	12
13		0	0	0	0	0.4	2.6	0	0	0	3.9	0	1.7	13
14		0	1.2	0	0	0	0	0	0	2.5	9.3	2.5	7.2	14
15		0	1.7	2.6	0	0	0.3	0	2.0	11.8	3.9	2.5	7.3	15
16	mm	0	2.4	0	0	0	0.3	0	0	0.3	0	4.6	2.7	16
17		0	11.0	0	0	0	0	0	12.8	0.5	0	10.2	0	17
18		0	0.5	0	0	0	0	0	6.2	0	0	8.3	0	18
19		0	0.5	0	0	0.2	0	0	5.5	0	0	0.3	0	19
20		0.7	0.1	0	0	0	0	3.6	16.3 +	0	0.2	2.0	0	20
21		0	9.7	0	0	0.8	0	8.2	0.1	0	12.8	2.9	1.8	21
22		0	1.6	0	0	0	16.8	0	0	0	9.0	0.3	3.5	22
23		0	0.4	0	0	4.3	28.0 +	10.3	0	0	4.0	4.5	21.0 +	23
24	+ Maximum	0	0	0	15.5	1.2	11.7	0	0	13.1	14.8 +	1.6	2.4	24
25		0	0.1	0	11.8	0	0	0	0	11.1	0.6	1.0	0.1	25
26		0	0	0	13.6	0	7.0	0	6.1	1.5	2.3	0.1	16.0	26
27		0.2	0	0	0	0	1.9	0	4.6	13.3	0.1	0	0.2	27
28		0.3	0	0	0	0	0.2	1.9	0	32.5 +	0	0	0	28
29		0	0	0	0	0	0	2.1	0	11.5	0	1.4	7.9	29
30		0	0	4.7	3.4	0	8.5	0	6.1	0.1	0.1	0.3	6.1	30
31		6.1	0	14.4 +	0	0	0	0	0.1	0.1	0.1	0	0	31

Monatssumme	40.4	70.7	21.7 -	80.4	30.8	111.3 +	55.3	63.1	99.9	74.8	69.3	90.3	mm
Niederschlagstage	6	11	3 -	9	7	12	8	10	9	12	15 +	14	Tage
Niederschlagstage grösser oder gleich als [mm]			165 >= 0.1	54 >= 5	31 >= 10	4 >= 20	>= 50	>= 100					Tage
Jahreswerte	Gesamtniederschlag 808.0 mm				Niederschlagstage 116 Tage								



Periode	1999 - 2022 (24 Jahre)												
Mit Monatssumme	71.3	55.1 -	63.8	66.8	101.8 +	98.0	98.8	97.6	67.3	72.5	69.3	81.7	mm
Max Tagessumme Jahr	53.7 2021	27.3 - 2017	33.6 2006	39.3 2008	102.2 + 1999	40.4 2017	92.9 2013	57.8 2007	62.0 2006	39.4 2006	64.1 2015	34.3 2011	mm
Periode	Max Gesamtniederschlag 1242.1 (2016)						Min Gesamtniederschlag 637.6 (2003)						mm



Jahressumme	745.4	1018.9	1092.1	977.5	867.7	1242.1	1056.9	960.7	910.9	956.5	1151.5	808.0	mm
-------------	-------	--------	--------	-------	-------	--------	--------	-------	-------	-------	--------	-------	----

Die Daten werden seit 2013 freundlicherweise von der AEN AG zur Verfügung gestellt.

# Niederschlag

# Gheid - Olten

633/243/012

Koordinaten 2 633 985 / 1 243 535

Stations Höhe 418.0 müM

Fläche - km2

2021	Jan	Feb	März	April	Mai	Juni	Juli	Aug	Sept	Okt	Nov	Dez		
1	7.3	7.8	0	0	18.2	0	0.5	2.5	0	0	9.2 +	1.7	1	
2	0	3.4	0	0	12.4	3.7	0	0	0	0	3.3	3.3	2	
3	0	9.3 +	0	0	0	0	3.2	5.9	0	0	2.0	0.3	3	
4	0	0.1	2.0	0	0	19.9	2.9	1.2	0	0.6	0.6	20.9 +	4	
5	0	0	0	0.5	5.3	13.6	0	0.2	0	4.4 +	0.1	3.8	5	
<b>Tägliche Niederschlags-höhen</b>														
6	0.9	0	0	0.1	15.6	0	12.0	2.5	0	3.0	0	0	6	
7	0	0.5	1.4	16.6 +	3.3	29.1	14.9	17.7 +	0	1.5	0	1.1	7	
8	0	0.1	0	0	0	4.0	7.7	0	0	0	0.1	14.1	8	
9	0	2.3	0	0	0	0.9	4.0	0	2.8	0	0	1.4	9	
10	0	4.0	0	0.1	0	0	2.8	0	0.7	0	0	4.8	10	
11	0	0	6.8	6.2	12.7	0	0	0.2	0	0	0	4.2	11	
12	4.9	0	0.3	4.3	1.4	0	4.2	0	0	0	0	0	12	
13	22.5	0	4.6	1.1	7.4	0	48.3 +	0	0	3.3	0.7	0	13	
14	53.7 +	0	16.0 +	0	0.1	0	6.3	0.1	0.3	0	7.3	0	14	
15	9.3	0.3	12.2	0	8.0	0	37.6	0.3	3.2	0	0	0.1	15	
<b>mm</b>														
16	0.2	0.4	0.8	0	10.3	0	2.1	0.1	9.6	0	0	0	16	
17	5.7	1.7	1.7	0	8.3	0	0.1	0.2	0	0	0	0	17	
18	0	0	0	0.2	3.1	0	0.2	0.2	0.0	0	0	0	18	
19	0	0.1	0.9	0	13.9	0	3.2	0	15.7 +	0	0	0	19	
20	0	0	0	0	0.8	5.2	0	0	0.5	0	0	0	20	
21	0.3	0	0	0	21.7 +	8.5	0	0	0.0	3.0	0	0	21	
22	9.6	0	0	0.2	2.2	16.3	0	1.4	0	2.8	0.3	0	22	
23	10.3	0	0	0	6.3	29.9	0	0	0	0	0	0.1	23	
<b>+ Maximum</b>														
24	0	0	0	0	10.8	30.0 +	4.3	0	0	0	0	1.1	24	
25	2.6	0	0	0	0.6	0.8	6.0	0	1.2	0	0.8	12.6	25	
26	0	0	0	0	0.3	0	38.1	0	1.8	0.6	0.5	12.0	26	
27	8.8	0	6.8	0	2.9	6.7	0.1	0	0.2	0	1.2	7.8	27	
28	23.7	0	0	0.6	0	16.2	10.9	0.1	0.1	0	4.3	8.5	28	
29	19.9	0	0	0.7	0	21.6	0	0	0.5	0.1	2.4	16.6	29	
30	9.0	0	0	12.2	0	8.3	0.6	0	0	0.4	4.1	1.6	30	
31	0.4	0	0	0	0	0	3.9	0	0	0.1	0	0	31	
<b>Monatssumme</b>	<b>189.1</b>	<b>30.0</b>	<b>53.5</b>	<b>42.8</b>	<b>165.6</b>	<b>214.7 +</b>	<b>213.9</b>	<b>32.6</b>	<b>36.6</b>	<b>19.8 -</b>	<b>36.9</b>	<b>116.0</b>	<b>mm</b>	
<b>Niederschlagstage</b>	<b>13</b>	<b>6</b>	<b>8</b>	<b>5 -</b>	<b>18 +</b>	<b>14</b>	<b>18 +</b>	<b>6</b>	<b>6</b>	<b>6</b>	<b>8</b>	<b>16</b>	<b>Tage</b>	
<b>Niederschlagstage grösser oder gleich als [mm]</b>	184 >= 0.1		67 >= 5			38 >= 10		12 >= 20		1 >= 50		>= 100		<b>Tage</b>
<b>Jahreswerte</b>	<b>Gesamtniederschlag 1151.5 mm</b>					<b>Niederschlagstage 124 Tage</b>								

<p>— Ganglinie der täglichen Niederschlagshöhen      - - - Dauerlinie der täglichen Niederschlagshöhen (erreicht oder überschritten)</p>												
<p>1                    31                    59                    90                    120                    151                    181                    212                    243                    273                    304                    334                    365 Tage</p>												
<p>mm</p>												
<p>55.00</p>												
<p>41.25</p>												
<p>27.50</p>												
<p>13.75</p>												
<p>0.00</p>												
<p>I                    II                    III                    IV                    V                    VI                    VII                    VIII                    IX                    X                    XI                    XII</p>												

Periode	1999 - 2021											(23 Jahre)	
Mit Monatssumme	72.6	54.4 -	65.7	66.2	104.9 +	97.4	100.7	99.1	65.9	72.4	69.3	81.3	mm
Max Tagessumme	53.7	27.3 -	33.6	39.3	102.2 +	40.4	92.9	57.8	62.0	39.4	64.1	34.3	mm
Jahr	2021	2017	2006	2008	1999	2017	2013	2007	2006	2006	2015	2011	
Periode	Max Gesamtniederschlag 1242.1 (2016)					Min Gesamtniederschlag 637.6 (2003)							mm

Darstellung der letzten 12 Jahre													
<p>260.0</p>													
<p>195.0</p>													
<p>130.0</p>													
<p>65.0</p>													
<p>0.0</p>													
<p>2010                    2011                    2012                    2013                    2014                    2015                    2016                    2017                    2018                    2019                    2020                    2021</p>													
Jahressumme	859.9	745.4	1018.9	1092.1	977.5	867.7	1242.1	1056.9	960.7	910.9	956.5	1151.5	mm

Die Daten werden seit 2013 freundlicherweise von der AEN AG zur Verfügung gestellt.

# Niederschlag

# Gheid - Olten

633/243/012

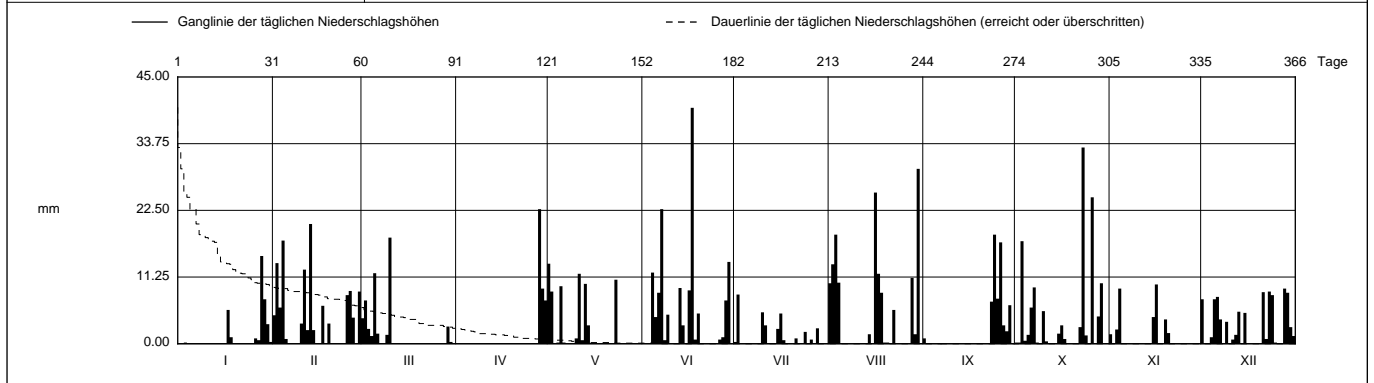
Koordinaten 2 633 985 / 1 243 535

Stations Höhe 418.0 mÜM

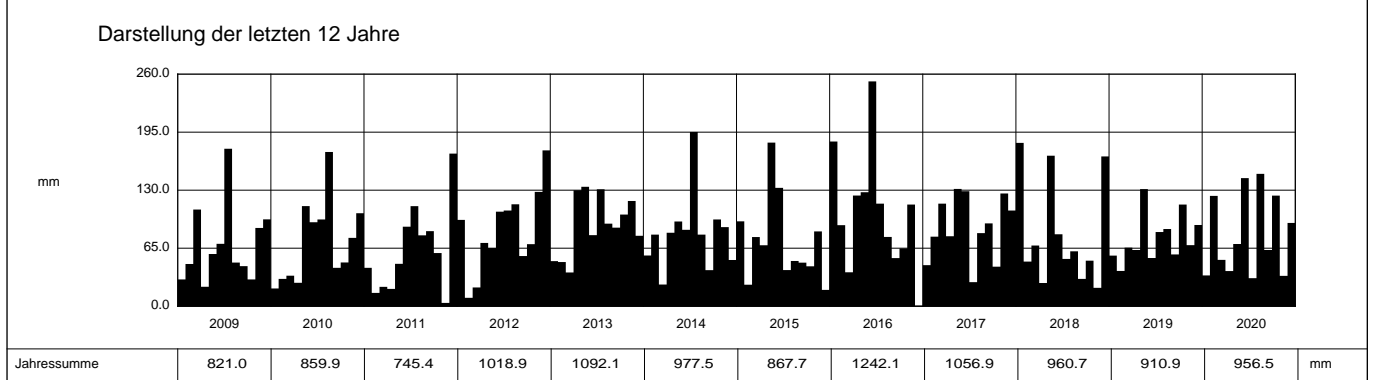
Fläche - km2

2020	Jan	Feb	März	April	Mai	Juni	Juli	Aug	Sept	Okt	Nov	Dez	
1	0	4.8	4.3	0	13.5 +	0	0.3	10.2	0.9	0.2	1.6	7.5	1
2	0	13.6	7.3	0	8.8	0	8.3 +	13.4	0	0.2	0.1	0	2
3	0.2	6.1	2.5	0	0	0	0	18.4	0	17.3	2.4	0	3
4	0.1	17.4	1.3	0	0.2	12.0	0	10.3	0	0.5	9.3	1.1	4
5	0	0.8	11.9	0	9.7	4.5	0	0	0	1.5	0	7.5	5
<b>Tägliche Niederschlags-höhen</b>													
6	0	0	1.7	0	0.2	8.6	0	0	0	6.1	0	7.9	6
7	0	0	0.1	0	0	22.7	0	0	0	9.5	0	4.1	7
8	0	0	0.1	0	0	0.6	0	0	0	0.2	0	0	8
9	0	0	1.5	0	0	4.9	0	0	0	0	0	3.7	9
10	0	3.4	17.9 +	0	0.9	0.1	5.3	0	0	5.5	0.1	0	10
11	0	12.5	0.1	0	11.8	0.1	3.1	0	0	0.4	0.1	0.7	11
12	0	2.3	0	0	0.6	0	0	0.1	0	0	0	1.5	12
13	0	20.2 +	0	0	10.1	9.4	0	0	0	0	0	5.4	13
14	0	2.3	0	0	3.1	3.1	0	1.6	0	0	0	0	14
15	0	0	0	0	0	0	2.5	0	0	1.7	4.5	5.2	15
mm													
16	0	0	0	0	0	9.0	5.1	25.5	0	3.1	10.0 +	0	16
17	5.7	6.4	0	0	0	39.8 +	0.6	11.8	0	0.8	0	0	17
18	1.1	0	0	0	0	0	0	8.6	0	0	0	0	18
19	0	3.4	0	0	0	5.1	0	0.2	0	0	4.1	0	19
20	0	0	0	0	0	0	0	0.2	0.1	0	1.8	0	20
21	0	0.1	0	0	0	0	0.9	0	0	0	0	8.7	21
22	0	0	0	0	0	0	0	5.7	0	2.8	0	0.8	22
23	0	0	0	0	10.8	0	0	0	7.1	33.1 +	0	8.8	23
<b>+ Maximum</b>													
24	0	0	0	0	0	0	2.0	0	18.4 +	1.4 +	0	8.2	24
25	0	8.2	0	0	0	0	0	0	7.6	0	0	0.2	25
26	0.9	8.9	0	0.1	0	0.7	0.7	0	17.1	24.7	0	0	26
27	0.6	4.4	0	0	0	1.1	0	3.1	0	0	0	0	27
28	14.8 +	0	0	22.7 +	0	7.3	2.6	11.1	2.1	4.6	0	9.3 +	28
29	7.5	8.8	2.9	9.3	0	13.8	0	1.6	6.5	10.2	0	8.6	29
30	3.3	0	0.3	7.3	0	0	0	29.5 +	0.1	0	0	2.8	30
31	0.3	0	0	0	0	0	0	0.1	0	0.1	0	1.3	31

Monatssumme	34.5	123.6	51.9	39.4	69.7	143.5	31.4 -	148.3 +	63.0	123.9	34.0	93.3	mm	
Niederschlagstage	5	15	9	3 -	7	13	7	12	7	13	7	16 +	Tage	
Niederschlagstage grösser oder gleich als [mm]	159 >= 0.1		70 >= 5			31 >= 10		8 >= 20		>= 50		>= 100		Tage
Jahreswerte	Gesamtniederschlag 956.5 mm					Niederschlagstage 114 Tage								



Periode	1999 - 2020											(22 Jahre)	
Mit Monatssumme	67.4	55.5 -	66.2	67.3	102.1 +	92.1	95.5	102.1 +	67.3	74.8	70.8	79.8	mm
Max Tagessumme	46.2	27.3 -	33.6	39.3	102.2 +	40.4	92.9	57.8	62.0	39.4	64.1	34.3	mm
Jahr	2018	2017	2006	2008	1999	2017	2013	2007	2006	2006	2015	2011	
Periode	Max Gesamtniederschlag 1242.1 (2016)					Min Gesamtniederschlag 637.6 (2003)							mm



Die Daten werden seit 2013 freundlicherweise von der AEN AG zur Verfügung gestellt.

# Niederschlag

# Gheid - Olten

633/243/012

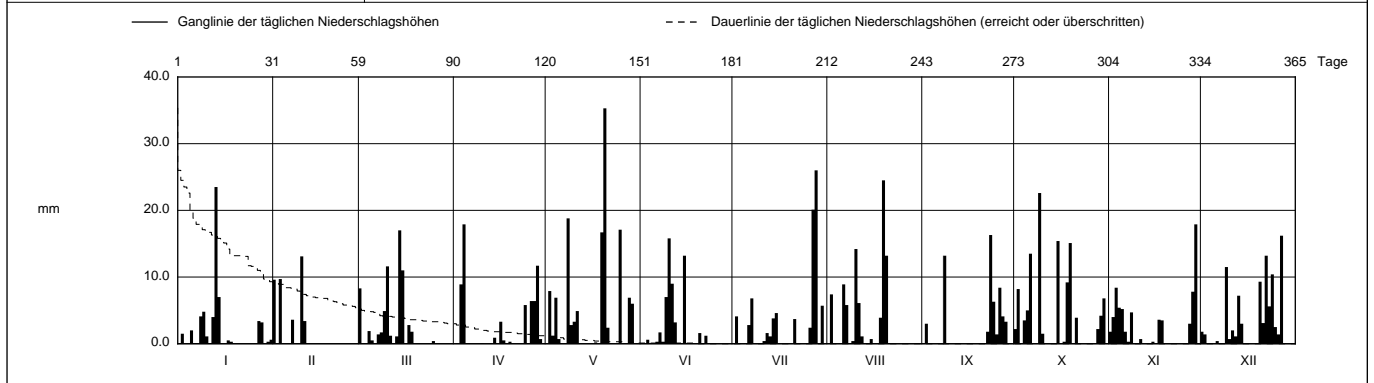
Koordinaten 2 633 985 / 1 243 535

Stations Höhe 418.0 müM

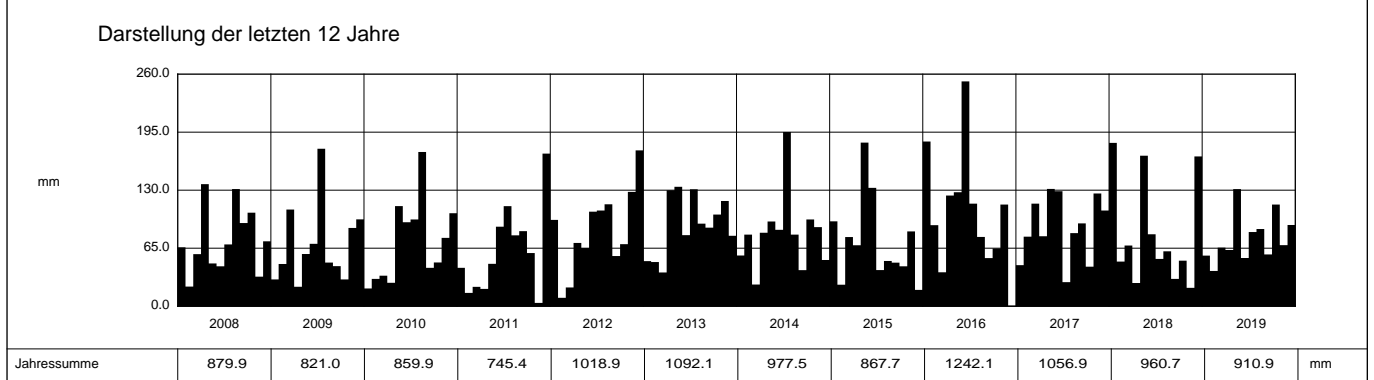
Fläche - km2

2019	Jan	Feb	März	April	Mai	Juni	Juli	Aug	Sept	Okt	Nov	Dez	
1	0.1	9.6	8.3	0	0	0	0	0	0	2.2	1.8	1.8	1
2	1.5	0.1	0	0	7.9	0	4.1	7.4	3.0	8.2	4.0	1.4	2
3	0	9.7	0	8.9	1.2	0.6	0	0	0	0.1	8.4	0	3
4	0	0	1.9	17.9 +	6.9	0	0	0	0	3.5	5.4	0	4
5	2.0	0	0.5	0	0.7	0	0	0.1	0	5.0	5.2	0	5
<b>Tägliche Niederschlags-höhen</b>													
6	0.1	0	0	0	0	0.3	2.8	8.9	0.1	13.5	1.8	0.4	6
7	0.1	3.6	1.4	0	0	1.7	6.8	5.8	0	0	0.3	0.1	7
8	4.1	0	1.7	0	18.8	0.3	0	0.1	13.2	0	4.7	0	8
9	4.8	0	4.9	0	2.8	7.0	0	0.4	0	22.6 +	0	11.5	9
10	1.1	13.1 +	11.6	0.1	3.3	15.8 +	0	14.2	0	1.5	0	0.7	10
11	0.1	3.4	1.2	0	4.9	9.0	0.4	6.1	0	0	0.7	2.0	11
12	4.0	0	0	0	0	3.2	1.6	1.1	0	0	0	1.1	12
13	23.5 +	0	1.1	0	0	0.1	1.1	0	0	0	0	7.2	13
14	7.0	0	17.0 +	0.9	0	0	3.8	0	0	0	0	3.0	14
15	0	0	11.0	0	0	13.2	4.6	0.7	0	15.4	0.3	0	15
mm													
16	0	0	0	3.3	0	0	0	0	0	0.1	0	0	16
17	0.5	0	2.8	0.5	0.2	0	0	0	0	0.3	3.6	0	17
18	0.3	0	1.8	0	0	0	0	3.9	0	9.2	3.5	0	18
19	0	0	0	0.3	16.7	0	0	24.5 +	0	15.1	0	0	19
20	0	0	0	0	35.3 +	1.6	0	13.2	0	0	0	9.3	20
21	0	0	0	0	2.4	0	3.7	0.1	0	3.9	0	3.1	21
22	0	0	0	0	0.1	1.2	0	0	1.8	0.1	0	13.2	22
23	0	0	0	0	0	0	0	0	16.3 +	0	0	5.6	23
<b>+ Maximum</b>													
24	0	0	0	5.8	0	0	0	0	6.3	0	0	10.4	24
25	0	0	0.4	0.1	17.1	0	0	0	1.4	0	0	2.5	25
26	0	0	0	6.4	0	0	2.4	0	8.4	0	0	1.4	26
27	3.4	0	0	6.4	0	0	20.1	0	4.1	0	3.0	16.2 +	27
28	3.2	0	0	11.7	6.9	0	26.0 +	0	3.3	2.2	7.8	0.1	28
29	0	0	0	0.7	6.0	0	0	0	0.1	4.2	17.9 +	0	29
30	0.3	0	0	0	0	0	5.7	0	0	6.8	0	0	30
31	0.6	0	0	0	0	0	0	0	0	0	0	0	31

Monatssumme	56.7	39.5 -	65.6	63.0	131.2 +	54.0	83.1	86.5	58.0	113.9	68.4	91.0	mm	
Niederschlagstage	10	5 -	12	7	13	8	12	9	9	14	12	15 +	Tage	
Niederschlagstage grösser oder gleich als [mm]	169 >= 0.1		62 >= 5			29 >= 10		6 >= 20		>= 50		>= 100		Tage
Jahreswerte	Gesamtniederschlag 910.9 mm				Niederschlagstage 126 Tage									



Periode	1999 - 2019											(21 Jahre)	
Mit Monatssumme	68.9	52.3 -	66.9	68.6	103.7 +	89.7	98.6	100.0	67.5	72.4	72.5	79.1	mm
Max Tagessumme Jahr	46.2 2018	27.3 - 2017	33.6 2006	39.3 2008	102.2 + 1999	40.4 2017	92.9 2013	57.8 2007	62.0 2006	39.4 2006	64.1 2015	34.3 2011	mm
Periode	Max Gesamtniederschlag 1242.1 (2016)					Min Gesamtniederschlag 637.6 (2003)							mm



Jahressumme	879.9	821.0	859.9	745.4	1018.9	1092.1	977.5	867.7	1242.1	1056.9	960.7	910.9	mm
-------------	-------	-------	-------	-------	--------	--------	-------	-------	--------	--------	-------	-------	----

Die Daten werden seit 2013 freundlicherweise von der AEN AG zur Verfügung gestellt.



# Niederschlag

# Gheid - Olten

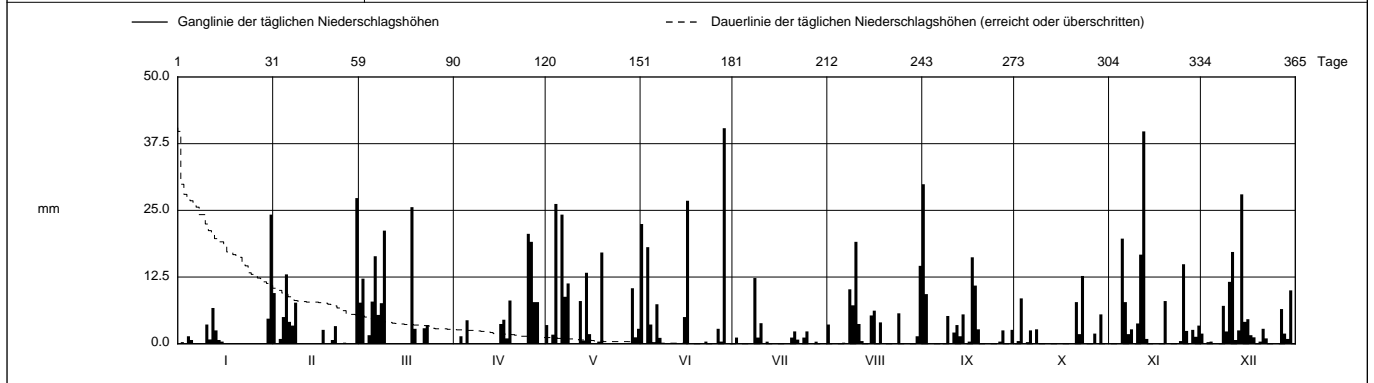
633/243/012

Koordinaten 2 633 985 / 1 243 535

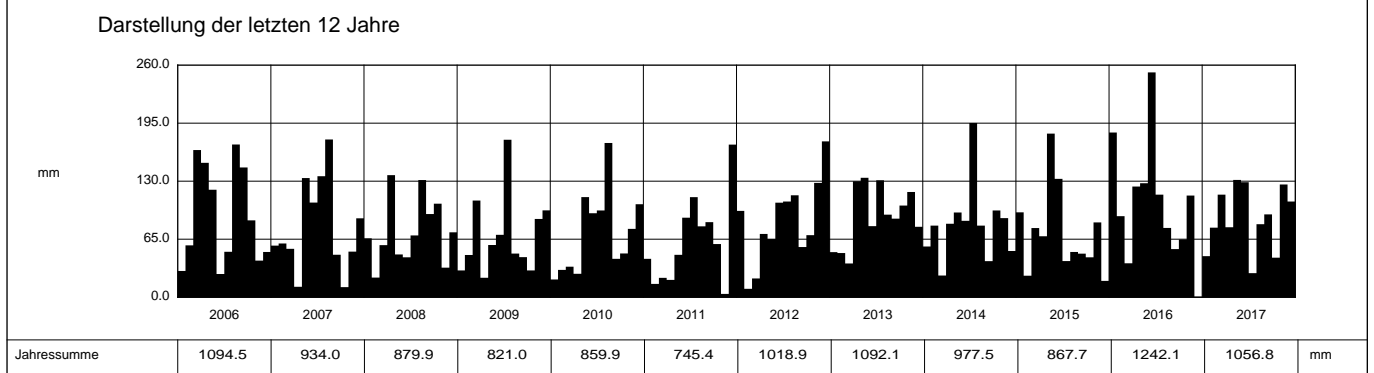
Stations Höhe 418.0 müM

Fläche - km2

2017		Jan	Feb	März	April	Mai	Juni	Juli	Aug	Sept	Okt	Nov	Dez		
1		0	9.5	7.7	0	3.5	22.4	0	3.6	29.9 +	0	0	1.9	1	
2		0.3	0.1	12.2	0	0	0	1.2	0	9.3	0.5	0	0	2	
3		0	0.9	0	1.4	1.7	18.1	0	0	0.1	8.5	0	0.3	3	
4		1.4	5.0	1.6	0	26.2 +	3.6	0	0	0	0	0	0.4	4	
5		0.7	13.0	7.9	4.4	0	0.3	0	0	0	0.3	19.7	0	5	
<b>Tägliche Niederschlags-höhen</b>															
6		0	4.1	16.4	0	24.2	7.4	0	0.2	0	2.5	7.8	0	6	
7		0	3.4	5.4	0	8.8	1.1	0	0	0	0	1.8	0	7	
8		0	7.7	7.6	0	11.3	0	12.3 +	10.2	0	2.7	2.7	7.1	8	
9		0	0	21.2	0	0.1	0	1.2	7.2	5.2	0	0	2.3	9	
10		3.6	0.1	0.1	0	0	0	3.8	19.1 +	0	0	3.8	11.6	10	
11		0.8	0	0	0	0	0	0	3.7	2.1	0	16.7	17.2	11	
12		6.7	0	0	0	8.0	0	0.4	0.5	3.5	0	39.8 +	0.7	12	
13		2.5	0	0	0	0.6	0	0	0	1.4	0	0.9	2.5	13	
14		0.7	0	0	0	13.3	0	0	0	5.5	0	0	28.0 +	14	
15		0.4	0	0	0	1.8	5.0	0	5.3	0.1	0	0	4.1	15	
<b>mm</b>															
16		0	0	0	3.7	0	26.8	0	6.2	0.4	0	0	4.6	16	
17		0	2.6	0	4.5	0	0	0	0.1	16.2	0	0	1.6	17	
18		0	0	25.6 +	1.0	0.4	0	0	4.0	10.9	0	0	1.2	18	
19		0	0	2.8	8.1	17.1	0	0	0	2.7	0	8.0	0	19	
20		0	0.7	0	0	0	0.1	1.2	0	0	0	0	0.4	20	
21		0	3.3	0	0	0	0	2.3	0	0	7.8	0	2.8	21	
22		0	0	2.9	0	0	0.4	0.8	0	0	1.8	0	1.0	22	
23		0	0	3.5	0	0	0	0	0	0	12.7 +	0	0	23	
<b>+ Maximum</b>															
24		0	0.2	0	0	0	0	1.2	5.7	0	0	0.5	0	24	
25		0	0	0	20.6 +	0	0	2.3	0	0	0	14.9	0	25	
26		0	0	0	19.1	0	2.8	0	0	0.4	0	2.4	0.1	26	
27		0	0	0	7.8	0	0.4	0	0	2.5	1.9	0	6.5	27	
28		0	27.3 +	0	7.8	0	40.4 +	0.4	0	0	0.1	2.6	1.9	28	
29		0	0	0	0	10.4	0	0	0	0	5.5	1.3	0.9	29	
30		4.7	0	0	0	1.2	0	0	1.4	2.6	0	3.4	10.0	30	
31		24.2 +	0	0	0	2.8	0	0	14.6	0	0	0	0.1	31	
<b>Monatssumme</b>		46.0	77.9	114.9	78.4	131.4 +	128.8	26.9 -	81.8	92.8	44.3	126.3	107.2	mm	
<b>Niederschlagstage</b>		6 -	9	12	10	13	9	8	11	12	8	13	16 +	Tage	
<b>Niederschlagstage grösser oder gleich als [mm]</b>		167 >= 0.1		64 >= 5			35 >= 10		13 >= 20		>= 50		>= 100		Tage
<b>Jahreswerte</b>		Gesamtniederschlag 1056.8 mm					Niederschlagstage 127 Tage								



Periode	1999 - 2017 (19 Jahre)												
Mit Monatssumme	63.6	53.1 -	66.9	71.1	98.8	92.0	101.8	102.7 +	69.9	71.4	75.5	73.8	mm
Max Tagessumme Jahr	33.1 2004	27.3 - 2017	33.6 2006	39.3 2008	102.2 + 1999	40.4 2017	92.9 2013	57.8 2007	62.0 2006	39.4 2006	64.1 2015	34.3 2011	mm
Periode	Max Gesamtniederschlag 1242.1 (2016)						Min Gesamtniederschlag 637.6 (2003)						mm



Jahressumme	2006	2007	2008	2009	2010	2011	2012	2013	2014	2015	2016	2017	mm
	1094.5	934.0	879.9	821.0	859.9	745.4	1018.9	1092.1	977.5	867.7	1242.1	1056.8	mm

Die Daten werden seit 2013 freundlicherweise von der AEN AG zur Verfügung gestellt.

# Niederschlag

# Gheid - Olten

633/243/012

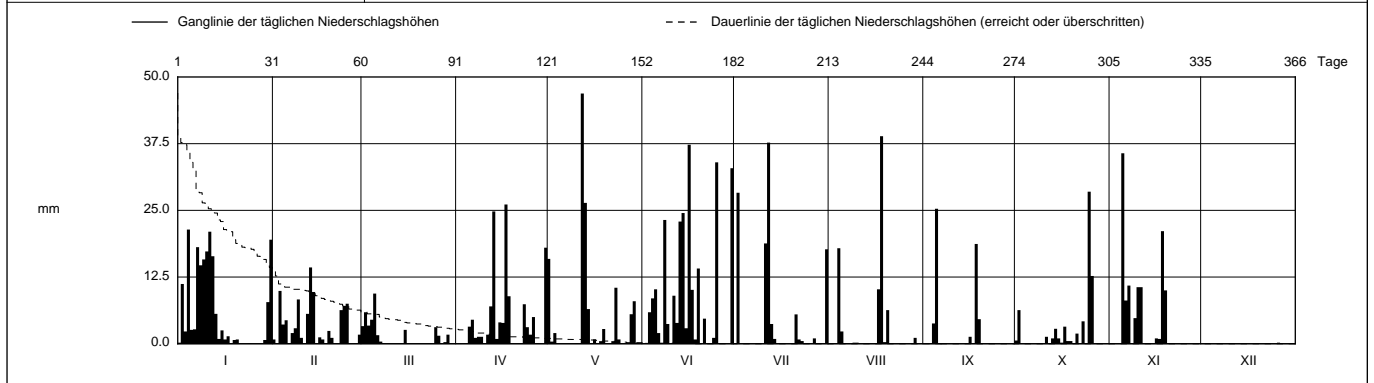
Koordinaten 2 633 985 / 1 243 535

Stations Höhe 418.0 müM

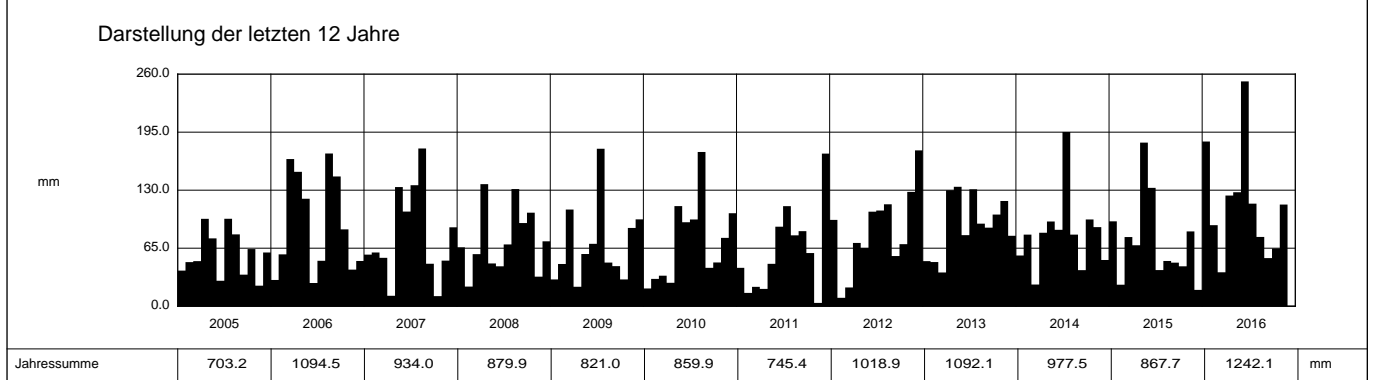
Fläche - km2

2016	Jan	Feb	März	April	Mai	Juni	Juli	Aug	Sept	Okt	Nov	Dez	
1	0.2	0.8	3.3	0	15.9	0	0	0	0	0.6	0	0	1
2	11.2	0	5.9	0	0.4	0.2	28.3	0	0	6.3	0	0	2
3	2.3	9.9	3.4	0	2.0	5.9	0	0	0	0	0	0	3
4	21.4 +	3.6	4.5	0	0	8.5	0	17.9	3.8	0	0	0	4
5	2.6	4.4	9.4 +	3.2	0	10.2	0	2.3	25.3 +	0	35.7 +	0	5
<b>Tägliche Niederschlags-höhen</b>													
6	2.7	0	1.6	4.5	0	2.0	0	0.1	0.1	0	8.1	0	6
7	18.1	2.0	0.4	1.1	0	0	0	0	0	0	10.9	0	7
8	14.7	2.9	0.1	1.3	0	23.2	0	0	0	0	0.1	0	8
9	15.8	8.3	0	1.3	0	3.7	0	0.2	0	0	4.8	0	9
10	17.3	1.1	0	0	0.1	0	0	0.2	0	0	10.6	0	10
11	21.0	0	0	1.7	0	9.0	18.8	0	0	1.3	10.6	0	11
12	16.4	5.6	0	7.0	46.9 +	3.9	37.7 +	0	0	0	0	0	12
13	5.6	14.3 +	0	24.8	26.4	22.9	3.7	0	0	1.0	0.1	0	13
14	0.9	9.7	0	0.9	6.5	24.5	0.9	0	0	2.8	0	0	14
15	2.5	0	2.6	4.0	0	2.9	0	0	0.1	1.0	0	0	15
mm													
16	0.8	1.2	0	3.9	0.8	37.3 +	0	0	1.3	0.2	1.0	0	16
17	1.4	0.8	0	26.1 +	0	10.1	0	10.2	0	3.2	0.9	0	17
18	0	0.1	0	8.9	0.5	0.8	0	38.9 +	18.7	0.5	21.1	0	18
19	0.7	2.4	0	0	2.8	14.1	0	0.3	4.6	0.5	10.0	0	19
20	0.8	1.1	0	0	0	0	0	6.3	0	0	0	0	20
21	0	0	0	0	0	4.7	5.5	0.1	0	1.9	0	0	21
22	0	0	0	0	0.5	0	0.8	0	0	0	0	0	22
23	0	6.3	0	7.4	10.5	0	0.5	0	0	4.2	0	0	23
+ Maximum													
24	0.1	7.1	0	3.1	0.8	1.1	0	0	0	0	0	0	24
25	0	7.5	3.1	1.7	0	34.0	0	0	0	28.5 +	0	0	25
26	0	0	1.5	5.0	0	0	0	0	0	12.7	0	0.2 +	26
27	0	0	0.1	0.1	0	0	1.0	0	0	0	0	0	27
28	0	0	0.3	0	5.5	0	0	0	0	0	0	0	28
29	0.7	1.7	1.7	0	8.0	0	0	1.1	0	0	0	0	29
30	7.8	0.1	0.1	18.0	0.2	32.9	0	0	0	0	0	0	30
31	19.5	0	0	0	0	0	17.7	0	0	0	0	0	31

Monatssumme	184.5	90.8	38.0	124.0	127.7	251.9 +	114.9	77.6	53.9	64.7	113.9	0.2 -	mm
Niederschlagstage	16	17	10	17	9	18 +	7	6	5	10	9	0 -	Tage
Niederschlagstage grösser oder gleich als [mm]	168 >= 0.1		68 >= 5			43 >= 10		19 >= 20		>= 50		>= 100	
Jahreswerte	Gesamtniederschlag 1242.1 mm					Niederschlagstage 124 Tage							



Periode	1999 - 2016 (18 Jahre)												
Mit Monatssumme	64.5	51.7 -	64.3	70.7	97.0	90.0	105.9 +	103.8	68.6	72.9	72.7	72.0	mm
Max Tagessumme Jahr	33.1 2004	23.8 - 2003	33.6 2006	39.3 2008	102.2 + 1999	37.3 2016	92.9 2013	57.8 2007	62.0 2006	39.4 2006	64.1 2015	34.3 2011	mm
Periode	Max Gesamtniederschlag 1242.1 (2016)					Min Gesamtniederschlag 637.6 (2003)							



Jahressumme	703.2	1094.5	934.0	879.9	821.0	859.9	745.4	1018.9	1092.1	977.5	867.7	1242.1	mm
-------------	-------	--------	-------	-------	-------	-------	-------	--------	--------	-------	-------	--------	----

Die Daten werden seit 2013 freundlicherweise von der AEN AG zur Verfügung gestellt.



# Niederschlag

# Gheid - Olten

633/243/012

Koordinaten 633 985 / 243 535

Stations Höhe 418.0 müM

Fläche - km2

2015	Jan	Feb	März	April	Mai	Juni	Juli	Aug	Sept	Okt	Nov	Dez		
1	0	3.2	3.8	2.0	77.8 +	0	0	4.5	5.5	0	0	0.1	1	
2	1.6	2.2	9.1	11.6	12.9	0	0	0	0	0	0	0	2	
3	18.0	0	0	2.6	28.2	0	0	0	0	0	0	0	3	
4	3.8	0	1.4	10.1	6.2	0	0	0.2	0	6.9	0	0.5	4	
5	0	0	0	0	5.5	0	0	0	0	3.6	0	0	5	
<b>Tägliche Niederschlags-höhen</b>														
6	0	0	0	0	13.4	0.4	0	0	0	9.0	0	0	6	
7	0	0	0	0	0	36.7 +	0	0	0.9	0	0	0	7	
8	1.5	0	0	0	3.9	0	0	0.1	0	0	0	0	8	
9	2.4	0	0	0	0	0	0	1.8	0	0	0	6.9 +	9	
10	0	0	0	0	0	0	0	0.3	0	0	0	0	10	
11	9.1	0	0	1.9	0	0	0	1.4	0.8	0	0.1	0	11	
12	0	0	0	0	0	0	0	0	1.3	0	0	0	12	
13	0	0	0	0	0	3.2	0	0.6	0.7	0.4	0.3	0	13	
14	6.3	0	0	0	0.4	25.0	0	1.4	14.1	0	0	0	14	
15	0	0	0	0	19.1	36.4	0	1.6	0	2.8	0	0	15	
mm														
16	5.5	0	0	0.6	0	4.8	0	5.8	0.2	0.2	0	4.0	16	
17	11.1	0	0	17.0 +	0	0	0	0	14.7 +	0.3	0.4	0	17	
18	0	0	0	4.9	0	11.2	5.3	0	1.0	10.3 +	0.3	0	18	
19	1.8	0	0	0	0.8	0.3	0	7.3	0.1	0	0.6	0.1	19	
20	3.6	0	0	0	0.6	0.1	0	0	0	0	64.1 +	0	20	
21	0	4.8	4.2	0	3.1	5.4	0	0	0	0	2.6	3.3	21	
22	0	1.6	0.1	0	0	5.7	0	0	3.4	0	1.9	0	22	
23	0	3.4	0	0	0	3.4	0.7	5.1	6.9	0	0.9	0	23	
<b>+ Maximum</b>														
24	1.3	0	0	0	0	0	12.7 +	20.6 +	0.1	0	0	0	24	
25	0.5	2.3	3.7	0.7	0.8	0	1.8	0	0	0	5.8	0	25	
26	2.6	0	1.7	0.6	10.6	0	7.0	0	0	0	1.2	0	26	
27	2.8	6.1 +	4.0	0	0	0	5.0	0	0	0	0	0	27	
28	0.9	0.5	0	11.9	0	0	0	0	0	3.4	1.9	0	28	
29	18.2 +	0	14.2	0	0	0	8.0	0	6.9	3.5	0	0	29	
30	3.9	0	31.5 +	4.4	0	0	0	0	0	0.2	0	0	30	
31	0.2	0	3.8	0	0	0	0	0	0	0	3.4	0	31	
<b>Monatssumme</b>	<b>95.1</b>	<b>24.1</b>	<b>77.5</b>	<b>68.3</b>	<b>183.3 +</b>	<b>132.6</b>	<b>40.5</b>	<b>50.7</b>	<b>48.8</b>	<b>44.7</b>	<b>83.8</b>	<b>18.3 -</b>	<b>mm</b>	
<b>Niederschlagstage</b>	<b>16 +</b>	<b>7</b>	<b>10</b>	<b>9</b>	<b>10</b>	<b>9</b>	<b>6</b>	<b>9</b>	<b>7</b>	<b>7</b>	<b>7</b>	<b>4 -</b>	<b>Tage</b>	
<b>Niederschlagstage grösser oder gleich als [mm]</b>	140 >= 0.1		48 >= 5			25 >= 10		8 >= 20		2 >= 50		>= 100		<b>Tage</b>
<b>Jahreswerte</b>	<b>Gesamtniederschlag 867.7 mm</b>					<b>Niederschlagstage 101 Tage</b>								

<p>— Ganglinie der täglichen Niederschlagshöhen      - - - Dauerlinie der täglichen Niederschlagshöhen (erreicht oder überschritten)</p>												
<p>1                      31                      59                      90                      120                      151                      181                      212                      243                      273                      304                      334                      365 Tage</p>												
<p>mm</p>												
<p>I                      II                      III                      IV                      V                      VI                      VII                      VIII                      IX                      X                      XI                      XII</p>												

Periode	1999 - 2015 (17 Jahre)												
Mit Monatssumme	57.5	49.4 -	65.8	67.6	95.2	80.4	105.4 +	105.4 +	69.5	73.4	70.2	76.2	mm
Max Tagessumme Jahr	33.1 2004	23.8 - 2003	33.6 2006	39.3 2008	102.2 + 1999	36.7 2015	92.9 2013	57.8 2007	62.0 2006	39.4 2006	64.1 2015	34.3 2011	mm
Periode	Max Gesamtniederschlag 1155.6 (2001)					Min Gesamtniederschlag 637.6 (2003)							mm

Darstellung der letzten 12 Jahre													
<p>mm</p>													
<p>2004                      2005                      2006                      2007                      2008                      2009                      2010                      2011                      2012                      2013                      2014                      2015</p>													
<b>Jahressumme</b>	<b>868.6</b>	<b>703.2</b>	<b>1094.5</b>	<b>934.0</b>	<b>879.9</b>	<b>821.0</b>	<b>859.9</b>	<b>745.4</b>	<b>1018.9</b>	<b>1092.1</b>	<b>977.5</b>	<b>867.7</b>	<b>mm</b>

Die Daten werden seit 2013 freundlicherweise von der AEN AG zur Verfügung gestellt.



# Niederschlag

# Gheid - Olten

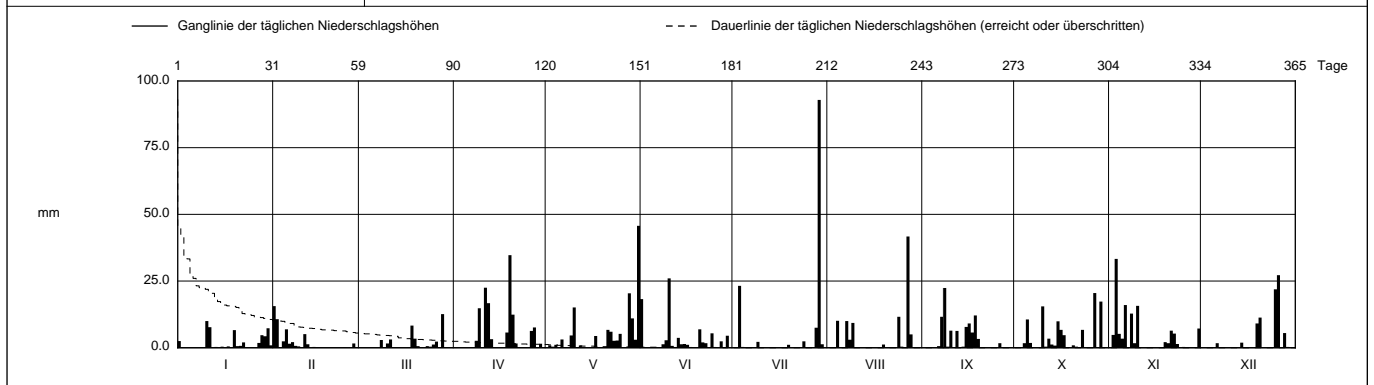
633/243/012

Koordinaten 633 985 / 243 535

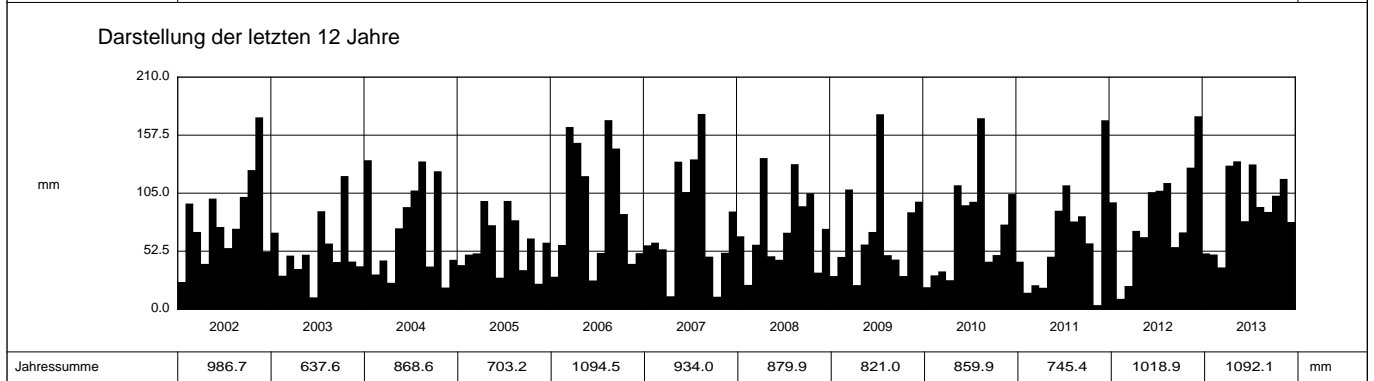
Stations Höhe 418.0 müM

Fläche - km2

2013		Jan	Feb	März	April	Mai	Juni	Juli	Aug	Sept	Okt	Nov	Dez		
1		2.5	15.6 +	0	0	0	18.2	0	0	0	0	0	0	1	
2		0.1	10.7	0	0	0.9	0	0	0	0	0	4.8	0	2	
3		0	0.1	0	0	0.4	0	23.2	0	0	0	33.3 +	0	3	
4		0	2.4	0	0	1.1	0	0.3	10.1	0	1.7	5.2	0	4	
5		0	6.9	0	0	0	0	0	0	0	10.6	3.4	0	5	
6	Tägliche Niederschlags-höhen	0	1.5	0	0	3.1	0	0	0	0.6	1.8	16.0	1.7	6	
7		0	2.1	0	0	0.1	0	0	10.0	11.6	0	0	0	7	
8		0	0.7	2.9	2.6	0	1.3	0	3.0	22.4 +	0	12.8	0	8	
9		0	0.5	0	14.8	4.6	2.8	2.2	9.3	0.4	0	1.7	0	9	
10		10.0 +	0.2	1.6	0.2	15.1	26.0 +	0	0	6.4	15.5	15.7	0	10	
11		7.7	5.1	3.1	22.5	0	0.7	0	0	0	0.4	0	0	11	
12		0	1.3	0.1	16.7	0.8	0	0	0	6.3	3.4	0	0	12	
13		0.3	0	0.2	3.2	0	3.7	0	0	0	1.2	0.1	0	13	
14		0	0.3	0.2	0	0	1.3	0	0	0.4	0.8	0	1.9	14	
15		0.4	0.2	0	0	0	1.4	0	0	7.8	9.9	0	0	15	
16	mm	0.1	0.1	0	0	0	1.1	0	0	9.1	6.7	0	0	16	
17		0.5	0	0.2	0	4.4	0	0	0	5.7	4.7	0	0	17	
18		0	0	8.3	5.7	0	0	0.1	0	12.1	0	0	0	18	
19		6.6	0	3.4	34.7 +	0	0	1.1	1.2	3.3	0	2.1	9.1	19	
20		0.6	0	0.6	12.4	0	6.9	0	0	0	0.9	1.7	11.3	20	
21		0.7	0	0.1	1.6	6.7	2.0	0	0	0	0.4	6.4	0	21	
22		2.0	0	0	0.1	6.0	1.7	0	0	0	0.1	5.3	0	22	
23		0	0	0.6	0	2.6	0	0	0	0	6.7	1.4	0	23	
24	+ Maximum	0	0.2	0.4	0	2.7	5.4	2.4	11.6	0	0	0.2	0	24	
25		0	0	1.2	0	5.2	0.2	0	0.4	0	0	0.3	21.9	25	
26		0	0	2.3	6.3	0	0	0	0.1	1.7	0	0.1	27.2 +	26	
27		1.8	1.6	0	7.6	0	2.4	0	41.7 +	0	20.5 +	0	0	27	
28		4.7	0	12.6 +	0	20.4	0	7.5	5.0	0.1	0.1	0	5.5	28	
29		4.3	0	0	1.5	11.0	4.5	92.9 +	0	0.1	17.3	0.2	0.3	29	
30		7.3	0	0	0	3.0	0	1.3	0	0	0	7.2	0	30	
31		0.9	0	0	0	45.7 +	0	0	0.1	0	0	0	0	31	
Monatssumme		50.5	49.5	37.8 -	129.9	133.8 +	79.6	131.0	92.5	88.0	102.7	117.9	78.9	mm	
Niederschlagstage		9	9	8	12	14 +	14 +	7 -	8	10	12	14 +	7 -	Tage	
Niederschlagstage grösser oder gleich als [mm]		178 >= 0.1		66 >= 5			35 >= 10		13 >= 20		1 >= 50		>= 100		Tage
Jahreswerte		Gesamtniederschlag 1092.1 mm					Niederschlagstage 124 Tage								



Periode	1999 - 2013 (15 Jahre)												
Mit Monatssumme	55.0	49.0 -	67.8	66.5	89.4	76.6	103.7	110.7 +	72.8	73.7	68.1	81.7	mm
Max Tagessumme Jahr	33.1 2004	23.8 - 2003	33.6 2006	39.3 2008	102.2 + 1999	35.6 2002	92.9 2013	57.8 2007	62.0 2006	39.4 2006	33.3 2013	34.3 2011	mm
Periode	Max Gesamtniederschlag 1155.6 (2001)						Min Gesamtniederschlag 637.6 (2003)						mm



Jahressumme	2002	2003	2004	2005	2006	2007	2008	2009	2010	2011	2012	2013	mm
Jahressumme	986.7	637.6	868.6	703.2	1094.5	934.0	879.9	821.0	859.9	745.4	1018.9	1092.1	mm

Die Daten werden ab 2013 freundlicherweise von der AEN AG zur Verfügung gestellt.



# Niederschlag

# Gheid - Olten

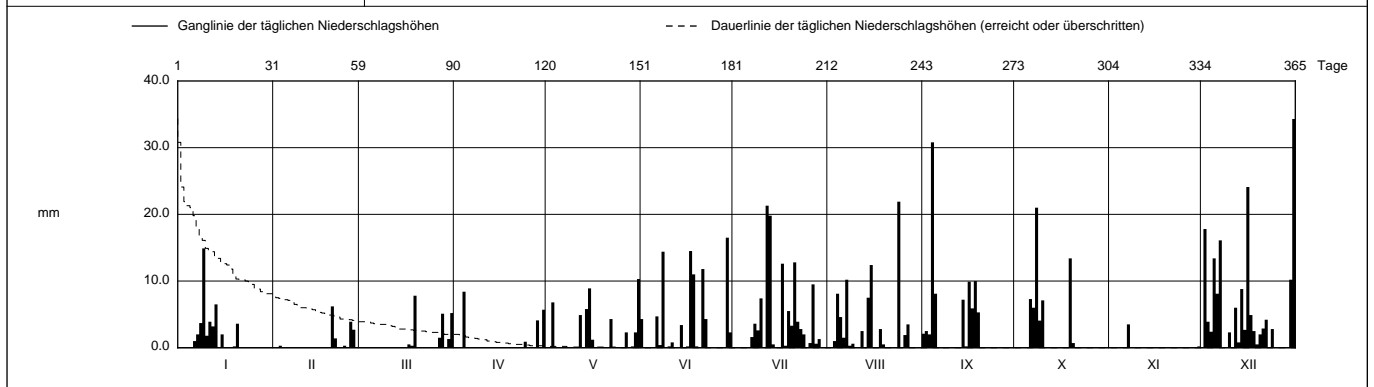
633/243/012

Koordinaten 633 985 / 243 535

Stations Höhe 418.0 müM

Fläche - km2

2011		Jan	Feb	März	April	Mai	Juni	Juli	Aug	Sept	Okt	Nov	Dez		
1		0	0	0	0	0	4.3	0	0	2.1	0	0	0	1	
2		0	0	0	0	0	0	0	0	2.5	0	0	17.8	2	
3		0	0.3	0	0	6.8	0	0	1.0	2.0	0	0	3.9	3	
4		0	0	0	8.4 +	0	0	0	8.1	30.8 +	0	0	2.4	4	
5		0	0	0	0	0.1	0	0	4.6	8.1	0	0	13.4	5	
<b>Tägliche Niederschlags-höhen</b>															
6		1.0	0	0	0	0	4.7	0	1.5	0	7.3	0	8.1	6	
7		2.0	0	0	0	0	0.4	1.6	10.2	0	6.0	3.5 +	16.1	7	
8		3.7	0	0	0	0	14.4	3.6	0.3	0	21.0 +	0	0.1	8	
9		14.9 +	0	0	0	0	0	2.6	0.6	0.1	4.1	0	0	9	
10		1.8	0	0	0	0	0.2	7.4	0	0	7.1	0	2.3	10	
11		3.9	0	0	0.1	0.1	0.8	0	0	0	0	0	0.1	11	
12		3.2	0	0	0	4.9	0	21.3 +	2.5	0	0	0	6.0	12	
13		6.5	0	0	0	0	0	19.8	0	0	0	0	0.8	13	
14		0	0	0	0	5.8	3.4	0.5	7.5	7.2	0	0	8.8	14	
15		2.0	0.1	0	0	8.9	0	0	12.4	0.2	0	0	2.7	15	
<b>mm</b>															
16		0	0	0	0	1.2	0.2	0	0	9.9	0	0	24.1	16	
17		0	0	0.5	0	0	14.5	12.6	0	5.9	0	0	4.9	17	
18		0	0	0.3	0	0	11.0	0.3	2.8	10.0	0	0	2.5	18	
19		0.2	0	7.8 +	0.1	0	0.2	5.5	0.5	5.3	13.4	0	0.5	19	
20		3.6	6.2 +	0	0	0.1	0	3.3	0	0	0.7	0	2.0	20	
21		0.1	1.4	0	0	0	11.8	12.8	0	0	0	0	2.9	21	
22		0	0	0	0.1	4.3	4.3	3.9	0	0	0	0	4.2	22	
23		0	0	0	0	0	0	2.8	0	0	0	0	0	23	
<b>+ Maximum</b>															
24		0	0.3	0	0.9	0.1	0	2.0	21.9 +	0	0	0	2.8	24	
25		0.1	0	0	0	0	0	0	0.1	0	0	0	0.1	25	
26		0	3.9	0	0	0	0	0.7	1.9	0	0	0	0	26	
27		0	2.7	1.5	0	2.3	0.1	9.5	3.5	0	0	0	0	27	
28		0	0	5.1	4.1	0.1	0	0.6	0	0	0	0	0	28	
29		0	0	0	0	0.2	16.5 +	1.3	0	0	0	0	0	29	
30		0	0	1.3	5.7	2.3	2.3	0	0	0	0	0.2	10.2	30	
31		0	0	5.2	0	10.3 +	0	0	0	0	0	0	34.3 +	31	
<b>Monatssumme</b>		43.0	14.9	21.7	19.4	47.5	89.1	112.1	79.4	84.1	59.6	3.7 -	171.0 +	mm	
<b>Niederschlagstage</b>		10	4	5	3	9	10	15	12	10	6	1 -	19 +	Tage	
<b>Niederschlagstage grösser oder gleich als [mm]</b>		145 >= 0.1		50 >= 5			24 >= 10		6 >= 20		>= 50		>= 100		Tage
<b>Jahreswerte</b>		Gesamtniederschlag 745.4 mm					Niederschlagstage 104 Tage								



Periode	1999 - 2011 (13 Jahre)												
Mit Monatssumme	52.2	52.0 -	73.7	61.3	87.8	74.1	101.4	111.8 +	72.9	71.8	59.7	74.7	mm
Max Tagessumme Jahr	33.1 2004	23.8 - 2003	33.6 2006	39.3 2008	102.2 + 1999	35.6 2002	38.3 2009	57.8 2007	62.0 2006	39.4 2006	28.8 2002	34.3 2011	mm
Periode	Max Gesamtniederschlag 1155.6 (2001)						Min Gesamtniederschlag 637.6 (2003)						mm

