

Niederschlag

Spitzacker - Schönenwerd

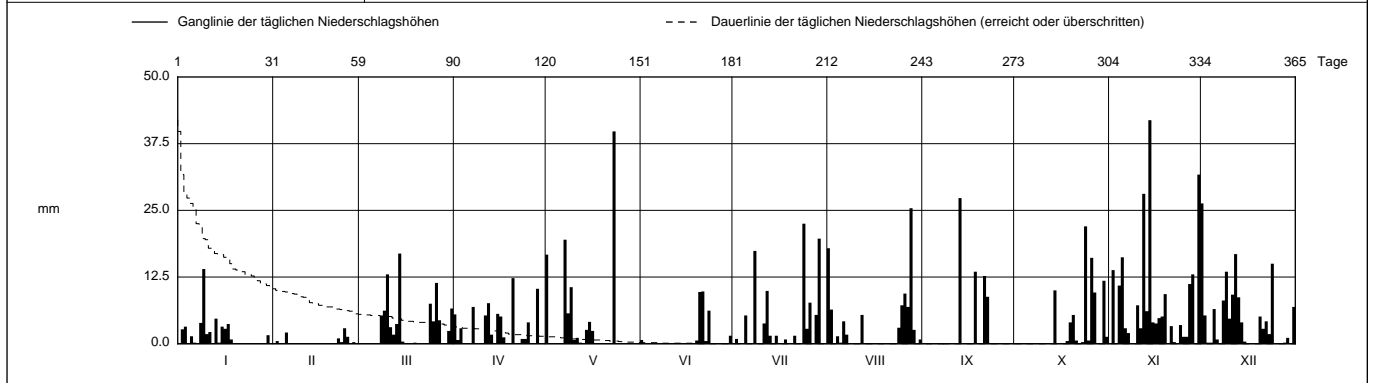
SO 642/246/027

Koordinaten 2 642 380 / 1 246 100

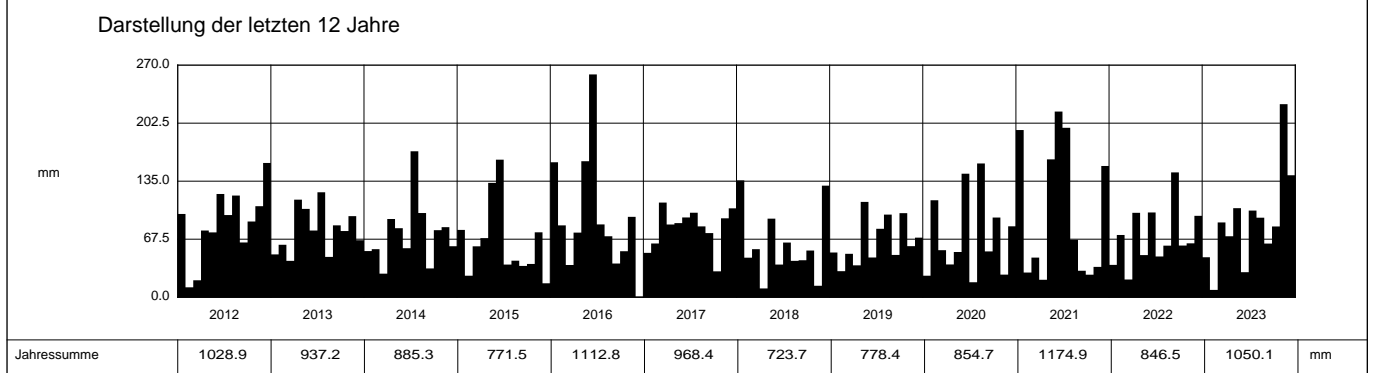
Stations Höhe 394.5 mÜM

Fläche - km2

2023		Jan	Feb	Mar	Apr	Mai	Jun	Jul	Aug	Sep	Okt	Nov	Dez		
1		0	0	0	5.5	16.7	0.7	0	17.9	0	0	0	26.3 +	1	
2		2.7	0.5	0	0.7	0.1	0	0.9	6.4	0	0	13.8	5.3	2	
3		3.2	0	0	2.9	0	0.1	0	0	0	0	0	0.2	3	
4		0	0	0	0	0	0	0	1.4	0	0	10.9	0.2	4	
5		1.4	2.1	0	0	0	0	5.3	0.2	0	0	16.2	6.5	5	
Tägliche Niederschlags-höhen															
6		0.2	0	0	0	0.1	0	0	4.2	0	0	2.9	0.8	6	
7		0	0	0	6.9	19.5	0	0	1.7	0	0	2.0	0	7	
8		3.9	0	5.2	0	5.7	0	17.4	0	0	0	0	8.1	8	
9		14.0 +	0	6.2	0	10.6	0	0	0	0	0	0	13.5	9	
10		1.8	0	13.0	0	0.7	0	0	0	0	0	7.2	4.7	10	
11		2.2	0	3.1	5.3	1.1	0	3.8	0	0	0	2.9	9.2	11	
12		0	0	1.7	7.6	0.2	0	9.9	5.4	0	0	28.1	16.8	12	
13		4.7	0	3.7	1.7	0	0	1.5	0	27.3 +	0	6.1	8.7	13	
14		0.2	0	16.9 +	0	2.6	0	0	0	0	10.0	41.9 +	4.0	14	
15		3.2	0	0.4	5.6	4.1	0	1.5	0	0	0.1	4.0	0.4	15	
mm															
16		2.8	0	0	5.1	2.4	0	0.1	0	0	0	3.8	0	16	
17		3.7	0	0	1.2	0	0	0	0	0	0	4.8	0	17	
18		0.8	0	0	0	0	0	0.8	0	13.5	0.5	5.1	0	18	
19		0	0.1	0.2	0	0	0.6	0	0	0.1	4.0	9.3	0	19	
20		0	0	0	12.3 +	0	9.7	0	0	0	5.4	0	5.1	20	
21		0	0	0	0	0	9.8 +	1.5	0	12.7	0.6	3.3	2.8	21	
22		0	1.0	0	0	0	0.5	0	0	8.8	0	0.3	4.2	22	
23		0	0.3	0	0.9	39.8 +	6.2	0	0	0	0.3	0	1.8	23	
+ Maximum															
24		0	2.9 +	7.5	0.9	0	0	22.5 +	3.0	0	22.0 +	3.5	15.0	24	
25		0.1	1.3	4.2	4.0	0	0	2.8	7.2	0	0.6	1.3	0.1	25	
26		0	0	11.4	0	0	0	7.7	9.4	0	16.1	1.3	0	26	
27		0	0.3	4.4	0	0	0	0	6.9	0	9.6	11.2	0	27	
28		0	0	0	10.3	0	0	5.4	25.4 +	0	0	13.0	0.2	28	
29		0	0	0.1	0	0	0	19.7	2.6	0	0	0	1.1	29	
30		1.6	0	2.4	0	0	1.5	0	0	0	11.8	31.7	0	30	
31		0	0	6.6	0	0	0	0	0.8	0	1.3	0	6.9	31	
Monatssumme		46.5	8.5 -	87.0	70.9	103.6	29.1	100.8	92.5	62.4	82.3	224.6 +	141.9	mm	
Niederschlagstage		12	4 -	13	12	9	4 -	12	12	4 -	8	22 +	17	Tage	
Niederschlagstage grösser oder gleich als [mm]		169 >= 0.1		71 >= 5			34 >= 10		9 >= 20		>= 50		>= 100		Tage
Jahreswerte		Gesamtniederschlag 1050.1 mm					Niederschlagstage 129 Tage								



Periode	2001 - 2023 (23 Jahre)												
Mit Monatssumme	72.8	49.9 -	65.7	67.5	91.0	91.9	99.7 +	96.4	64.8	72.0	71.3	86.9	mm
Max Tagessumme	47.1	32.2 -	34.5	43.4	50.7	51.7	82.4 +	68.4	49.5	47.1	53.5	45.4	mm
Jahr	2021	2006	2006	2008	2016	2015	2013	2007	2008	2006	2015	2021	
Periode	Max Gesamtniederschlag 1248.7 (2001)						Min Gesamtniederschlag 723.7 (2018)						mm



Jahressumme	1028.9	937.2	885.3	771.5	1112.8	968.4	723.7	778.4	854.7	1174.9	846.5	1050.1	mm
--------------------	--------	-------	-------	-------	--------	-------	-------	-------	-------	--------	-------	--------	----

Niederschlag

Spitzacker - Schönenwerd

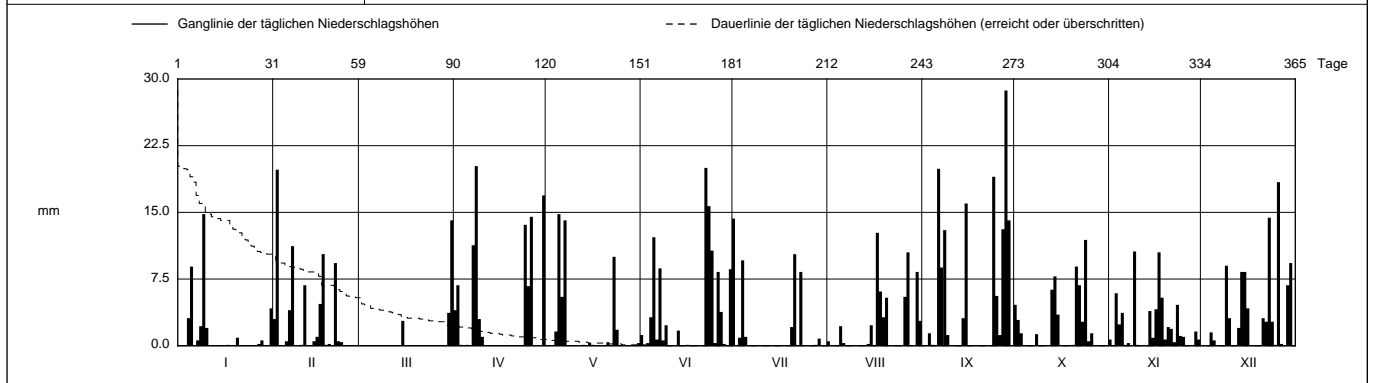
SO 642/246/027

Koordinaten 2 642 380 / 1 246 100

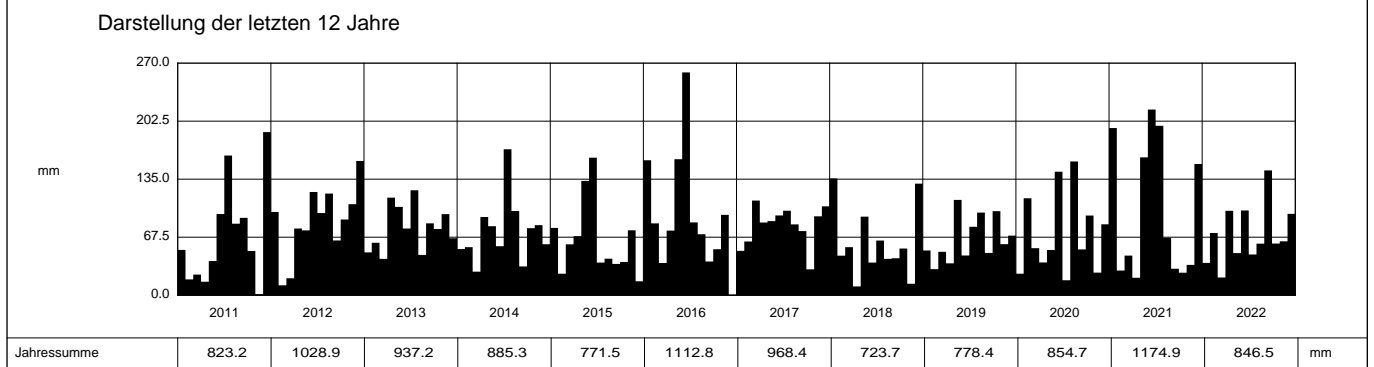
Stations Höhe 394.5 mÜM

Fläche - km2

2022		Jan	Feb	Mar	Apr	Mai	Jun	Jul	Aug	Sep	Okt	Nov	Dez		
1		0	3.0	0	4.0	0	1.2	14.3 +	0.5	0	4.6	0.7	0	1	
2		0	19.8 +	0	6.8	0	0	0	0	0	2.9	0	0	2	
3		0	0	0	0.1	0	0.3	0.9	0	1.4	1.4	5.9	0	3	
4		3.1	0	0	0	1.6	3.2	9.6	0	0.1	0	2.4	1.5	4	
5		8.9	0.5	0	0.1	14.8 +	12.2	1.0	2.2	0	0	3.7	0.6	5	
6	Tägliche Niederschlags-höhen	0	4.0	0	0	5.5	0.7	0	0.3	19.9	0	0.1	0	6	
7		0.6	11.2	0	11.3	14.1	8.7	0	0	8.8	0	0.3	0	7	
8		2.2	0	0	20.2 +	0	0.6	0	0	13.0	1.3	0	0	8	
9		14.8 +	0	0	3.0	0	2.3	0	0	1.2	0	10.6 +	9.0	9	
10		2.0	0.1	0	1.0	0	0	0	0	0	0	0.1	3.1	10	
11		0	6.8	0	0	0	0	0	0	0	0	0	0	11	
12		0	0	0	0	0	0	0	0	0	0	0	0	12	
13		0	0	0	0	0.1	1.7	0	0	0	6.3	0	2.0	13	
14		0	0.5	0	0	0	0	0	0.2	3.1	7.8	3.9	8.3	14	
15		0	1.0	2.8	0	0.3	0	0	2.3	16.0	3.5	0.9	8.3	15	
16	mm	0	4.7	0	0	0.1	0.1	0	0	0	0	4.1	4.2	16	
17		0.1	10.3	0	0	0	0	0	12.7 +	0	0	10.5	0	17	
18		0	0.1	0	0	0	0	0	6.1	0	0	5.4	0	18	
19		0	0.2	0	0	0	0	0	3.2	0	0	0.7	0	19	
20		0.9	0	0	0	0	0	2.1	5.4	0	0.1	2.1	0	20	
21		0	9.3	0	0	0.4	0	10.3	0	0	8.9	1.9	3.1	21	
22		0	0.5	0	0	0	20.0 +	0	0	0	6.8	0.4	2.7	22	
23		0	0.4	0	0	10.0	15.7	8.3	0	0	2.7	4.6	14.4	23	
24	+ Maximum	0	0	0	13.6	1.8	10.7	0	0	19.0	11.9 +	1.1	2.7	24	
25		0	0	0	6.7	0	0.3	0	0	5.6	0.5	1.0	0.1	25	
26		0	0	0	14.5	0	8.3	0	5.5	1.2	1.4	0	18.4 +	26	
27		0.2	0	0	0	0	3.8	0	10.5	13.1	0	0	0.2	27	
28		0.6	0	0	0	0	0.2	0.1	0	28.7 +	0	0	0	28	
29		0	0	0	0	0	0	0.8	0	14.1	0	1.6	6.8	29	
30		0	0	3.7	16.9	0	8.6	0	8.3	0	0	0.7	9.3	30	
31		4.2	0	14.1 +	0	0.3	0	0	2.8	0	0	0	0	31	
Monatssumme		37.6	72.4	20.6 -	98.2	49.0	98.6	47.4	60.0	145.2 +	60.1	62.7	94.7	mm	
Niederschlagstage		6	9	3 -	10	6	12	6	10	13	12	14 +	14 +	Tage	
Niederschlagstage grösser oder gleich als [mm]		160 >= 0.1		61 >= 5			33 >= 10		3 >= 20		>= 50		>= 100		Tage
Jahreswerte		Gesamtniederschlag 846.5 mm				Niederschlagstage 115 Tage									



Periode	2001 - 2022 (22 Jahre)												
Mit Monatssumme	74.0	51.8 -	64.7	67.4	90.5	94.8	99.7 +	96.6	64.9	71.6	64.4	84.4	mm
Max Tagessumme Jahr	47.1 2021	32.2 - 2006	34.5 2006	43.4 2008	50.7 2016	51.7 2015	82.4 + 2013	68.4 2007	49.5 2008	47.1 2006	53.5 2015	45.4 2021	mm
Periode	Max Gesamtniederschlag 1248.7 (2001)						Min Gesamtniederschlag 723.7 (2018)						mm



Jahressumme	823.2	1028.9	937.2	885.3	771.5	1112.8	968.4	723.7	778.4	854.7	1174.9	846.5	mm
-------------	-------	--------	-------	-------	-------	--------	-------	-------	-------	-------	--------	-------	----

Niederschlag

Spitzacker - Schönenwerd

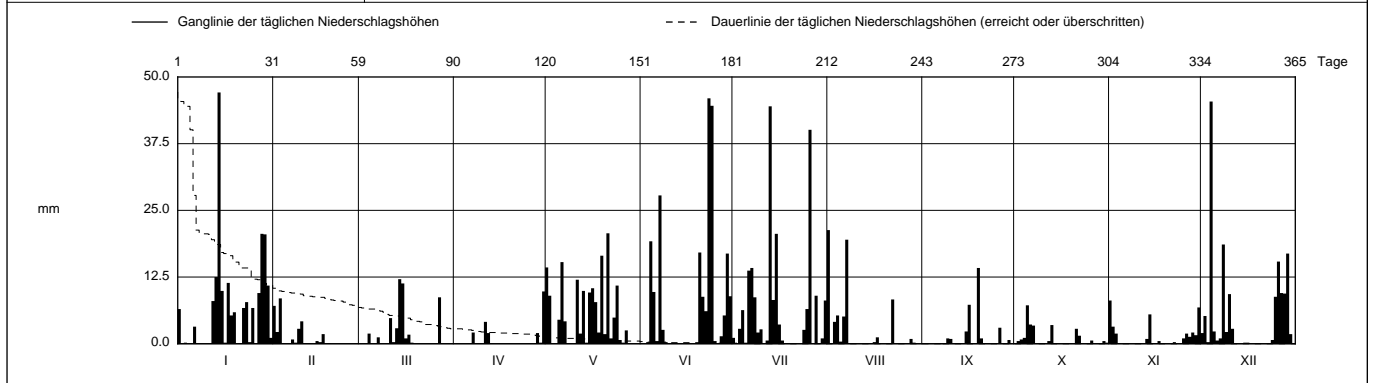
SO 642/246/027

Koordinaten 2 642 380 / 1 246 100

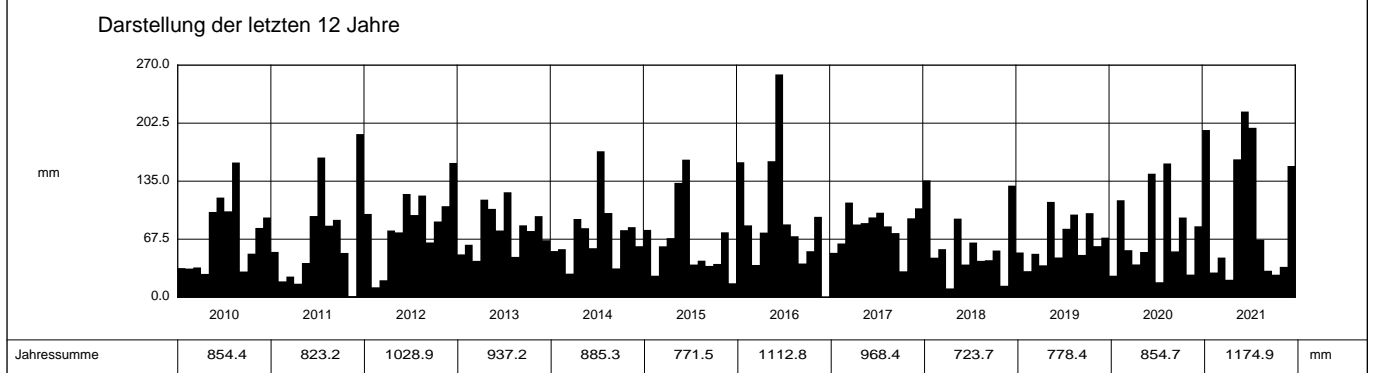
Stations Höhe 394.5 mÜM

Fläche - km2

2021	Jan	Feb	März	April	Mai	Juni	Juli	Aug	Sept	Okt	Nov	Dez		
1	6.5	7.1	0	0	14.3	0	1.1	21.3 +	0	0	8.1 +	2.0	1	
2	0	2.2	0	0	9.0	0	0	0	0	0.5	3.2	5.2	2	
3	0.2	8.5 +	0	0	0	0.3	2.8	4.1	0	0.8	1.9	0.3	3	
4	0	0.1	1.9	0	0	19.2	6.3	5.3	0	1.1	0.1	45.4 +	4	
5	0	0	0	0	4.5	9.7	0	0.4	0	7.2 +	0	2.3	5	
Tägliche Niederschlags-höhen														
6	3.2	0	0	0	15.3	0.5	13.7	5.1	0	3.6	0	0.6	6	
7	0.1	0.8	1.2	2.1	4.2	27.8	14.2	19.5	0	3.4	0	1.0	7	
8	0	0.2	0	0	0	2.6	8.7	0.1	0	0	0	18.6	8	
9	0	2.8	0	0	0	0.3	2.1	0	1.0	0	0	2.2	9	
10	0	4.2	0	0	0	0	2.7	0	0.9	0	0	9.3	10	
11	0	0.1	4.8	4.1	12.0	0	0	0	0	0	0	2.8	11	
12	8.0	0	0.3	2.0	1.9	0	0.6	0	0	0.5	0	0	12	
13	12.5	0	2.9	0.1	9.9	0	44.5 +	0	0	3.5	0.9	0	13	
14	47.1 +	0	12.1 +	0	0.2	0	8.2	0	0.1	0	5.5	0	14	
15	9.9	0.5	11.3	0	9.6	0	20.6	0.1	2.3	0	0	0.2	15	
mm														
16	0.2	0.3	1.0	0	10.4	0	3.6	0.3	7.3	0	0.1	0.2	16	
17	11.4	1.8	1.7	0	7.8	0	0.6	1.2	0	0	0.5	0	17	
18	5.3	0	0.2	0	2.1	0	0.1	0	0	0	0	0	18	
19	5.9	0.1	0	0	16.5	0	0	0	14.2 +	0	0	0	19	
20	0	0	0	0	1.8	17.1	0	0	1.0	0	0	0	20	
21	0.1	0	0	0	20.7 +	8.8	0	0	0.1	2.8	0	0	21	
22	6.7	0	0	0	1.0	6.1	0	8.3	0	1.5	0.3	0	22	
23	7.8	0	0	0	4.9	46.0 +	0	0	0	0	0	0.1	23	
+ Maximum														
24	0.3	0	0	0	10.9	44.6	2.6	0	0	0	0	0.7	24	
25	6.7	0	0	0	0.7	0.5	6.5	0	0.1	0	1.0	8.8	25	
26	0	0	0	0	0.2	0	40.1	0	3.0	0.6	1.9	15.4	26	
27	9.5	0	8.7	0	2.5	1.4	0	0	0	0	1.3	9.5	27	
28	20.6	0	0	2.0	0	5.3	9.0	0.9	0.1	0	2.1	9.4	28	
29	20.5	0	0	0.2	0	16.9	0	0.2	0.7	0	1.6	16.9	29	
30	10.9	0	0	9.8 +	0	8.9	1.0	0	0	0.5	6.8	1.8	30	
31	1.1	0	0	0	0	0	8.1	0	0	0.2	0	0	31	
Monatssumme	194.5	28.7	46.1	20.3 -	160.4	216.0 +	197.1	66.8	30.8	26.2	35.3	152.7	mm	
Niederschlagstage	17	6	9	5 -	19 +	13	18	7	6	7	10	15	Tage	
Niederschlagstage grösser oder gleich als [mm]	187 >= 0.1		74 >= 5			33 >= 10		12 >= 20		>= 50		>= 100		Tage
Jahreswerte	Gesamtniederschlag 1174.9 mm					Niederschlagstage 132 Tage								



Periode	2001 - 2021											(21 Jahre)	
Mit Monatssumme	75.7	50.8 -	66.8	65.9	92.4	94.6	102.2 +	98.3	61.0	72.1	64.4	83.9	mm
Max Tagessumme	47.1	32.2 -	34.5	43.4	50.7	51.7	82.4 +	68.4	49.5	47.1	53.5	45.4	mm
Jahr	2021	2006	2006	2008	2016	2015	2013	2007	2008	2006	2015	2021	
Periode	Max Gesamtniederschlag 1248.7 (2001)					Min Gesamtniederschlag 723.7 (2018)							mm



Jahressumme	2010	2011	2012	2013	2014	2015	2016	2017	2018	2019	2020	2021	mm
	854.4	823.2	1028.9	937.2	885.3	771.5	1112.8	968.4	723.7	778.4	854.7	1174.9	mm

Niederschlag

Spitzacker - Schönenwerd

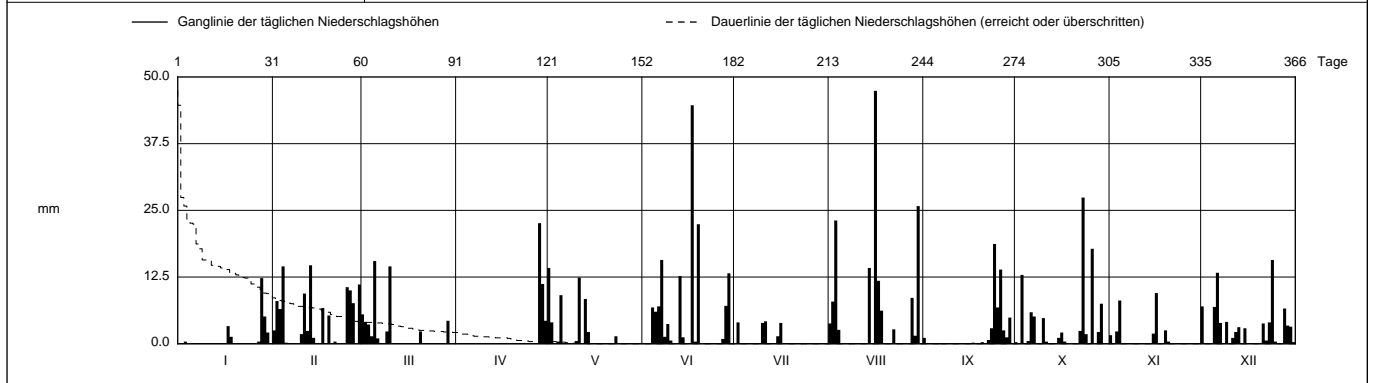
SO 642/246/027

Koordinaten 2 642 380 / 1 246 100

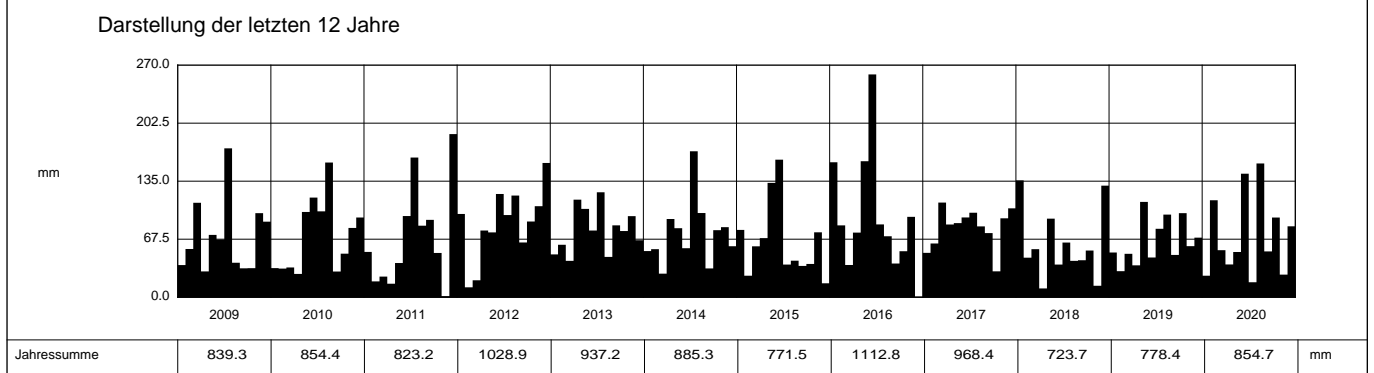
Stations Höhe 394.5 mÜM

Fläche - km2

2020	Jan	Feb	März	April	Mai	Juni	Juli	Aug	Sept	Okt	Nov	Dez		
1	0	2.5	5.5	0	14.2 +	0	0	3.8	1.1	0.3	1.6	7.0	1	
2	0	8.0	4.1	0	4.0	0	4.0	7.9	0	0	0	0	2	
3	0.4	6.5	3.6	0	0	0	0	23.1	0	12.9	2.3	0	3	
4	0	14.5	1.4	0	0.4	6.8	0	2.6	0	0.1	8.1	0	4	
5	0	0.2	15.5 +	0	9.1	6.0	0	0	0	0.5	0	6.9	5	
Tägliche Niederschlags-höhen														
6	0	0	1.0	0	0	7.0	0	0	0	5.9	0	13.3	6	
7	0.1	0	0.1	0	0	15.7	0	0	0	5.1	0	3.9	7	
8	0	0	0	0	0	1.3	0	0	0	0	0	0	8	
9	0	0	2.3	0	0	3.7	0	0	0	0	0	4.1	9	
10	0	1.8	14.5	0	0.5	0.6	3.9	0	0	4.8	0	0	10	
11	0	9.4	0	0	12.4	0	4.2 +	0	0	0.4	0	1.1	11	
12	0	2.4	0	0	0	0	0	0	0	0	0	2.2	12	
13	0	14.7 +	0	0	8.4	12.7	0	0	0	0	0	3.1	13	
14	0	1.1	0	0	2.2	1.2	0	14.2	0	0	0	0	14	
15	0	0	0	0	0	0	1.4	0	0	1.1	1.9	2.9	15	
mm														
16	0	0	0	0	0	0	3.9	47.4 +	0	2.1	9.5 +	0	16	
17	3.3	6.7	0	0	0	44.7 +	0	11.8	0.2	0.4	0	0	17	
18	1.3	0	0	0	0	0.4	0	6.2	0	0	0	0	18	
19	0	5.3	0	0	0	22.4	0	0	0	0	2.5	0	19	
20	0	0	2.3	0	0	0	0	0	0.3	0	0.4	0	20	
21	0	0.4	0	0	0	0	0	0	0.1	0	0	3.8	21	
22	0	0	0	0	0	0	0	2.7	0.7	2.4	0	0.6	22	
23	0	0	0	0	1.4	0	0	0	2.9	27.4 +	0	4.0	23	
+ Maximum														
24	0	0	0	0	0	0	0	0	18.7 +	1.8	0	15.7 +	24	
25	0	10.6	0	0	0	0	0	0	6.8	0	0	0.4	25	
26	0	10.0	0	0	0	0	0	0	13.9	17.8	0	0	26	
27	0.4	7.6	0	0	0	0.9	0	0	2.5	0	0	0	27	
28	12.3 +	0	0	22.6 +	0	7.1	0	8.6	1.2	2.2	0	6.6	28	
29	5.1	11.1	4.3	11.2	0	13.2	0	1.5	4.9	7.5	0	3.4	29	
30	2.1	0	0.1	4.3	0	0	0	25.8	0	0	0	3.2	30	
31	0	0	0	0	0	0	0	0	0	0	0	0.3	31	
Monatssumme	25.0	112.8	54.7	38.1	52.6	143.7	17.4 -	155.6 +	53.3	92.7	26.3	82.5	mm	
Niederschlagstage	5	15 +	10	3 -	7	12	5	12	8	12	6	15 +	Tag	
Niederschlagstage grösser oder gleich als [mm]	135 >= 0.1		55 >= 5			29 >= 10		7 >= 20		>= 50		>= 100		Tag
Jahreswerte	Gesamtniederschlag 854.7 mm					Niederschlagstage 110 Tage								



Periode	2001 - 2020												(20 Jahre)
Mit Monatssumme	69.8	51.9 -	67.8	68.2	89.0	88.5	97.4	99.9 +	62.5	74.4	65.9	80.4	mm
Max Tagessumme	34.1	32.2 -	34.5	43.4	50.7	51.7	82.4 +	68.4	49.5	47.1	53.5	32.9	mm
Jahr	2004	2006	2006	2008	2016	2015	2013	2007	2008	2006	2015	2011	
Periode	Max Gesamtniederschlag 1248.7 (2001)						Min Gesamtniederschlag 723.7 (2018)						mm



Jahressumme	839.3	854.4	823.2	1028.9	937.2	885.3	771.5	1112.8	968.4	723.7	778.4	854.7	mm
--------------------	--------------	--------------	--------------	---------------	--------------	--------------	--------------	---------------	--------------	--------------	--------------	--------------	-----------

Niederschlag

Spitzacker - Schönenwerd

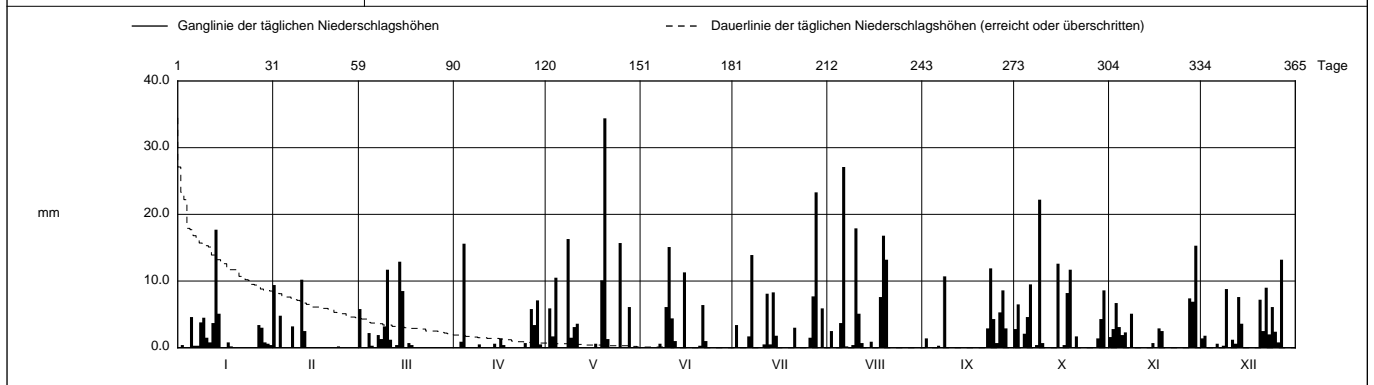
SO 642/246/027

Koordinaten 2 642 380 / 1 246 100

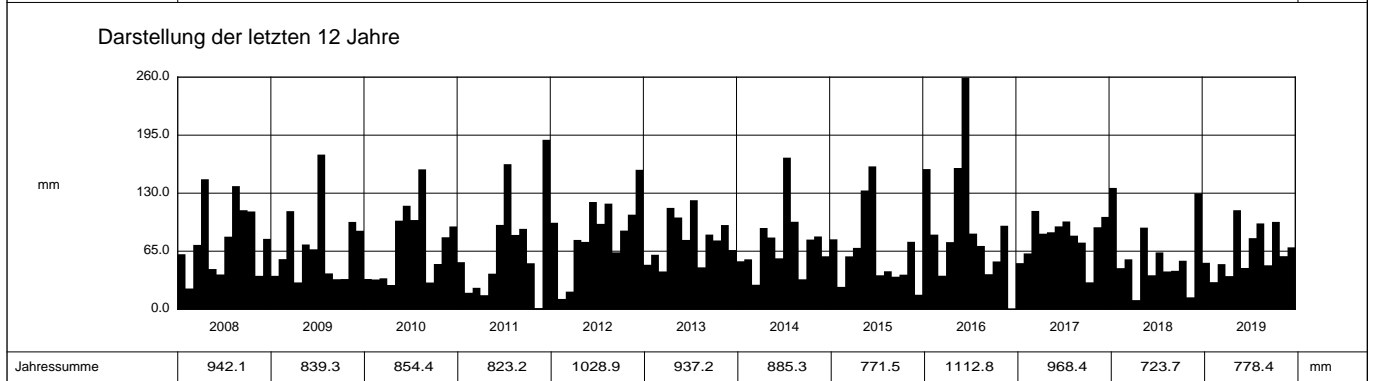
Stations Höhe 394.5 müM

Fläche - km2

2019		Jan	Feb	März	April	Mai	Juni	Juli	Aug	Sept	Okt	Nov	Dez		
1		0	9.4	5.8	0	0	0	0	0	0	2.8	1.6	1.4	1	
2		0.4	0	0	0	5.9	0	3.4	2.5	1.4	6.5	2.8	1.8	2	
3		0	4.8	0	0.9	1.7	0	0	0	0	0	6.7	0	3	
4		0	0	2.2	15.6 +	10.5	0	0	0	0	2.1	3.1	0	4	
5		4.6	0	0.3	0	0	0	0	3.7	0	4.6	1.9	0	5	
6	Tägliche Niederschlags-höhen	0.3	0	0	0	0	0	1.7	27.1 +	0.3	9.5	2.3	0.6	6	
7		0.3	3.2	1.9	0	0	0.6	13.9	0.2	0.1	0	0.1	0.1	7	
8		3.8	0	1.3	0	16.3	0	0	0	10.7	0.4	5.1	0.3	8	
9		4.5	0	3.2	0.5	1.5	6.1	0	0.4	0	22.2 +	0	8.8	9	
10		1.5	10.2 +	11.7	0.1	3.1	15.1 +	0	17.9	0	0.7	0	0	10	
11		0.8	2.5	1.2	0	3.6	4.4	0.5	5.1	0	0	0.1	1.2	11	
12		3.7	0	0	0	0	1.0	8.1	0.7	0	0	0	0.6	12	
13		17.7 +	0	0.4	0	0	0	0.5	0	0	0	0	0	7.6	13
14		5.1	0	12.9 +	0.6	0	0	8.3	0	0	0	0	0	3.6	14
15		0	0	8.5	0	0	11.3	1.8	0.9	0	12.6	0.7	0	0	15
16	mm	0	0	0	1.4	0	0	0	0	0	0	0	0	16	
17		0.8	0	0.7	0.4	0.6	0	0	0	0	0.4	2.9	0.1	17	
18		0.2	0	0.4	0	0	0	0	7.6	0	8.2	2.5	0	18	
19		0	0	0	0	10.1	0	0	16.8	0	11.7	0	0	19	
20		0	0	0	0	34.4 +	0.3	0	13.2	0	0	0	7.2	20	
21	0	0	0	0	1.3	6.4	3.0	0	0	1.7	0	2.5	21		
22	0	0.2	0	0	0	1.0	0	0	0	2.9	0	9.0	22		
23	0	0	0	0	0	0	0	0	11.9 +	0	0	2.0	23		
24	+ Maximum	0	0	0	0.7	0	0	0	4.3	0.1	0	6.1	24		
25		0	0	0	0	15.7	0	0	0	0.7	0	0	2.4	25	
26	0.1	0	0	5.8	0	0	1.5	0	5.3	0	0	0.8	26		
27	3.4	0	0	3.4	0	0	7.7	0	8.6	0	7.4	13.2 +	27		
28	3.0	0	0	7.1	6.1	0	23.3 +	0	2.9	1.4	6.9	0	28		
29	0.8	0	0	0.5	0.1	0	0	0	0	4.3	15.3 +	0	29		
30	0.6	0	0	0.1	0	0	5.9	0	0.1	8.6	0	0	30		
31	0.4	0	0	0	0	0	0	0	0	0	0	0	31		
Monatssumme		52.0	30.3 -	50.5	37.1	110.9 +	46.2	79.6	96.1	49.2	97.8	59.4	69.3	mm	
Niederschlagstage		9	5 -	9	5 -	12	7	11	8	8	13 +	12	13 +	Tage	
Niederschlagstage grösser oder gleich als [mm]		162 >= 0.1		56 >= 5			25 >= 10		4 >= 20		>= 50		>= 100		Tage
Jahreswerte		Gesamtniederschlag 778.4 mm					Niederschlagstage 112 Tage								



Periode	2001 - 2019 (19 Jahre)												
Mit Monatssumme	72.1	48.7 -	68.5	69.8	91.0	85.6	101.6 +	97.0	63.0	73.4	68.0	80.3	mm
Max Tagessumme Jahr	34.1 2004	32.2 - 2006	34.5 2006	43.4 2008	50.7 2016	51.7 2015	82.4 + 2013	68.4 2007	49.5 2008	47.1 2006	53.5 2015	32.9 2011	mm
Periode	Max Gesamtniederschlag 1248.7 (2001)						Min Gesamtniederschlag 723.7 (2018)						mm



Jahressumme	942.1	839.3	854.4	823.2	1028.9	937.2	885.3	771.5	1112.8	968.4	723.7	778.4	mm
-------------	-------	-------	-------	-------	--------	-------	-------	-------	--------	-------	-------	-------	----

Niederschlag

Spitzacker - Schönenwerd

SO 642/246/027

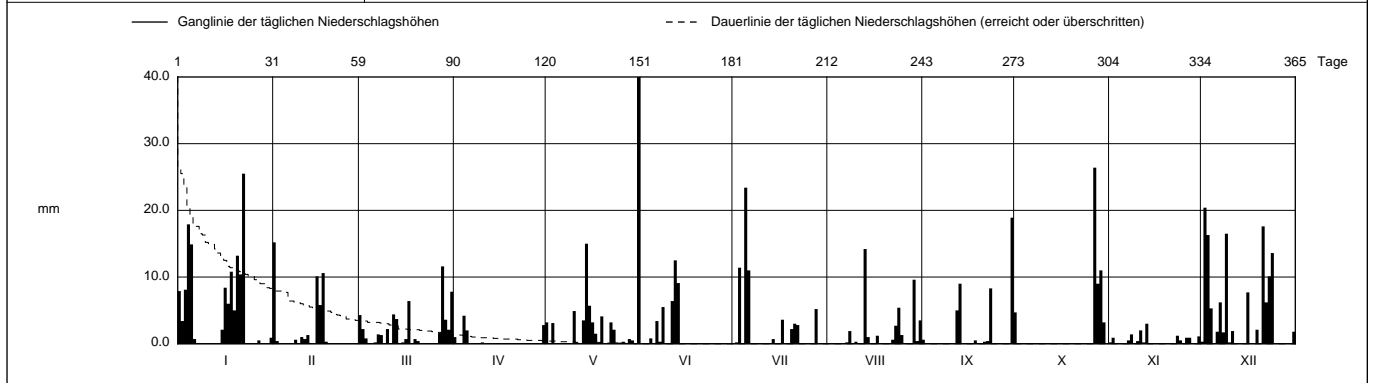
Koordinaten 2 642 380 / 1 246 100

Stations Höhe 394.5 müM

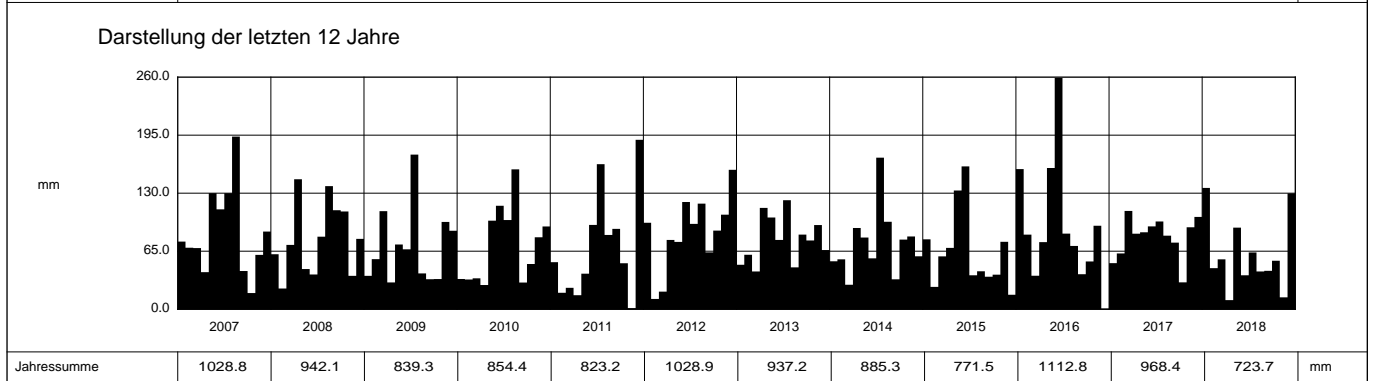
Fläche - km2

2018		Jan	Feb	März	April	Mai	Juni	Juli	Aug	Sept	Okt	Nov	Dez	
1		7.9	15.2 +	4.3	1.0	3.2	0	0	0	0.6	4.7	0.2	0.3	1
2		3.4	0.4	2.2	0	0	0	0.2	0	0	0	0.9	20.4 +	2
3		8.1	0	0.8	0	3.1	0	11.4	0	0	0	0	16.3	3
4		17.9	0	0	4.2 +	0	0.8	0	0	0	0	0	5.3	4
5		14.9	0	0	2.0	0	0	23.4 +	0	0	0	0	0	5
Tägliche Niederschlags-höhen														
6		0.7	0	0.2	0	0	3.4	11.0	0	0	0	0	1.8	6
7		0	0	1.4	0	0	0.3	0	0.2	0	0	0.5	6.2	7
8		0	0.6	1.3	0	0.1	5.5	0	1.9	0	0	1.4	1.7	8
9		0	0	0	0	0	0	0	0	0	0	0	16.5	9
10		0	1.0	2.2	0.2	4.9	0	0	0.3	0	0	0.4	0.2	10
11		0.1	0.7	0.1	0	0	6.4	0	0	0	0	2.0	1.9	11
12		0	1.3	4.4	0	0.1	12.5 +	0	0	5.0	0	0.2	0	12
13		0	0	3.7	0	3.5	9.1	0	14.2 +	9.0	0	3.0 +	0	13
14		0	0	0	0	15.0	0	0.7	1.0	0	0	0	0	14
15		2.1	10.1	0.2	0	5.7	0	0	0	0	0	0	0	15
mm														
16		8.4	5.8	0.7	0	3.2	0	0	0	0	0	0	7.7	16
17		6.0	10.6	6.4	0	1.5	0	3.6	1.2	0	0	0	0.1	17
18		10.8	0.3	0.1	0	0	0	0	0	0.5	0	0	0	18
19		5.0	0	0.7	0	4.1	0	0	0	0	0	0.1	2.1	19
20		13.2	0	0.4	0	0	0	2.2	0	0	0	0	0	20
21		10.4	0	0	0	0	0	3.0	0	0.3	0	0	17.6	21
22		25.5 +	0	0.1	0	3.2	0	2.8	0.6	0.4	0	0	6.2	22
23		0	0	0	0	2.1	0	0	2.7	8.3	0	1.2	10.1	23
+ Maximum														
24		0	0	0	0	0.2	0	0	5.4	0	0	0.5	13.6	24
25		0	0	0	0	0	0	0	1.3	0	0	0	0	25
26		0.1	0	0	0	0.3	0	0	0	0	0	0.9	0	26
27		0.5	0	1.6	0	0	0	0	0	0	26.4 +	0.9	0	27
28		0	0	11.6 +	0	0.7	0	5.2	0	9.0	0	0	0	28
29		0	0	3.6	0	0.5	0	0	9.6	0	11.0	0	0	29
30		0	0	2.1	2.8	0	0	0.1	0.4	18.9 +	3.2	1.1	0	30
31		0.9	0	7.8	0	40.0 +	0	0	3.5	0	0	0	1.8	31

Monatssumme	135.9 +	46.0	55.9	10.2 -	91.4	38.0	63.6	42.3	43.0	54.3	13.3	129.8	mm	
Niederschlagstage	13	6	13	4 -	12	5	8	9	4 -	5	5	15 +	Tage	
Niederschlagstage grösser oder gleich als [mm]	149 >= 0.1		49 >= 5			26 >= 10		5 >= 20		>= 50		>= 100		Tage
Jahreswerte	Gesamtniederschlag 723.7 mm						Niederschlagstage 99 Tage							



Periode	2001 - 2018 (18 Jahre)												
Mit Monatssumme	73.3	49.7 -	69.5	71.6	89.8	87.8	102.9 +	97.0	63.8	72.1	68.5	80.9	mm
Max Tagessumme Jahr	34.1 2004	32.2 - 2006	34.5 2006	43.4 2008	50.7 2016	51.7 2015	82.4 + 2013	68.4 2007	49.5 2008	47.1 2006	53.5 2015	32.9 2011	mm
Periode	Max Gesamtniederschlag 1248.7 (2001)						Min Gesamtniederschlag 723.7 (2018)						mm



Jahressumme	1028.8	942.1	839.3	854.4	823.2	1028.9	937.2	885.3	771.5	1112.8	968.4	723.7	mm
-------------	--------	-------	-------	-------	-------	--------	-------	-------	-------	--------	-------	-------	----

Niederschlag

Spitzacker - Schönenwerd

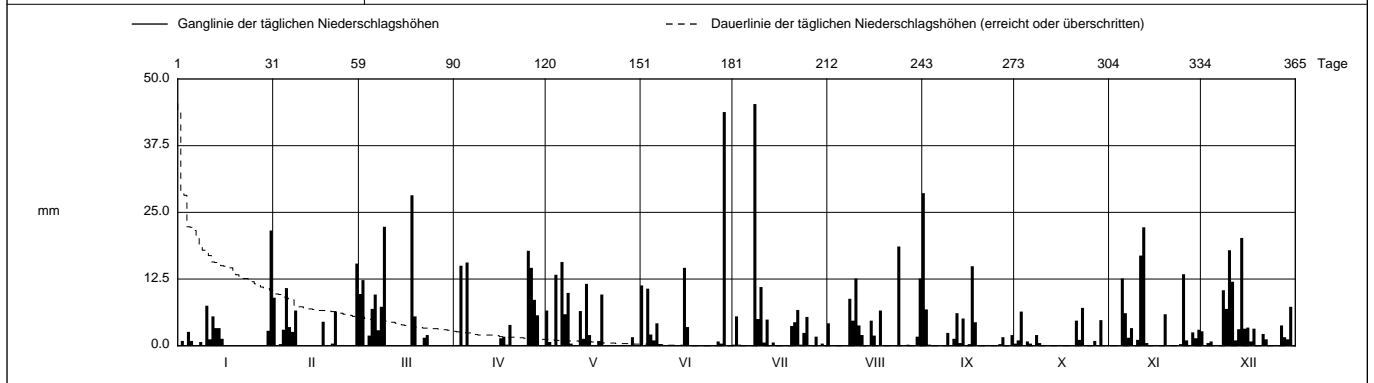
SO 642/246/027

Koordinaten 2 642 380 / 1 246 100

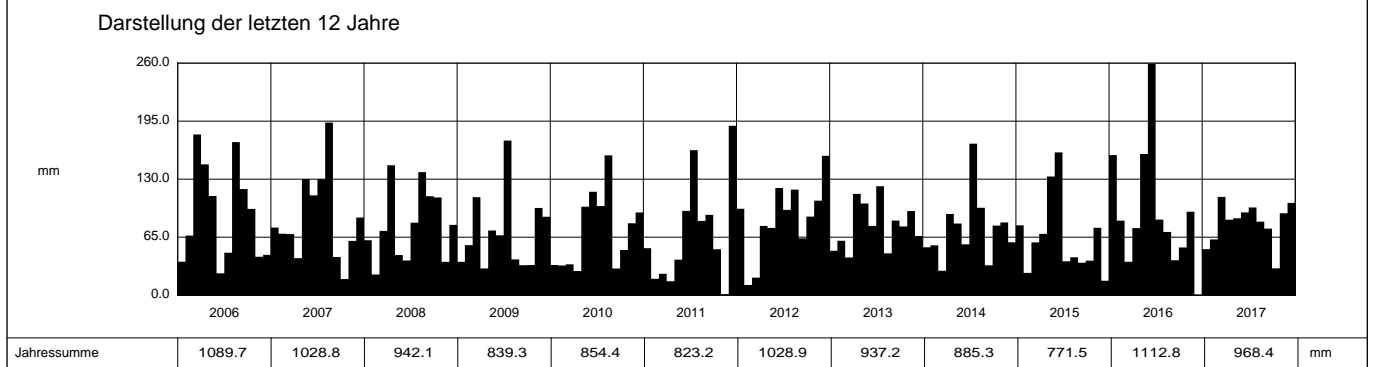
Stations Höhe 394.5 müM

Fläche - km2

2017	Jan	Feb	März	April	Mai	Juni	Juli	Aug	Sept	Okt	Nov	Dez		
1	0	9.0	9.7	0	6.6	11.3	0.2	4.2	28.6 +	0.4	0	2.7	1	
2	0.9	0	12.3	0	0.7	0	5.5	0	6.8	1.0	0	0	2	
3	0	0.3	0	15.0	0.1	10.7	0.2	0	0.2	6.4	0	0.5	3	
4	2.6	3.0	1.9	0.1	13.3	2.1	0	0	0	0	0	0.8	4	
5	0.9	10.8	6.9	15.6	0	1.0	0	0	0	0.8	12.6	0	5	
Tägliche Niederschlags-höhen														
6	0	3.5	9.6	0	15.7 +	4.2	0	0	0	0.4	6.1	0	6	
7	0	2.6	2.9	0	5.9	0.3	0	0	0	1.5	0	0	7	
8	0.7	6.6	7.3	0	9.9	0	45.3 +	8.8	0	2.0	3.3	10.4	8	
9	0	0	22.3	0	0.4	0	5.0	4.7	2.4	0.5	0	6.9	9	
10	7.5	0	0	0	0	0	11.0	12.6	0	0	1.1	17.9	10	
11	1.2	0	0	0	0	0	0.6	3.8	1.3	0	16.9	12.0	11	
12	5.5	0	0	0	6.5	0	4.9	2.0	6.1	0	22.2 +	1.0	12	
13	3.3	0	0	0	1.3	0	0	0	0.5	0	0.5	3.1	13	
14	3.3	0	0	0	11.6	0	0.6	0	5.1	0	0	20.2 +	14	
15	1.3	0	0	0	2.0	14.6	0	4.7	0	0	0	3.2	15	
mm														
16	0	0	0	1.4	0	3.5	0	1.9	0.3	0	0	3.4	16	
17	0	4.5	0	1.7	0	0	0	0	14.9	0	0	0.8	17	
18	0	0	28.2 +	0.2	0.9	0	0	6.6	4.4	0	0	3.2	18	
19	0	0	5.5	3.9	9.6	0	0	0	0.1	0	5.9	0	19	
20	0	0.4	0	0	0	0	3.7	0	0	0	0	0	20	
21	0	6.4	0	0	0	0	4.4	0	0	4.7	0.1	2.2	21	
22	0	0	1.5	0	0	0	6.7	0	0	1.1	0	1.2	22	
23	0	0	2.0	0	0	0	0.2	0	0	7.1 +	0	0	23	
+ Maximum														
24	0	0	0	0	0	0	2.4	18.6 +	0	0	0.3	0	24	
25	0	0	0	17.8 +	0	0.1	5.4	0	0	0	13.4	0	25	
26	0	0	0	14.6	0	0.8	0	0	0.3	0	1.0	0	26	
27	0	0	0	8.6	0	0.4	0.1	0.2	1.6	0.9	0	3.8	27	
28	0	15.4 +	0	5.7	0	43.8 +	1.7	0	0	0	2.5	1.6	28	
29	0	0	0	0	1.6	0	0	0	0	4.8	1.4	1.2	29	
30	2.8	0	0	0	0.1	0	0.4	1.7	2.0	0	3.0	7.3	30	
31	21.6 +	0	0	0	0	0	0	12.6	0	0	0	0	31	
Monatssumme	51.6	62.5	110.1 +	84.6	86.2	92.8	98.3	82.4	74.6	30.1 -	91.8	103.4	mm	
Niederschlagstage	9	9	12	9	11	8	11	12	10	7 -	13	17 +	Tage	
Niederschlagstage grösser oder gleich als [mm]	168 >= 0.1		64 >= 5			32 >= 10		8 >= 20		>= 50		>= 100		Tage
Jahreswerte	Gesamtniederschlag 968.4 mm					Niederschlagstage 128 Tage								



Periode	2001 - 2017 (17 Jahre)												
Mit Monatssumme	69.6	50.0 -	70.3	75.2	89.8	90.7	105.2 +	100.2	65.0	73.1	71.7	78.1	mm
Max Tagessumme Jahr	34.1 2004	32.2 - 2006	34.5 2006	43.4 2008	50.7 2016	51.7 2015	82.4 + 2013	68.4 2007	49.5 2008	47.1 2006	53.5 2015	32.9 2011	mm
Periode	Max Gesamtniederschlag 1248.7 (2001)					Min Gesamtniederschlag 725.5 (2003)							mm



Jahressumme	1089.7	1028.8	942.1	839.3	854.4	823.2	1028.9	937.2	885.3	771.5	1112.8	968.4	mm
--------------------	---------------	---------------	--------------	--------------	--------------	--------------	---------------	--------------	--------------	--------------	---------------	--------------	-----------

Niederschlag

Spitzacker - Schönenwerd

SO 642/246/027

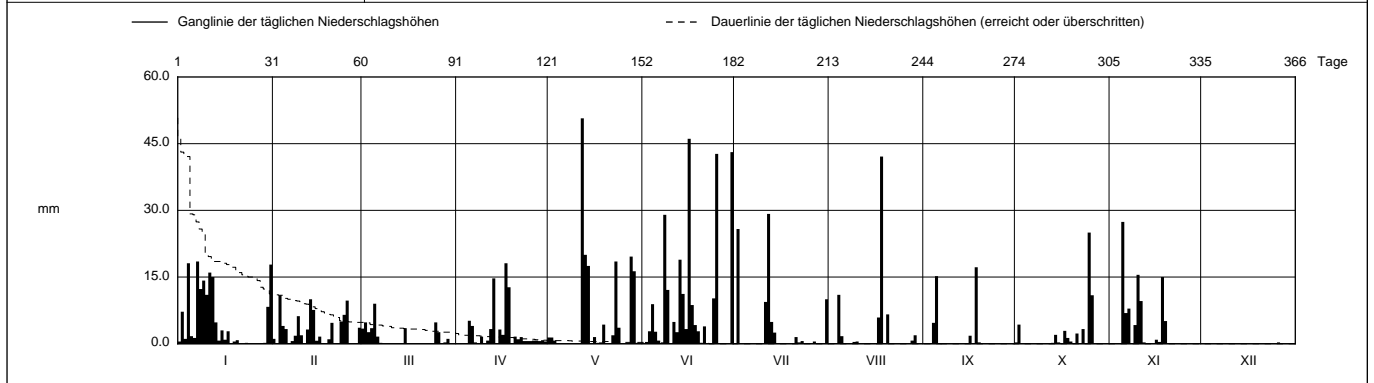
Koordinaten 2 642 380 / 1 246 100

Stations Höhe 394.5 müM

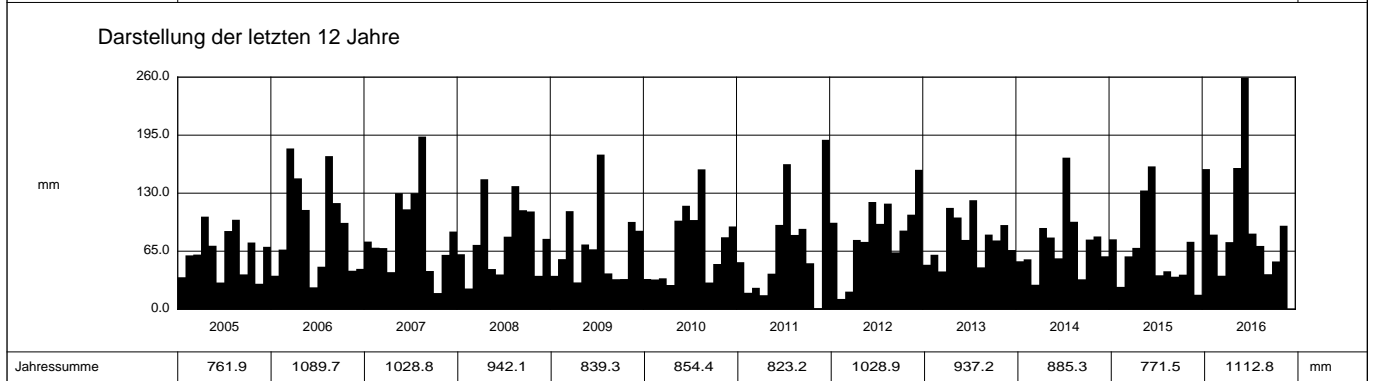
Fläche - km2

2016	Jan	Feb	März	April	Mai	Juni	Juli	Aug	Sept	Okt	Nov	Dez	
1	0.5	1.1	3.4	0	1.4	0	0	0	0	0.3	0	0	1
2	7.2	0	4.8	0	1.4	0.4	25.8	0.1	0	4.3	0	0	2
3	1.1	10.9 +	2.6	0	0.7	2.8	0	0	0	0	0.1	0	3
4	18.1	4.0	3.5	0	0.1	8.9	0	11.0	4.7	0	0.1	0	4
5	1.7	3.3	9.0 +	5.2	0	2.7	0	1.7	15.2	0	27.4 +	0	5
6	1.3	0	1.6	4.0	0	0.7	0	0	0	0	6.9	0	6
7	18.5 +	0.6	0.2	0.3	0	0	0	0	0	0	7.9	0	7
8	12.3	1.8	0	0.1	0	29.0	0	0	0	0	0.1	0	8
9	14.2	6.2	0	1.6	0	12.1	0	0.4	0	0	4.2	0.1	9
10	11.0	1.9	0	0	0	0	0	0.5	0	0	15.5	0	10
11	16.0	0	0	0.7	0	4.9	9.4	0	0	0.1	9.6	0	11
12	15.0	3.2	0	3.3	50.7 +	2.6	29.2 +	0	0	0	0.3	0	12
13	4.8	10.0	0	14.7	20.0	18.9	4.9	0	0	0.2	0	0	13
14	0.7	7.6	0	0	17.5	11.2	2.5	0	0	2.0	0	0	14
15	3.0	0.7	3.5	3.2	0	3.3	0	0	0	0.3	0	0	15
16	0.9	1.6	0	2.0	1.5	46.1 +	0	0	1.8	0	0.9	0	16
17	2.8	0.1	0	18.1 +	0.2	8.7	0	5.9	0	2.9	0.4	0	17
18	0	0	0	12.7	0.3	4.2	0	42.1 +	17.2 +	1.3	15.0	0	18
19	0.5	1.0	0	0.1	4.3	2.8	0	0	0.3	0.5	5.1	0	19
20	0.8	4.7	0	1.6	0	0	0	6.6	0	0	0	0	20
21	0	0	0	1.0	0	3.9	1.5	0	0	2.3	0	0	21
22	0	0.1	0	1.5	1.9	0	0.3	0	0	0	0	0	22
23	0.2	5.0	0	0.6	18.5	0	0.6	0	0	3.3	0	0	23
24	0	6.5	0	0.6	3.6	10.2	0	0	0	0.1	0	0	24
25	0	9.7	4.8	0.6	0	42.7	0	0	0	25.0 +	0	0	25
26	0	0	2.6	0.7	0	0	0	0	0	10.9	0	0.3 +	26
27	0	0	0.1	0.7	0	0	0.5	0	0	0	0	0	27
28	0.1	0	0.3	0.6	19.6	0	0	0.7	0	0	0	0	28
29	0.2	3.6	1.1	0.8	16.3	0	0	1.9	0	0	0	0	29
30	8.3	0	0	0.5	0.2	43.1	0	0	0	0	0	0	30
31	17.8	0	0	0	0	0	10.0	0	0	0	0	0	31

Monatssumme	157.0	83.6	37.5	75.2	158.2	259.2 +	84.7	70.9	39.2	53.5	93.5	0.4 -	mm
Niederschlagstage	16	17	10	12	12	18 +	7	6	4	8	8	0 -	Tage
Niederschlagstage grösser oder gleich als [mm]			174 >= 0.1	57 >= 5		39 >= 10		11 >= 20		1 >= 50		>= 100	
Jahreswerte	Gesamtniederschlag 1112.8 mm					Niederschlagstage 118 Tage							



Periode	2001 - 2016											(16 Jahre)	
Mit Monatssumme	70.7	49.2 -	67.8	74.6	90.0	90.6	105.6 +	101.4	64.4	75.8	70.4	76.5	mm
Max Tagessumme	34.1	32.2 -	34.5	43.4	50.7	51.7	82.4 +	68.4	49.5	47.1	53.5	32.9	mm
Jahr	2004	2006	2006	2008	2016	2015	2013	2007	2008	2006	2015	2011	
Periode	Max Gesamtniederschlag 1248.7 (2001)					Min Gesamtniederschlag 725.5 (2003)							mm



Jahressumme	761.9	1089.7	1028.8	942.1	839.3	854.4	823.2	1028.9	937.2	885.3	771.5	1112.8	mm
-------------	-------	--------	--------	-------	-------	-------	-------	--------	-------	-------	-------	--------	----

Niederschlag

Spitzacker - Schönenwerd

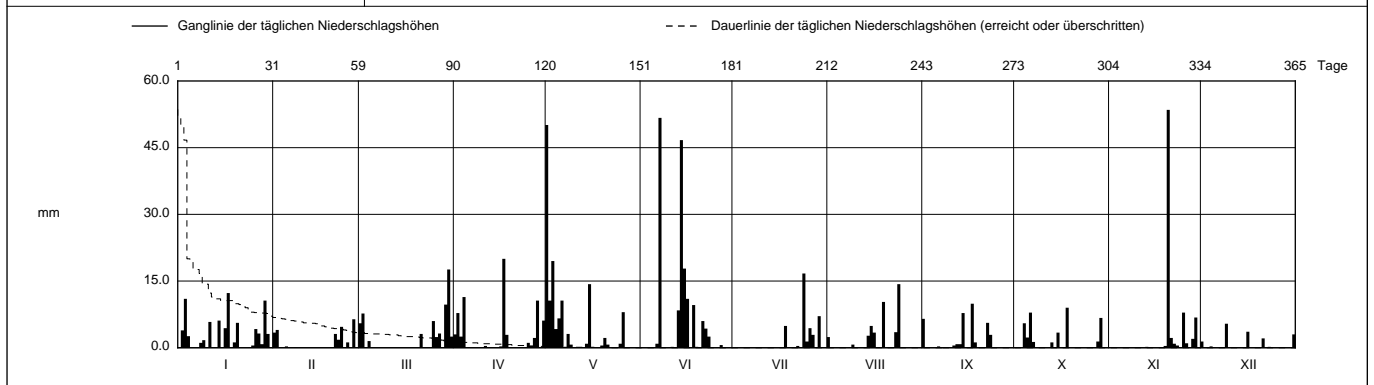
SO 642/246/027

Koordinaten 642 380 / 246 100

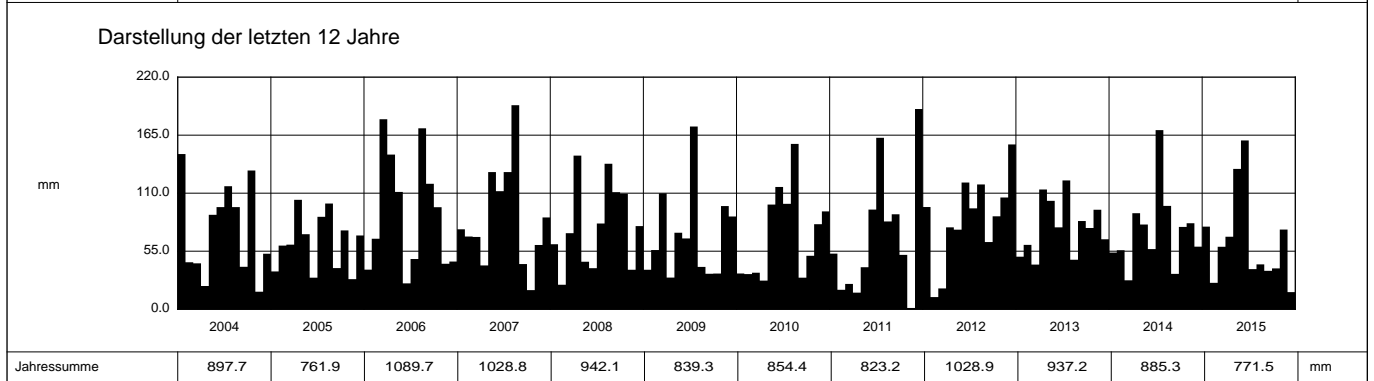
Stations Höhe 394.5 müM

Fläche - km2

2015		Jan	Feb	März	April	Mai	Juni	Juli	Aug	Sept	Okt	Nov	Dez		
1		0	3.4	5.5	3.0	50.1 +	0	0	2.4	6.5	0	0	1.4	1	
2		3.9	4.0	7.7	7.8	10.6	0	0	0	0	0	0	0	2	
3		11.0	0	0	2.5	19.5	0	0	0	0	0	0	0	3	
4		2.6	0	1.5	11.4	4.2	0	0	0.1	0	5.5	0	0.3	4	
5		0	0.3	0	0	6.6	0	0	0	0	2.3	0	0.1	5	
6	Tägliche Niederschlags-höhen	0	0	0	0	10.6	0.9	0	0	0.3	7.9	0	0	6	
7		0	0	0	0	0	51.7 +	0	0	0	1.3	0.1	0	7	
8		1.1	0.1	0	0	3.1	0	0	0.1	0	0	0	0	8	
9		1.7	0	0	0	0.7	0	0	0.7	0	0	0	0	5.4 +	9
10		0	0	0	0	0	0	0	0.1	0	0	0	0	0	10
11		5.8	0	0	0.4	0	0.2	0	0	0	0.5	0	0	0	11
12		0	0	0	0	0	0	0	0	0.8	0	0	0	0	12
13		0	0	0	0	0	8.4	0	0	0.8	1.2	0.2	0.1	0	13
14		6.1	0	0	0	0.9	46.7	0	2.7	7.8	0	0	0	0	14
15		0	0	0	0	14.3	17.8	0	4.9	0	3.4	0	0	0	15
16	mm	4.4	0	0	0.3	0	11.0	0	3.4	0.1	0	0	3.6	16	
17		12.3 +	0	0	20.0 +	0	0	0	0	9.9 +	0	0	0	17	
18		0	0	0	0	0	9.6	4.9	0	1.2	9.0 +	0	0	18	
19		1.2	0	0	0	0.5	0.2	0.1	10.3	0	0	0	0.4	19	
20		5.6	0	0	0	2.2	0	0	0	0	0	53.5 +	0	20	
21	+ Maximum	0	3.1	3.1	0	0.7	6.0	0	0	0	0	2.2	2.1	21	
22		0	1.8	0	0	0	4.3	0.4	0	5.6	0	0.9	0	22	
23		0	4.7	0	0	0	2.5	0.1	3.5	2.9	0	0.5	0.2	23	
24		0.1	0	0	0	0	0	16.7 +	14.3 +	0	0	0	0	24	
25		0.5	1.2	6.0	1.1	0.9	0	1.4	0	0	0	7.9	0	25	
26		4.2	0	2.4	0.4	8.0	0.1	4.4	0	0	0	1.0	0	26	
27		3.2	6.4 +	3.2	2.2	0.1	0.6	2.9	0	0	0	0	0	27	
28		0.8	0	0	10.6	0	0	0	0	0	1.4	2.0	0	28	
29		10.6	0	9.7	0	0	0	7.1	0	0	6.7	6.8	0	29	
30		3.1	0	17.6 +	6.1	0	0	0	0	0	0	0	0	30	
31	0.1	0	2.5	0	0	0	0	0	0	0	0	3.0	31		
Monatssumme		78.3	25.0	59.2	68.7	133.0	160.0 +	38.0	42.5	36.4	38.7	75.5	16.2 -	mm	
Niederschlagstage		15 +	7	10	10	10	9	6	7	6	9	6	5 -	Tage	
Niederschlagstage grösser oder gleich als [mm]				141 >= 0.1	47 >= 5	20 >= 10	5 >= 20	3 >= 50						Tage	
Jahreswerte		Gesamtniederschlag 771.5 mm					Niederschlagstage 100 Tage								



Periode	2001 - 2015 (15 Jahre)												
Mit Monatssumme	64.9	46.9 -	69.9	74.6	85.4	79.4	107.0 +	103.4	66.1	77.3	68.9	81.6	mm
Max Tagessumme Jahr	34.1 2004	32.2 - 2006	34.5 2006	43.4 2008	50.1 2015	51.7 2015	82.4 + 2013	68.4 2007	49.5 2008	47.1 2006	53.5 2015	32.9 2011	mm
Periode	Max Gesamtniederschlag 1248.7 (2001)					Min Gesamtniederschlag 725.5 (2003)							mm



Jahressumme	897.7	761.9	1089.7	1028.8	942.1	839.3	854.4	823.2	1028.9	937.2	885.3	771.5	mm
-------------	-------	-------	--------	--------	-------	-------	-------	-------	--------	-------	-------	-------	----

Niederschlag

Spitzacker - Schönenwerd

SO 642/246/027

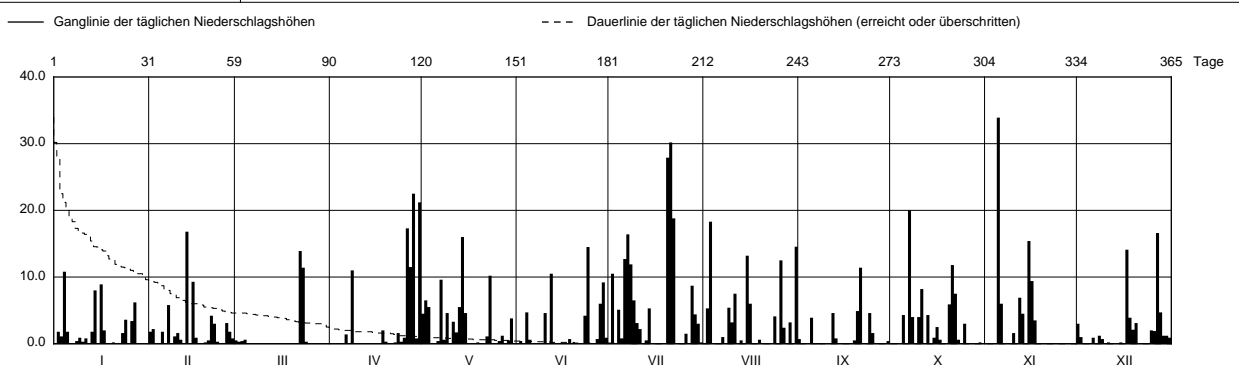
Koordinaten 642 380 / 246 100

Stations Höhe 394.5 mÜM

Fläche - km2

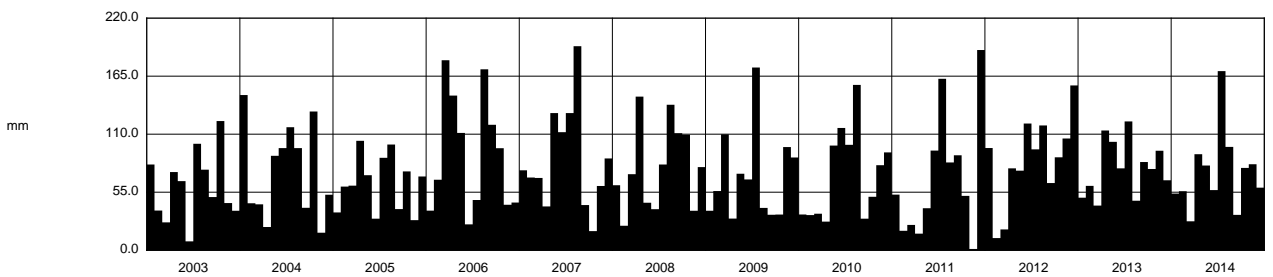
2014		Jan	Feb	März	April	Mai	Juni	Juli	Aug	Sept	Okt	Nov	Dez			
1		0.1	1.8	0.5	0	4.5	0	0	0	0.7	0.1	0	3.0	1		
2		1.8	2.2	0.3	0	6.5	0.4	10.5	5.3	0	0	0	1.0	2		
3		1.1	0	0.4	0	5.5	0	0	18.3 +	0	0	0	0	3		
4		10.8 +	0	0.6	0	0	4.7	5.1	0	0	0	0	0	4		
5		1.8	1.8	0	0	0	0.6	0.8	0	3.9	4.3	33.9 +	0.1	5		
6	Tägliche Niederschlags-höhen	0	0	0	1.4	0.4	0	12.7	0	0	0	6.0	0.9	6		
7		0	5.8	0	0	9.6	0	16.4	1.0	0	20.0 +	0	0	7		
8		0.4	0.1	0	11.0	0.6	0	11.9	0	0	4.0	0	1.2	8		
9		0.9	1.1	0	0	4.6	0	6.5	5.4	0	0	0	0.7	9		
10		0.3	1.6	0	0	0.1	4.6	3.1	3.2	0	4.0	1.6	0.1	10		
11		0.8	0.6	0	0	3.3	0	2.2	7.5	0	8.2	0	0.2	11		
12		0	0	0	0	1.7	10.5	0	0	4.6	0	6.9	0	12		
13		1.8	16.8 +	0	0	5.5	0	0.5	0.5	0.8	4.3	4.5	0	13		
14		8.0	0	0	0	16.0 +	0	5.3	0.1	0	0	0	0.1	14		
15		0	9.3	0	0	4.6	0	0	13.2	0	0.9	15.4	0.2	15		
16	mm	8.9	0.9	0	0	0	0	0	6.0	0	2.5	9.4	0.1	16		
17		2.0	0	0	0	0	0	0	0	0	0.6	3.5	14.1	17		
18		0	0	0	2.0	0	0.7	0	0	0.1	0	0.1	3.9	18		
19		0	0.2	0	0.3	0.2	0	0	0.6	0.5	0	0	2.1	19		
20		0.2	0.5	0	0	0	0	27.9	0.1	4.9	5.9	0	3.1	20		
21		0	4.2	0	0	0	0	30.2 +	0	11.4 +	11.8	0	0	21		
22		0	3.0	13.9 +	0.2	1.1	0	18.8	0	0	7.5	0	0	22		
23		1.6	0.3	11.4	1.6	10.2	4.2	0	0	0.6	0.6	0.1	0	23		
24	+ Maximum	3.6	0	0.3	0.3	0	14.5 +	0	4.1	4.6	0	0	0	24		
25		0	0	0	0.9	0	0	0	0	1.6	3.0	0	2.0	25		
26		3.4	3.1	0	17.3	0.4	0	1.5	12.5	0	0.1	0.1	1.9	26		
27		6.2	1.8	0	11.5	1.2	0.7	0.1	2.4	0	0	0	16.6 +	27		
28		0	0.8	0	22.5 +	0	6.0	8.7	0	0	0	0	4.7	28		
29		0	0	0	0.8	0.5	9.2	4.4	3.2	0	0	0	1.2	29		
30		0	0	0	21.2	3.8	0.9	3.0	0	0.4	0.2	0	1.2	30		
31		0	0	0	0	0	0	0.2	14.6	0	0	0	0.9	31		
Monatssumme		53.7	55.9	27.4 -	91.0	80.3	57.0	169.8 +	98.0	33.5	78.0	81.5	59.3	mm		
Niederschlagstage		12	12	2 -	8	14	7	16 +	13	6	11	8	13	Tage		
Niederschlagstage grösser oder gleich als [mm]		187 >= 0.1			56 >= 5			31 >= 10		6 >= 20		>= 50		>= 100		Tage
Jahreswerte		Gesamtniederschlag 885.3 mm					Niederschlagstage 122 Tage									

Ganglinie der täglichen Niederschlagshöhen		----- Dauerlinie der täglichen Niederschlagshöhen (erreicht oder überschritten)													
mm		1	31	59	90	120	151	181	212	243	273	304	334	365	Tage



Periode	2001 - 2014												(14 Jahre)
Mit Monatssumme	64.0	48.4 -	70.6	75.0	82.0	73.6	111.9 +	107.7	68.2	80.1	68.4	86.2	mm
Max Tagessumme	34.1	32.2 -	34.5	43.4	34.3	35.8	82.4 +	68.4	49.5	47.1	33.9	32.9	mm
Jahr	2004	2006	2006	2008	2013	2010	2013	2007	2008	2006	2014	2011	
Periode	Max Gesamtniederschlag 1248.7 (2001)						Min Gesamtniederschlag 725.5 (2003)						mm

Darstellung der letzten 12 Jahre



Jahressumme	725.5	897.7	761.9	1089.7	1028.8	942.1	839.3	854.4	823.2	1028.9	937.2	885.3	mm
-------------	-------	-------	-------	--------	--------	-------	-------	-------	-------	--------	-------	-------	----

Niederschlag

Spitzacker - Schönenwerd

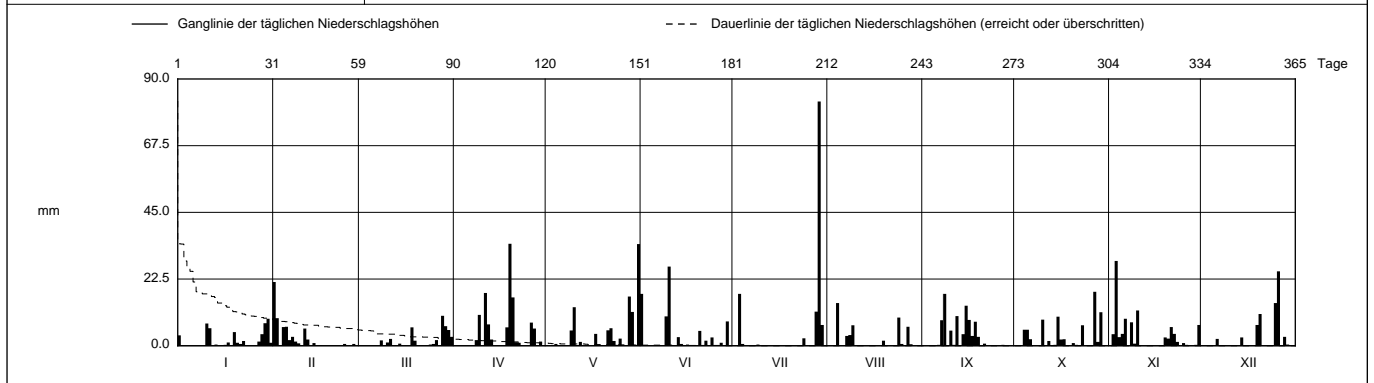
SO 642/246/027

Koordinaten 642 380 / 246 100

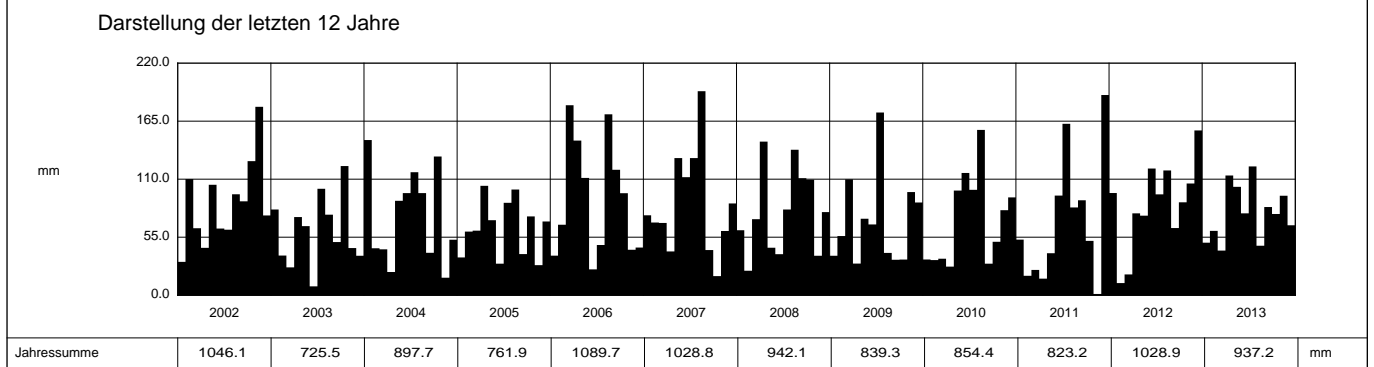
Stations Höhe 394.5 müM

Fläche - km2

2013		Jan	Feb	März	April	Mai	Juni	Juli	Aug	Sept	Okt	Nov	Dez		
1		3.5	21.5 +	0	0	0	17.5	0	0	0	0	0	0.2	1	
2		0.1	9.3	0	0	0	0	0	0	0	0	3.9	0.1	2	
3		0	0	0	0	0.2	0	17.5	0	0	0	28.6 +	0	3	
4		0	6.3	0	0	0.6	0	0.6	14.4 +	0	5.4	2.9	0	4	
5		0	6.4	0	0	0	0	0	0	0	5.4	4.0	0	5	
Tägliche Niederschlags-höhen															
6		0	1.9	0	0	0	0	0	0	0.3	2.2	9.1	2.3	6	
7		0	3.0	0	0	0	0	0.1	3.3	8.6	0	0	0	7	
8		0	1.4	1.8	1.9	0	0.1	0	3.6	17.5 +	0	7.9	0.1	8	
9		0	0.8	0	10.4	5.2	9.9	0.4	6.9	0	0	0.7	0.1	9	
10		7.5	0	1.1	0	13.0	26.7 +	0	0	5.1	8.8	11.9	0.1	10	
11		5.9	5.8	2.3	17.8	0.1	0.1	0	0	0.3	0	0	0	11	
12		0	2.1	0.1	7.2	1.3	0	0	0	10.0	1.6	0	0	12	
13		0.4	0	0	2.1	0	2.9	0	0	0	0.2	0	0	13	
14		0	0.9	0.7	0	0	0.6	0	0	3.9	0.3	0	2.8	14	
15		0.2	0.2	0	0	0	0.2	0	0	13.5	9.8	0	0	15	
mm															
16		0.3	0.2	0	0	0	0.4	0	0	8.7	2.1	0	0	16	
17		1.1	0	0	0	4.0	0	0	0	3.3	2.2	0	0	17	
18		0	0	6.2	6.2	0.2	0	0.1	0	8.1	0	0	0	18	
19		4.6	0	1.7	34.4 +	0.2	0	0	1.7	3.0	0	2.8	7.0	19	
20		1.0	0	0.2	16.3	0	5.0	0	0	0	0.9	2.4	10.7	20	
21		0.6	0	0.1	1.2	5.2	0.1	0	0	0.7	0.3	6.3	0	21	
22		1.6	0	0	1.0	5.9	1.7	0	0	0.2	0.1	4.0	0	22	
23		0	0	0.2	0	1.6	0.1	0	0	0	6.9	1.3	0	23	
+ Maximum															
24		0	0.6	0.4	0	0.3	2.8	2.5	9.5	0	0	0	0	24	
25		0	0	0.6	0	2.4	0	0	0.6	0	0	0.9	14.4	25	
26		0	0	1.9	7.8	0	0.1	0	0	0.1	0	0.3	25.1 +	26	
27		1.4	0.6	0	5.8	0	1.0	0	6.4	0.3	18.2 +	0	0	27	
28		3.9	0	10.1 +	0	16.6	0.2	11.5	0.5	0	1.3	0	3.0	28	
29		7.6	0	6.6	1.4	11.4	8.2	82.4 +	0	0	11.3	0.3	0.4	29	
30		9.1 +	0	5.3	0	0.3	0	7.0	0	0	0	7.0	0	30	
31		1.0	0	3.0	0	34.3 +	0	0	0	0	0	0	0	31	
Monatssumme		49.8	61.0	42.3 -	113.5	102.8	77.6	122.1 +	46.9	83.6	77.0	94.3	66.3	mm	
Niederschlagstage		12	9	10	13 +	11	9	5 -	7	10	12	13 +	7	Tage	
Niederschlagstage grösser oder gleich als [mm]		179 >= 0.1		65 >= 5			26 >= 10		7 >= 20		1 >= 50		>= 100		Tage
Jahreswerte		Gesamtniederschlag 937.2 mm					Niederschlagstage 118 Tage								



Periode	2001 - 2013 (13 Jahre)												
Mit Monatssumme	64.8	47.9 -	74.0	73.8	82.2	74.9	107.5	108.5 +	70.9	80.2	67.4	88.3	mm
Max Tagessumme	34.1	32.2	34.5	43.4	34.3	35.8	82.4 +	68.4	49.5	47.1	28.6 -	32.9	mm
Jahr	2004	2006	2006	2008	2013	2010	2013	2007	2008	2006	2013	2011	
Periode	Max Gesamtniederschlag 1248.7 (2001)						Min Gesamtniederschlag 725.5 (2003)						mm



Jahressumme	1046.1	725.5	897.7	761.9	1089.7	1028.8	942.1	839.3	854.4	823.2	1028.9	937.2	mm
--------------------	--------	-------	-------	-------	--------	--------	-------	-------	-------	-------	--------	-------	----

Niederschlag

Spitzacker - Schönenwerd

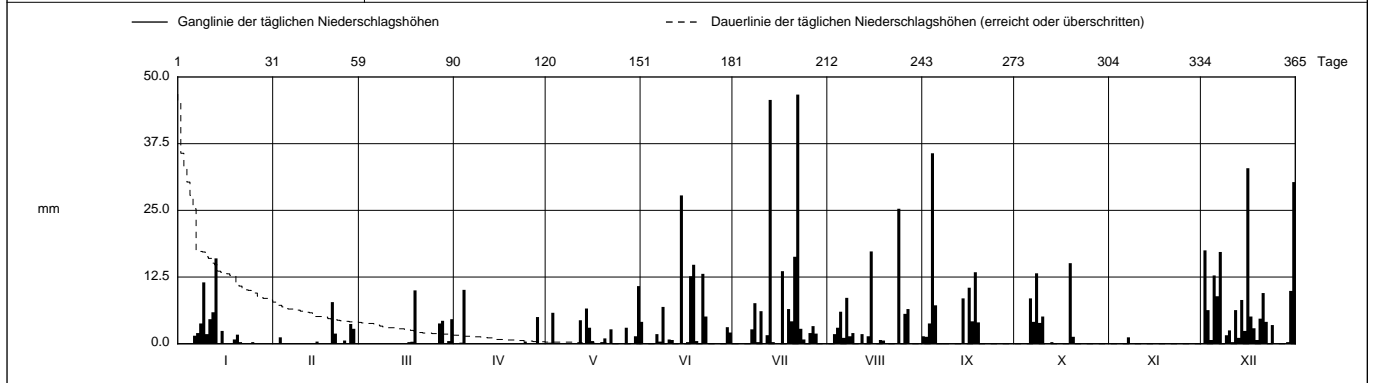
SO 642/246/027

Koordinaten 642 380 / 246 100

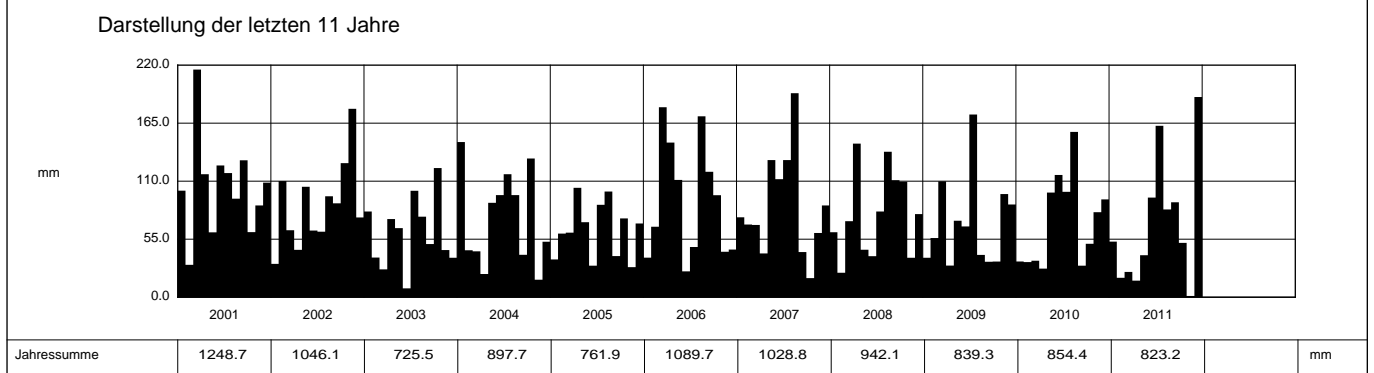
Stations Höhe 394.5 müM

Fläche - km2

2011	Jan	Feb	März	April	Mai	Juni	Juli	Aug	Sept	Okt	Nov	Dez		
1	0	0	0	0	0	4.1	0.1	0	1.4	0	0	0	1	
2	0	0	0	0	0.2	0	0	0	1.3	0	0	17.5	2	
3	0	1.2	0	0.2	5.8	0	0	1.8	3.8	0	0	6.3	3	
4	0.1	0	0	10.1 +	0	0	0	3.0	35.7 +	0	0	0.7	4	
5	0	0	0	0	0	0.1	0	6.0	7.2	0	0	12.8	5	
Tägliche Niederschlags-höhen														
6	1.5	0	0	0	0	1.8	0	1.1	0	8.5	0	8.9	6	
7	2.0	0	0	0	0	0.4	2.7	8.6	0	4.1	1.2 +	17.2	7	
8	3.8	0	0	0	0	6.9	7.6	1.4	0	13.2	0	0.1	8	
9	11.5	0	0	0	0	0.1	0.3	2.0	0	3.9	0	1.6	9	
10	1.8	0	0	0	0	0.8	6.1	0	0	5.1	0	2.5	10	
11	4.6	0	0	0	0	0.7	0	0	0	0	0	0.3	11	
12	5.9	0	0	0	4.4	0	1.6	1.8	0	0	0	6.3	12	
13	16.0 +	0	0	0	0	0	45.7	0.1	0	0.3	0	1.1	13	
14	0	0	0	0	6.6	27.8 +	0.3	1.4	8.5	0	0	8.2	14	
15	2.4	0.4	0	0	3.0	0	0	17.3	0	0	0	2.4	15	
mm														
16	0	0	0	0	0.5	0.3	0	0	10.5	0	0	32.9 +	16	
17	0	0	0.3	0	0.1	12.7	13.6	0	4.2	0	0	5.1	17	
18	0	0	0.4	0	0	14.8	0	0.7	13.4	0	0	2.9	18	
19	0.8	0	10.0 +	0	0.3	0.5	6.5	0.6	4.0	15.1 +	0	0.7	19	
20	1.7	7.8 +	0	0	1.0	0	4.2	0	0	1.3	0	4.7	20	
21	0.3	1.9	0	0	0	13.1	16.3	0	0	0	0	9.5	21	
22	0	0	0	0	2.7	5.1	46.7 +	0	0	0	0	4.1	22	
23	0	0	0	0	0	0.1	2.8	0	0	0	0	0	23	
+ Maximum														
24	0	0.6	0	0.4	0	0	0.8	25.3 +	0	0	0	3.5	24	
25	0.3	0	0	0	0	0	0	0	0	0	0	0	25	
26	0	3.7	0.1	0	0	0	2.0	5.6	0	0	0	0	26	
27	0	2.8	3.8	0	3.0	0	3.3	6.5	0	0	0	0	27	
28	0	0	4.3	5.0	0	0	1.9	0	0	0	0	0	28	
29	0	0	0	0	0	3.1	0	0	0	0	0	0.3	29	
30	0	0	0.5	0	1.4	2.1	0	0	0	0	0	9.9	30	
31	0	0	4.6	0	10.8 +	0	0	0	0	0	0	30.3	31	
Monatssumme	52.7	18.4	24.0	15.7	39.8	94.4	162.5	83.2	90.0	51.5	1.2 -	189.8 +	mm	
Niederschlagstage	10	5	4	2	9	10	14	13	10	7	1 -	20 +	Tage	
Niederschlagstage grösser oder gleich als [mm]	142 >= 0.1		50 >= 5			25 >= 10		7 >= 20		>= 50		>= 100		Tage
Jahreswerte	Gesamtniederschlag 823.2 mm					Niederschlagstage 105 Tage								



Periode	2001 - 2011											(11 Jahre)	
Mit Monatssumme	63.2	50.0 -	81.8	69.8	80.9	70.5	107.2	113.2 +	70.4	79.8	61.5	84.1	mm
Max Tagessumme	34.1	32.2	34.5	43.4	25.9	35.8	54.0	68.4 +	49.5	47.1	25.5 -	32.9	mm
Jahr	2004	2006	2006	2008	2007	2010	2009	2007	2008	2006	2002	2011	
Periode	Max Gesamtniederschlag 1248.7 (2001)					Min Gesamtniederschlag 725.5 (2003)							mm



Jahressumme	1248.7	1046.1	725.5	897.7	761.9	1089.7	1028.8	942.1	839.3	854.4	823.2	mm
--------------------	---------------	---------------	--------------	--------------	--------------	---------------	---------------	--------------	--------------	--------------	--------------	-----------